

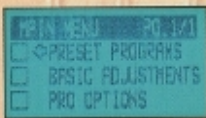
white's



CATALOG OF METAL DETECTORS

The detector that sets the standard for finding treasure ...

5 Turn-on-and-Go! Programs.
Plus 4 more you create, name,
and store to use over and over.



If you're one of those folks who never reads the instruction manual and you've never programmed your VCR, finding treasure is as easy as turning on the XLT and selecting a Preset program. With 5 to choose from, you've got virtually every kind of hunting covered.

If you decide to change any setting on a Preset program, or even start from scratch to build that "ultimate" custom program, it's easy to name and store. Keep up to 4 programs stored for future use. They'll be ready to go when you are.

With the touch of a pad, bring up the most-asked-for adjustments and enhance your performance for your particular hunting needs.



POWERFUL BLUE MAX 950
9 1/2" LOOP

Interchangeable with all Blue Max coils.

SLIDE-IN NICAD BATTERY SYSTEM INCLUDED

12 Volt Nicad pack and charger with proven, trouble-free "point & pad" connections. Provides 12-15 hours of hunting. Backup penlight holder included.

AUTOMATIC GROUND BALANCE WITH AUTOTRAC®

True balance that corrects for changing ground while you hunt.



"I've always enjoyed beach hunting and recently made a unique find. While hunting with my XLT, I had a reading in the ring range (21-25). Excitedly, I scooped up some sand and retrieved a ring. Being a careful hunter, I ran the coil across the area again. I got another ring sound. By this time my adrenaline was running wild. Before I was through, I had 4 rings from the same hole. The two bracelets were found on the same beach a few days later."

Jim Helton, California



ABOUT THIS CATALOG ...

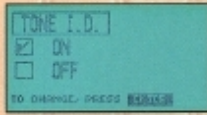
The cover photo and backgrounds for this catalog were photographed on the set of White's Treasure Shop in Sweet Home, Oregon. White's new film and video studio will be used to produce our 30 minute TV program, "White's Treasure Shop". Watch for it in your area.

SPECTRUM® XLT®

For a dealer near you
1-800-547-6911

29 Professional Options.

The ultimate in flexibility for optimizing your performance.
This is one detector you'll never outgrow!



PRO OPTIONS

Ratchet Pinpointing	Block Edit
S.A.T. Speed	Learn Accept
Tone I.D.	Learn Reject
V.C.O.	Recovery Speed
Absolute Value Modulation	Bottlecap Reject
AutoTrac	Visual Disc.
Trac View	Icons
AutoTrac Speed	V.D. I Sensitivity
AutoTrac Offset	Graph Averaging
Trac Inhibit	Graph Accumulation
Coarse G.E.B.	Fade Rate
Fine G.E.B	Transmit Boost
Disc. Edit	Transmit Frequency
	Preamp Gain

"Engineer" and save your own hunting programs to use again and again. A wide range of adjustments in 5 categories: Audio, G.E.B./Trac, Discrimination, Display, and Signal (transmit and receive).

UNEQUALLED DEPTH ON COINS, RELICS, AND JEWELRY

XLT finds the older, deeper, more valuable items other detectors can't detect.

"TRUE GRAPHICS" LUMINESCENT DISPLAY

No other detector gives you this much target information! Big, bold icons, VDI numbers, SignaGraph, and depth reading readout on the 8,192 pixel high resolution screen.

10 BASIC ADJUSTMENTS, 29 PRO OPTIONS

It's easy to change a Preset program. "Engineer" your XLT to your specific hunting requirements.

WATER-RESISTANT POD & WRAP-OVER CASE

Pod & display tenon-groove gasketed for all-weather hunting. High tensile strength aluminum case for rugged durability.

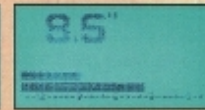
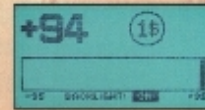
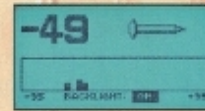
LIGHTWEIGHT, ERGONOMIC DESIGN

Weighs in at just 4 lbs. Center of gravity is now behind the electronics for comfortable all-day hunting.

TRIGGER PINPOINTING

Activates target depth screen, and the circuit that concentrates the signal for precise pinpointing.

Big, bold VDI numbers read-out alongside target icons, and White's exclusive SignaGraph®.



Sweep and watch the XLT display without missing a beat. The VDI numbers and icons are BIG!

SignaGraph's bar graph gives you a graphic look at what's in the ground. It's one more key piece of information about whether or not to dig your target.

Pinpointing is more precise and easier than ever. With a flip of the trigger, activate the depth screen and watch the bars to zero in on your target. You can even reverse the screen to read light on dark.

5 PRESET TURN-ON-AND-GO! PROGRAMS PLUS 4 CUSTOM PROGRAMS

Just push a pad and you're off and hunting with the expertise of a factory-engineered game plan - or customize your XLT with your own settings.

SIGNAGRAPH®

Only on XLT! Bar graph target signature unique for each target.

TARGET ICONS

Visual probable I.D. graphics for coins, jewelry, nails, and junk.

\$899.95
sugg. ret.



Mid-price digital simplicity & performance

Our two new Quantums offer terrific performance for every corner of the country, for every kind of hunting. Both detectors feature true automatic ground balance: you balance for your hunting conditions with just one step. Turn-on-and-Go detectors, the Quantums give you the versatility of Preset programs with the adjustments you need.

[3]Coins
[ENTER] to Load

The Coins program comes pre-loaded, but you can easily choose another Preset Program.

*Disc Edit
Zone:1 Reject

Use Disc. Edit to accept or reject one of the 8 target zones. It's simple and accurate!

[1]Low Iron

The Quantum wide-angle display shows the target zone, target label, and the new target intensity bar graph. Use the Preset programs to see and hear just the targets you're after, or customize by accepting or rejecting any of the target zones. We've grouped similar targets into zones and taken the work out of rejecting the items you don't want to see, hear, and dig. 8-Zone discrimination makes it easy!

[2]High Iron

[3]Foil/5m. Ring

[4]Nickel/Ring

[5]Tab/Lg. Ring

[6]Screwcap/Zn

[7]1# -- 50#/1#

Once you've located a target, the Intensity graph confirms your target info. The bar graph holds the target history and updates 12 times per second. One more key piece of information!

[8] (ground)

With a flip of the trigger, the Quantums switch to depth reading. Just pinpoint your target and you're ready to dig.



Q II FEATURES:

3 Preset Turn-on-and-Go! Programs

- Coins
- Coins & Jewelry
- Relic/Prospecting

8 User Adjustments

- Volume
- Threshold
- Sensitivity
- View Angle
- Transmit Frequency
- Discrimination On/Off
- Coin I.D. Tone
- Discrimination Edit

One-Step Ground Balance. Not a factory preset setting. Quantum 8" loop. Interchangeable with all Blue Max loops. **Slide-in 12-Volt Battery System.** Rechargeable system available.

Whether you're new to metal detecting, or a veteran hobbyist, the Quantum QXT and QII use the very latest metal detecting technology to make your hunting simpler than ever.

If you're looking for a detector that's sure to make treasure hunting *fun*, check out the Quantums. Light enough for all day hunting and packed to the brim with the features that help you find treasure.

POWERFUL BLUE MAX 950 9 1/2" LOOP

Interchangeable with all Blue Max coils.



QUANTUM XT FEATURES:

4 Preset Turn-on-and-Go! Programs

- Coins
- Jewelry/Beach
- Coin & Jewelry
- Relic/Prospecting

14 User Adjustments

- Volume
- Threshold
- Search Sensitivity
- Pinpoint Sensitivity
- Viewing Angle
- S.A.T. Speed
- Tracking Speed
- Transmit Frequency
- Discrimination
- VCO Audio
- Noise Reduction
- Mixed Mode Audio
- Disc. Edit/Zones 1-8
- Tone Alert

One-Step *Fast Track* Ground Balance. You balance for your area and the QXT tracks to changing ground automatically - while you hunt.

DeepScan 950 Loop. Interchangeable with all Blue Max loops.

Slide-in 12 Volt Battery System. Rechargeable Nicad Battery system available.

\$499.95
sugg. ret.

QUANTUM™ Series



During the Quantum field test, Ed and his partners recovered Spanish and British coins from the Colonial Period and buttons from the Revolutionary and French & Indians Wars.

I headed to a friend's home which had been built in the '40's. Desiring to keep the friendship, and knowing that the dry soil conditions might produce some damage to his lawn, I decided to detect in the Coins preset program and only dig enough Zone 7 signals to test the lawn for silver. After I found a couple of Wheat cents, the first silver dime came to light in the bottom of a plug.

Witnessing the recovery of silver from the ground, for some people, is the only incentive needed for grabbing onto a detector and attempting a similar recovery. A true novice, Brian was able to recover several coins from his lawn, including a pre-1964 silver quarter. To most detectorists, that feat sounds like "small potatoes" but for a guy who had never before held a detector in his hand, it was quite a big deal. The QXT made his first recoveries an easy task.

"Build it strong, allow for individual needs, give it exceptional battery life, and ensure that it will stay in their hands and not in the closet." I think someone along the line might have had that thought when the Quantum was being designed."

Ed Fedory

"Field Testing the White's Quantum XT"

Western & Eastern Treasures magazine, December '96

TONE ALERT

Program zones to sound with a high-pitched, attention grabbing tone.

TARGET LABEL

Nickel, ring, 50¢, \$1, zinc penny, screwcap, foil.

NEW WIDE-ANGLE DISPLAY

Reads out target label, target zone, target intensity, and depth with 2 lines of oversized type and graphics.

8-ZONE DISCRIMINATION

No complicated "notch" editing. QXT makes it easy to accept or reject target groups.

DEPTH READOUT

Once you've pinpointed a target, just pull the trigger to read depth.

TARGET INTENSITY GRAPH

Bar graph holds the target history and updates 12 times per second.

ONE-STEP FAST-TRACK GROUND BALANCE

Now easier than ever!

LIGHTWEIGHT, ERGONOMIC DESIGN

Weighs in at just 4 lbs. Center of gravity is now behind the electronics for comfortable all-day hunting.

SLIDE-IN 12-VOLT BATTERY SYSTEM

Delivers 25 hours of hunting time. Optional Nicad rechargeable system.

WATER-RESISTANT POD & WRAP-OVER CASE

Pod & display tenon-groove gasketed for all-weather hunting. High tensile strength aluminum case for rugged durability

4 PRESET TURN-ON-AND-GO! PROGRAMS

Coins, Coin & Jewelry, Jewelry/Beach, and Relic/Prospecting.

\$649.95
sugg. ret.



Traditional favorites that find it all



LARGE METER

I.D.'s target and reads depth when you flip the trigger.

TRIGGER SWITCH

Alternates between hunting modes, reads depth, and retunes.

4 HUNTING MODES FOR ALL TYPES OF DETECTING

GEB/DISC, GEB/NORM, TR/DISC, GEB/S.A.T

\$599.95
Sugg. Ret.

The 5900/Di PRO has the power, sensitivity and the features relic hunters demand.

Double stacked 10-turn G.E.B. control provides precision tuning. Great for prospecting and relic hunting.

Large Meter I.D.'s target, reads depth when you flip the trigger.

4 Hunting Modes: GEB/DISC, GEB/NORM, TR/DISC, GEB/S.A.T.

Discriminate control adjusts the level of trash you reject.

PRESET control settings.

Self-Adjusting Threshold (S.A.T.) keeps the detector stable even when the ground minerals aren't.

Trigger alternates between hunting modes, reads depth, retunes.

On-the-box instructions.

9 1/2" Blue Max search coil standard. (Accepts all Blue Max loops.)

Power Supply: Drop-in C-cell pack. Opt. rechargeable system.



The 6000/Di PRO is our top-of-the-line analog detector. Powerful and versatile for all kinds of hunting.

AutoTrac® samples the ground and electronically resets for maximum depth and sensitivity.

PRESET control settings.

Discriminate control adjusts the level of trash you reject.

Tuner control selects the optimum threshold.

Signal Balance control adjusts for improved performance and cleaner target signals in all types of grounds.

9 1/2" Blue Max loop. (Accepts all Blue Max loops.)

On-the-box instructions.

Power Supply: Drop-in C-cell pack. Optional rechargeable system.



HOT ROCK ACCEPT/REJECT

Allows you to choose whether you hear troublesome mineralization or ignore it.

SIGNAL BALANCE CONTROL

Adjusts for improved performance and cleaner target signals in all types of grounds.

\$499.95
Sugg. Ret.



DOUBLE STACKED 10-TURN G.E.B. CONTROL

Precision tuning for prospecting and relic hunting.

ON-THE-BOX-INSTRUCTIONS

SELF ADJUSTING THRESHOLD (S.A.T.)

Keeps the detector stable even when the ground minerals aren't.

\$399.95
Sugg. Ret.



The 4900/DL Max is fully adjustable for extreme ground. A favorite of relic hunters and prospectors.

4 Hunting Modes: GEB/DISC, GEB/NORM, TR/DISC, GEB./S.A.T.

Discriminate control adjusts the level of trash you reject.

Signal Balance control for improved performance and cleaner target signals.

PRESET control settings.

Hot Rock Accept/Reject allows you to choose whether you hear troublesome mineralization or reject it.

8" Blue Max loop. (Accepts all Blue Max loops.)

Power Supply: Drop-in C-cell pack. Opt. rechargeable system.

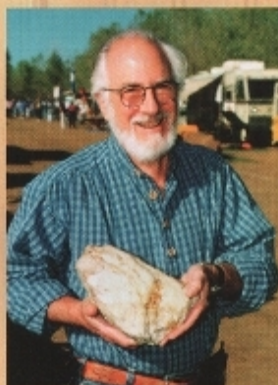
PRO Series

For a dealer near you
1-800-547-6911

All new for '97! New features that help you find more gold

The GM 3 expands on the proven platform of the Goldmaster, with improvements that enhance your ability to find gold - in virtually every kind of ground.

If you're after gold nuggets, big and small, the Goldmaster 3 is your new prospecting partner. The GM 3's performance is second to none in the extreme mineralization typical of gold-bearing areas. We've improved your control on every feature on the GM 3 so you hear nuggets that were previously undetectable. Stacked up against any other gold detector on the market, the GM 3 will yield a measurable increase in depth and sensitivity - even in the worst ground conditions.



Jimmy "Sierra" Normandi displays a quartz rock found with his Goldmaster. This "boulder" contains over 19 oz. of gold.

"From the introduction of the original Goldmaster II, White's objective has been to design and build the best gold detector possible. The Goldmaster V/sat evolved in response to the many suggestions and requests coming from the fields, and the V/sat has become a legend among electronic prospectors. When White's asked me how I would improve on the V/sat, I was at a loss. It was a tough act to follow, but I believe we have done it. Each and every feature of the Goldmaster 3 has been enhanced or improved. We've even added a few new ones. Every control has been evaluated and its performance optimized. There are no frills on the GM 3. This detector is all muscle, and it is the best of Goldmaster technology."

Jimmy Sierra

ELLIPTICAL SEARCH COIL

The elliptical design of the GM 3 loop allows you to cover more ground with each sweep and presents an elongated window in the sensitive center of the loop for detecting the tiniest nuggets.

3-PIECE ROD SET AT NO EXTRA COST!

Breaks down into a compact package for easy transport. Locks together with rattle-free camlocks when assembled and ready to use.

NEW! SELECTABLE SIGNAL BOOST

The flip of a toggle increases the audio gain or "sensitivity" by 3X or 5X when desired to enhance the detection of deeper or tinier nuggets. Great for hunting bedrock!

NEW! VARIABLE OPERATING FREQUENCY

Now Goldmasters can work side by side without audio interference by simply adjusting the frequency. A GM 3 exclusive!

NEW! PHASE COMPENSATED GAIN

Allows you to adjust Gain or "sensitivity" without re-ground balancing.

IRON I.D. METER & AUDIO

Needle "jumps" and the audio signal "crackles" on probable iron trash without any loss in detection depth when using the Iron I.D. feature. Another GM 3 exclusive!

IMPROVED THRESHOLD STABILITY

Now picks up even tinier nuggets.

8-CELL 12 VOLT BATTERY PACK

40:1 GROUND EXCLUSION BALANCE

The 40:1 ratio gives you a more precise ability to cancel ground, detecting smaller and deeper nuggets. All this with just 2 knobs.

\$649.95
sugg. ret.

GOLDMASTER® GM 3

New SL design for all-day hunting

The Classic SL III is loaded with performance and features at a terrific price.

NEW! Optional adjustable ground balance. The ground balance is still preset for good performance in most areas of the country, but adjusts for specific conditions if you choose.

2 hunting modes; Discriminate and All-Metal. Flip the trigger to switch from Discriminate to All-metal. Defines the target for easy pinpointing and digging. Black Sand switch for detecting in highly mineralized ground.

Frequency Adjust control eliminates interference from other detectors. Great for competition hunts.

Blue Max 950 search coil. Interchangeable with all Blue Max coils.

Sensitivity and Disc. controls with Ring and Coin Ranges.

Silent Search.

New! Slide-in "AA" battery system delivers 80 hours of battery life.

POWERFUL BLUE MAX 950 LOOP

Engineered for maximum depth. Accepts all Blue Max coils.

\$349.95
sugg. ret.

The Classic SL II is easy to use, reliable, and it ignores junk!

VERY SLOW SWEEP AND QUICK RECOVERY

Picks up coins mixed in with junk.

\$229.95
sugg. ret.

Optional adjustable ground balance. Preset by the factory to handle most grounds, but now adjusts, too.

Discriminate and Sensitivity controls with Preset settings for ring and coin ranges. Ring range detects all jewelry. Coin Range discriminates out most junk when hunting in trashy areas.

2 hunting modes; Discriminate and All-Metal. Flip the trigger to switch from Discriminate to All-metal. Defines the target for easy pinpointing and digging.

Silent Search.

New slide-in "AA" battery system delivers 80 hours of battery life.

Interchangeable Loop.

The Classic SL I features turn-on-and-go ease, built-in performance, and real discrimination.

Optional adjustable ground balance. Preset by the factory to handle most grounds, but now adjusts, too.

One control does it all. Discriminate control with preset settings for coin range and ring range. Ring range detects all jewelry. Coin Range discriminates out most junk when hunting in trashy areas.

New slide-in "AA" battery system .

80 HOURS OF BATTERY LIFE

New slide-in "AA" system for nonstop hunting.

\$179.95
sugg. ret.

White's metal detectors are protected under one or more of the following patents or trademarks:

U.S. 4024468	U.S. 4283816	U.S. 5523690	AUSTRAL 531967	GOLDMASTER	AUTOTRAC
U.S. 4030026	U.S. 4783630	CDN 1038036	U.K. 1548239	SURFMASTER	BLUE MAX
U.S. 4110679	U.S. 4862316	CDN 1118867	MEX 147016	EAGLE	SIGNAGRAPH
U.S. 4128803	U.S. 4868910	CDN 1165817	Other patents pending	SPECTRUM	AUTOSCAN
U.S. 4249128	U.S. 4906973	CDN 1266107	COINMASTER	WHITE'S	QUANTUM

CLASSIC SL Series

For a dealer near you
1-800-547-6911

Everything you need for beach and water hunting!



WORKS EQUALLY WELL ON LAND OR IN THE WATER

VLF circuitry (like White's land machines) makes it a great choice for lakes, streams, and swimming areas.

The Surfmaster II is your choice for freshwater beach and water hunting.

Discriminate control with 3 Preset settings; All-Metal, Low Disc. (detects small gold rings with some discrimination), and High Disc. (detects most coins and ignores most junk).

Sensitivity control maximizes depth.

Quick target-to-trash recovery picks out treasure mixed in with junk.

Low Battery Alert light glows when batteries are low.

On-the-box instructions. Start hunting right away!

Completely waterproof to 100 feet.

Power Supply: Three 9-Volt transistor batteries.

\$499.95
sugg. ret.

The Surfmaster PI detects with unbelievable depth and sensitivity on the hardest-to-hunt black sand beaches, and in wet salt.

Pulse Induction detection for exceptional depth on coins and jewelry in saltwater and mineralized ground.

Enhanced sensitivity to gold - the most sought-after beach targets (gold jewelry) respond at maximum depths.

Pulse Delay control selects the level of rejection on nonferrous trash.

Quick Target Recovery so you hear good targets even mixed in with junk.

Tuner Control adjusts the threshold tone and checks battery strength.

Variable sweep speed - sweep from slow to very fast with no loss of depth.

Automatic Ground Rejection.

Completely waterproof to 100 feet.

Power Supply: 8 "AA" penlight batteries.

3 WAYS TO HUNT

Surf PI with beach loop

\$599.95

Surf PI with weighted Pulse Diver 950 loop

\$629.95

Surf PI Deep diver (shown above) with diver rod and Pulse Diver 950 weighted loop

\$629.95

sugg. ret.

A NEW LAYER OF HUNTING!

The PI "sees through" black sand and wet salt to reach targets other detectors can't reach.



SURFMASTER® Series

Finds large treasures up to 20 ft. deep

The TM 808 rejects ground minerals to detect deep- even through mineralized soil.

The 808 can be used almost anywhere, regardless of interference or ground minerals. It's easier than ever to tune, plus it features a great combination of factory settings with operator adjustments for complete flexibility. There are preset settings on each control for hassle-free setup.

The TM is ideal for locating coin caches, treasure chests, and hordes of gold or silver in either coin or bullion form. Use the Cave mode to locate caves, wells, or tunnels - all popular hiding places for buried treasures. The TM 808 is also perfect for finding septic tanks, tools, equipment, metal pipes, and relics.

Instruction Manual available in both English and Spanish.

ADJUSTABLE GROUND BALANCE

Gives you the ability to reject ground minerals for deep detection even through mineralized soil.

TWO MODES OF OPERATION

Use the Cave or Metal Mode.



NEW! SIGNAL BALANCE CONTROL

Adjusts the receive signals to allow use almost anywhere regardless of mineralization, or outside interference.

PUSH-BUTTON RETUNING

\$649.95
sugg. ret.

ONLY 2 KNOBS AND 2 TOGGLE CONTROLS

Threshold
Automatic Ground Balance
ON/OFF & Battery Check
Pinpoint
Sensitivity Level (low or high)



\$699.95

sugg. retail with Blue Max
15" loop and PRO headphones

The Sierra Madre detects all metals at great depths.

The Sierra Madre was designed to be used by the serious treasure hunter who is especially hunting for large and deep treasures. The Sierra Madre is packaged with 2 loops; the large, 15" loop is used for general searching and gets the greatest depth - from 3 to 5 feet on large treasures. Once the treasure location is found, the smaller loop is used to pinpoint the exact spot where the treasure is located. The 9 1/2" loop can also be used to search areas such as walls of buildings and will detect to a depth of 3 feet or more. An extra large 25" loop is also available for the Sierra Madre which is capable of detecting to depths of 6 to 9 feet, or about 3 meters.

Packed with both English and Spanish instruction manuals.

FOR A FREE CATALOG ON WHITE'S COMPLETE LINE OF INDUSTRIAL DETECTORS

1-800-547-6911

White's AutoScan is built to handle today's toughest security requirements.

Only AutoScan offers you an increase in volume and pitch depending on a metal's size. Large metallic objects respond with a strong, high-pitched sound. Smaller metals respond with a clear, lower frequency tone.

A pulsed alarm alerts when the battery reaches a 10% charge level. Because of a very low draw, you can count on at least 50 hours of use from a single 9 Volt battery.

White's AutoScan Personal Search Detector. Light enough for extended use. Durable and reliable. Totally automatic. With the unequalled sensitivity and reliability security professionals demand.

AUTOSCAN - L

Recommended for high-volume searching for larger targets. **\$229.95** sugg. ret.

AUTOSCAN - S

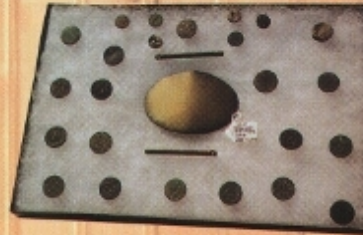
Very sensitive for high security applications. Detects tiny targets as well as large. **\$229.95** sugg. ret.



SPECIALTY Detectors

Spectrum Produces!

In Sept. '94 I started up metal detecting again after 10 years. My first new detector was a competitors model that I used only a few months and found very little to talk about. I then sold the detector and purchased an Eagle Spectrum. What a difference - like night and day. I had previously hunted a well worked-over military encampment and found only value. That with my second time U.S. military belt plate of excellent depth of shocked find of my



The second time out with his Spectrum, Mike uncovered a U.S. beltplate.

iron relics of no all changed Spectrum. My out I found a 1814 shoulder solid brass in condition. At a over 8", I was with the great life.

Over the past year I have found over 18 different U.S. military uniform buttons, 2 artillery cannon primer fuses, 2 buckles, and 11 musketballs along with many other nice relics. The Spectrum was the only metal detector that kept on producing. What a great investment.

Mike Spiller, Missouri



Spring Hunt Yields Rare English Sixpence

The winter of '96 was one for the record books in the New York area, and on Long Island the ground was constantly covered with snow. Mother Nature had battered us with storm after storm, forcing me to keep my 6000/Di Pro in the trunk of my car. As the middle of March approached, the temperatures climbed to the '40's and 50's. I found myself yearning to grab my tool belt and spade and head out to a local field to do some "prospecting".

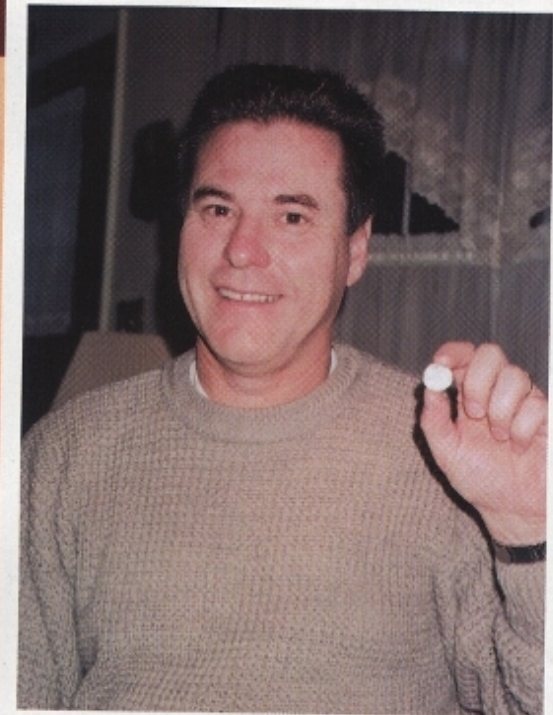
I decided to detect an area that had always turned up various treasures, from recently lost coins to pocket knives. I wasn't there one minute when I had my first coin, a recently minted dime. I continued to work field, including an out" according to watching a deer another hit.

As I pulled it from light caught my eye loam sticking on to be another pop color, and slightly bent. As the object revealed itself, I saw that it was in fact, not a pop top, but possibly some sort of medal. One side was smooth, save for what looked like some obscure lettering. The other side had writing on it, but was difficult to read. I was able to make out the letters spelling "ENG" and "16" and then a "2". Beneath them were the letters "VI".

Ray's once-in-a-lifetime find, a 1652 Oak Tree Sixpence.



Since I am by no means an expert on coins, I headed to my local coin shop. He thumbed through a few pages of the United States Coin guidebook, slapped the book down in front of me, and pointed to a coin on the top of page 18. It was an Oak Tree Sixpence, dated 1652.



It turns out my coin was a silver sixpence, produced some time between 1660 and 1667. I had found a true piece of our "pre-American history". The coin was worn and could be considered in "almost good" shape. To me, it was a once-in-a-lifetime find. The history of this 3 century-old coin, I will always wonder about.

Ray Kopeck, New York

SUCCESS STORIES

Going Abroad? Take a Detector!

My good friend Richard recently returned from Spain. He had gone to work some of our old sights with his new Spectrum XLT. With only a few trips out to detect, he found 114 coins, one of which was a medieval coin of Alfonso VII, uncataloged and worth over \$1,000, a bronze coin of emperor Tiberius, coins of Fernando & Isabella, a handful of copper cobs with dates in the 1600's, and a huge silver dollar-sized coin of Alfonso XII recovered at over 18". Also found were 22 musketballs, 5 lead seals, an ornate medieval belt buckle along with 3 common buckles, 4 medieval ornaments, 7 religious medals, 32 buttons, and 40 assorted relics ranging from pre-Roman through medieval times.

Richard is quite impressed with his new machine and is looking forward to returning next year for another chance to hunt the "hunted-out" areas. He says he uses the Relic program with the AC Sensitivity as high as it will go and remain stable. More than once he was told that the sight he was working would not produce because it had already been looked over too many times. Thanks for a great machine and helping my friend have the best vacation ever.

Karl Backus, Florida



Richard displays the bounty of coins and ancient relics he recovered with his XLT while vacationing in Spain.



Who says kids can't be great treasure hunters?

Shawn & Scott Graham have found some fantastic treasures near their home in Iowa. They've been featured in Western & Eastern Treasures magazines 10 Best Finds, and make a family sport of metal detecting with their parents, Bert and Jean.

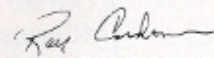
Whites Advertising Dept.
1011 Pleasant Valley Road
Sweet Home OR. 97386

24 Sept. 1996

Dear Sir/Ms.

Arizona has long been known for the majestic beauty of it's desert. It's history is based primarily on mining and agriculture and as a result, there are many interesting Ghost towns and mining camps scattered throughout the State. Unfortunately, we also have some of the highest mineralized soil in the world. I believe "hot rocks" actually breed here! After receiving my XLT, I "tweaked" it up using the basic adjustments and pro options to meet the harsh conditions that have plagued me in the past. I selected a heavily trash laden vacant lot in downtown Phoenix to try out my settings. A few minor adjustments later enabled me to get a distinctive chatter over the junk, and a smooth clear "whump" sound over the keepers. I stored these setting in a custom program, and began to hunt. The results were excellent. I worked this lot for two days and found the following: 1875-CC Seated Liberty dime, 1910 "V" nickel, 1912-S "V" nickel (key coin in the series), 1936 five centavo piece, 1942-D Mercury dime, 1963-D Rosey dime, 1963-D Franklin half, 20 wheat cents, 1 silver ring, 8 Arizona tax tokens, and 25 assorted clad coins.

Over the years I've owned five "top of the line" White's detectors, each one better than the last. The XLT is light years ahead of the others. Congratulations to all of you at White's for producing such an outstanding product.


Ray Cordova

Do you have a story you'd like to share?

We'd like to hear from you! Send your story (color photos are a big plus) to: White's Stories, 1011 Pleasant Valley Road, Sweet Home, OR 97386

SUCCESS STORIES

CARRYING CASES

Lite Carryall Bag

Gun-style case in lightweight nylon. Fits all Classic and SL-style detectors. No disassembly required. \$39.95

Hard Cases

Hard-side, shockproof cases for maximum protection. Padded, cutout insert. Lockable. Requires disassembly.

Spectrum XLT case \$99.95
 Slimline case \$99.95
 SL case \$99.95

MISCELLANEOUS

15" Gold Pan

Easy view of black sand and gold. Reduces cold dissipation. Ripples on 1/3 of pan. \$5.95

Sand Scoop

Powder coated finish over galvanized steel. \$19.95

Target Stick

Easy bench testing with common coins, trash targets, and a mineral sample. \$24.95

SL Tall Man Rod

For use with any SL model. Recommended for individuals over 6' tall. Lengthens rod by one foot. \$9.95

Digging Trowel

Rubber handle and 6 1/2" steel blade with inches labeled. \$7.95

Standard Headphone

Separate volume controls. Mono and stereo capability. 1/4" jack. Coiled cable. \$29.95

K/W Pro Headphone

Mfd. for White's by Koss. Separate volume controls. Gold-plated plug works with stereo and mono jacks. Coiled cord. Large, padded earcups. Titanium-coated Mylar speakers. 1/4" jack \$99.95

Gold Panning Kit

Black 10" gold pan with accessories. \$19.95

ACCESSORIES

BOOKS & VIDEOS



- Metal Detecting the Hobby by Dick Stout \$6.95
- Relic Hunter the book by Ed Fedory \$9.95
- World of the Relic Hunter by Ed Fedory \$14.95
- Spectrum Better Depth by Darryl Townley \$6.95
- Finding Gold Nuggets II by Jimmy Sierra \$9.95
- Dust in the Wind by Gary Speck \$19.95
- Researching & Detecting Ghost Towns by Darryl Townley ... \$5.95
- H2Oh! A Field Guide to Water Hunting by Mike Brighty \$5.95
- The Urban Treasure Hunter by Michael Chaplan \$9.95
- Spectrum XLT by Darryl Townley \$9.95
- Coin Hunting In Depth by Dick Stout \$12.95
- Metal Detector Discrimination by Bob Brockett \$8.95
- XLT Ring Enhancement Programs by Clive Clynick \$6.95
- Spectrum XLT Video \$24.95
- Spectrum Shortcourse Video \$5.00
- Goldmaster V/Sat Video \$24.95

CLOTHES

- Spectrum XLT Sweatshirt**
Hvywt. cotton/acrylic. In cream and black. S - XXL. \$24.95
- Treasure Hunter T-Shirt**
99% Cotton. Assorted Colors. S - XXL. \$8.95
- Baseball Jacket**
Nylon outer with cotton flannel lining and ribbed trim. Black. S - XXL \$34.95
- Nylon Baseball Cap**
Summer mesh rear panel. \$5.95
- Corduroy Baseball Cap**
Black with embroidered logo .. \$7.95



LOOPS

- Sierra Gold Max**
Fits GM II, GM V/Sat, and GM 3. At least 20% increase in depth on medium to large targets. \$129.95
- Blue Max 600 6" Loop**
Provides better separation between targets in high trash areas. Increases sensitivity to small targets. \$99.95
- Blue Max 800 8" Loop**
A mid-size loop with better separation in high trash areas than the BM 950 and deeper detection than the BM 600. \$119.95
- Blue Max 350 4" Loop**
Maximum separation in high trash area and ability to work close to metal obstacles. \$119.95
- Blue Max 1500 15" Loop**
Designed to detect larger metal items; relics, groups of coins, etc. \$149.95
- Blue Max 256**
Designed to detect larger items. Fits the Classic SL II, and some older models. \$99.95



For these and many more great White's accessories, call us for a FREE accessory catalog.

"Every White's metal detector is hand-built right here in Sweet Home, Oregon".



It is with pride that we put our American Made label on every metal detector we build. At our facility here in Sweet Home, Oregon, we've been proudly building the world's finest metal detectors for almost fifty years now.

It starts in Marketing and Engineering with a plan using the very latest technology to design detectors better than the ones before. Once we've thoroughly tested and refined a new design in the field, it's ready for production. We take raw metal, bend, paint, bake and silkscreen to form a housing. Wire is wound, plastic is formed, and foam is inserted to construct a loop. Rods are bent and punched. Boards are stuffed and soldered. Knobs and displays are added. Manuals are printed in our print shop, and catalogs are designed and written right here.

At every step of the way, quality is foremost. Each detector is quality checked after each process, and bench-tested one more time before it goes out the door. And if you need service, our Customer Service Department does their best to repair your detector quickly so you can get back out in the field.

Finally, finished detectors are shipped out the door here in Sweet Home to virtually every corner of the world.

It has always been my philosophy to keep our people working by keeping our customers happy. I'm proud of our metal detectors, and of the people here at White's who build them for you.



Roger Consorti wipes off an SL rod punched for spring clips. (With White's 18 years.)



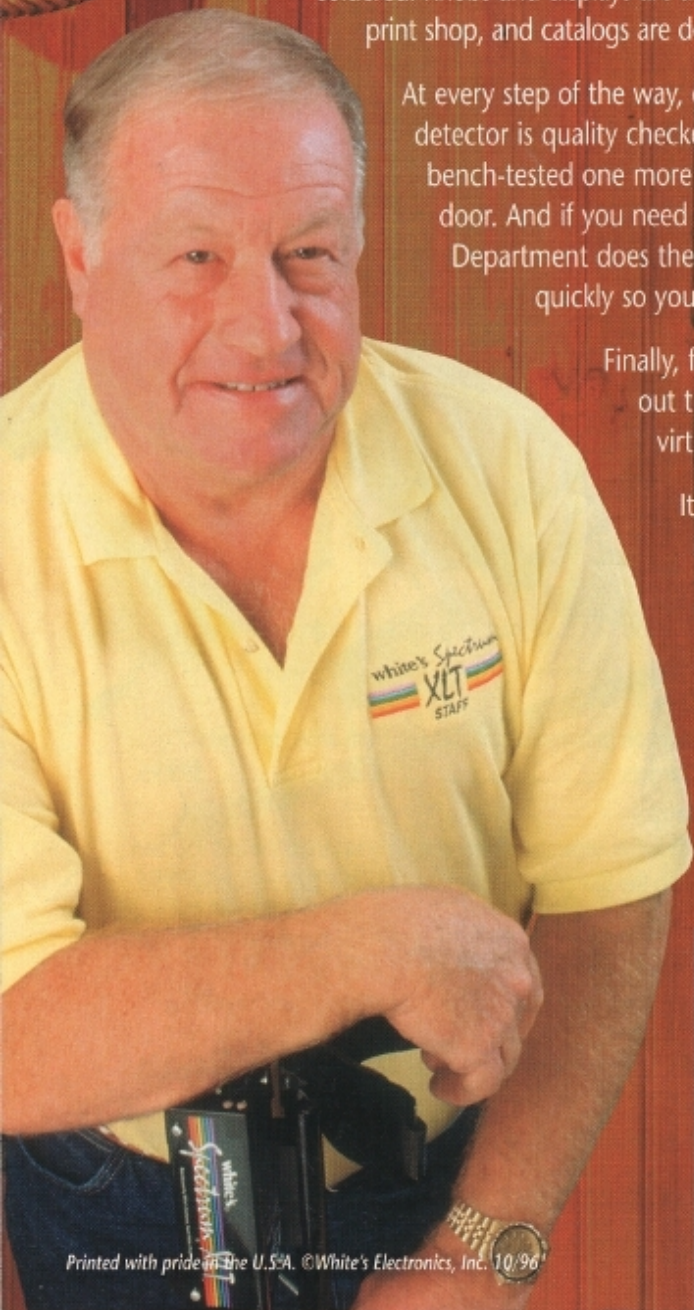
Connie Coulter assembles PC boards. (With White's 2 years.)



James Williams repairs a circuit board for the Service Dept. (With White's 1 1/2 years.)



Sherrie Pedden inspects PC boards. (With White's 17 years.)



White's Electronics, Inc.
1011 Pleasant Valley Road
Sweet Home, OR 97386