

white's Guide to Electronic Treasure Hunting





white's electronics, inc.

1011 Pleasant Valley Road Sweet Home, Oregon 97386 TWX 510-590-0890

Phone (503) 367-2138 / 367-6121

Fellow Treasure Hunters:

It is a pleasure to present you with the White's Guide to Electronic Treasure Hunting. This year we are especially proud of our product line. Over the past 35 years, our instruments have met the challenge of the increasing skill and sophistication of our customers. These detectors are the finest we've ever built — for every kind of treasure hunting. Whether it's coin hunting, prospecting, relic hunting, or beachcombing.

As pioneers in the industry, White's developed and patented Ground Exclusion Balance (G.E.B.), revolutionizing treasure hunting. Many more advancements followed: Depth Reading, Visual Discrimination Indication (VDI), and PRESET ∇_{m} . Now White's brings you Automatic Ground Balance.

This year we offer 2 complete lines of detectors — both providing the ultimate in high-tech treasure hunting.

The Professional Series. Built on the features that made White's number one, these Pro detectors offer you the proven White's combination of performance and flexibility.

The Liberty Series. A bold, new design for hours of hunting comfort and the simplest operation. Plus, terrific performance.

Whether you're a curious beginner or a seasoned professional, there's a White's detector for you. White's detectors have helped people find more treasure than any other brand. After all, we built them for some of the most interesting and exciting people in the world. . .Rainbow Chasers. Arm yourself with a White's detector and go out and fulfill your dreams. Your only limitation is your imagination!

Kenneth G. White
President

Kenneth R. White
Vice President

white's Commitment to Excellence



The White's commitment to excellence begins at the factory in Sweet Home, Oregon. Aware of the needs of our customers, we are tuned in to building instruments that satisfy those needs. This means being the industry leader in developing the latest technology to enhance metal detection. Research and development are ongoing through the White's engineering department. Each new instrument is tested thoroughly in the field, as well as in the lab. Actual treasure hunters test each new detector under the toughest field conditions. Every instrument that leave the factory must pass rigorous quality control standards. White's detectors proudly bear the American Made labeling.

A second White's factory is located in Iverness, Scotland. The Scotland and Oregon facilities share the same high standards for quality and performance. Together, these two facilities provide the finest detectors to the entire free world.



The White's commitment continues from the factory through a network of regional distributors who serve over 2,000 Authorized White's Dealers nationwide. These distributors link together the factory and the dealer. Authorized White's Dealers are trained to provide in-store demonstrations and help you select the best White's detector for your particular treasure hunting needs and budget. This service continues after the sale. If you have any problems or questions, simply return to your dealer. If your detector needs servicing, the dealer will send it to the regional Authorized White's Service Center for repair. An efficient and complete service system designed to keep your White's detector operating at peak performance.

Authorized White's Dealers are ready to help you with all your treasure hunting needs. For sales, service, and treasure hunting advice, see your Authorized White's Dealer first.

**FOR THE NAME OF THE AUTHORIZED WHITE'S
DEALER NEAREST YOU CALL
TOLL-FREE: 1-800-547-6911**

**OR FIND US FAST IN THE
YELLOW PAGES**



white's Professional Series



Dear White's:

There's an old field here in town that was used for baseball from about 1920 to 1950. Until about 1960, it was used for football. It was abandoned after that, and everyone that has a metal detector has searched it continuously. I think I know every blade of grass.

I started in about 1976 with a White's Goldmaster and found a few pennies, but no silver. (The soil is super soft and along the river's edge.) I graduated to a White's Series 2 and tested this field again. Quite a few Wheaties and some silver in the firmer soil. I searched again using a White's Di Series 3 and found lots of Wheaties in the soft area, and a few pieces of silver.

Today I spent 3 hours in the soft area with the Di Pro. I found 12 Mercury Dimes, 2 Roosevelt Dimes, 2 Washington Quarters, 2 War Nickels, 5 Jefferson Nickels, 1 Buffalo and 24 Wheat Pennies. Since Wheaties are easier to detect, all the years of searching has thinned out the Wheaties and left the silver. I realize I'm not a professional treasure hunter but somehow today I feel like a Pro. My biggest problem now is trying to remember all the places I found Wheaties and no silver.

Guess I had better go search that ole field one more time before dark!

Jim Wagner
Glasgow, Virginia

**Automatic GEB
with AutoTrac.™
Available only**

from  **white's**



6000/Di™ Pro

The best-selling detector on the market today. A proven performer with a lineup of outstanding features including Automatic GEB with AutoTrac™, Visual Discrimination Indication, Depth Reading, and PRESET ∇ ™. More depth. More sensitivity. The ultimate combination of sophistication and simplicity. The name says it all. The 6000/Di Professional. Treasure hunting at its finest!

■ Automatic GEB with AutoTrac™

Manual ground balancing is a thing of the past with the Di Pro! With just the flip of a switch, the Di Pro adjusts automatically to ground conditions to maintain maximum depth. As you sweep the loop, AutoTrac™ monitors even slight changes in ground mineralization and electronically resets the detector. Or you can lock in for a specific condition. Get the best detector performance, no matter what the conditions. No other detector gives you this much simplicity yet flexibility.

■ Sensitivity Control for Maximum Depth.

Increase the sensitivity control beyond the PRESET ∇ ™ mark where soil conditions permit for more usable depth. Use the Di Pro to search areas "worked out" by other, less sensitive detectors. You'll be amazed at the results.

■ Visual Discrimination Indicator.

Know what you've detected before you dig! VDI indicates the probable identity of targets: Coins, Iron, Pulltabs, Foil, Gold or Silver. After you've detected a target, pull the Trigger Switch and the Di's meter indicates depth. Safely recover what may be a valuable treasure!

■ PRESET ∇ ™ for Simplicity plus Flexibility.

Operate your Pro right out of the box! Just set the controls to ∇ ™ and go! PRESET sets the detector for optimum use under normal conditions. But White's left the controls on, so you have the flexibility to adjust to maximize your performance.


(For more on the 6000/Di Pro, turn to page 6.)

white's Professional Series

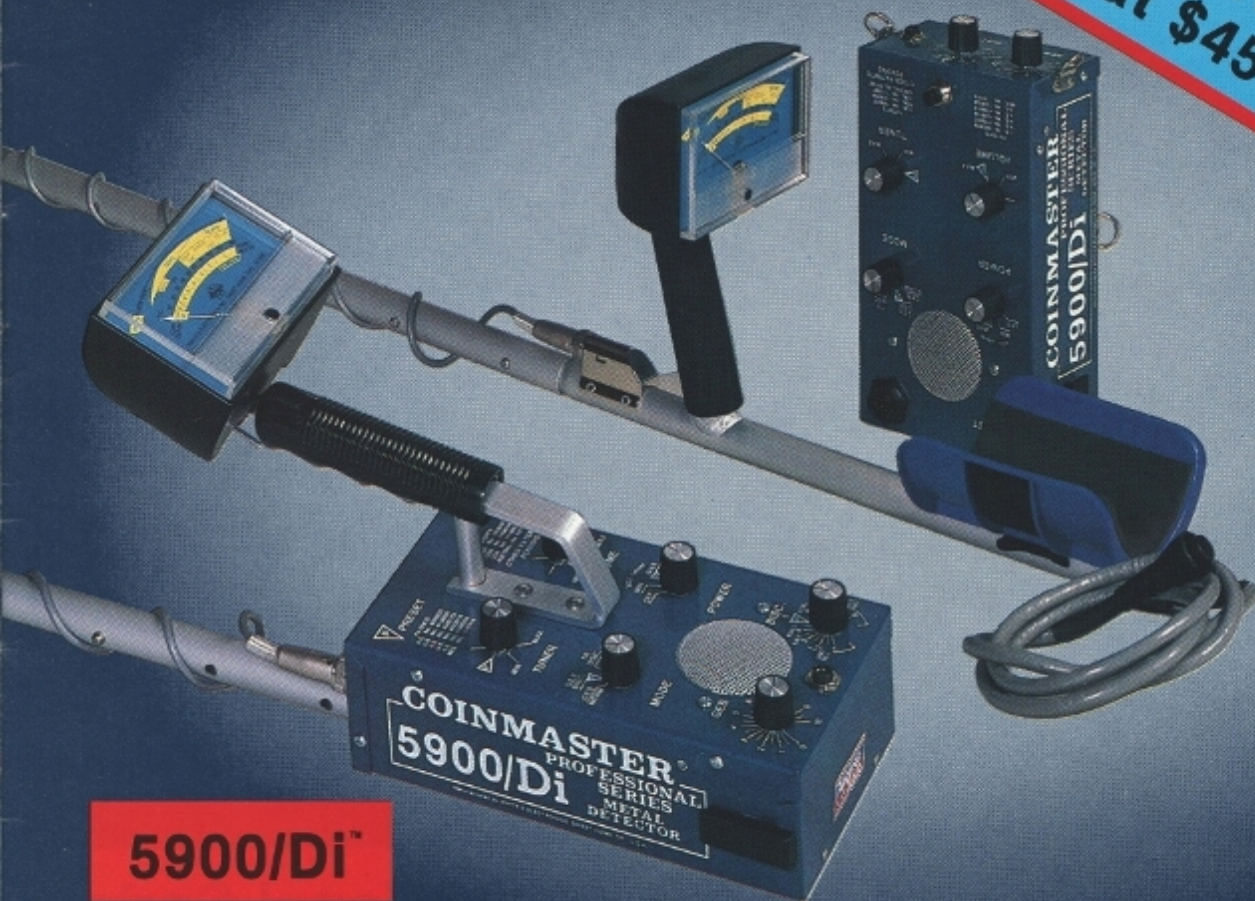
More on the

6000/Di™ Pro



- **Automatic GEB with AutoTrac™**
- **Sensitivity Control for Maximum Depth**
- **Visual Discrimination Indication (VDI)**
- **PRESET** 
- **True Automatic GEB** - Unlike other detectors which claim to have automatic ground balance, White's Automatic GEB with AutoTrac™ is not simply factory set. Auto GEB actually samples the ground and electronically sets the detector for maximum sensitivity and depth. Set the Di Pro on AutoTrac™, and the detector continually monitors ground conditions and electronically resets to maintain peak performance
- **Trigger Switch** - Electronic switching at your fingertip; changes modes, switches meter from VDI to Depth Reading, and retunes
- **Increased Depth** - Sensitivity Control and Automatic Ground Balance combine for maximum depth, more usable depth than ever before
- **Depth Reading** - Probable depth reading to 9" and deeper on coinsized objects. Detection and pinpointing possible to several feet on large objects
- **4½ Inch Meter** - Easy viewing of VDI and Depth Reading. Target Identification lets you see at a glance what you've located
- **Rechargeable Battery System** - Nickel Cadmium batteries can be recharged up to 1000 times. Charger included. Back up pack for alkaline "C" cells included
- **Slow-sweep GEB/Motion Discrimination**
- **Four Modes of Operation** - Use Automatic Ground Balance in the 3 GEB modes for total flexibility
 - GEB/NORM: Detects all metals while neutralizing ground mineralization
 - GEB/DISC: Discriminates against junk while neutralizing ground mineralization
 - TR/DISC: Discriminates against junk or rejects ground mineralization
 - GEB/MAX: Detects all metals while neutralizing ground mineralization. (Detects 33% deeper than GEB/NORM)
- **Hipmount Conversion Kit** - Convert the Di Pro easily to a Hipmount model. (See Accessories, Page 22)
- **Simplified Instructions** - Quicklook sections on each control for the simplest operation
- **\$649.95**

Great Value
VDI at \$459.95



5900/Di™

Visual Discrimination at a great price! A value-packed detector for beginners and experienced treasure hunters alike. Visual Discrimination. Depth Reading. PRESET ∇ ™ . One of the best detector buys on the market today.

- Visual Discrimination Indicator (VDI) - Meter shows the probable identity of a target in all 4 modes
 - Depth Reading - Probable depth reading to 9" and deeper on coinsized objects. Detection and pinpointing possible to several feet on large objects
 - PRESET ∇ ™ - When set to these positions, the 5900/Di will operate well in most conditions
 - Trigger Switching - Fingertip squeezing regains threshold, switches between modes, and switches the meter from Visual Discrimination to Depth Reading
 - Four Modes of Operation - GEB/NORM, GEB/DISC, TR/DISC, GEB/MAX
 - VDI Sensitivity - Power switch has Low and High position for setting the sensitivity of the meter
 - VDI Reading - One sweep usually sets the VDI meter reading
 - Beefed-Up Audio Signal - Gives quick, loud tone
 - Slow Sweep Speed
 - Increased Sensitivity for More Depth
 - Excellent Balance - Allows you to hunt longer, in more comfort
 - Simplified Instructions
 - Power Supply - 4 alkaline "C" cell battery pack
 - \$459.95
- 5900/Di Hipmount Features:**
- 4½ Inch Meter Mounted on the Probe - Lets you see VDI and Depth Reading at a glance while you hunt in comfort for hours
 - Auxiliary Push Button - Functions like the Trigger Switch
 - GEB and DISC Controls - Located on top of the box for easy adjustment
 - \$529.95

4900/D

49'er
goes for
the Gold!



white's Professional Series

3900/D



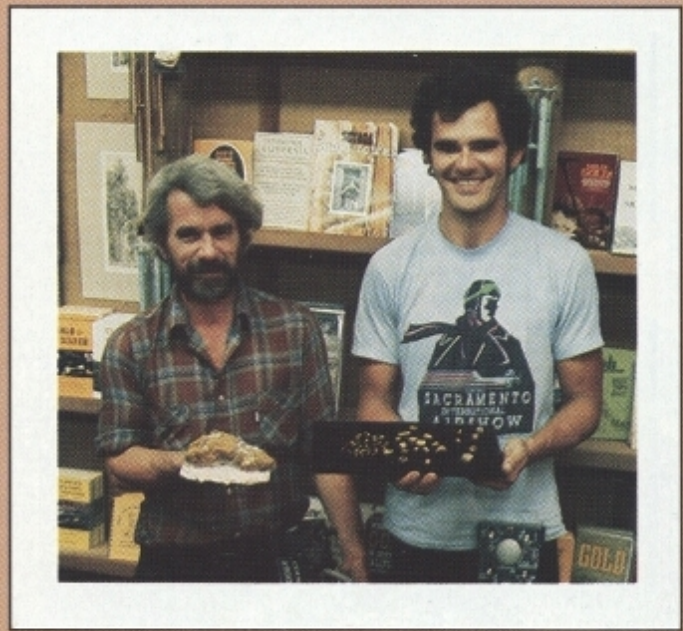
Simplicity Plus!
Great Depth!

Designed by a team of professionals for the special needs of prospectors, relic, beach and coin hunters working in difficult soil conditions. An all guts detector with full depth, plus the ability to cancel extreme ground mineralization whether searching in the All Metal or Discriminate mode.

- Sensitivity Control - Attain the maximum usable depth soil conditions will permit
- 10-Turn GEB Control - Allows easier tuning and more control in extreme mineral conditions. Double-stacked tuner for fine tuning during ground balancing
- Null Bands - Clearly marked on GEB and DISC controls for increased ability to distinguish between ferrous and nonferrous metals
- PRESET ∇_{m} - Sets the detector to operate well under normal conditions
- Push-button Retuning - Simply press and release
- S.A.T. - Self-Adjusting Threshold automatically maintains a stable threshold. (Great for beach hunting)
- Detailed Instruction Manual - Sections for specialized hunting needs. Written by professional treasure hunter Jimmy "Sierra" Normandi
- Power Supply - 4 alkaline "C" cell pack included. Rechargeable Nicad system optional
- \$299.95

The simplicity of only 2 controls with the performance and features found on detectors costing hundreds more! Balances out ground minerals and discriminates against junk.

- Two Modes - GEB/DISC and GEB/NORM: Ground balance and discriminate against junk, or ground balance and detect all metals
- Trigger Switch - Detect a target in GEB/DISC, pull the trigger and switch to GEB/NORM for accurate pinpointing. Push the trigger forward and lock in GEB/NORM
- S.A.T. - Self-Adjusting Threshold maintains a stable threshold over varied ground conditions
- PRESET ∇_{m} - ∇_{m} positions on the Tuner and DISC controls set the detector to operate well under most conditions
- 4½ Inch Meter - Mounted on the handle for easy viewing and excellent balance. The Intensity Scale indicates signal intensity in terms of numbers from 0-100
- Power Supply - 4 alkaline "C" cell pack included. Rechargeable Nicad system optional
- \$289.95



Modern Day Gold Rush

by Bob Frye

I first became interested in metal detecting when gold peaked at \$800.00 an ounce. I knew the 49'ers had missed as much as they had found, so I started panning and dredging with a lot of effort and little to show. I did, however, benefit from the knowledge I gained on how and where to find gold. Until I learned the ropes, my luck was disappointing. When I melted some small placer gold together for a sample piece and used it for comparisons, I found my first real nugget.

Since then my prospecting has not been the same. That summer I found 3 ounces of gold with my 6000/D Series 2. With finances permitting, in late summer of '85, I bought a 4900. The price of the unit and the field test helped me make my choice. I was searching old river beds the first weekend with my new unit, and on the second day I found a ½ ounce nugget. So, with just three days of use, I paid for my 49'er twice over.

I invited Mike Bowers of Rancho Cordova, CA to come along with me on the next trip thinking I had probably recovered most of the gold. Armed with his new Di Pro and 8 and 10 inch loops, Mike found 4 ounces of gold. I had always used a 4 inch coil for weight and stability, but now wondered if bigger could also be better.

The next weekend I made up for missing out on that 4 ounces of gold when I found a 13.5 ounce gold and quartz rock. It was in front of an old mine shaft sitting on top of a pile of rocks. No telling how it was missed by the 49'ers. Possibly someone was high grading and never came back for their gold. The rock was black with a hundred years of moss and dirt, but my 4900 helped me discover what others had missed. Thanks to White's for helping dreams come true, and a sure cure for yellow fever to find more gold.

A new lightweight design for nonstop hunting plus the proven performance of the Di Pro!

white's Liberty™ Series

Depth and More Depth.

Use the Liberty Di in an area you've already worked with any other comparably priced detector. Find what the others left behind!



Silent or Audio Search. You Choose.

Liberty Di™

You told us you wanted VDI and Auto GEB in an easy-to-operate lightweight package.

You got it. And more. . .

A New Standard in Comfort and Balance.

Natural arm extension rod with cushioned grip and armrest gives the Liberty Di great balance. Light, super slow sweep GEB/Motion Discrimination for hour after hour of hunting comfort and performance.



Simple Sophistication. Finally, a detector that doesn't sacrifice performance for second-rate simplicity. No complicated gadgetry. Just the controls you need to get results.

- Select Auto GEB and lock in for a specific ground condition. Switch to AutoTrac and the Di continually samples the ground and resets.
- Set the Sensitivity Control at ∇ for excellent depth in normal conditions. Adjust to the Black Sand Range for hunting in black or magnetic sand. Or turn the SENS control to the limit where soil conditions permit!
- Choose any level of discrimination, from detecting all metals to specific targets. Squeeze the trigger, and instantly switch to the powerful GEB/All Metals mode. Now, a GEB/All Metals mode with fully adjustable sensitivity!
- Search in silence or with audio threshold. The same maximum depth of detection.



Available
May '86
at Authorized
White's Dealers!

Full-Range VDI.

All the important meter readings you depend on. Target ID bands and VDI numerical scale let you know what you've detected before you dig. After you've detected a target, pull the Trigger Switch and the meter indicates Depth Reading.

Automatic GEB with AutoTrac™

Just flip a switch and the Liberty Di adjusts automatically to ground conditions to maintain maximum depth. As you sweep the loop, AutoTrac™ monitors even slight changes in ground mineralization and electronically resets the detector. Or you can lock in for a specific condition. The best detector performance, no matter what the conditions. True Automatic GEB. Available only on the Di Pro and the Liberty Di. Exclusively from White's.

(For more on the Liberty Di, turn to page 12.)

More on the

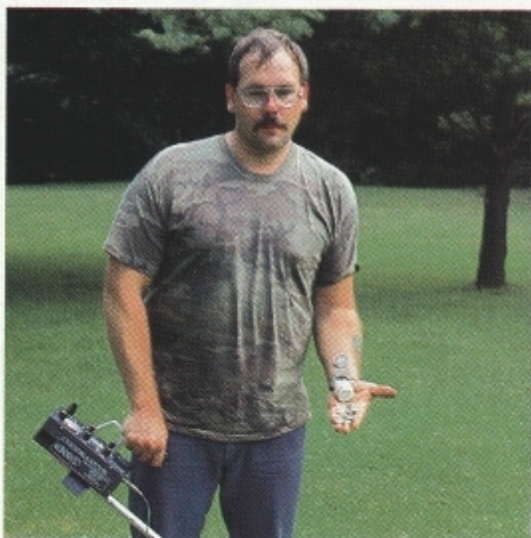
Liberty Di™



- Automatic GEB with AutoTrac™
- Full Function VDI
- Depth Reading
- Sensitivity Control for Maximum Depth
- Threshold Button for Silent or Audio Search
- Trigger Switch – Switches between GEB/DISC and GEB/All Metals. Switches meter from VDI to Depth Reading, and retunes
- GEB/DISC – Discriminates against junk while automatically neutralizing ground mineralization in Auto/GEB. DISC control allows you to vary the level of discrimination
- GEB/All Metals – Powerfully detects all metals while automatically neutralizing ground mineralization in Auto/GEB. Fully adjustable sensitivity in an All Metals mode
- Slide-in Rechargeable Battery Pack – Sealed pack slides conveniently into armrest without connecting wires. Charger included
- Lightweight and balanced for hunting comfort
- Low Battery Alert Light
- \$559.95

Do You Have a Story?

The main thrust of White's will always be toward making the finest metal detectors in the world. Our literature, including the White's Guide to Electronic Treasure Hunting and Discover magazine, reflects the many successes that our customers have with our Instruments. If you have a story you would like to share with us and other treasure hunters, just write it in your own words and send it to Discoveries, c/o White's Electronics, 1011 Pleasant Valley Rd., Sweet Home, OR 97386. Pictures always make a story more exciting, and we prefer color slides. We would like to hear from you!



Caching In

Chuck Christianson of Lenox, Massachusetts discovered this coin cache under the front steps of an abandoned house. After removing one of the steps, Chuck's detector sounded off loudly and he uncovered a large metal pot. Two jars were buried in the pot, which was filled with topsoil. The larger jar contained two silver Dollars dated in the 1800's. Chuck later discovered they were Morgans. The smaller jar was nested inside the larger one, and held a total of 24 coins. The coins included an 1893 V Nickel in Very Fine Condition, 1 Busted Dime, 1 Seated Dime, and 21 Barber Dimes.



Beginners "Luck" by Wallace Slattery

"What on Earth is it?" My twelve-year-old son David and I gazed in utter bewilderment at the quarter-size silver disc which had just fallen into our hands from a 3½-inch-deep dirt clod. We could make out a large crown on one side, two pillars on the other, and the letters "GR" stamped in the middle on both sides. The 1756 dated coin was unique to us—we had never seen anything like it.

If I had been a serious coin collector and treasure hunter for many years, I would probably have had an idea of what we were holding; but I was not; and that's why I am writing this article. If rank amateurs like David and I can find valuable, rare coins, anybody can—if one has high-quality equipment such as the White's 6000/DI Series 3 detector, which we were using.

You see, we are the greenest of greenhorns when it comes to metal detecting. I only began this hobby last January with a cheap detector of another make. Living on the edge of 100+ acres of wooded Pennsylvania farmland, it occurred to me that those old hills just might contain antique coins. So I picked up a cheap detector, and spent many happy hours roving the woods and local parks. I found an old trap and a rifle receiver, and many modern coins in the parks.

But I began to realize that buying a low-quality detector was a real mistake. In the first place, while I was detecting in a nearby park, I learned from an old-timer that other treasure hunters with good equip-

ment were digging many OLD coins in that two-century-old park. My detector simply could not reach the depths required to find those old relics. In the second place, the detector's primitive discriminator could not differentiate between soda pop caps and pop tabs, as opposed to coins; and I was unwillingly cleaning a lot of trash out of the local parks. Something had to be done. So I copied some addresses of metal detector firms out of a treasure magazine and sent off for various metal detector catalogs. When they came, I examined them carefully. I finally decided that if I were to become a hobbyist treasure hunter, I would rather use the best equipment available, so I purchased the White's 6000/DI Series 3 detector.

I was astounded at how quickly David and I were able to catch on to its successful use. Running this detector is like counting to 1-2-3. Like most treasure hunters I will always remember our first "wheatie", the first silver dime and quarter we uncovered, and the early Indianhead pennies. We even found a late 1850's flying eagle cent seven inches deep in the ground!

The day we found the strange coin, David and I had elected to treasure hunt an old factory area. For about an hour the area was a real letdown to us. We recovered a 1911 "wheatie" cent and some modern coins. When the detector signaled "quarter" between three and four inches deep, we expected just another clad coin. Well, that's when we received our surprise!

This amazing coin had us stumped. I was guessing that it was early French or English. David and I drove to the nearest coin shop and produced our discovery for the owner's inspection and identification.

"Wow! It's genuine!" was his first startled reaction. He quickly identified it as a Spanish two-reale piece, but was unable to locate the exact coin in his various catalogs. This was only the first of several failures by various coin dealers to identify and place a value on the coin. We finally found two dealers in rare coins who identified it as a Spanish provincial coin minted in Mexico, which was counter-stamped by the British with the letters "GR" (George Rex—George the king) and placed in circulation in the American colonies. These dealers placed the value of the coin at upwards of \$1,000! No doubt its loss had caused the original colonial owner a great deal of grief, as it probably represented several days' wages in those days.

I haven't stopped treasure hunting since we found that Spanish coin, either. Every chance we get, David and I are out somewhere detecting, and the finds keep rolling in. Just the other day we found an 1818 large cent—our first large penny.

I hope my story will inspire every amateur who reads it. Yes, there are many old coins and relics in the ground, just waiting for someone to find them. Even AMATEURS can make spectacular finds. No hobby has ever "grabbed" me like treasure hunting has, and it continues to rivet my interest. So arm yourself with a White's detector, and go find your own prize!

Improved
Design for
'86!

Liberty™ II

White's lowest priced GEB/Motion Discriminator. Slow-sweep speed and lightweight design allow you to hunt in comfort for hours. A great detector for new treasure hunters!

- GEB/Motion Discrimination - The convenience of discriminating against junk, and the versatility of Trigger Switching to All Metals. Detect a target while discriminating, then pull the trigger and instantly switch to zero discriminate for accurate pinpointing in All Metal Mode
- Sensitivity Control - Full range sensitivity for maximum depth
- PRESET ∇ - Set the DISC and SENS controls to ∇ for the convenience of discriminating out junk, plus optimum sensitivity and depth in most conditions
- Lightweight Comfort - Natural arm extension rod with cushioned armrest and grip. Just 3 lbs.!
- Power Supply - 9-Volt Pack of 6 "AA" batteries mounted in armrest. Optional Rechargeable Nicad System available
- \$219.95

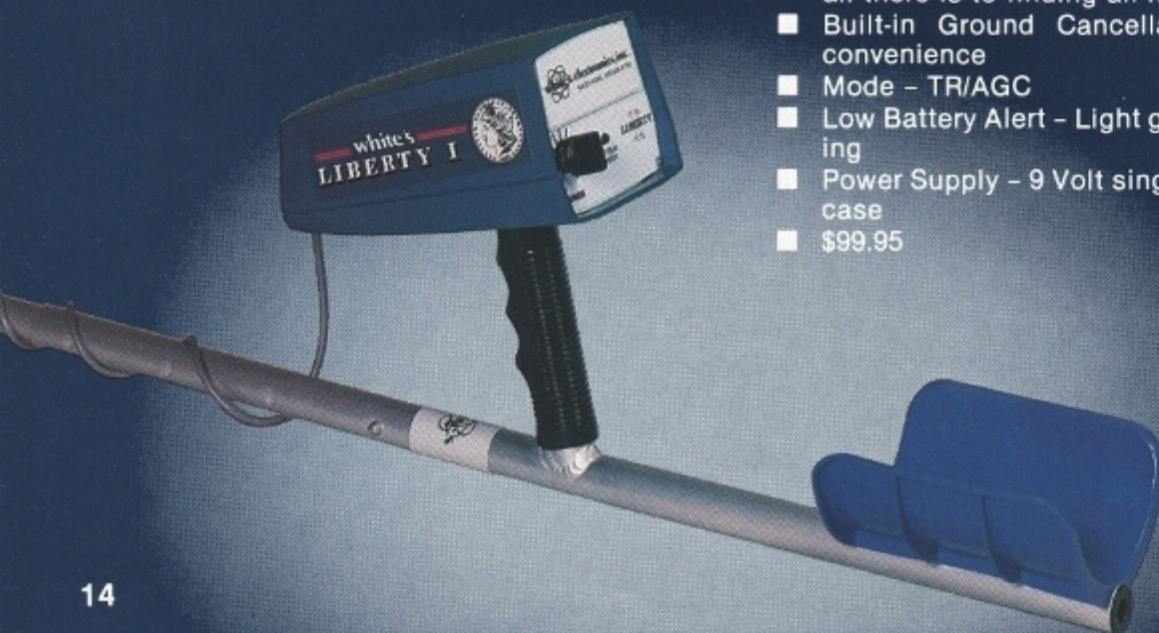


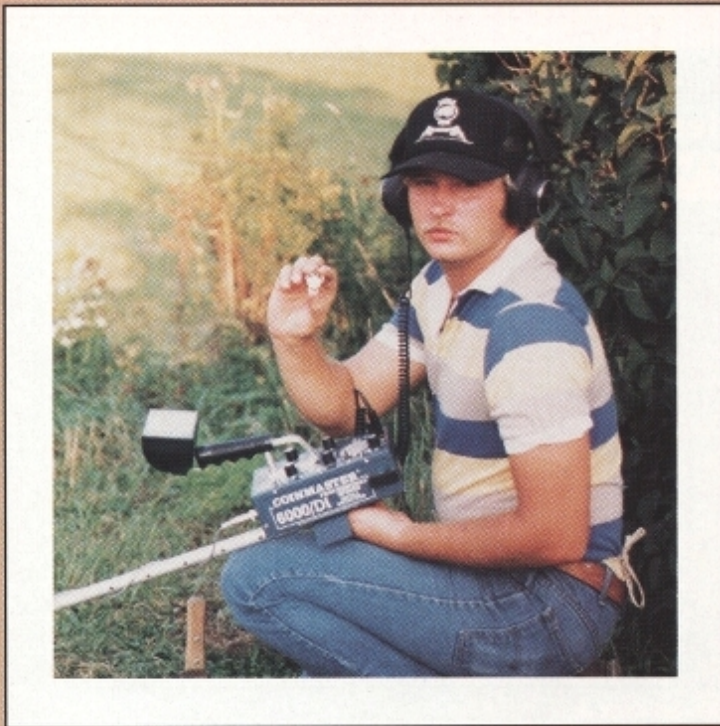
white's Liberty™ Series

Liberty™ I

One control for super-simple detection. Finds it all while you hunt comfortably in the Liberty style.

- One Turn Tuner - Sets threshold tone and volume; that's all there is to finding all metals
- Built-in Ground Cancellation - Factory set for your convenience
- Mode - TR/AGC
- Low Battery Alert - Light glows when battery needs replacing
- Power Supply - 9 Volt single transistor battery mounted in case
- \$99.95





Digging Up the Past

by Jason Krider

My home has a lot of history, dating a hundred years plus. At various times, it was a log cabin, saloon, house of pleasure, and a general store. With all this history, I knew there had to be a lot of treasure in the ground. I used another detector for about two years and dug up a few old pennies, some silver coins, and a few relics, but nothing of any great value. I searched many times, and always came up empty handed. I began to think that someone must have brought in fill dirt, and that the coins were too deep to detect.

Recently I purchased a 6000/DI Pro, and the first place I searched was my own yard. In just a few minutes I was finding coins like someone had planted them there while I was away. I found close to twenty dollars in clad coins, an old whistle, two hinges, part of an old sleigh bell, five silver Dimes, three silver Quarters, two 14K gold rings, a religious metal, a 1927 dog license, a 1904 world's fair metal, and a 1904 Presidential coin. My best find was about 8" deep, under a brick. It was a gold Swiss brooch watch in excellent shape and still working. The 6000/DI Pro is a detector to beat all detectors. I can't wait to go over the ground that others and I have already searched.



A Boy and His Detector

by Forest Archer

On my eleventh birthday my dad gave me a Liberty II metal detector. I am very happy with it because it is fun to find treasures with it. I have taken my metal detector many different places and I have found many different things. My most favorite treasure I have found is a silver charm in the shape of a Viking boat. However, I have found many other interesting things. When I took it to the beach I found many bullets, coins, and an earring. When I took it to the park I found two earrings, two dollars in coins, and an exotic coin. I have enjoyed my Liberty II metal detector so much that my dad is going to buy one for himself so that we can go to Arizona to look for nickel meteorites together.

white's Specifications

Comparison of Features	Professional Series				Liberty Series			Series 3			
	6000/Di	5900/Di	4900/D	3900/D	Liberty Di	Liberty II	Liberty I	5500/D	2900/D	2000/D	1000
Automatic GEB	■				■						
AutoTrac™	■				■						
Visual Discrimination (VDI)	■	■			■						
Depth Reading	■	■			■			■			
Meter	■	■		■	■			■			
PRESET ∇ ™	■	■	■	■	■	■		■	■		
GEB NORM	■	■	■	■	■	■		■			
GEB DISC	■	■	■	■	■	■		■			
TR DISC	■	■	■					■	■	■	
GEB MAX	■	■	■					■			
Manual GEB		■	■					■		■	
Ten-Turn GEB			■						■		
Variable Discriminate	■	■	■	■	■	■		■	■	■	
Sensitivity Control	■		■		■	■					
Volume Control	■	■						■	■	■	
Trigger/Button Retuning	■	■	■	■	■	■		■	■	■	
Trigger/Button Mode Switch	■	■	■	■	■	■		■			
Self-Adjusting Threshold			■	■		■		■			
Ground Adjustment									■		
Interchangeable Loops	■	■	■	■	■	■		■	■	■	
Leadless Battery Pack	■	■	■	■	■			■			
Low Battery Alert L.E.D.				■	■	■	■	■	■	■	■
Battery Check	meter	meter	LED	LED	LED	LED	LED	meter	LED	LED	LED
Rechargeable Batteries	STD	OPT	OPT	OPT	STD	OPT	OPT	STD	OPT	OPT	OPT
Weight with Batteries	5lb 4oz	5lb	4lb 6oz	3lb 9oz	4lb 8oz	3lb	2lb 12oz	4lb 13oz	3lb 9oz	3lb 4oz	3lb 2oz
Operating Frequency (Khz)	6.59	6.59	6.59	6.59	6.59	6.59	12.5	6.59	6.59	6.59	12.5
Headphone Jack	■	■	■	■	■	■	■	■	■	■	■

Product Specifications and prices subject to change without notice. Prices are suggested retail. Prices effective March 1, 1986.

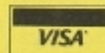
White's instruments are protected by one or more of the following patents:

U.K. 1548239	U.S. 4030026
U.K. 2014316	U.S. 4293816
CAN 1038036	U.S. 4128803
CAN 1118867	U.S. 4249128
CAN 1165817	U.S. 4110679
AUS 524793	U.S. 4024468
AUS 531967	
MEX 147016	Other Patents Pending
FR 2416485	

White's detectors and accessories are available from an Authorized Distributor, Dealer, or Service Center. Dealers also carry additional accessories for White's instruments that are not shown in this catalog.

COINMASTER® and TREASUREMASTER®, are registered trademarks of White's Electronics. PRESET ∇ ™, AUTOTRAC™, Di™, and LIBERTY™ trademarks are pending registration.

For the Location of your nearest White's Distributor, Dealer or Service Center call TOLL-FREE: 1-800-547-6911
Or Find Us Fast in the Yellow Pages



At Participating Dealers

white's Series 3

5500/D

Depth Reading plus slow-sweep GEB/Motion Discrimination at an affordable price

- Depth Reading - Meter shows you the depth of coinsized targets
- PRESET ∇_w - Everyone can use this detector, even without reading the instructions
- Trigger Switch - Activates depth, changes modes and retunes
- Four Modes - GEB/NORM, GEB/DISC, TR/DISC, GEB/MAX
- S.A.T. - Self-Adjusting Threshold automatically maintains stable threshold
- Rechargeable Nicad Battery System - Nicad batteries and charger
- Large Meter - Shows Depth Reading and signal intensity, creates excellent overall balance
- \$399.95

2900/D

Discriminate against junk or, balance out ground mineralization

- PRESET ∇_w - Everyone can use this detector, even without reading the instructions
- Push-Button Retuning - Simply press and release to regain threshold tone
- Ground Adjustment Control - Sets the detectors sensitivity to ground mineralization
- Mode - TR/DISC
- Low Battery Alert - Light glows when batteries need replacing
- Power Supply - 9 Volt "AA" batteries
- \$179.95

2000/D

White's lowest-priced TR/Discriminator!

- Push-Button Retuning - Simply press and release to regain threshold tone
- Variable Discriminator
- Ground Rejection Capability
- Mode - TR/DISC
- Low Battery Alert - Light glows when battery needs replacing
- Power Supply - 9 Volt Battery
- \$139.95

1000

White's easiest to operate detector. One control finds it all!

- One Turn Tuner - Sets threshold tone and volume; that's all there is to finding all metals
- Automatic Ground Cancellation - Built-in for your convenience
- Mode - TR/AGC
- Low Battery Alert - Light glows when battery needs replacing
- Power Supply - 9 Volt "AA" batteries
- \$99.95

**The Proven
Treasure Finder!**

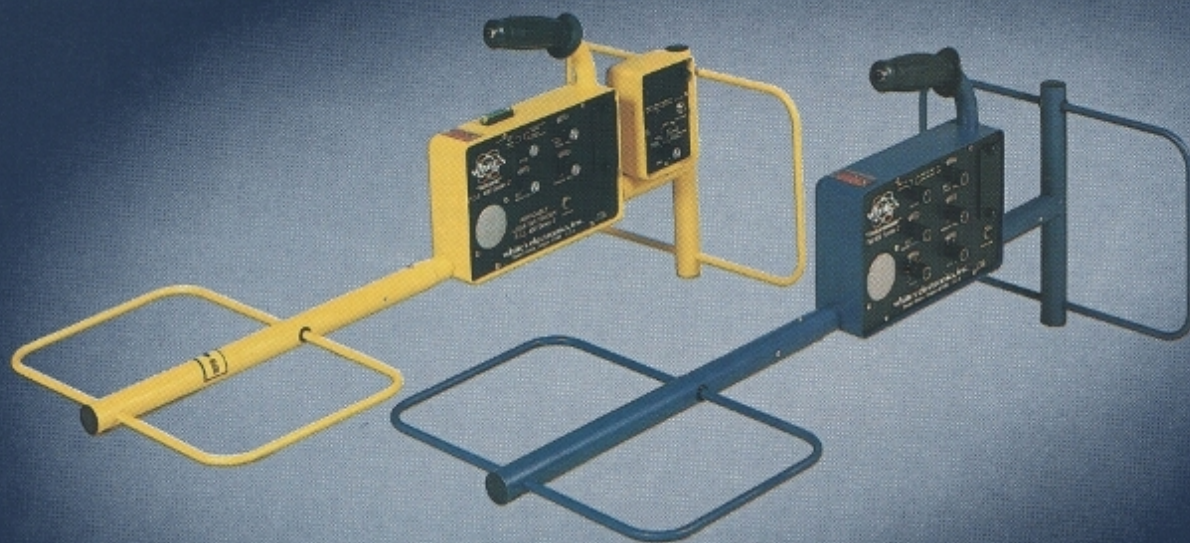
PI 1000



white's Specialty Detectors

PCL 400

TM 600



A Pulse Induction unit that can't be beat for surfdiving or salvaging down to 200 feet. Outperforms other underwater detectors. . .even those costing twice the price. Great for both the hobbyist and professional diver, the PI balances out salt and mineralization to detect even small objects at remarkable depths.

- 3 Detection Signals – Mechanical vibrator to hear and feel, plus an LED to see
- Single Control – Turns the unit on, checks batteries, automatically balances saltwater and mineralization, and tunes for the search location
- Excellent Sensitivity and Depth – Detects even a Spanish ½ Reale (half the size of a dime) buried for centuries; detects up to many feet on larger than coinsized objects
- Pulse Induction – Detects all metals, nothing is missed on land or in water
- Stable Performance and Circuitry – Unaffected by saltwater and mineralization. Does not drift out of tune with changes in temperature or depth
- Adjustable Rod – Adjusts from 21" to 31" ; electrostatically coated for resiliency
- Power Supply – 6 "AA" Alkaline batteries or optional Rechargeable Nicad Battery System
- Accessories – Includes 13" rod extender to adapt the unit for specialized land hunting, add-on weights to alter buoyancy, and headphone adaptor for mechanical vibrator
- Bright Orange Color – Visible even in the darkest water
- \$499.95

White's PCL 400 Pipe & Cable Locator is designed to locate and trace pipes and cables in the ground at depths from several inches to several feet.

- Ground Reject Control – Balances out ground mineralization for use in a wide range of conditions
- Transmit Coil – Can be separated from unit to induce signal into a pipe or cable for accurate tracing; 2 boxes full of electronic detection
- Push Button Tuner – Retunes to preset calibrations
- Top Mounted Meter – Shows signal intensity and battery strength
- Bubble Level – Used in the Trace Mode to make accurate measurements
- Power Supply – 9 Volt battery pack with 6 "AA" batteries for 20-40 hours of continuous use
- Sensitivity Control – Adjust for maximum depth of detection
- Solid Aluminum Frame – For rugged field use; snap together frame for easy storage
- Clip-on Accessory Jack – For tracing and for optional inductive probes
- \$649.95

Use the Treasuremaster® 600 Cache Locator when searching for larger than coinsized objects at depths greater than 2 feet.

- Ground Reject Control – Balances out ground mineralization for the best detection of ferrous and non-ferrous metals
- Push Button Tuner – Retunes to preset calibrations
- Top Mounted Meter – Shows signal intensity and battery strength
- Electronic Nulling Controls – Allow the operator to detect non-metal items such as holes, caves, voids, or old wells
- Sensitivity Control – Adjust for maximum depth of detection
- Solid Aluminum Frame – For rugged field use, and snap-together frame for easy storage
- Power Supply – 12 Volt battery pack contains 8 "AA" batteries for 20-40 hours of continuous use. Rechargeable Nicad System available
- \$599.95



Healthy, Wealthy, and Wise

Between Oregon rainshowers, Joseph Bonner hurries out each day to get in a few hours of metal detecting. If by chance, the rain doesn't stop and he can't get out with his Di Pro, serious cabin fever sets in. Joseph began treasure hunting in May 1984 with an inexpensive detector. He promptly found an 18K gold mans diamond ring, and he was hooked. He graduated to a Di Series 3, and on to the Di Pro he currently uses.

Joseph's vigor and enthusiasm for life weren't always so strong. When he had a stroke and was forced to retire from his tire business, his children were concerned that his health would continue to deteriorate, and he would be relegated to a sedentary, unfulfilling life.

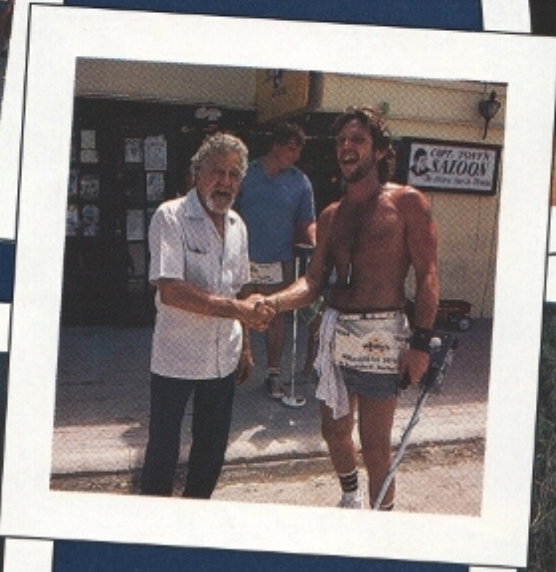
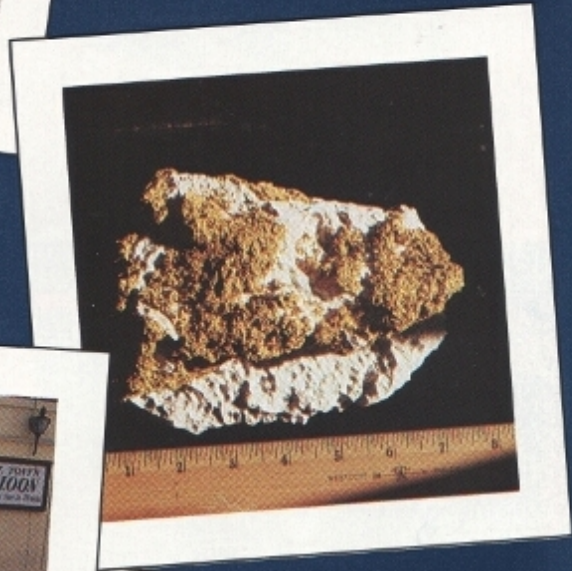
You can imagine the surprise when 68-year old Joseph actually played and ran the bases in a family baseball game last Easter, something he had not been able to do for over 10 years. He gives his new-found sport all the credit. Not only has he accumulated a sizeable bank account and a safety box full of jewelry, but he has gained the most valuable treasure of all—better health.



Chasing Rainbows

White's not only builds the world's finest metal detectors, they use them with great success, too. Vice President Kenneth R. White and his wife, Mary, skipper the 50 foot treasure salvage boat, the RAINBOW CHASER, which operates off the Florida Gold Coast. Pictured are some of the rare and valuable treasure, found on the 1715 Plate Fleet with the White's PI 1000 underwater detector, which includes Spanish ½ and 1 Reales, silver spoons and forks, a pottery jug in mint condition, Pieces of Eight, and a 1 escudo Spanish gold coin.

Many people do not realize that the name "Gold Coast" originated from the large amount of treasure lost and found along Florida's east coast. Just one hurricane on July 30, 1715, scattered 11 ships along the Florida coast.



Megan Carroll
Courtesy of El Dorado Gazette

white's Accessories



Part #	Description	
1. 401-0008	Deluxe Headphones	\$23.95
2. 401-0116	Standard Headphones*	12.95
3. 501-0026	8" Loop Cover	3.95
4. 501-0060	4 "C" Cell Battery Holder	4.95
5. 500-0167-1	Tall Man Rod*	5.95
6. 509-0012	10 Cell Nicad Chgr	8.95
7. 509-0013	9V Trans Nicad Charger	6.95
8. 509-0014	6 & 8 Cell Nicad ChgrS2	8.95
9. 509-0016	Nicad Charger 4000/D S2	6.95
10. 509-0017	Nicad Charger 6000/Di S3	9.95
11. 509-0018	Nicad Charger Auto	9.95
12. 509-0912	8 & 10 Cell Nicad ChgrS1	8.95
13. 510-0002	12 Volt 228 Battery	16.00
14. 510-0004	9 Volt 246 Battery	10.00
15. 510-0006	1½ Volt W353 Battery	15.00
16. 510-0009	67½ Volt 467 Battery	25.00
17. 510-0012	90 Volt 490 Battery	25.00
18. 510-0018	1½ Volt Penlight Battery	@ .45
19. 511-0002	1½ Volt "C" Cell Battery	@ 1.25
20. 512-0012	10 Cell Nicad Pack S1	30.00
21. 512-0013	9 Volt Trans Nicad	12.95
22. 512-0014	6 Cell Nicad Pack 7.2V	17.00
23. 512-0018	8 Cell Nicad Pack 9.6V	22.00
24. 512-0016	4.8V Nicad Pack	34.95
25. 523-0005	9 V Penlight Holder	1.00
26. 523-0006	12 V Penlight Holder	1.00
27. 600-0185	Found! Treasure Stories	4.95
28. 600-0187	Those Elusive Gold * Nuggets (nugget hunting techniques)	4.95
NEW!		
29. 601-0047	Universal Vinyl Bag	19.95
30. 601-0048	Hipmount Vinyl Pouch*	8.95
31. 601-1049	Hard Carrying Case S3	29.95
32. 601-1078	Shock Proof Carry Cs.S2	29.95
33. 601-1126	DIS3 H/M Hard Carry Cs.*	34.95
34. 601-1127	Small Coin Probe	6.95
35. 601-1128	Large Coin Probe	7.45
36. 621-0218	Intro. to GEB Cnmstrs. (including 6000/Di S3 & 6000/Di Professional)	5.95
37. 801-3117	15" Loop	79.95
38. 801-3118	4" Loop	59.95
39. 801-3178	10" Loop	69.95
40. 802-5096	Clevis Kit *	5.95
41. 802-5096-1	Heavy Duty Clevis Kit	6.95
42. 802-5128-9	Compact HM Conv. Kit	39.95
43. 802-7071	Loop Adaptor Interchange S/2, S/3, and Pro loops with Liberty loops	14.95
NEW!		
44. 802-7073	Attenuator Expands detector capa- bility in salt, black sand, or highly mineralized ground	24.95
NEW!		

* Accessories Not Shown



- Treasure Hunter T-Shirt - 100% Cotton with silk-screened emblem. Available in light blue, light yellow, or light gray. Sizes S - XL. **\$6.95***
- Baseball Jacket - Lightweight nylon shell and combed cotton lining. Light gray with contrasting logo. Sizes S - XL. **\$24.95***
- Baseball Hat - Foam front with nylon mesh back. One size fits all. **\$4.95***
- Crewneck Sweatshirt - 50% cotton, 50% acrylic. Navy blue with contrasting logo. Sizes S - XL. **\$11.95***
- Quilted Vest - Lightweight nylon outer and polyester fill. Royal blue with embroidered logo. Sizes S - XL. **\$21.95***
- Golf Shirt - 50% cotton, 50% polyester. Available in light gray or navy with contrasting logo. Sizes S - XL. **\$12.95***

* Suggested Promo. Prices



For a **FREE** White's '86 Guide to Electronic Treasure Hunting and your nearest Authorized White's Dealer, Call **TOLL-FREE: 1-800-547-6911** (Hours 7-4 P.S.T.)

Inside Oregon: 503-367-2138 *Or Find Us Fast in the Yellow Pages!*

Over 2,000 Dealers nationwide to serve you! **DEALER INQUIRIES INVITED**



1011 Pleasant Valley Road
Sweet Home, Oregon 97386

Bulk Rate
U.S. Postage PAID
White's Electronics, Inc.

Address Correction Requested