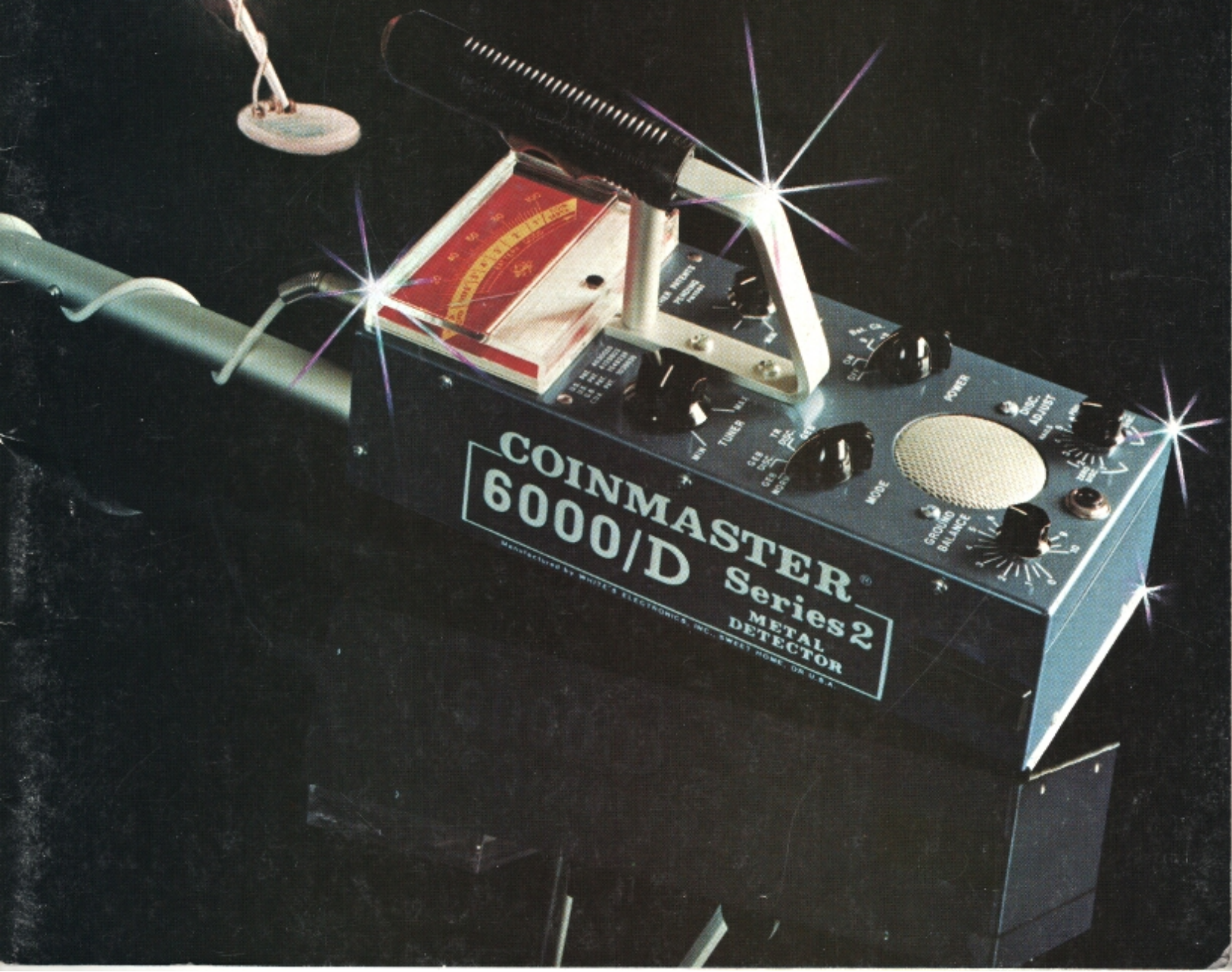


# 1981 CATALOG OF MINERAL-METAL DETECTORS

white's



# Kenneth & Olive White

WHITE'S ELECTRONICS, INC., (owned and operated by Kenneth G. White Sr., Mrs. Olive White and Kenneth R. White Jr.), manufactured its first treasure finding machines in 1950. They were OREMASTER Super Geiger Counters.

The credit for White's shift from radio to detector technology goes to Olive and her penchant for prospecting and geology.

Olive suggested Ken join her on a trip to Idaho to search for uranium. He immediately began to think about how ore bodies could be detected electronically.

From Geiger Counters to Electronic Mineral/Metal Detectors, the White's started a company which has become the largest manufacturer of Mineral/Metal Detectors today.

White's machines have undergone sweeping changes in the last fifteen years. Late 1965 saw the first of their transmitter-receiver detectors, the GOLDMASTER 66TR. From there White's started researching one of its most important innovations, various sizes of TR loops to give the treasure hunter greater flexibility. More improvements followed, as tubes gave way to transistors, then to printed circuits and solid state engineering.

As welcome as the TR discriminators were, perhaps the biggest breakthrough of all appeared in 1974 - the COINMASTER 5 G.E.B. Supreme. Transmitting at the lower end of the frequency spectrum, the Ground Exclusion Balance process enabled the Supreme to cancel the effects of ground mineralization and penetrate to depths previously unheard of (2 to 4 times deeper!). This revolutionized the metal detector industry.

The years since haven't done much to eclipse the Supreme's glory. It has been the sire of many an illustrious offspring - from the COINMASTER 5, G.E.B./Discriminator, through the COINMASTER 5000/D, finally leading in 1978 to the much acclaimed 6000/D. And now in 1981 the advanced technology of the 6000/D SERIES 2. Nor have the years done much to curb the creativity or diligence of Ken White, Senior.



# TOP MANAGEMENT TEAM . . .



**KENNETH R. WHITE**  
Vice President



**NORMAN VANDIVER**  
General Manager



**KEN POWIS**  
Marketing Manager



**BILL COLSON**  
Manufacturing Manager



**CHRIS THOMERSON**  
Engineering Manager



**DIANA BAUMGARTNER**  
Finance Dept. Manager

## CUSTOMER SERVICE

**503/367-6121**

White's Electronics has always recognized the importance of the customer, whether it is a Distributor, Dealer or the end consumer. In fact, we see all our customers as a part of White's family and tradition. As a result, the Customer Service Department is designed to provide a more total service to our customers.

Ron Siodla can be reached (8 to 5 Pacific Standard Time) at 503/367-6121, and will be happy to answer your questions and respond to any other matters concerning the White's range of products and services.



**RON SIODLA**  
Customer Service



## White's expands to Europe

### Inverness Scotland

White's Electronic's is pleased to announce the purchase of the assets of SAVO Electronics, Ltd., located in Inverness, Scotland.

SAVO was licensed by White's in 1976 to use the company's trademarks, patents and manufacturing processes to produce mineral/metal detectors. White's also provided SAVO with materials and technology.

White's will be shipping some models from Sweet Home to Scotland until their production is geared to handle the new models.

The Scotland firm will have any necessary equipment installed to keep the instruments highly competitive in the European market. We expect to incorporate both the American and European engineering technology to produce the finest instruments in the industry, as well as the best service.





**White's Tradition of  
Quality and  
Performance Starts Here.**

White's cannot overstress the importance of quality in their products. As you notice in these photos, each step of the production of White's Mineral/Metal Detectors is closely followed through with experienced technicians, to make sure the product reaches the customer with confidence of quality built instruments. Nearly all circuits used in White's instruments are patented or Patent Pending. This assures you of getting an up to date and most advanced instrument.

# “DEPTH READING”

PATENT PENDING

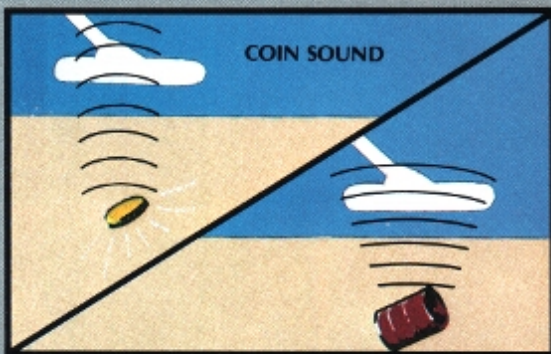


## NOW YOU CAN ACTUALLY READ ON THE METER HOW DEEP A COIN IS . . .

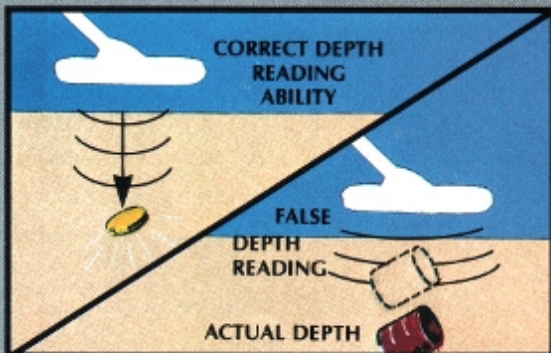
How many times have you dug a deep hole and then found that the coin was only 2" or 3" deep but you were off to the side when you pinpointed?

How many times have you scratched a valuable coin because you didn't know how deep to probe?

With all other detectors we know of, the meter pegs "FULL SCALE" on most finds and it makes it difficult to pinpoint with the meter. The new 6000/D SERIES 2 allows pinpointing with the meter on most finds.



An experienced Treasure Hunter can usually tell by the "SIZE OF THE SOUND" whether the reading is probably a coin or not.



If the reading is a coin, the operator can pinpoint the location by using the meter and/or sound and THEN READ THE DEPTH ON THE METER with exceptional accuracy!

A coin will only "Sound Off" over a small sweep area, while a tin can will "Sound Off" over a large sweep area.

Objects that are not coin sized will not read the correct depth since the meter is calibrated for coin sized objects (pennies to half dollars).

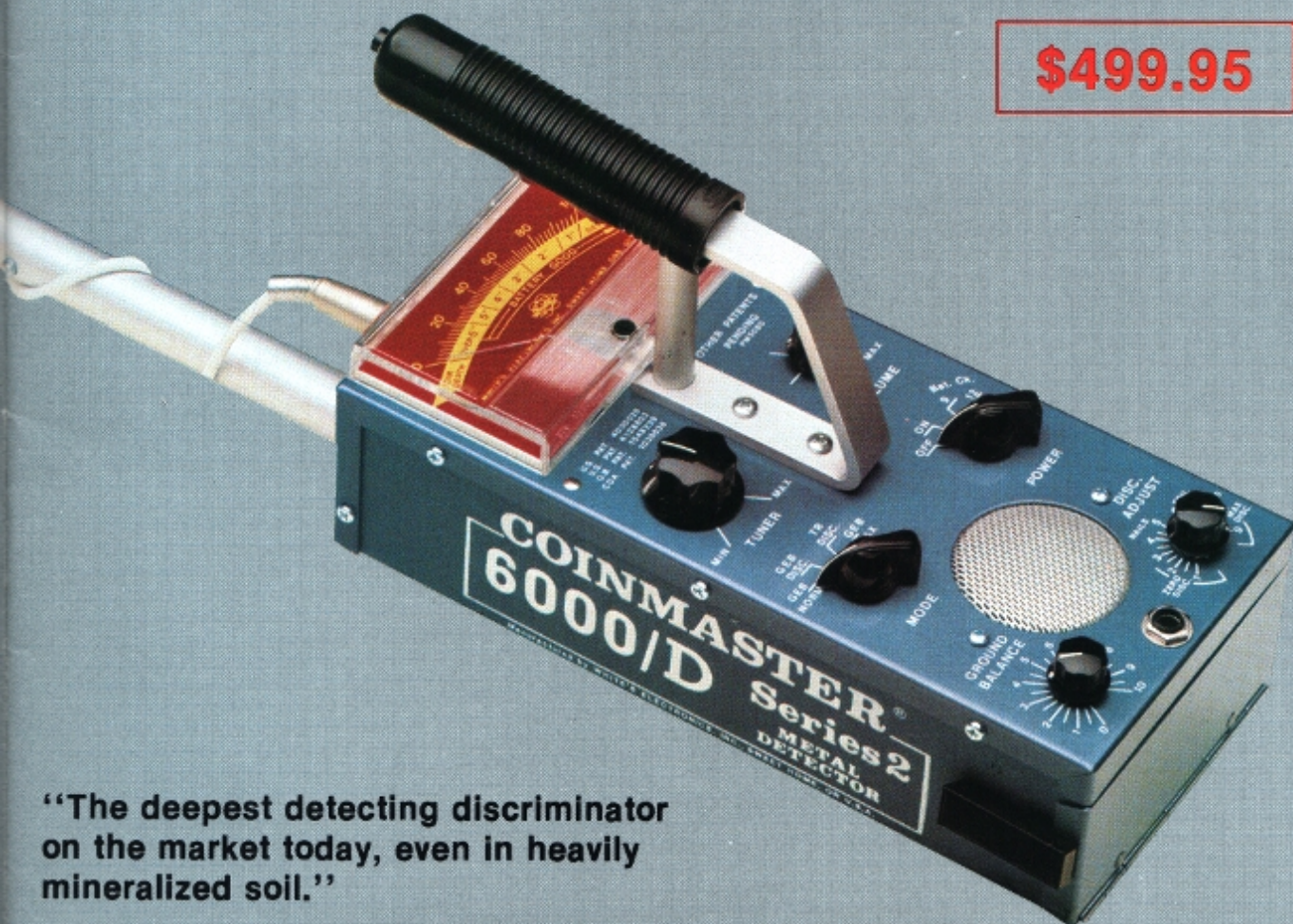
## Our customers say the 6000/D Series 2 is . . .

# COINMASTER<sup>®</sup> 6000/D

## SERIES 2

AND . . . DISCRIMINATE AS DEEP AS  
YOU DETECT ON G.E.B.

**\$499.95**



“The deepest detecting discriminator  
on the market today, even in heavily  
mineralized soil.”

U.S. PATENT #40300026 CANADIAN PATENT #1038036  
(Other Patents Pending)

Now for the first time a detector that reads the depth of a single coin!  
(Patent Pending)

- Expanded meter with a 2 1/2" Battery Test scale for maximum accuracy.
- 4 1/2" Signal Intensity Meter

## COIN DEPTH METER

- Meter is independent of the tuner setting and only reads when the object is detected!



- Crystal controlled operating frequency (6590 Hz ± 1 Hz)
- Improved slower sweep rate with greater depth in G.E.B. DISC.
- Lighter weight
- Improved reliability and sensitivity
- Improved stability and back reading capability over the conventional 4B type loop



### A TRUE ZERO DISCRIMINATION

- New improved expanded DISCRIMINATE RANGE beyond ZERO DISCRIMINATE

- Improved sensitivity on hard to detect nickels and rings while discriminating.

### NEW IMPROVED MODE SELECTION

- G.E.B. DISC. requires slower loop sweep rate with greater detection.
- No need to switch MODES for pinpointing in G.E.B. DISC. MODE. THE METER AUTOMATICALLY READS THE DEPTH OF A COIN IN ALL MODES!
- Smoother operation of G.E.B. MAXIMUM MODE with improved depth in G.E.B. MAX.



# THE 6000/D SERIES 2

**A DETECTOR WITH "DEPTH READING" AND DEEPER DETECTION THAN EVER BEFORE!!!**

**REJECTS THE GROUND WHILE DISCRIMINATING AGAINST JUNK!!!**

- Solid state with integrated analog circuitry
- 8" wide scan waterproof search head
- Adjustable Tuner
- Mode switch with G.E.B., G.E.B./DISC., TR/DISC. and G.E.B. MAX.
- Ground Balance Control for use in the G.E.B. and G.E.B. MAX modes
- Variable Discriminate Control with zero discrimination for use in the G.E.B./DISC and TR/DISC modes
- Off/On battery check switch
- Volume control
- Built-in speaker
- 1/4" headphone jack
- Easy access battery compartment
- Push button tuning
- Push button mode change for use in the G.E.B., G.E.B. MAX and G.E.B./DISC modes
- 4" easy view meter shows coin depth and battery charge
- Removable loop and rod for easy storage
- Swivel loop is easily adjusted for angle of search
- Rechargeable batteries come standard

For the past two years customers have been saying "You'll never be able to produce a better instrument than the COINMASTER 6000/D." Well, perhaps not, but we think while the sensational COINMASTER 6000/D has been the finest instrument ever produced, we have made our finest even better yet, with our new SERIES 2!





# COINMASTER® 5000/D

## GROUND EXCLUSION BALANCE FOR INCREASED DEPTH DETECTION REGARDLESS OF THE SOIL CONDITION

This Instrument is extremely popular because of its fantastic price AND detection capabilities. The 5000/D not only has all of the features of our finest TR discriminator, it also has some of the advantages of the more advanced G.E.B. instruments. Soil conditions won't hamper your hunting technique in the G.E.B. mode, nor will it allow confusing signals to disguise the detection of valuable items. And the TR mode gives you the benefits of variable discrimination for use in qualifying your G.E.B. finds, or for prospecting purposes. The combined results make this one exciting detector!



## A SUPERIOR INSTRUMENT

WITH TR DISCRIMINATOR AND GROUND EXCLUSION BALANCE FOR INCREASED DEPTH DETECTION REGARDLESS OF THE SOIL CONDITION

- Adjustable tuner
- Off-on switch with Battery Check, G.E.B. and TR/DISC.
- Ground balance control for use in the G.E.B. mode
- Sensitivity control for use in the TR/DISC. mode while searching in mineralized ground
- Volume control
- Variable discriminate control
- Built in speaker
- ¼" headphone jack
- Easy access battery compartment
- Push button tuning
- 3" easy view meter shows signal intensity and battery charge
- Removable loop and rod for easy storage
- Swivel loop is easily adjusted for angle of search
- Weight: 4 lbs. 8 oz.



**\$269.95**

U.S. PATENT #4030026  
CANADIAN PATENT #1038036



# COINMASTER® 6/DB

THE FINEST INSTRUMENT,  
THE GREATEST FEATURES,  
AND  
THE BEST PERFORMANCE  
WE HAVE EVER PRODUCED  
IN THIS PRICE RANGE



REJECTS THE GROUND WHILE  
DISCRIMINATING AGAINST  
JUNK!

Compare the 6/DB to other brands and you'll find that the tougher the ground condition, the more the 6/DB stands out against the competition.

- White's! The originator of G.E.B., V.L.F., and ground rejection instruments!
- 8" ultra wide scan search loop
- Adjustable tuner
- Push button mode change for use in the G.E.B. and G.E.B./DISC. mode
- Mode switch with G.E.B., G.E.B./DISC., and TR/DISC.
- Ground balance control for use in the G.E.B. mode
- Variable discriminate control for use the the G.E.B./DISC. and TR/DISC. modes
- Off-On battery check switch
- Volume control
- Built in speaker
- ¼" headphone jack
- Easy access battery compartment
- 3" easy view meter shows signal intensity and battery charge
- 9 and 12 volt rechargeable batteries and charger
- Sturdy anodized adjustable rod
- Swivel loop is easily adjusted for angle of search
- Removable loop and rod for easy storage



**\$369.95**

U.S.PATENT #4030026, #128803  
CANADIAN PATENT #1038036

# COINMASTER® 6/DB HIPMOUNT

**Exceptionally maneuverable -**

Get all the features of the standard 6/DB plus the versatility of a hip or chestmounted instrument with White's 6/DB Hipmount. Great for overhead search, over walls of old buildings nine feet high, brushy areas, checking outcroppings when prospecting, and searching in water five feet deep.



Many customers use a detector for long hours of continuous use and need an exceptionally lightweight unit, but still powerful enough for excellent performance at the greatest depths. In searching, the operator can actually sweep a full six foot area, which is one foot more than a standard hand held model.

The 6/DB is lighter with little notice of it being at your side except when it sounds off when detecting a find. The probe which connects to the unit is so maneuverable, it will be exceptionally effective at treasure hunts, prospecting and coinshooting. All other features are identical to the COINMASTER 6/DB.

The operator carries just the 35 oz. 8" waterproof loop with one hand, leaving the other free. The rod is adjustable from 39" to 44" in length.



**\$399.95**

Weight of Case: 2 lbs. 12 oz.  
Weight of Probe: 2 lbs. 3 oz.

U.S. PATENT #4030026, #4128803  
CANADIAN PATENT #1038036



# COINMASTER® 4/DB

THE MOST POPULAR TR DISCRIMINATOR WE'VE  
EVER BUILT, IS BETTER THAN EVER.  
THE FAMOUS COINMASTER 4/D IMPROVED,  
WITH A SUPER SENSITIVE CIRCUIT.

**PUSH BUTTON TUNING**

Performs the operations of  
three instruments in one:

1. A regular TR detector for non-magnetic metals, gold and silver coins, rings and nuggets.
2. A TR Discriminator to reject junk.
3. A magnetic (iron) detector for magnetic metals - guns, knives, magnetic ore bodies.

- 8" waterproof loop for increased depth
- Adjustable tuner
- Push button tuning
- Mode switch with MINERAL, METAL, TR/DISC., and BAT CHECK
- Variable discriminate control for use in the TR/DISC. MODE
- Sensitivity control
- Off-On volume control
- Built in speaker
- ¼" headphone jack
- 3" easy view meter shows signal intensity and battery charge
- Easy access battery compartment
- Swivel loop is easily adjusted for angle of search
- Sturdy forward handle
- Low profile rugged metal case with enamel finish
- Weight: 4 lbs. 9 oz. Specially balanced for ease of operation
- Removable loop and rod for easy storage



**\$199.95**

U.S. PATENT #4024468



# COINMASTER® 2/DB

## NEW • SERIES 2

WITH A NEW AND IMPROVED  
TR DISCRIMINATOR

PUSH BUTTON TUNING



Increased sensitivity and depth capability combined with mineralized ground cancellation or discrimination makes this metal detector the most exceptional for the lowest price on the market!

- Signal intensity meter
- Push button tuning
- Adjustable tuner
- Variable discriminate control with a wider range to cancel ground mineralization or discriminate against junk items such as bottle caps, pull tabs, and more.
- Off-on volume control
- Sensitivity control
- Built in speaker
- ¼" headphone jack
- Easy access battery compartment
- Low voltage battery indicator
- Removable loop and rod for easy storage
- Swivel loop is easily adjusted for angle of search
- New 8" waterproof wide scan loop
- Uses low cost 9 volt battery
- Forward handle for exceptional balance
- Weight: 3 lbs. 6 oz.

**\$169.95**

U.S. PATENT #4030026  
CANADIAN PATENT #1038036



# COINMASTER<sup>®</sup> 1/DB

## NEW • SERIES 2

**NEW AND IMPROVED DISCRIMINATOR  
EASY TO USE  
SEPARATES COINS FROM JUNK**



### **WHITE'S LOWEST PRICED PUSH BUTTON DISCRIMINATOR!**

Now, have the advantages of an inexpensive metal detector without giving up features that help to locate treasure. This TR has expanded capabilities and efficiency, including circuitry that allows you to tune the instrument precisely for the area in which you search. And that means better results!

- Push button tuning
- Adjustable tuner
- Variable discriminate control with a wider range to cancel ground mineralization, or discriminate against junk items such as bottle caps, pull tabs, and more
- New 8" waterproof wide scan loop
- Off-on volume control
- Built in speaker
- ¼" headphone jack
- Easy access battery compartment
- Low voltage battery indicator
- Removable loop and rod for easy storage
- Only one 9 volt miniature low cost battery needed
- Swivel loop is easily adjusted for angle of search
- Weight: 3 lbs.



**\$129.95**

U.S. PATENT #4030026  
CANADIAN PATENT #1038036



# COINMASTER®

# TR

A.G.C.\*



**\* AUTOMATIC GROUND  
CANCELLATION!  
ONE SINGLE CONTROL  
DOES IT ALL!  
AT WHITE'S LOWEST PRICE  
YOU FIND EVERYTHING!**

**FEATHERWEIGHT  
ONLY 43 oz.**

COMPLETE WITH BATTERY

Detects both ferrous and non-ferrous metals automatically on the same setting, so nothing is missed or left to chance with no extra tuning controls.

Fantastic for treasure hunts because the entire loop is sensitive. You have the full 6 inches searching for you, instead of just a small "hot spot" as on other TR loops!

- Easy operation with just one control
- Adjustable tuner with off-on switch
- Built in speaker
- Hinged battery compartment door with locking latches
- 6" waterproof loop
- A.G.C. circuit automatically cancels most ground mineralization
- Powered by a single low cost 9 volt battery
- Swivel loop is easily adjusted for angle of search



**\$59.95**

**\*(AUTOMATIC GROUND CANCELLING)  
PATENT PENDING**

# TREASUREMASTER AMPHIBIAN

6" Loop - Lightweight and Non-Buoyant.

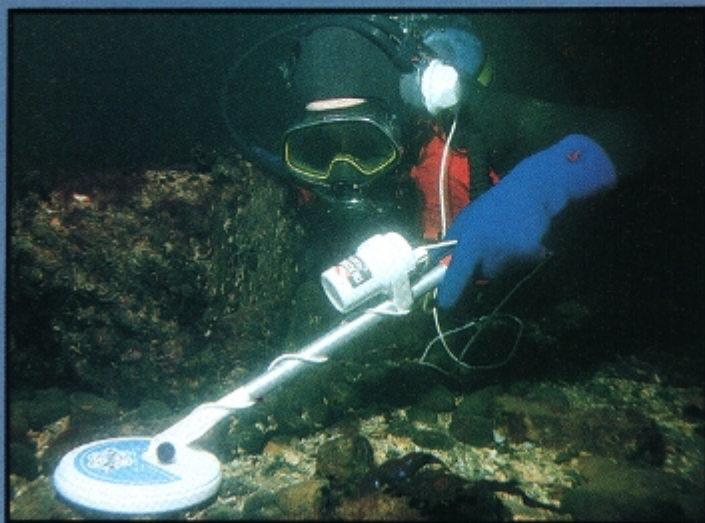
Redesigned control cylinder, plastic corrosive proof and waterproof: improved battery access: powered by one 9 volt battery.

Improved circuitry allows detection of all metals, ferric and non-ferric, and a single one turn control.

Designed with semi-ground rejection capabilities for improved detection depth.

**OUTSTANDING  
DISCOVERIES  
AWAIT YOU!**

This fantastic instrument can be used in salt and fresh water, for those TH'ers who don't want to miss the treasure beneath the waves! Reactions are transmitted through an attached cord to a waterproof, and dust-proof, speaker in a headphone set-up. This headphone comfortably and easily adjusts to fit over a hood, mask, or whatever else the diver is wearing. It's lightweight - only 34 oz. and very accurate!



**\$199.95**

---

# SURFMASTER

This unit is also completely waterproof and dustproof, with a single one turn control. But, it was designed for hunting in the surf and shallow waters up to 5' deep. It can be used in either salt or fresh water, especially where swimmers abound. Rings and coins will often be found in these areas due to the shrinking quality of skin after prolonged water contact. The forearm support makes this instrument easy to use, and it's lightweight, only 48 oz., will allow you to hunt for hours in comfort. If your specialty is off-shore treasure hunting, this is the special instrument for you.



**\$199.95**

**ALL OF THE  
FEATURES OF THE  
TREASUREMASTER  
AMPHIBIAN  
REDESIGNED FOR  
SHORELINE  
HUNTING!**





### HEADPHONE

You will find a set of headphones a great asset. They plug into the jack which is built into almost all White's instruments. Gives you privacy, and keeps out distracting external noise. Customers agree headphones increase their detection depth on deeper objects, which are almost beyond the instrument's detection range. Headphones \$14.95



### 15" LOOP

White's new 15" loop is purposely designed to detect larger objects deeper than normal 6" and 8" loops can reach. Detection of depth is as deep as 4 feet, possibly more, depending on the size of the object. Attach to the standard rod of your instrument, or use it with the Hipmount. Available for the 5000/D, 6/DB, 4/DB, 6000/D, and all Series 2 units. Check with your dealer for the proper loop. \$99.50



### GOLD PAN

White's offers prospecting equipment to supplement your detector. Sturdy Plastic goldpans come in several sizes and are black to allow you to see the gold flakes easier.

Small 10" 4 oz. \$2.95  
Med. 15" 1 lb. 2 oz. \$5.95  
Large 17" 14 oz. \$5.95



### LOOP COVERS

Protect your loop from scrapes, with White's molded Loop Covers. Fits 8" loops only. \$3.95 each.



### INSTRUCTION TAPE

This enhanced instruction tape is designed to give you operational tips with the aid of sound effects. It covers models with 10 turn control tuning as well as those with push-button tuning. Other features included are air testing, discrimination in both the G.E.B. and TR modes, mineralization, pinpointing, and much more. Price \$4.95



### THE PROSPECTOR

This all purpose cup is made of tough stainless steel. The handle doubles as a hook for carrying on your belt. You'll find this cup very handy when you're in those way out of the way places. Price \$3.95



### BELT BUCKLES

Some of White's accessories are for you rather than for your detector. Treat yourself to a handsome solid brass buckle, tooled with the White's emblem. It fits most wide belts. \$7.95 each.



### CARRYING CASES

For owners who like to keep their possessions "LIKE NEW!" These beautiful and durable Royalite Custom made cases will protect your detector from everyday bumps and scratches. Precision Die-Cut, protective foam is used to "nest" your instrument when shipping or storing. It's ideal for traveling. Carrying Cases Price: \$29.50

### RECHARGEABLE BATTERIES AND CHARGER

Under normal use the system will last up to approximately 7 years. The batteries may be recharged up to 1000 times. Rechargeable batteries and charger save many dollars. (12 volt rechargeable system for the COINMASTER 4/DB and 5000/D \$38.25); (9 and 12 volt rechargeable system for the COINMASTER 6/DB, 6/DBH and 6000/D \$60.25)



The above replacement battery packs cannot be used with the COINMASTER 6000/D SERIES 2. Replacement battery packs for this instrument are available upon request.

### 9 VOLT RECHARGEABLE SYSTEM

White's new single 9 volt rechargeable system is for most detectors that use the 9 volt #216 battery. This includes White's COINMASTER TR, COINMASTER 1/DB, COINMASTER 2/DB, TREASUREMASTER Amphibian and Surfmaster. Only \$18.95



### CONVERSION KIT

Now most of White's instruments may be converted into Hipmounts! There are four different Kits available to accommodate the different types of PLUGS. Check with your dealer for the proper Kit. Shipping weight is less than two pounds. Just \$29.95.



### PROTECT YOUR WHITE'S METAL DETECTOR WITH A VINYL INSTRUMENT BAG

These high quality vinyl instrument bags have been custom designed to carry the current line of White's metal detectors. The bags are fitted with a full length zipper for easy access and weigh only 32 oz. Two colors are available (Black and Blue) \$19.95



### QUALITY WIND-BREAKERS AND JACKETS

Metal detecting is likely to take you where you'll need a windbreaker or an even warmer jacket. White's offers both! Each comes in children's and adults' sizes, so you can outfit the whole family. Choose the unlined style, or one of the cozy quilted lining style.

Quilted jackets: \$24.95  
Windbreakers: \$15.95

# HOW TO CHOOSE YOUR DETECTOR!



Before you buy a metal detector, the following things should be considered:

1. Should I buy from an established company so I can be sure of getting my instrument serviced in the future? (Will the company still be around?)
2. What are my wants and needs? Or in other words - What type of Metal Detecting do I want to do?

No detector is best for all wants and needs. People buy Cadillacs for different reasons than "Gas Mileage," while others buy Volkswagens for reasons other than "Luxury."

The following is provided to help you understand the features of the "COINMASTER" Detectors, and how they fit different wants and needs:

## OUR COINMASTERS CAN BE PLACED IN THREE CATEGORIES:

- |           |                       |
|-----------|-----------------------|
| 1. GOOD   | (\$ 59.95 - \$169.95) |
| 2. BETTER | (\$199.95 - \$269.95) |
| 3. BEST   | (\$369.95 - \$499.95) |

ALL ARE SUPERIOR IN THEIR OWN PRICE RANGE.

### GOOD

The "GOOD" detectors (CMTR, CM1/DB Series 2 & CM2/DB Series 2) have been designed with the "first time buyer" in mind. Low initial investments with good high quality results.

**A. COINMASTER TR with \*(A.G.C.) (\$59.95):** This detector is the lowest priced detector we've ever offered! One of the most important features on this detector is the \*(A.G.C.) circuit, \*(Automatic Ground Canceling) that keeps the ground from giving "false signals" to the novice operator.

The \*(A.G.C.) TR is the simplest, newest and easiest instrument to operate over mineralized

ground as well as the lowest priced. It makes a very good unit for those "speed" events at treasure hunts. This detector finds ALL METALS with ease. Guns, knives, etc. that would be missed with a discriminator as well as with coins, rings, gold, copper, and silver.

**B. COINMASTER 1/DB SERIES 2 (\$129.95):** White's lowest cost push-button discriminator has been redesigned with more features and greater performance than ever before. The push-button has been moved to the handle, plus a tuner control has been added for more precise tuning. A new expanded range discrimination control allows you to cancel mineralized soil or use as a standard TR discriminator. An L.E.D. lights automatically to indicate a low battery. Imagine, a low cost discriminator that does it all - cancels the ground or eliminates junk such as tin foil, pull tabs and bottle caps.

**C. COINMASTER 2/DB SERIES 2 (\$169.95):** The 2/DB Series 2 has all the great features of the 1/DB Series 2, plus the addition of a sensitive signal intensity meter. Also, a sensitivity control has been added to give you even greater search capability.

Both the 1/DB Series 2 and 2/DB Series 2 now have 8" loops for better depth and greater coverage.

### BETTER

The "BETTER" detectors (CM 4/DB and CM 5000/D) have been designed for customers who want a better than average metal detector.

**A. COINMASTER 4/DB (\$199.95):** This detector allows the operator to choose from three different types of searching techniques, (or modes of operation).

1. METAL - In this mode you are using a fixed amount of discrimination and will find **all** coins and **some** bad objects such as pull tabs.
2. DISCRIMINATE - In this mode you are able to adjust the amount of discrimination to reject additional bad objects such as pull tabs.
3. MINERAL - This mode will locate only objects that contain iron, such as guns, knives, etc., and will not detect non-iron (non-ferrous) metals such as coins, aluminum, etc. This mode is not found on very many detectors. In addition to these three modes on the COINMASTER 4/DB, you also have a sensitivity control to compensate for changing ground mineralization and an 8" loop which covers more ground while searching, than with a 6" loop and also has more depth on the larger coins and bigger objects. The mineral setting is very important for the prospector, as the instrument will then detect magnetic veins and ore bodies that may have a capping of magnetic iron over them, and this is what the prospector is looking for!

**B. COINMASTER 5000/D (\$269.95):** This detector has long been a popular model. It basically has the

discriminate capabilities of the CM 4/DB plus an ALL METAL (G.E.B.) Mode that can be adjusted to "BALANCE OUT" the mineralization of the ground so you can get the same depth in the ground as you do in the air. The depth available on a detector without a G.E.B. (Ground Exclusion Balance) ALL METAL Mode is mainly determined by the amount of **mineral in the soil** you are searching in. Which means in some areas you might be able to only penetrate 2" for most newer coins and 4" to 6" on older coins. While in other areas you may go 2" to 4" **deeper!** BUT with the G.E.B. ALL METAL Mode you get MAXIMUM depth all the time regardless of the soil condition! Also, the 5000/D comes standard with rechargeable batteries! A real money saver!

## BEST

The "BEST" Detectors (CM 6/DB, CM 6/DB HIP-MOUNT and CM 6000/D SERIES 2) were designed for the customer who wants the BEST Metal detectors available.

**A. COINMASTER 6/DB** (\$369.95), **COINMASTER 6/DB HIPMOUNT** (\$399.95): It has many features of the 6000/D.

**B. COINMASTER 6000/D SERIES 2** (\$499.95): We feel the 6000/D was the best detector on the market! The main reason for its popularity was its ability to discriminate the DEEPEST POSSIBLE DEPTH available today! Also, the loop DID NOT HAVE TO BE HELD AT A CONSTANT HEIGHT! You could hunt in the G.E.B. Normal mode and locate ALL METALS, or you could hunt in the G.E.B. Discriminate mode and rule out selected junk metals. This detector was the BEST COIN-SHOOTING detector we've ever built and that we've ever seen!

We now PROUDLY INTRODUCE the 6000/D SERIES 2 with Depth Reading - the BEST is now EVEN BETTER. Super features like crystal controlled operating frequency, slower G.E.B. Discriminator sweep with greater depth, zero discrimination for prospecting, and - FOR THE FIRST TIME EVER - Depth Reading on coins.

The 6000/D SERIES 2 is the BEST ALL AROUND detector built, and now it can even tell you how deep the coin is buried, up to six inches - just look at the depth meter for a direct reading.



## THERE ARE 8 BASIC TYPES OF METAL DETECTORS:

**1. BFO METAL/MINERAL** - We don't feel this type of detector offers any advantage over the TR types AND we feel it has a definite disadvantage of not be-

ing as sensitive as the TR. The stability of these BFO types of units is usually below average and stability is very important. BFO stands for Beat Frequency Oscillator. Metal-Mineral means it can discriminate or tell the difference between two types of metals: 1) Non-Ferrous Metals, or 2) Ferrous Metals, (Mineral). We do not produce BFO units for the negative reasons stated above. We discontinued these years ago and so have most all other manufacturers.

**2. BFO DISCRIMINATOR** - Same as above only with the slight possibility of more selective discrimination.

**3. TR ALL METAL** - A Transmit-Receive detector that generally is regarded as more sensitive and more stable than a BFO. ALL METAL means it has the ability to detect ALL METALS, (Ferrous and Non-Ferrous) at the same time. The difference between a TR ALL METAL detector and a G.E.B. ALL METAL detector is the TR unit does not have a ground balance circuit so depth of detection is reduced over mineralized soil.

**4. TR METAL/MINERAL** - A Transmit-Receive detector that can discriminate between Ferrous and Non-Ferrous metals. The advantages of this detector are 1) Ability to discriminate between Ferrous and Non-Ferrous, 2) Good stability, 3) Low Cost. The disadvantages are: 1) The ground soil condition can cause false readings and loss of depth.

**5. TR DISCRIMINATOR** - Same as TR METAL/MINERAL except it has the capability of more selective discrimination.

**6. G.E.B. ALL METAL** - A Transmit-Receive detector that detects both Ferrous and Non-Ferrous Metals at the same time and has a ground circuit and ground control that can adjust out the effects of different soil conditions to allow for MAXIMUM depth and no false readings from the ground. It is exceptionally easy to use with no ground interference. The only disadvantage with this detector is that it cannot discriminate while the ground is adjusted out.

**7. G.E.B. or TR DISCRIMINATE** - A Transmit-Receive detector with dual circuits that gives you at least two detectors in one; YOU HAVE THE DEEPEST DETECTION IN THE G.E.B. POSITION AND A TR-DISCRIMINATOR IN THE TR DISC. POSITION AT THE TURN OF A SWITCH, ALL IN THE SAME INSTRUMENT! Its only real disadvantage is that it cannot be both types at the same time.

**8. G.E.B. DISCRIMINATORS** - A Transmit-Receive detector that can be a G.E.B. and a G.E.B. DISCRIMINATOR, both at the same time! It will achieve MAXIMUM depth WHILE discriminating and has the capability of four different detectors. Like having four detectors in one.

1. A regular G.E.B.
2. A G.E.B. Discriminator.
3. A regular TR Discriminator.
4. An ultra super sensitive G.E.B. for even greater depth of detection.

# A WORD ON DEPTH

## HOW DEEP WILL IT DETECT?

There are many factors that determine how deep a metal detector will detect an object. Let's look at some:

### 1. SIZE OF THE OBJECT:

Generally speaking, the larger the metal object the deeper it can be detected. A cache of coins can be detected deeper than a single coin.

### 2. SIZE OF THE LOOP:

A 15" loop will give about a 30% increase in depth over that of an 8" loop. Small loops give less depth, but respond better to a very small object (such as a tiny gold nugget) than do the larger loops.

### 3. LENGTH OF TIME BURIED:

The longer an object has been buried, the better you will be able to detect it. A chemical reaction causes a "halo" to develop around the object. This "halo effect" makes the object appear bigger to the detector, thus increasing the depth at which it can be detected.

### 4. THE TYPE OF METAL:

Different metals have different conductive properties that can affect the depth at which they can be detected.

### 5. MINERALIZATION:

Most soil has some degree of mineralization in it. If your detector is equipped to cancel the ground, mineralization will have little effect on depth. However, if the detector is of the type that does not cancel mineralization or is used in a mode that does not cancel mineralization, then a high amount of mineralization will greatly reduce the depth at which objects can be detected.

### 6. SKILL OF THE OPERATOR:

Even the very best metal detector will give poor results if operated incorrectly. As you become more experienced with your detector, you will find that you get better results in depth.

As you can see, there are many factors affecting depth of detection. It would be incorrect for anyone to say that a metal detector can reach a certain depth under all conditions.

White's Electronics, Inc., as a leader in the field, is well aware of the claims made by others. You can be assured that top performance, through state-of-the-art technology, is designed into all of our instruments.

# WHERE TO COINSHOOT

1. Playground	2
2. Campgrounds	3
3. Picnic Areas	3
4. Public Parks	2
5. Amusement Parks	1
6. Circus Grounds	1
7. Fairgrounds	1
8. Carnival Grounds	1
9. Exposition Sites	1
10. Revival Grounds	2
11. Football Fields	1
12. Baseball Fields	2
13. Soccer Fields	1
14. Polo Grounds	2
15. Badminton Courts	4
16. Volleyball Courts	4
17. Around Old Churches	1
18. Around Old Schools	1
19. Old Houses	2
20. Under Porches of Old Houses	2
21. Old Train & Bus Stations	2
22. Along Sidewalks	4
23. Ghost Towns	2
24. Foundations of Old Buildings	2
25. Under Old Floors of "Outhouses"	1
26. Beaches	1
27. Beach Concession Stands	1
28. Grassy Area Above Beach	1
29. Under Boardwalks	1
30. Around Swimming Pools	1
31. Shallow Water - Swimming Area	2
32. Banks of Fishing Lakes	2
33. Under Fire Lookout Towers	2
34. Old Fence Post Holes	1
35. Around Parking Meters	1
36. Parking Lots	3
37. Under Bleachers	2
38. Auction Sites	2
39. Old Cemeteries	2
40. Outdoor Markets	2
41. Old Stage Coach Stops	2
42. Old Army Campsites	2
43. Old Gypsy Campsites	2
44. Battlefields	3
45. Under Large Trees	2
46. Demonstration Sites	2
47. Drive-In Theatres	3
48. Race Tracks	2
49. Horse Rings	2
50. Around Old Mailboxes	2

The areas where you can successfully coinshoot are only limited by your own imagination and research. More money has been lost than been found. A heavy screwdriver or similar device is all that is needed for most coinshooting, and leaves no holes. If necessary to dig, ALWAYS neatly cover the holes. This is the first and most important responsibility of anyone who detects, no matter where it is done.

*RATING GUIDE	
1. - Excellent	3. - Good, but pull tab & bottle cap area.
2. - Good	4. - Average



# DATA CHART

## METAL DETECTOR DATA SHEET FOR

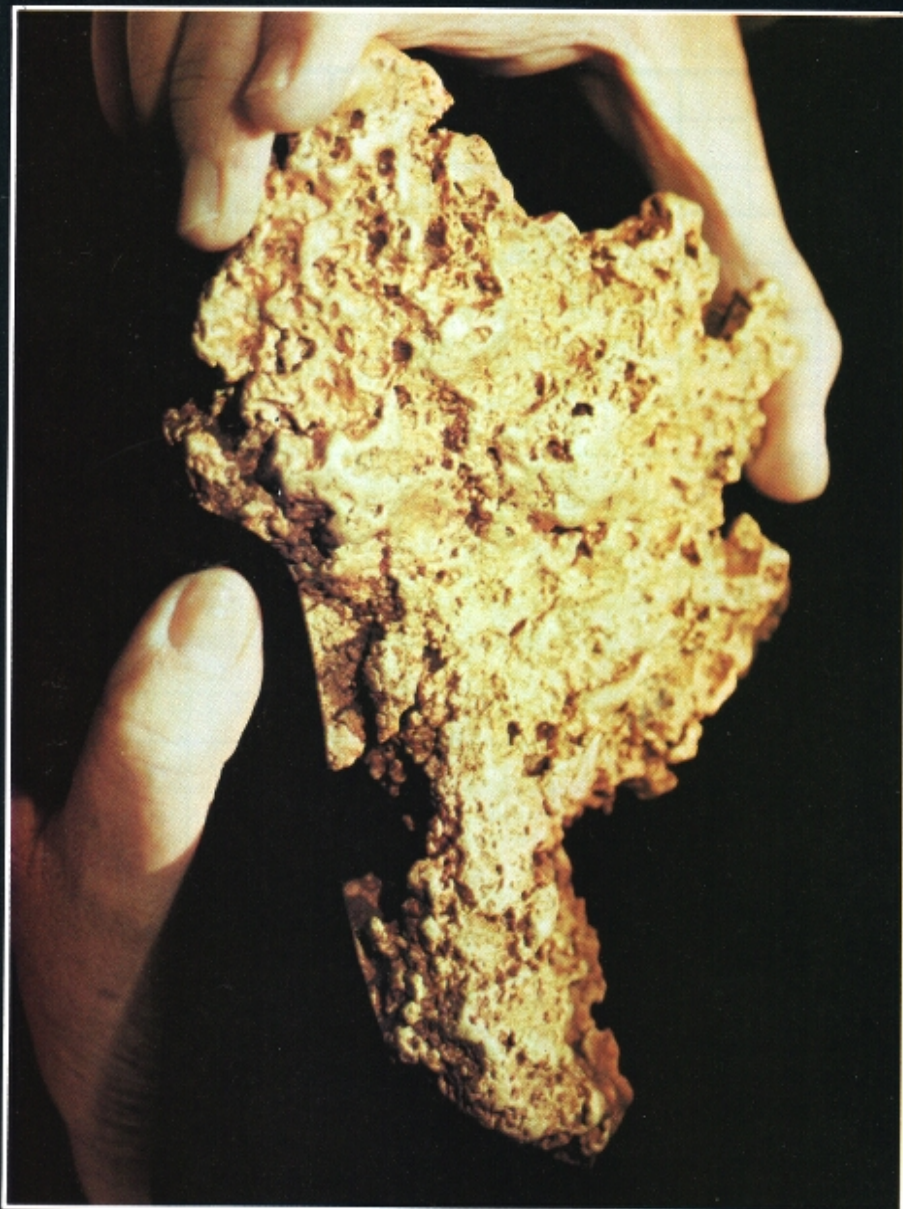
### WHITE'S ELECTRONICS, INC.'S CURRENT MODELS

SPECIFICATIONS & FEATURES DETECTORS	Oper. Freq. (KHz)	Weight	Loop Size	Waterproof Loop	Completely Submersible	9 Volt Trans. Battery	9 Volt Pack (6 Pentiles)	12 Volt Pack (8 Pentiles)	Rechargeable Batteries Standard	G.E.B. NORM	G.E.B. MAX	G.E.B. DISC.	TR DISC.	Mineral Mode	A.G.C.	Depth Reading	Push Button Tuning	Push Button Mode Change	Meter	Variable Disc. Control	Ground Balance Control	Sensitivity Control	Volume Control	Mode Select Switch	Battery Check	Earphone Jack		
6000/D SERIES 2 \$499.95	6.59 (1)	4 lbs. 5 oz.	8"	YES	NO	X	X	X	YES	YES	YES	YES	YES			YES	YES	YES	YES	YES	YES	YES	YES	YES	YES	YES	YES	
6/DB HIPMOUNT \$399.95	6.59	5 lb.	8"	YES	NO	X	X	X	YES	YES		YES					YES	YES	YES	YES	YES	YES	YES	YES	YES	YES	YES	
6/DB \$369.95	6.59	4 lbs. 13 oz.	8"	YES	NO	X	X	X	YES	YES		YES					YES	YES	YES	YES	YES	YES	YES	YES	YES	YES	YES	
5000/D \$269.95	5.13	4 lbs. 8 oz.	8"	YES	NO			X	YES	YES			YES				YES	YES	YES	YES	YES	YES	YES	YES	YES	YES	YES	
4/DB \$199.95	5.13	4 lbs. 8 oz.	8"	YES	NO			X					YES	YES			YES	YES	YES	YES	YES	YES	YES	YES	YES	YES	YES	
2/DB SERIES 2 \$169.95	6.59	3 lbs. 9 oz.	8"	YES	NO	X											YES	YES	YES	YES	YES	YES	YES	YES	YES	YES	YES	
1/DB SERIES 2 \$129.95	6.59	3 lbs. 8 oz.	8"	YES	NO	X											YES	YES	YES	YES	YES	YES	YES	YES	YES	YES	YES	
COINMASTER TR \$59.95	12.5	2 lbs. 11 oz.	6"	YES	NO	X									YES													
AMPHIBIAN \$199.95	12.5	3 lbs. 4 oz.	6"	YES	(2)	X																						
SURFMASTER \$199.95	12.5	4 lbs. 8 oz.	6"	YES	(3)	X																						

TERMS:

G.E.B. - Ground Exclusion Balance  
A.G.C. - Automatic Ground Cancelling  
T.R. - Transmit/Receive

- (1) Crystal Controlled      (2) Submersible to 75 feet      (5) Extended range for ground rejection  
(3) Submersible to 5 feet      (4) Zero Discrimination Capability      Prices subject to change without notice.



## THE GOLDEN BEAUTY

The 145-ounce "GOLDEN BEAUTY" was found in Western Australia with a White's COINMASTER 5000/D Metal Detector.

Francis and John Aggiss of Perth, Western Australia, were the lucky couple that found the nugget 3 inches in the ground.

Fleetwood's Camping Store, the dealer who sold Mrs. Aggiss the 5000/D, has purchased the instrument back from her and now displays it at the store.



## OVER 103 NUGGETS

Mr. Frank Kopacka from Dunnolly, Australia, displays some of the impressive gold pieces he found with his 5000/D. He's now recommending the 5000/D to everyone he meets!

Taken from Australian Gem & Treasure magazine.

# HAND OF FAITH

'George', the anonymous finder of the \$1 million 'Hand of Faith' nugget says, "as for fossicking with a metal detector, I can recommend it as a tremendously pleasurable pastime. And provided you have patience, some knowledge of the goldfields, and a good quality detector, you will find gold.

If you dig for a signal and it disappears, spread the soil from the hole and run the detector over it. I have seen and heard of small nuggets being picked up after someone else has dug it out and left it sitting on the edge of the hole.

"Don't be disheartened by the rubbish you dig. My average is about 50 bits of rubbish a day and one nugget every two days."





## OUR MUSEUM

The Museum is located in White's Electronic's Main Office Reception Area, Sweet Home, Oregon.

In 1961, the Museum started with a small showcase. After years of accumulating treasures, the Museum today contains valuables of all sorts -artifacts and several historical items.

For example, the Museum contains: gold and silver ingots mined in southern Arizona over 260 years ago; gold nuggets, ore, jewelry and coins.

Kenneth R. White Jr. displays a large collection of old bottles found by using a White's metal detector to locate the dumpsites.

There is a collection of artifacts gathered throughout the Florida and Caribbean waters.

Visitors are always welcome to come and browse during our office hours.



# TAMIRON



## White's 57 Foot Research Vessel

The "TAMIRON" was built in Tarpon Springs, Florida in 1972. She is now moored in North Miami Beach. The "TAMIRON" is powered by a single 871 GM deisel, can carry 1700 gallons of fuel and 700 gallons of fresh water. She is fully equipped with the latest electronic navigation, communication and depth sounding equipment.

Skipped by Kenneth R. White Jr., "TAMIRON" cruises the Caribbean waters conducting test and research on White's instruments, and searching for lost treasure.

The "TAMIRON" and crew have been invited on wreck locations to aid in the recovery and salvage of treasure from vessels such as the Spanish Galleon, Maravillas, lost at sea January 4, 1656.



*Larry L. Johnson*

Larry's finds have come from 4 states; Illinois, Idaho, New Mexico, and Oregon.

The finds include two wire-snap capped beer bottles from Illinois that date back to the 1800s. There is only one other beer bottle like this known to be in existence. He also found a Chinese 10 Cash coin in Oregon dated around early 1800's, several Indian Head Pennies and Liberty Nickels.

Larry treasure hunts with a 6/DB Hipmount.



*James M. Collum*

Jim McCollum is a new authorized White's Dealer in the Sweet Home area, planning to relocate in La Grande, Oregon.

Jim has been an active member and President of Beaver State Coinshooter's Club. Jim and his wife Betty, have found many valuables, including a \$5 dollar gold piece, a ladies wedding set with a large solitaire diamond, an assortment of coins and pieces of jewelry. Jim and Betty use a wide variety of White's instruments. Ninety per cent of Jim's finds have been found in Oregon, within the Willamette Valley.



*Gib Thompson*

professional coinshooter/treasure hunter, is shown here displaying his large trophy collection, won by using White's metal detectors in competition. Gib received his most recent trophy taking 2nd place at the Pro Run-Off Treasure Hunt held February 21-22, 1981, in Old Vegas, Nevada.

Gib's finds include collections of toy pistols and rifles, dated back to the late 1800's, numerous coins, pieces of jewelry and a silver ingot found on the Oregon Trail.



*Jack A. Summerfield*

In June of 1979, my family and I went on a vacation to California. We had competitor instruments at the time. I was not too happy with my detector, as I couldn't keep a tone level in the TR Mode.

As we coin hunted our way across the states, we met a lot of fellow hunters. I noticed that many were White's users. I told my wife I was getting rid of my detector and buying a White's.

When I got home I contacted the Distributor for Scarborough, Canada, and became a dealer.

I now use a 6000/D; my wife has a 2/DB and my son uses the 4/DB.

Agee's treasure hunting fever began 12 years ago when curiosity prompted him to borrow a friend's metal detector to hunt his yard. "It was an old White's Electronics Goldmaster with a wooden loop.

Shortly afterwards, he bought his first detector - a White's TR63. At home in his backyard he practiced with the new machine and it wasn't long before he began finding things - three Mercury dimes, 10 old pennies, a watch and several J. O'Harnet trade tokens.

Both Agee and Jean are avid treasure hunters, now. Bill has added another White's detector to his arsenal so that Jean can do her share of the hunting when they go off on one of their frequent trips to look for coins.

Bill Agee's treasure hunting doesn't stop with coinshooting. He is also an avid 'Spanish Treasure' buff.

On a card table in the den of the Agee's home lay a large collection of finds covering the 12-year span of his interest in treasure hunting.

What does the future hold in store for Bill and Jean Agee on their coinshooting jaunts?

"We plan to be a little more scientific in our hunting from now on. We are going to do more hunting and back it up with more history reading to be better prepared."

Perhaps along with their more scientific approach and better research techniques, luck will continue to be on the side of the Agees.

If it takes confidence to find a jar of gold coins then Bill Agee has plenty. And, if Bill doesn't find that jar he will at least tell you who in his family will. I think she spells it...J-E-A-N.



## COINS





# WHAT A COINCIDENCE!

Jerry Shaffer, using a COINMASTER 6000/D, found a \$5 gold piece, 1880S, in excellent condition in a park in Sonoma County, California on October 28, 1980. His digging companion, Darlene McDonald, was hunting in a park one mile away exactly a month later on November 28, 1980, and found an identical coin, another 1880S \$5 gold piece in identical condition. *What a coincidence!* Darlene was using her COINMASTER 6/DB.



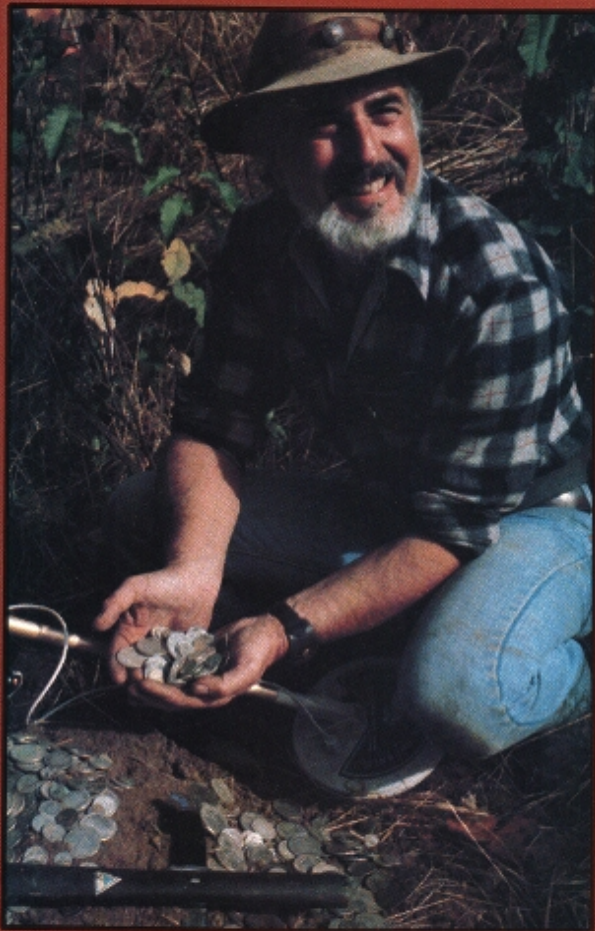
## A HAPPY 6000/D OWNER

In September of 1980, I purchased a new COINMASTER 6000/D. It is now the end of December and I have dug up 2,600 coins. My best spot was an old ballfield where I dug up 745 coins - Out of them, 45 pieces of silver, 2 large cents and 6 rings.

I dug up a lot of garbage with my old GOLDMASTER but with my new COINMASTER 6000/D, all I get is coins. The Discriminator on the 6000/D is amazing!

Daniel G. Schlarman  
Southgate, KY





## **UNBELIEVABLE FIND!!!**

**The two fellows stuffed their clothes full of the \$20 bills and filled three Jerry cans with silver coins - reportedly totalling about \$50,000.**

Jimmy Sierra, the White's Electronics Distributor for California, learned of the faith healer's hoard and set off with three other treasure hunters (Ray Bolduc of Tahoe Treasure Cove; Ed Milota of Search and Recover in Ventura and Don Arthur, president of the Sierra Diggers of South Lake Tahoe) to strike it big.

From what they could find out through second-hand information, there was a total of about 5000 silver dollars alone! The whole amount was certainly in excess of \$50,000 market value.

Subscribe Or Pick Up One Of These Magazines Today!!!



Each issue of these magazines contain information for the Treasure Hunter, Coinshooter, Prospector, or Relic Hunter.

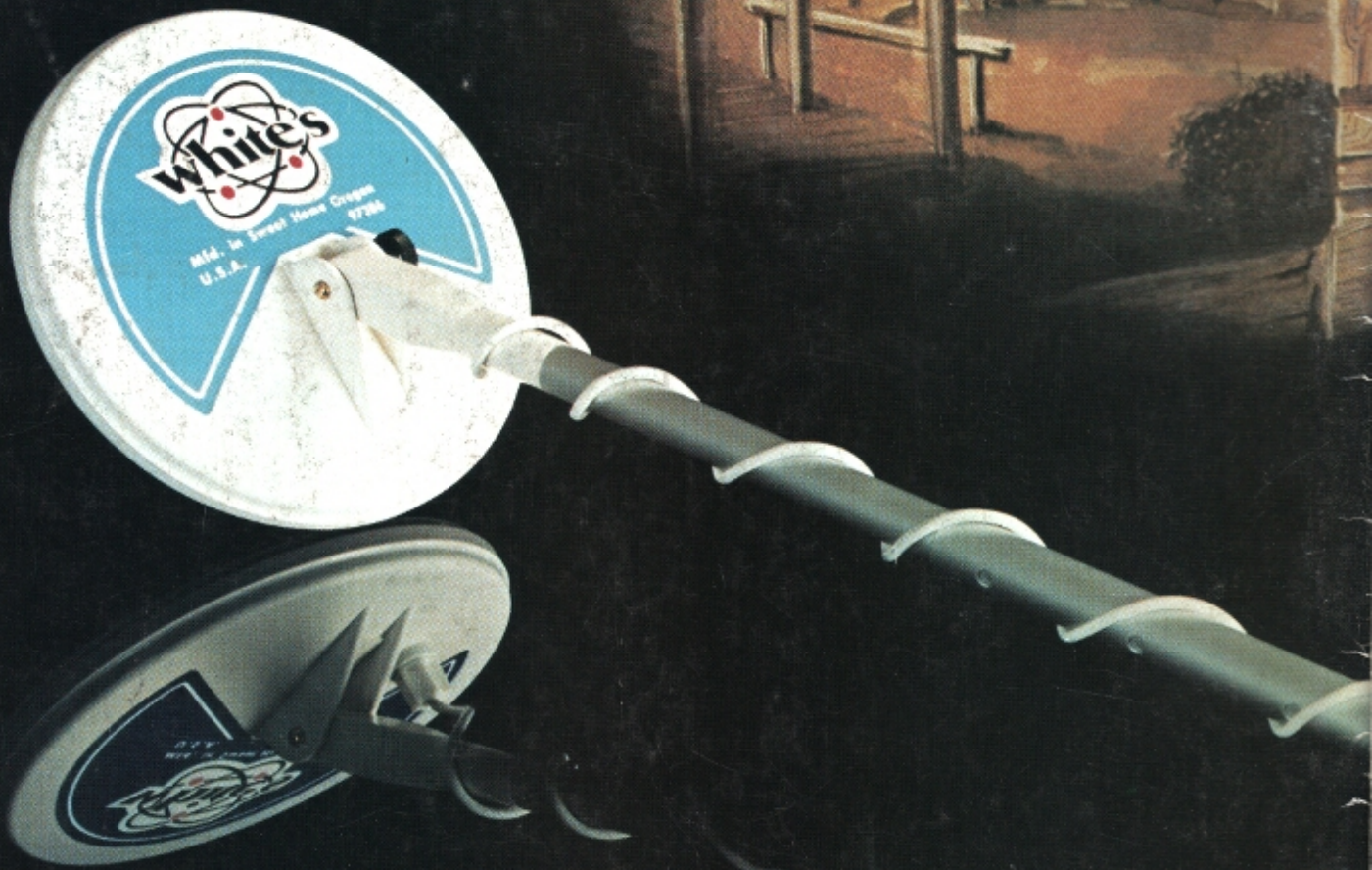
You can keep up with White's current Mineral/Metal Detectors, and read what's going on with Treasure Clubs across the nation.

Keep up on current coin information, and read about what other TH'ers are finding.

Each magazine holds a world of information for the metal detecting hobbyist.

**BE SURE TO SEE WHITE'S TREASURE HUNTING MAGAZINE "DISCOVER"!  
"DISCOVER" IS PUBLISHED 4 TIMES A YEAR AND COSTS \$1.75 FOR THE 4 ISSUES.  
SEND YOUR CHECK OR MONEY ORDER ALONG WITH YOUR NAME AND ADDRESS TO:**

**WHITE'S ELECTRONICS, INC., %DISCOVER SUBSCRIPTION DEPT., 1011 Pleasant Valley Road, Sweet Home, OR 97386**



White's Electronics, Inc., 1011 Pleasant Valley Rd., Sweet Home, OR 97386

Catalog 0-81-1