



79/80 CATALOG OF MINERAL/ METAL



DETECTORS



Treasure hunting with electronic metal detectors has grown into a major activity, enjoyed by people of all ages. Unlike camping or sailing, the sport can be pursued anywhere. Furthermore, once the initial investment is made in an instrument, like our popular units shown in this catalog, time devoted to this fun filled outdoor hobby continually pays dividends in the form of coins, rings and other relics found with it.

Very often local parks, beaches, playgrounds and other public places are steeped in historical events and tales of long forgotten treasures. Many a treasure hunters back yard has even yielded items of great value, either monetary or sentimental in the case of a small keep sake ring in the grass too difficult to find without the aid of electronic detection.

White's Electronics, have managed to drastically reduce the overall size and weight of the instruments through use of compact, miniaturized electronics with equally miniaturized power requirements such as our sensational rechargeable batteries with chargers. At the same time our instruments surpass other metal detectors with efficiency, versatility and ease of operation. White's is the pioneer in developing superior quality electronic metal locating instruments. Models are featured at all the prices you can afford and also credit cards are accepted by a White's participating dealer.

Many people pay for their units many times over just with the finds they make. It has been estimated that several million people have taken to this sport and at a average hours use, many people find coins worth a dollar in face value. White's is the largest manufacturing company of electronic locating equipment in the world today, with their superior workmanship, advanced research and engineering. The continual research for better electronic techniques and to produce the top of the line instruments for your needs, is a never ending function of the company.



White's Electronics, Incorporated is owned and operated by Kenneth G. White Sr., Mrs. Olive White, and Kenneth R. White Jr.

It began when Olive took a trip to Idaho on the Salmon River. She always enjoyed prospecting, and was intrigued by the mineralization.

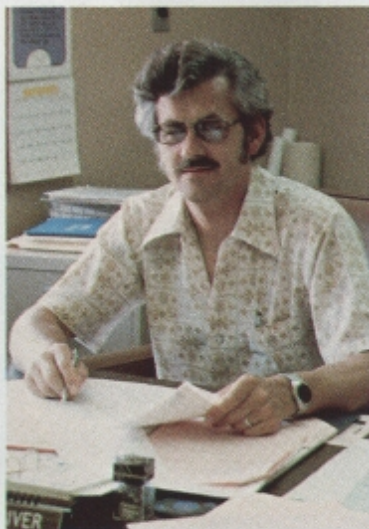
Olive asked Kenneth to come to Idaho and take a look at the country. Since he had the background in electronics, he began to think of a way to detect ore bodies electronically. From Gieger Counters to Electronic Mineral/Metal Detectors, the White's began the foundation of a company, which has become the largest Manufacturing Company of Mineral/Metal detectors today.

As he built the company from ground up and did an outstanding job in making White's number 1 in the industry, no one else in the detector field has ever come close to the revenue of sales as White's. In recent years however, he has acknowledged, that due to the size and growth of the corporation, it could be better managed by a professional staff, to perform the operations of Marketing, Production, Finance, and Engineering with the coordination of all these areas through the General Manager.

WHITE'S PROFESSIONAL TEAM



KENNETH R. WHITE JR., VICE PRESIDENT — Kenneth is very vocal in giving much needed insight into the market needs of the consumer. To this day Kenneth takes a very active interest in field testing present products, experimental products and especially the underwater products, to insure the quality and performance are meeting the very highest standards of White's and also the needs of the metal detector user are being met. Kenneth was very instrumental in giving support and encouragement in the sensational COIN-MASTER 6000/D project.



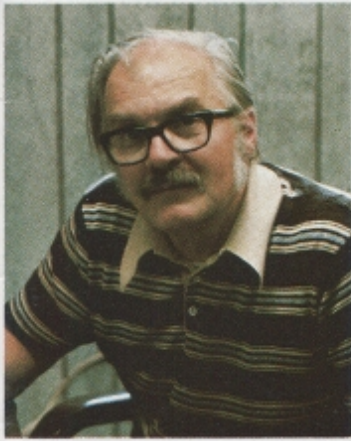
NORMAN VANDIVER, GENERAL MANAGER — Norm's previous employment has been with Boeing Air Craft in Seattle Washington as Maintenance and Calibration Technician of precision test equipment. He also worked for RCA Service Co., on White Alice Communication Systems in Alaska. In 1968, Norm came to work for White's as Customer Service Technician. He was transferred to Manufacturing and worked as back up to General Manager and was soon promoted to General Manager. Norm's goal is to coordinate all functions of White's operations.



GARY MORRIS, MARKETING MANAGER — Gary spent eight years in the Air Force as an Electronics Technician before joining White's in 1970. He's had experience through various promoted positions, from Service Manager, Sales and Service Manager, Engineering and his position now as Marketing Manager. Gary maintains a constant coordination of new products in conjunction with market research. His main job is to see to it, the customer has the **right product**, at the **right price** at the **right place** and the **right time**.



BILL COLSON, MANUFACTURING MANAGER — Bill joined White's Electronics in August 1976 as an Assistant Manufacturing Manager. He was promoted as the Manufacturing Manager in February 1978. His previous experience included 20 years with Allen Bradley Company where he worked in various managerial capacities. He is a graduate of the Milwaukee School of Engineering with a degree in Industrial Management. The Manufacturing division's primary objective is to manufacture a high quality reliable product on schedule to meet customer requirements.



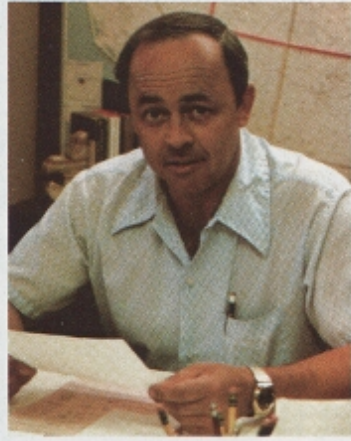
DOUG JOHNSON, PROJECT ENGINEER — Doug graduated from the University of Washington with a B.S. in Mathematics plus three years of graduate work. He was employed at Boeing Aircraft Company for three years as a Mathematical Analyst. The next ten years were spent in medical fields doing analysis and instrumentation for Cardio-Pulmonary and Neurological research. This was followed by two years of Microprocessor Interface Design for Industrial Telemetry and Control. Doug has been employed by White's since April of 1978 and is currently involved with new loop design and future metal detector products.



ROGER CONSORTI, MANUFACTURING ENGINEER — Roger joined White's Electronics in January of 1979 as Supervisor of the Quality Control Department. He was promoted to Manufacturing Engineer in March. His previous experience includes six years with the Farinon Electric Corporation where he worked in various engineering and supervisory capacities. He is a graduate of Santa Clara University with a Bachelor of Science Degree in Electrical Engineering. The Manufacturing Engineering Department's responsibility is to provide technical liaison and quality assurance between the Marketing, Engineering, and Manufacturing Divisions.



BILL WEND, MECHANICAL ENGINEER — Bill spent four years in the Air Force as a designer of highly specialized photographic equipment. After his service, Bill attended the University of Colorado, University of Dayton and Santa Ana College, for courses in Engineering. He worked for North American Aviation, now Rockwell International for 18 years. His work included Electronic Packaging Specialist and work on spacecraft such as the Apollo program and the Mars Viking Lander, which put the first spacecraft on the surface of Mars. Bill also worked at Kaiser Aerospace and Hughes Aircraft before coming to White's. He was hired as Manufacturing Engineer, and later promoted to Mechanical Engineer. The new low profile cases are just one of the new product designs Bill has come up with.



RON SHEARER, SALES MANAGER — Ron came to work for White's Electronics as Sales Manager in March 1979. Prior to joining White's, Ron spent 20 years in various sales management positions mostly in the hotel field. His most recent position was Western Regional Director of Sales for Topeka Inn Management, Inc., the largest franchise operator of Holiday Inns in the world.



RICHARD HIRSCHI, PROJECT ENGINEER — Richard attended Oregon State University from 1966 to 1969 in the school of Electrical and Electronics Engineering. He worked as a White's Service Technician in 1969 and 1970 and Engineering Technician in 1971 and 1972. He was promoted to project Engineer, and his recent design projects include the COINMASTER 6000/D, 6/DB and the COINMASTER TR.



CHRIS THOMERSON, ENGINEERING MANAGER — In 1969, Chris graduated from the University of Manchester (England) with a B.S. in Electrical and Electronic Engineering. He spent four years working for the British Governments Scientific Civil Service, Transport and Road Research division as Higher Scientific Officer. He was employed at Moseley Assoc. Inc. in Santa Barbara, California for two years in Broadcast Studio Electronic Peripherals Design. Chris worked at White's for six months as a Project Engineer before being promoted to Engineering Manager. Also in December 1978, Chris became Data Processing Department Manager. He insures new products are being continuously researched and developed.



DIANA BAUMGARTNER, ACCOUNTING MANAGER — Diana is a graduate of Portland State University, Portland, Oregon with a B.A. degree in Business Administration. Prior to coming to White's, Diana worked for a Certified Public Accounting firm in the Portland area. Diana's department is responsible for all of the accounting and financial reporting activities for White's Electronics.



PAM DOAN, ADVERTISING MANAGER — Pam joined White's in 1973 as the Advertising Secretary and Graphic Artist. Prior to employment at White's, she studied for four years in various fields of art mediums and has attained out of those four years some credits from Linn Benton Community College in Albany, Oregon. She's had on the job training in the Advertising field under supervision of several Advertising Managers.

Pam assisted in all areas of media as well as technical graphics for Engineering. In the fall of 1978, Pam was promoted to Advertising Manager. All Advertising programs are handled through White's In House Advertising Agency, with direct coordination from the Marketing Department. Pam is also the Editor of "DISCOVER" Magazine, a publication published by White's Electronics.



BOB HILL, SERVICE MANAGER — Bob served in the United States Navy for a period of 11 1/2 years as both an Electronics Technician and an Electronics Instructor. He has been employed at White's since January 1976, and recently became Service Manager, and in his own words, he is doing his best to coordinate the efforts of the Service Centers throughout the country, overseas and the Service Department here at the factory. Prior to Bob's promotion, he served as Service Department Technician.

White's Tradition of Quality and Performance Starts Here . . .

At White's, there are four basic areas of assembly in the production area of White's Mineral/Metal Detectors.

First, is the Loop Assembly, second, the Printed Circuit Board Assembly, third, the Aluminum or Sheet Metal Assembly, and fourth, is the Final Assembly of bringing all the other three components together.



Loop Production area



Additional space utilized for loop testing and storage. The loops that you see here are of standard 4B type.



The P.C. Board area is where the printed circuit boards are "stuffed" with the electronic components, especially chosen by White's for their high quality.



Here you see the operation of taking the bare wire and winding it on four spools simultaneously, which are used as the search coil or sensing device for the electronic metal detector.



Actual Loop Assembly process. The loops are placed inside the foam holder and then soldered to the loop cable which plugs into the detector housing. This type of loop shown here, is a revolutionary new loop design, pioneered by White's Electronics. The loop is Patent Pending for the fantastic capabilities of eliminating the back reading problem for all practical purposes that is present in almost all other TR type loops. The back reading problem is a bad object which will appear or read as a good object when it gets close to the bottom of the search coil.



Shown here is the Electronic Automatic Soldering Equipment, "Solder Wave Machine", skimming over the top of a "river" of molten solder. See Photo #7





One of our machines is being used to bend the sheet metal into the proper shape. After the sheet metal is bent, it is sent to the paint shop where it is etched in a large tank to make sure that the paint will adhere to the aluminum. It is then sent to the painting area where a very high quality paint is applied. See 9 and 10.



Instruments are placed inside a large oven to bake, to insure the paint will dry quickly and evenly to a very hard durable finish. Above, you see our silk screening operation where the white paint is applied to produce the lettering.



FINAL ASSEMBLY AREA - The Assembly building is where circuit boards are installed into the aluminum housing and loops are then attached, so the unit can be tested to insure that all components are operating properly.



This area shown is just one of the many Quality Control areas that White's has throughout the assembly department. Each component is inspected to make sure it is the highest quality and to insure that when a customer gets his detector, it will operate properly. Loops and P.C. boards are quality checked before they are sent to final assembly. In this Quality Control area, you see the printed circuit boards being tested to insure they are operating correctly before they are sent to final assembly.

White's can not over stress the importance of quality in their products. As you notice in these photos, each step of the production of White's Mineral/Metal Detectors is closely followed through with experienced technicians, to make sure the product reaches the customer with confidence of quality built instruments. Nearly all circuits used in White's instruments are patented or Patent Pending. This assures you of getting an up to date and most advanced instrument.



Here, instruments are being packaged and sent to the Finished Goods Warehouse to be prepared and ready for shipping.

A NEW REVOLUTIONARY CONCEPT!
THERE'S NOTHING ON THE MARKET LIKE IT!



INTRODUCING WHITE'S
COMPLETELY NEW
COINMASTER TR
ALL METAL DETECTOR *(A.G.C.)
*(AUTOMATIC GROUND CANCELLATION)



JUST ONE
SINGLE CONTROL
DOES IT ALL!

We believe this completely new economy TR is the simplest, newest and easiest instrument to operate over mineralized ground and obsoletes the conventional and popular standard TR instruments of the past. Designed for the first time buyer who wants to find **all metals**, the price is **RIDICULOUSLY LOW**. DO NOT LET THE LOW PRICE FOOL YOU. ALL WHITE'S instruments have the same **HIGH QUALITY** which we have been famous for. THIS INSTRUMENT **AUTOMATICALLY CANCELS OUT THE MINERALIZED GROUND ELECTRONICALLY**. Compare it with any other makes at \$100.00 for quality and performance. We think this economy TR will **WIN** on all counts.

- QUALITY • PERFORMANCE • PRICE
- EASY OPERATION, WITH JUST A SIMPLE SINGLE POWER TUNER, COMBINED CONTROL
- POWERED BY A SINGLE LOW COST #216 EVEREADY 9 VOLT BATTERY
- BUILT IN SPEAKER WITH AMPLE VOLUME
- STURDY ALL METAL ENAMELED CASE WITH LATCHING AND HINGED DOOR
- STURDY HEAVY DUTY HANDLE
- 6" WATERPROOF LOOP
- AUTOMATICALLY REJECTS THE GROUND
- FEATHERWEIGHT, JUST 2 lbs. 11 oz. (43 OZ.)



\$49.95

SPECIAL INTRODUCTORY OFFER PRICE.

WHITE'S NEW TR MODEL. DETECTS BOTH FERROUS AND NON-FERROUS METALS AUTOMATICALLY ON THE SAME SETTING, SO NOTHING IS MISSED OR LEFT TO CHANCE WITH NO EXTRA TUNING CONTROLS. FANTASTIC FOR TREASURE HUNTS BECAUSE THE LOOP IS SENSITIVE ACROSS THE ENTIRE LOOP. YOU HAVE THE FULL 6" INCHES SEARCHING FOR YOU, INSTEAD OF JUST A SMALL "HOT SPOT" AS ON OTHER TR LOOPS!

COINMASTER TR (A.G.C.)*

*(AUTOMATIC GROUND CANCELLING)

SO LIGHT... YOU CAN SEARCH AS FAST AS POSSIBLE WITHOUT GETTING TIRED AS YOU WOULD WITH A HEAVY DETECTOR. *(Most Treasure Hunts are "SPEED" hunts and not depth or detector performance hunts, but use

this sensational unit anywhere. Playgrounds, parks, beaches, it doesn't make any difference! You'll notice the fantastic performance, depth and ease of operation, while it AUTOMATICALLY REJECTS THE GROUND!

White's lowest cost push button Discriminator.

The factory has pre-set the tuning on this detector so all you need to do is just three steps.

1. Set the Discriminator amount.
2. Turn on the detector, with loop on the ground.
3. Push the Tuner button and start finding (most) valuable items.



NO NEED TO TUNE THIS ONE!

Tuning has been preset by factory. All you do is push the button to obtain tuning level. Discriminator adjustment is a Single Turn Control with types of junk items labeled, so you eliminate what you want.



\$99.95

- STURDY ALUMINUM CONSTRUCTION
- ADJUSTABLE ANODIZED ROD
- HIGH FORWARD HANDLE FOR EXCEPTIONAL BALANCE
- 1/4" HEADPHONE JACK
- L.E.D. BATTERY CHECK
- FEATHER TOUCH TUNING (FTT)
- HINGED AND LATCHED BATTERY DOOR FOR ACCESS (No Screws to remove)
- HIGH QUALITY BAKED ON ENAMEL FINISH
- ON/OFF VOLUME CONTROL COMBINATION

- EXCEPTIONAL BATTERY LIFE, LOW-CURRENT DRAIN
- ONLY ONE 9 VOLT MINIATURE LOW COST TRANSISTOR BATTERY IS USED
- RECHARGEABLE 9 VOLT BATTERY AND CHARGER (OPTIONAL)
- WEIGHT: 2 lbs. 11 oz. (43 oz.)



COINMASTER 1/DB

- U.S. PATENT #4030026 and CANADIAN PATENT #1038036

OUR LOWEST PRICED TR DISCRIMINATOR. SEPARATES COINS FROM JUNK!

SO EASY TO OPERATE, SO LIGHTWEIGHT, YOU CAN USE IT ALL DAY!



White's 2/DB is basically an upgraded version of the 1/DB. It has all the features of the 1/DB, plus the addition of a tuner for more precise tuning and a sensitive Signal Intensity Meter that reads the highest when the loop is directly over the metal object and for more accurate battery checking.



\$149.95

U.S. PATENT #4030026
CANADIAN PATENT #1038036



COINMASTER 2/DB

FANTASTIC FEATURES AT A FANTASTIC PRICE
EASY TO OPERATE WITH QUALITY AND PERFORMANCE!



HIGH FORWARD HANDLE FOR EXCEPTIONAL BALANCE

AUTOMATIC PUSH BUTTON TUNING



SENSITIVE, EASY TO READ 1½" JEWEL BEARING SIGNAL INTENSITY AND BATTERY CHECK METER

BATTERY TEST BUTTON

EXTRA FINE ONE-TURN TUNER

ON/OFF VOLUME CONTROL COMBINATION

MINIMUM, MAXIMUM DISCRIMINATOR CONTROL

STURDY ¼" HEADPHONE JACK

HINGED AND LATCHED BATTERY DOOR FOR EASY ACCESS (NO SCREWS TO REMOVE)

POWERFUL SENSITIVE BUILT-IN SPEAKER

- 6" SUPER WIDE SCAN ADJUSTABLE ANGLE LOOP
- ADJUSTABLE GOLD ANODIZED ROD
- PLASTIC ISOLATOR FOR UNIFORM SEARCH PATTERN
- ONLY ONE LOW COST 9 VOLT TRANSISTOR BATTERY IS USED
- HIGH QUALITY BAKED ON PAINT
- (OPTIONAL) 9 VOLT RECHARGEABLE BATTERY AND CHARGER FOR ONLY \$14.95
- WEIGHT: 2 lbs. 13 oz. (45 oz.)

Choose from three different types of searching techniques, (or Modes of operation).

METAL - DISCRIMINATE - MINERAL
Find ALL coins and some bad objects, but use your Discriminate Mode to reject those bad objects. The MINERAL settings locate only objects which contains iron such as guns and knives.



\$199.95

U.S. PATENT #4030026
CANADIAN PATENT #1038036



COINMASTER 4/DB

This instrument has the added feature of a Sensitivity Control to compensate for changing ground mineralization and an 8" loop which covers more ground than a 6" loop. It also has more depth on the larger coins and bigger objects.

**MOST POPULAR TR DISCRIMINATOR WE'VE EVER BUILT, IS BETTER THAN EVER.
THE FAMOUS COINMASTER 4/D, NEW AND IMPROVED, WITH A SUPER SENSITIVE CIRCUIT.**



- 8" SUPER WIDE SCAN ADJUSTABLE ANGLE LOOP (WATERPROOF)
- ADJUSTABLE GOLD ANODIZED ROD
- OPERATES WITH JUST ONE 12 VOLT BATTERY PACK
- NEW PATENTED CIRCUIT
- NEW LOW PROFILE CASE
- LATCHED DOORS FOR EASY ACCESS. NO BOTHERSOME SCREWS TO REMOVE
- PERFORMS THE OPERATION OF THREE INSTRUMENTS ALL IN ONE.
 1. a regular TR detector for non-magnetic metals
 2. a TR Discriminator
 3. a magnetic (iron) detector for magnetic metals
- (OPTIONAL) 12 VOLT RECHARGEABLE BATTERY AND CHARGER AVAILABLE AT \$27.25
- WEIGHT: 4 lbs. 9 oz.



"BALANCE OUT" the mineralization of the ground so you can get the same depth in the ground, as you do in the air. The G.E.B. ALL METAL Mode allows you to get MAXIMUM depth all the time, regardless of the soil condition!



\$269.95

U.S. PATENT #4030026
CANADIAN PATENT #1038036



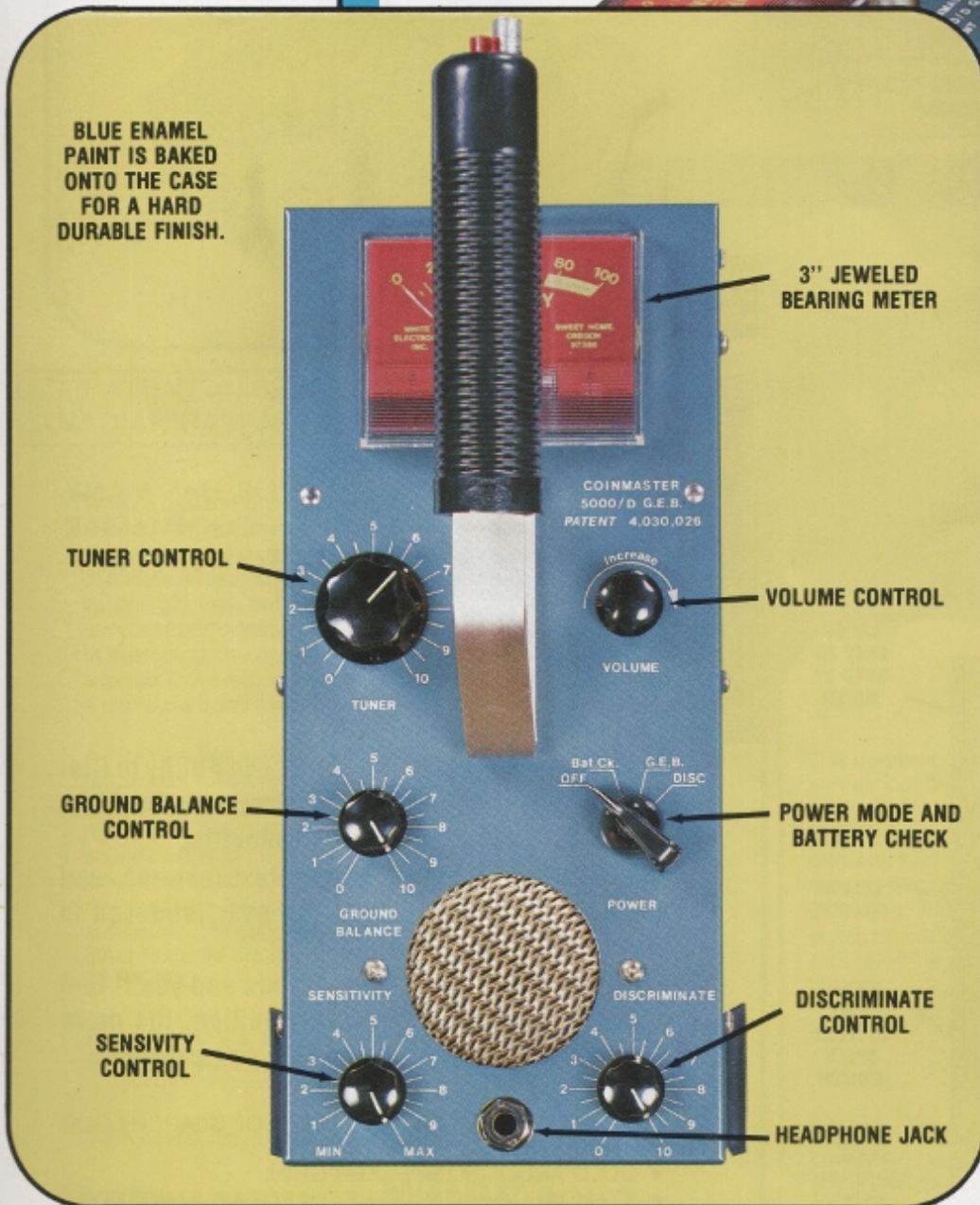
AN UNBELIEVABLE SUPERIOR INSTRUMENT! OUR BEST SELLER!

COINMASTER 5000/D

COMES STANDARD WITH RECHARGEABLE BATTERIES, A REAL MONEY SAVER!

THREE IN ONE

1. G.E.B. not affected by the ground for increased depth.
 2. TR for prospecting, relic hunting or treasure hunting.
 3. DISCRIMINATOR... Rejects ferrous metals and junk.
- G.E.B. DETECTS TWO TO FOUR TIMES DEEPER THAN OTHER TYPES OF INSTRUMENTS, AND IS NOT AFFECTED BY MAGNETIC GROUND OR SOIL, FOR EASY USE.



- NEW LOW PROFILE CASE
- 8" WATERPROOF LIGHTWEIGHT 4 B LOOP WITH INCREASED STABILITY
- STANDARD 12 VOLT SINGLE BATTERY PACK WITH RECHARGEABLE BATTERIES, AND CHARGER
- LOWER CURRENT DRAIN FOR INCREASED ECONOMY OF OPERATION
- COATED P.C. BOARDS FOR GREATER PROTECTION AGAINST HUMIDITY AND TEMPERATURE VARIATIONS IN THIS EXCEPTIONALLY SENSITIVE CIRCUIT.
- WEIGHT: 4 lbs. 8 oz.

COINMASTER 6/DB



NOW AVAILABLE WITH RECHARGEABLE BATTERIES AS STANDARD EQUIPMENT

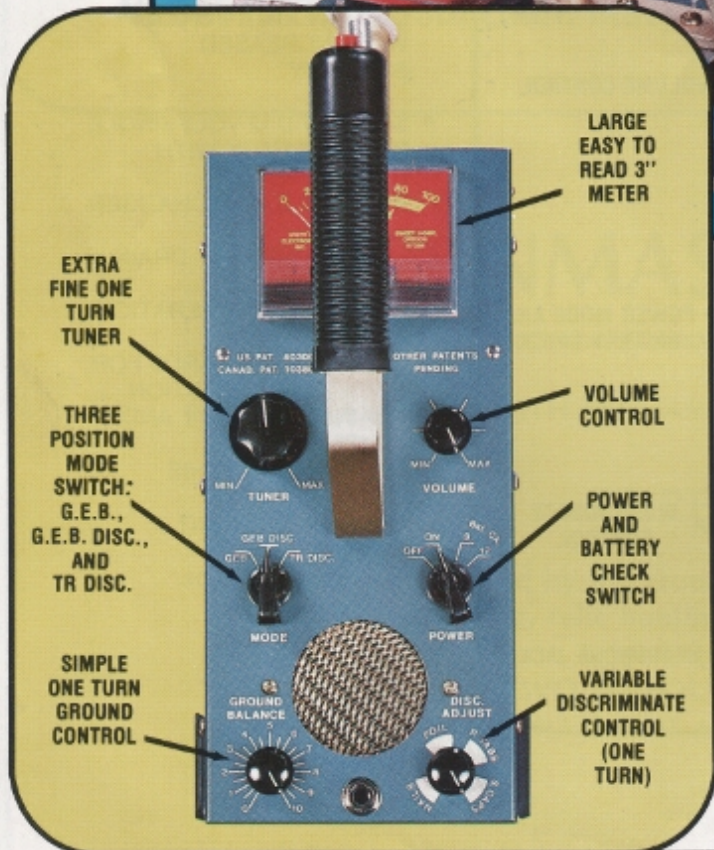


\$369.95

U.S. PATENT #4030026 AND 4128803
CANADIAN PATENT #1038036



WHITE'S NEW 6/DB HAS MANY OF THE FAMOUS COINMASTER 6000/D "CADILLAC" FEATURES.



CUSTOMERS ARE CONVINCED "The Ability to Discriminate While Rejecting The Ground Is The Most Important Feature Available Today!"

The finest instrument, the greatest features, and the best performance we have ever produced in this price range!

Compare the 6/DB to other brands and you'll find that the tougher the ground condition, the more the 6/DB stands out against the competition.

- STURDY GOLD ANODIZED ROD
- 8" ULTRA WIDE SCAN WATERPROOF SEARCH LOOP
- HEADPHONE JACK
- GOLD ANODIZED SPEAKER GRILL
- STANDARD 9 & 12 VOLT RECHARGEABLE BATTERIES COMPLETE WITH CHARGER
- EASY ACCESS, UNLATCH HINGES TO BATTERY COMPARTMENT, TAKES SECONDS!
- WEIGHT: 4 lbs. 13 oz.

YOU HAVE BEEN ASKING FOR IT, AND NOW ITS HERE! THE ALL NEW
COINMASTER 6/DB HIPMOUNT



\$399.95



"THE IDEAL INSTRUMENT WHERE
 THE GOING IS ROUGH" (For
 Prospecting And Treasure Hunting)

U.S. PATENT #4030026 and #4128803
 CANADIAN PATENT #1038036

White's has designed a new hipmount, due to the very large demand from customers. Many customers use a detector for long hours of continuous use and need an exceptionally lightweight unit, but still powerful enough for excellent performance at the greatest depths. In searching, the operator can actually sweep a full six foot area, which is one foot more than a standard hand held model.

A revision has been made on the 6/DB by removal of the housing, so it can rest against the hip or body. It is therefore lighter with little notice of it being at your side except when it sounds off when detecting a find. The probe which connects to the unit, is so maneuverable, it will be exceptionally effective at Treasure Hunts, Prospecting and Coins shooting. All other features are identical to the COINMASTER 6/DB.

**STANDARD 9 & 12 VOLT RECHARGEABLE BATTERIES
 AND CHARGER AT NO EXTRA COST!**

WEIGHT: 4 lbs. 15 oz.



A LARGE
 EASY TO READ
 VIEW METER

AUTOMATIC
 PUSH
 BUTTON
 TUNER
 CONTROL

OTHER PATENTS
 PENDING

The operator carries just the 35 oz. Probe with a 8" waterproof loop, with one hand, leaving the other hand free. Probe is adjustable from 44", to 67" in length.



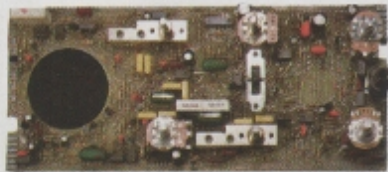
EXCEPTIONALLY MANEUVERABLE

Get all the features of the standard 6/DB plus the versatility of a hip or chest-mounted instrument! Great for overhead search over walls of old buildings nine feet high, brushy areas, checking outcroppings when prospecting and searching in water five feet deep.

COINM



THE ULTIMATE OF ALL ELE
DETECTORS. SO POPULAR
THEY'RE "SOLD ON THE 60
PRECISE. OUR CUSTOMER
ANY OTHER INSTRUMENT C
NOTHING THAT CAN COMP



22 Transistors and 11 inte-
grated circuits are equivalent to
almost 400 transistors. It takes
a lot of circuitry to be the
"Cadillac" of the metal
detectors!

IT'S THE FOUR IN ONE DETECTOR



1. A normal G.E.B.: all metal detector
2. A G.E.B. Discriminator: for depth you never thought possible before in discriminate
3. A TR-Discriminator: for those who prefer the features of a regular TR-Discriminator
4. A G.E.B. Maximum: for those who want those objects that might be just out of the range of the normal G.E.B.

U.S. PATENT #4030026 and 4128803
CANADIAN PATENT #1038036

Exceptionally lightweight 8" loop with an Ultra Wide Search Pattern. THE LOOP DOES NOT HAVE TO BE HELD AT A CONSTANT HEIGHT FROM THE GROUND IN G.E.B. OR G.E.B. DISCRIMINATE as is the case with most Discriminators. The One Turn Tuner, allows a very precise setting without the confusion of a Ten Turn Control.

There are three factory calibrated discriminate levels for instant level switching and a VARIABLE Position. When you are in the VARIABLE DISCRIMINATE levels, this control allows you to choose a different level of discrimination, such as those settings below foil where some of the very thin rings will be found. The PUSH-BUTTON serves two (2) purposes. It can be used to reset the tuning and by holding the button in, you can actually change to a different Mode. For example: If you were searching in the G.E.B. NORMAL MODE and found an object, you could just hold in the button and automatically the detector would switch to the G.E.B. DISCRIMINATE MODE for identification as a good find or bad find.

The ultimate instrument for any type of use. Discriminate at the deepest depth possible today! Bury a penny at three inches. In most areas of the country you won't be able to detect it. With the 6000/D the signal is LOUD AND CLEAR even with the loop an inch or two above the ground in G.E.B. DISCRIMINATE MODE.

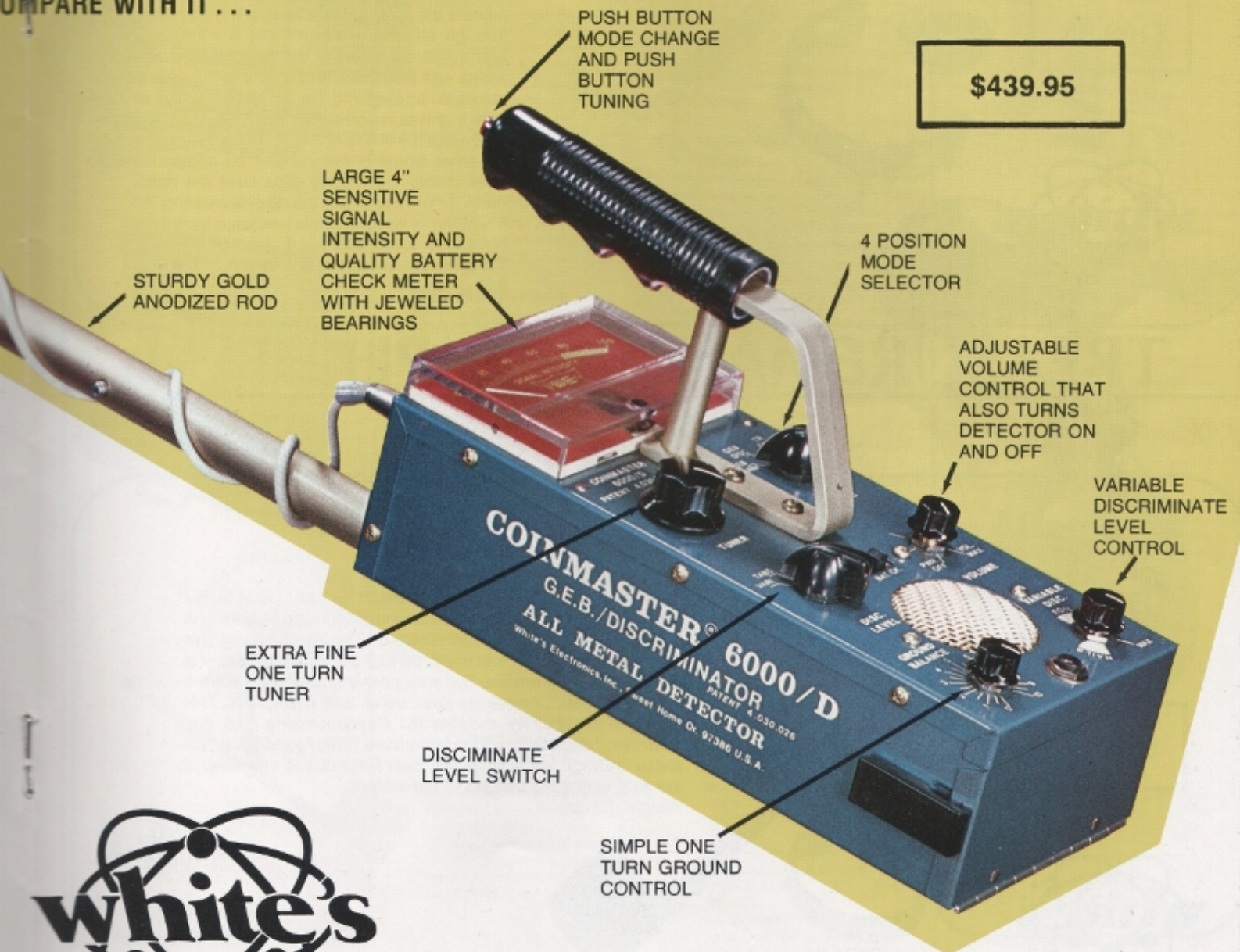
WEIGHT: 6 LBS. 13 OZ.

MASTER 6000/D

... ELECTRONIC MINERAL/METAL
... LAR NOW, OUR CUSTOMERS CLAIM
... E 6000/D". QUALITY, POWERFUL,
... MERS SAY IT "DETECTS DEEPER THAN
... ENT ON THE MARKET TODAY!" THERE'S
... OMPARE WITH IT ...

OUR 6000/D IS THE MOST SENSITIVE
ELECTRONIC MINERAL/METAL DETECTOR
WE HAVE EVER ENGINEERED!

\$439.95



THE WORLD'S LARGEST AND MOST ADVANCED LINE OF
PATENTED MINERAL/METAL DETECTORS EVER MANUFACTURED.

THE OCEAN, LAKES, AND RIVERS HAVE SO MUCH TO OFFER AND YOU HAVE THE OPPORTUNITY TO JUMP IN! WITH THE AMPHIBIAN UNDERWATER METAL DETECTOR.



\$199.95

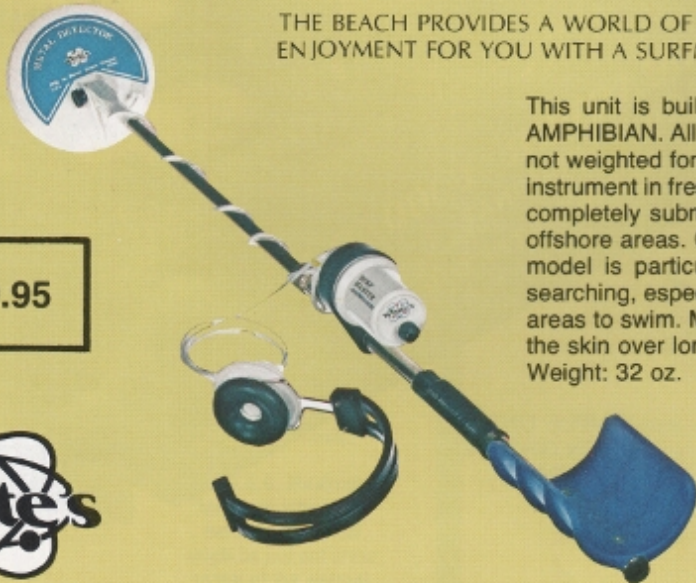


This instrument has been designed for the searcher who explores the world of the unknown, (past and present).

This circuitry has been miniaturized by placement on a single circuit board which slides into a waterproof, corrosion-proof plastic cylinder that mounts atop the rod leading to the loop. One almost wonders what happened to the circuitry box. Power is from a single standard 9 volt transistor battery that slides in beneath the circuit board. When the circuitry and power source have been placed inside, it is all sealed with a plastic lid and O-ring, so it won't be affected by immersion or mud. There is no place on the tiny compact model for assorted dials, knobs or speakers. Just one knob controls the whole unit, turns it on and off, and adjusts the tuning. Reactions are transmitted through an attached cord, and a waterproof and dustproof speaker, to the user. Volume varies with the intensity of reaction, but will not go high enough to be uncomfortable or hearing-hazardous to the user. The TREASUREMASTER AMPHIBIAN has a tiny sensitive Speaker mounted in an adjustable head-clamp that simply clips over the hood, mask, or whatever else the diver is wearing. An 8¼" loop is used which is weighted to reduce buoyancy. Case size . . . 4" long by 2" wide. Total Weight: 34 oz. Headphone cable length: 33".

TREASUREMASTER AMPHIBIAN

THE BEACH PROVIDES A WORLD OF TREASURE AND FULL TIME ENJOYMENT FOR YOU WITH A SURFMASTER



\$199.95



This unit is built on the same design as the TREASURE AMPHIBIAN. All features are the same. The loop however, is not weighted for underwater scuba diving. You may use this instrument in fresh or salt water up to a depth of four feet. It is completely submersible, but was primarily designed for the offshore areas. Completely dust, sand, and waterproof. This model is particularly suitable for Beachcombing and surf searching, especially where swimmers have found favorable areas to swim. Many have lost their rings due to shrinking of the skin over long periods in the water. Weight: 32 oz.

SURFMASTER



A

A. HEADPHONE

You will find a set of headphones a great asset. They plug into the jack which is built into almost all White's instruments. Gives you privacy, and keeps out distracting external noise. Customers agree headphones increase their detection depth on deeper objects, which are almost beyond the instrument's detection range. **\$14.95**



B

B. RECHARGEABLE BATTERIES AND CHARGER

First introduced to the industry by White's two years ago. Under normal use the system will last up to seven years or more. Either 9-volt and/or 12-volt rechargeable batteries are optional. The batteries may be recharged 500 to 1,000 times. This is the same as buying approximately \$1,000 and \$2,000 worth of Carbon-zinc batteries. Rechargeable Batteries: **9 & 12 Volt \$47.25, 12 Volt \$27.25 and 9 Volt At \$14.95.** (a bargain and money saver too!)



C

C. CARRYING CASES

For owners who like to keep their possessions "LIKE NEW!" These beautiful and durable Royalite Custom made cases will protect your detector from everyday bumps and scratches. Precision Die-Cut, protective foam is used to "nest" your instrument when shipping or storing. Each case has custom locks to keep inquisitive little fingers out, and it's ideal for traveling. Carrying Cases Price: **\$29.50**

D



D. LOOP COVERS

Protect your loop from scrapes, with White's injection molded Loop Covers. Fits 8" loops only. **\$3.95 each**



E

E. CONVERSION KIT

Now most of White's instruments may be converted into Hipmounts! There are four different Kits available to accommodate the different types of PLUGS. Check with your dealer for the proper Kit. Shipping weight is less than two pounds. Just **\$29.95**



F. BELT BUCKLES

Some of White's accessories are for you rather than for your detector. Treat yourself to a handsome solid brass buckle, tooled with the White's emblem. It fits most wide belts. **\$4.00 each.**

F



G

G. COIN CLEANER

This Quicksilver Coin Cleaner will restore the natural silver surface to darkened black silver coins without polishing or producing an unnatural appearance to the coin. It will not remove any silver from the coin but will only reduce the silver sulfide or black residue deposited on coins which have been in salt water as well as those buried in the soil. **\$5.95**

H. PROSPECTING EQUIPMENT

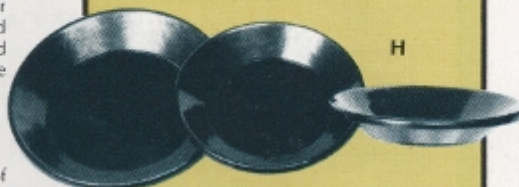
White's offers prospecting equipment to supplement your detector. Sturdy Plastic gold pans come in several sizes and are black to allow you to see the gold flakes easier.

Small 10"/4 oz. \$6.49

Med. 14"/8 oz. \$12.50

Large 17"/14 oz. \$14.80

White's sluice box is made of tough Royalite and designed for efficiency in both use and packing. It collapses into a compact, easy-to-carry lightweight form. Weight: 4 1/2 lbs.



H

I. QUALITY WINDBREAKERS AND JACKETS

Metal detecting is likely to take you where you'll need a windbreaker or an even warmer jacket. White's offers both! Each comes in children's and adults' sizes, so you can outfit the whole family. Choose the unlined style, or one of the cozy quilted lining style. Quilted Jackets: **\$16.95** Windbreakers: **\$10.00**



I

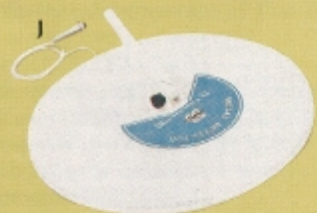
J. 15" G.E.B. LOOP

White's new G.E.B. loop is purposely designed to detect larger objects deeper which normal 6" and 8" loops cannot reach. Detection of depth is as deep as 4 feet, possibly more, depending on the size of the object. Attach to the standard rod of your instrument, or use it with the Hipmount.

PRICE: **\$149.95**

AVAILABLE ONLY ON THE COINMASTER 4/DB AND 5000/D.

AVAILABLE JANUARY 1st, 1980, for the COINMASTER 6000/D, 6/DB and 6/DB HIPMOUNT. Also may be used with optional CONVERSION KIT or standard rod.



J

White's Accessories

HOW TO CHOOSE YOUR DETECTOR

Before you buy a metal detector, the following things should be considered:

1. Should I buy from an established company so I can be sure of getting my instrument serviced in the future? (Will the company still be around?)
2. What are my wants and needs? Or in other words... What type of Metal Detecting do I want to do?

No detector is best for all wants and needs. People buy Cadillacs for different reasons than "Gas Mileage", while others buy Volkswagons for reasons other than luxury.

The following is provided to help you understand the features of the "COINMASTER" Detectors, and how they fit different wants and needs:

OUR COINMASTERS CAN BE PLACED IN THREE CATEGORIES:

1. **GOOD** (\$49.95 - \$149.95)
2. **BETTER** (\$199.95 - \$269.95)
3. **BEST** (\$369.95 - \$439.95)

ALL ARE SUPERIOR IN THEIR OWN PRICE RANGE.

GOOD

The "GOOD" detectors (CM, TR, CM1/DB & CM2/DB) have been designed with the "first time buyer" in mind. Low initial investments with good high quality results.

A. NEW COINMASTER TR with * (A.G.C.) (\$49.95): This detector is a completely new detector from the loop up and is the lowest priced detector we've ever offered! One of the most important features on this detector is the * (A.G.C.) circuit, * (Automatic Ground Cancelling) that keeps the ground from giving "false signals" to the novice operator.

The * (A.G.C.) TR is the simplest, newest and easiest instrument to operate over mineralized ground as well as the lowest priced ever built, and completely obsoletes the conventional and popular standard TR instrument of the past. It makes a very good unit for those "speed" events at treasure hunts. This detector finds ALL METALS with ease. Guns, Knives, etc. that would be missed with a discriminator as well as with coins, rings, gold, copper, and silver.

B. COINMASTER 1/DB (\$99.95): White's lowest cost push-button Discriminator. The factory has pre-set the tun-

ing on this detector so all you need to do is three steps:

1. Set the discriminator amount.
2. Turn on the detector with the loop on the ground.
3. Push the tuner button and start finding (most) valuable items. This detector does not find all metals, and can give false signals from the ground unless you practice with it often. Some people would rather ignore guns, knives and other iron objects, as well as tin foil, pull tabs and bottle caps. To be able to eliminate these objects, a discriminator is needed, and this is a very good low-cost discriminator.

C. COINMASTER 2/DB (\$149.95): The 2/DB is basically an upgraded version of the 1/DB. It has all the features of the 1/DB, plus the addition of a tuner for more precise tuning and a sensitive signal intensity Meter that reads the highest when the loop is directly over the metal object and for more accurate battery checking. Also — the push button tuner is mounted in the handle, for one hand operation, leaving the other hand free.

BETTER

The "BETTER" detectors (CM 4/DB and CM 5000/D) have been designed for customers who want a better than average metal detector.

A. COINMASTER 4/DB (\$199.95): This detector allows the operator to choose from three different types of searching techniques, (or Modes of operation)

1. METAL — In this Mode you are using a fixed amount of discrimination and will find **all** coins and **some** bad objects such as pull tabs.
2. DISCRIMINATE — In this Mode you are able to adjust the amount of discrimination to reject additional bad objects such as pull tabs. This Mode is also on the CM 1/DB and CM 2/DB.
3. MINERAL — This Mode will locate only objects that contain iron, such as guns, knives, etc, and will not detect non-iron (non-ferrous) metals such as coins, aluminum etc. This Mode is not found on very many detectors. In addition to these three Modes on the COINMASTER 4/DB, you also have a sensitivity control to compensate for changing ground mineralization and an 8" loop which covers more ground while searching, than with a 6" loop and also has more depth on the larger coins and bigger objects. The mineral setting is very important for the prospector, as the instrument will then detect magnetic veins and ore bodies that may have a capping of magnetic iron over them, and this is what the prospector is looking for!

B. COINMASTER 5000/D — This detector is our most popular model. It basically has the discriminate capabilities of the CM 4/DB plus an ALL METAL (G.E.B.) Mode that can



be adjusted to "BALANCE OUT" the mineralization of the ground so you can get the same depth in the ground as you do in the air. The depth available on a detector without a G.E.B. (Ground Exclusion Balance) ALL METAL Mode is mainly determined by the amount of **mineral in the soil** you are searching in. Which means in some areas you might be able to only penetrate 2" for most newer coins and 4" to 6" on older coins. While in other areas you may go 2" to 4" **deeper!** BUT with the G.E.B. ALL METAL Mode you get **MAXIMUM** depth all the time regardless of the soil condition! Also the 5000/D comes standard with rechargeable batteries! A real money saver!

BEST

The "BEST" detectors (CM 6/DB - CM 6/DB HIPMOUNT and CM 6000/D) were designed for the customer who wants the BEST detectors available.

A. COINMASTER 6/DB (\$369.95), **COINMASTER 6/DB HIPMOUNT** (\$399.95): It has all of the features of the 6000/D except for the following: G.E.B. MAXIMUM Mode and three separate factory preset discriminate positions (a fully variable discriminate control is provided.)

Except for those additions mentioned above, these models have the same capabilities as the famous COINMASTER 6000/D (and now this even includes rechargeable batteries). Even though the price of the 6/DB has gone up slightly, we have included the rechargeable battery system.

B. COINMASTER 6000/D (\$439.95): We feel this detector is by far the best detector on the market today! Since the introduction of the 6000/D last summer, the sales have continued to grow by leaps and bounds. It is now our next best seller and by the time of this printing it probably will be our best seller! The main reason for its popularity is its ability to discriminate the **DEEPEST POSSIBLE DEPTH** available today! Also the loop **DOES NOT HAVE TO BE HELD AT A CONSTANT HEIGHT!** You can hunt in the G.E.B. NORMAL Mode and locate ALL METALS or you can hunt in the G.E.B. DISCRIMINATE Mode and rule out selected junk metals. This detector is the **BEST COINSHOOTING** detector we've ever built and we've ever seen! It also is the **BEST ALL AROUND DETECTOR BUILT.** It's no wonder that we've been unable to meet the demand on this model since it first came out!

As you search with this detector in the G.E.B. DISCRIMINATE Mode, the sound and meter stay **VERY STEADY** until you go across a target.

THERE ARE 8 BASIC TYPES OF METAL DETECTORS

1. BFO METAL/MINERAL - We don't feel this type of detector offers any advantage over the TR types AND we feel it has a definite disadvantage of not being as sensitive as the TR. The stability of these BFO types of units is usually below average and stability is very important. BFO stands for Beat Frequency Oscillator. Metal-Mineral means it can discriminate or tell the difference between two types of metals: 1.) Non-Ferrous Metals, or 2.) Ferrous Metals, (Mineral) We do not produce BFO units for the negative reasons stated above. We discontinued these years ago and so have most all other manufacturers.

2. BFO DISCRIMINATOR - Same as above only with the slight possibility of more selective discrimination.

3. TR ALL METAL - A Transmit-Receive detector that generally is regarded as more sensitive and more stable than a BFO. ALL METAL means it has the ability to detect ALL METALS, (Ferrous and Non-Ferrous) at the same time. The difference between a TR ALL METAL detector and a G.E.B. ALL METAL detector is the TR unit does not have a ground balance circuit so depth of detection is reduced over magnetic soil.

4. TR METAL/MINERAL - A Transmit-Receive detector that can discriminate between Ferrous and Non-Ferrous metals. The advantages of this detector are 1.) ability to discriminate between Ferrous and Non-Ferrous, 2.) good stability, 3.) low cost. The disadvantages are: 1.) the ground soil condition can cause false readings and loss of depth.

5. TR DISCRIMINATOR - Same as TR METAL/MINERAL except it has the capability of more selective discrimination.

6. G.E.B. ALL METAL - A Transmit-Receive detector that detects both Ferrous and Non-Ferrous Metals at the same time and has a ground circuit and ground control that can adjust out the effects of different soil conditions to allow for MAXIMUM depth and no false readings from the ground. It is exceptionally easy to use with no ground interference. The only disadvantage with this detector is that it cannot discriminate while the ground is adjusted out.

7. G.E.B. or TR DISCRIMINATE - A Transmit-Receive detector with dual circuits that gives you at least two detectors in one; **YOU HAVE THE DEEPEST DETECTION IN THE G.E.B. POSITION AND A TR-DISCRIMINATOR IN THE TR DISC. POSITION AT THE TURN OF A SWITCH, ALL IN THE SAME INSTRUMENT!** Its only real disadvantage is that it cannot be both types at the same time.

8. G.E.B. DISCRIMINATORS - A Transmit-Receive detector that can be a G.E.B. and a G.E.B. DISCRIMINATOR, both at the same time! It will achieve MAXIMUM depth WHILE discriminating and has the capability of four different detectors. Like having four detectors in one.

1. A regular G.E.B.
2. A G.E.B. Discriminator
3. A regular TR Discriminator
4. An ultra super sensitive G.E.B. for even greater depth of detection.

WHERE TO COINSHOOT

1. Playgrounds	2
2. Campgrounds	3
3. Picnic Areas	3
4. Public Parks	2
5. Amusement Parks	1
6. Circus Grounds	1
7. Fairgrounds	1
8. Carnival Grounds	1
9. Exposition Sites	1
10. Revival Grounds	2
11. Football Fields	1
12. Baseball Fields	2
13. Soccer Fields	1
14. Polo Grounds	2
15. Badminton Courts	4
16. Volleyball Courts	4
17. Around Old Churches	1
18. Around Old Schools	1
19. Old Houses	2
20. Under Porches of Old Houses	2
21. Old Train & Bus Stations	2
22. Along Sidewalks	4
23. Ghost Towns	2
24. Foundations of Old Buildings	2
25. Under Old Floors of "Outhouses"	1
26. Beaches	1
27. Beach Concession Stands	1
28. Grassy Area Above Beach	1
29. Under Boardwalks	1
30. Around Swimming Pools	1
31. Shallow Water — Swimming Area	2
32. Banks of Fishing Lakes	2
33. Under Fire Lookout Towers	2
34. Old Fence Post Holes	1
35. Around Parking Meters	1
36. Parking Lots	3
37. Under Bleachers	2
38. Auction Sites	2
39. Old Cemeteries	2
40. Outdoor Markets	2
41. Old Stage Coach Stops	2
42. Old Army Campsites	2
43. Old Gypsy Campsites	2
44. Battlefields	3
45. Under Large Trees	2
46. Demonstration Sites	2
47. Drive-In Theatres	3
48. Race Tracks	2
49. Horse Rings	2
50. Around Old Mailboxes	2

The areas where you can successfully coinshoot are only limited by your own imagination and research. More money has been lost than been found. A heavy screwdriver or similar device is all that is needed for most coinshooting, and leaves no holes. If necessary to dig, ALWAYS neatly cover the holes. This is the first and most important responsibility of anyone who detects, no matter where it is done.

* RATING GUIDE

- 1. - Excellent
- 2. - Good
- 3. - Good, but pull tab & bottle cap area.
- 4. - Average

In summing up the major factors:

COINMASTER TR - For a beginner who wants to find everything. The easiest to use detector we've ever built.

COINMASTER 1/DB - For the beginner who wants to be able to select between good objects and certain bad objects. This unit requires more patience and practice than the COINMASTER TR because it reacts to the mineral in the soil.

COINMASTER 2/DB - Same as the 1/DB only it has more flexibility in setting the tuner, a meter and Push-Button in the handle.

COINMASTER 4/DB - For the customer who wants a more versatile and better detector than the COINMASTER 2/DB.

COINMASTER 5000/D - For the customer who wants to be able to find all metals at maximum depths and also have most of the discriminate features on the COINMASTER 4/DB. (A TR discriminator or a G.E.B. all metal detector)

COINMASTER 6/DB & 6/DB HIPMOUNT - For the customer who wants the best without some of the extras.

COINMASTER 6000/D - For the customer who wants the very best for both coinshooting and all other types of hunting. (A TR discriminator or a G.E.B. all metal detector, a G.E.B. discriminator and special G.E.B. for extra depth of detection.)



DATA CHART

METAL DETECTOR DATA SHEET

FOR

WHITE'S ELECTRONICS, INC.'S CURRENT MODELS

CODE:
 A = SUPERIOR
 B = VERY GOOD
 C = GOOD
 D = OK

CIRCLED LETTER OR NUMBER INDICATES BEST RATING

TYPE OF HUNTING	CONMASTER TR		CM 10B		CM 20B		CM 40B		CM 5000D		CM 6000/D		CM 6000/D		TM AMPHIBIAN		TM SURFMASSTER		X-500 TR ONLY	
	TR ONLY	TR	TR	DISC	TR	DISC	TR	DISC	TR	DISC	TR	DISC	TR	DISC	TR ONLY	TR ONLY	TR ONLY	TR ONLY		
1. TREASURE (LARGE OBJECTS)	D	D	D	D	D	D	C	C	A	C	A	A	C	A	D	D	D	D	A++	
2. COIN SHOOTING	C	C+	C+	C+	C+	C+	B	B	A	B	A	A	A	A	C	C	C	C	-	
3. PROSPECTING	D	D	D	D	D	D	C	C	A	C	A	A	A	C	D	D	D	D	C	
4. RELIC HUNTING	D	D	D	D	D	D	C	C	A	C	A	A	A	C	C	C	C	C	C	
TYPE OF ENVIRONMENT																				
1. IN FRESH WATER	C	C+	C+	C+	C+	C+	B	B	A	B	A	A	NO	B	A	(A)	B	NO	C	C
2. IN SALT WATER	D	C	C	C	C	C	B	B	A	B	A	NO	B	A	D	D	D	D	-	
3. OVER WET SAND (SALT)	D	C	C	C	C	C	B	A	C	B	C	A	C	C	C	C	C	C	C	
4. OVER LIGHT MINERAL GROUND	C	C+	C+	C+	C+	C+	B	B	A	B	A	A	A	A	A	(A)	A	A	C+	C+
5. OVER MEDIUM MINERAL GROUND	C	C	C	C	C	C	C+	C+	A	C+	A	A	A	A	B	A	A	A	C	C
6. OVER HEAVY MINERAL GROUND	C	D+	D+	D+	D+	D+	C	C	A	C	A	A	A	C	D	D	D	D	D+	
7. COMPLETELY SUBMERSIBLE	NO	NO	NO	NO	NO	NO	NO	NO	NO	NO	NO	NO	NO	NO	(B)	(A)	(B)	(B)	NO	
(A) SENSITIVITY (DEPTH ON 2&4)																				
(A) 1. AIR (AND IN FRESH WATER)	5"	8"	5"	6"	6"	5"	7"	7"	8"	8"	8"	8"	8"	8"	8"	8"	8"	8"	8"	NOT FOR COINS
(A) 2. OVER LIGHT MINERAL	5"	6"	5"	6"	6"	5"	7"	7"	8"	8"	8"	8"	8"	8"	8"	8"	8"	8"	8"	NOT FOR COINS
(A) 3. OVER MEDIUM MINERAL	4"	5"	4"	5"	5"	4"	6"	6"	8"	8"	8"	8"	8"	8"	8"	8"	8"	8"	8"	NOT FOR COINS
(A) 4. OVER HEAVY MINERAL	4"	4"	3"	4"	4"	3"	5"	5"	8"	8"	8"	8"	8"	8"	8"	8"	8"	8"	8"	NOT FOR COINS
(A) 5. IN SALT WATER	3"	4"	3"	4"	4"	3"	4"	4"	8"	8"	8"	8"	8"	8"	8"	8"	8"	8"	8"	NOT FOR COINS
COMPLEXTY																				
1. EASY TO USE	X	X	X	X	X	X	X	X	X	X	X	X	X	X	X	X	X	X	X	
2. A LITTLE PRACTICE																				
3. MORE PRACTICE																				
4. A LOT OF PRACTICE																				

(A) APPROXIMATIONS (NOT EXACT MEASUREMENTS) ON U.S. 25 CENT PIECE. LARGER COINS (AND COINS BURIED A LONG TIME) CAN BE DETECTED DEEPER.
 (B) TO 75 FEET
 (C) TO 5 FEET

NOTE: The depth readings listed in this chart are under ideal conditions. For Non-GEB modes the depths you may obtain may vary considerably due to experience, moisture content of the soil, etc.

**WHITE'S IS INVOLVED IN FULL PARTICIPATION WITH . . .
DISTRIBUTOR PROGRAMS . . .**



DISTRIBUTOR SEMINAR HELD JANUARY 1979

White's maintain an in depth involvement with their Distributors. Seminars are held regularly through the year. A constant awareness of newly developed instruments, and release dates to the customers is always coordinated through White's Distributors. Top quality products and service is just one of the many priorities scheduled at the Seminars.

DEALER PROGRAMS . . .

White's Distributors hold seminars for their dealers throughout the year. Both Distributor and Dealer must work close in coordinating information of new products, advertising programs and customer service relations. With new highly technical instrumentation, White's exclusive dealers must keep a constant awareness to better serve YOU, THE CUSTOMER. White's also supports their dealers by being the first major manufacturer to close retail selling at the factory.



From the experience and training a dealer goes through with his Distributor, White's dealer, Jerry Goldstein begins a free metal detector class of how to tune and use your instrument. This class was held in Southern California.

AND TREASURE HUNTS . . .



Annual Sweet Home Hunt, sponsored by the Albany Oregon Metal Detector Club.



Winners of White's metal detectors at Cline's Treasure Hunt in Dayton, Ohio are Richard Bocher of Trotwood, Ohio (left), and Eugene Beverly of Dayton, Ohio (right). Pictured in center is the manager of Cline's.

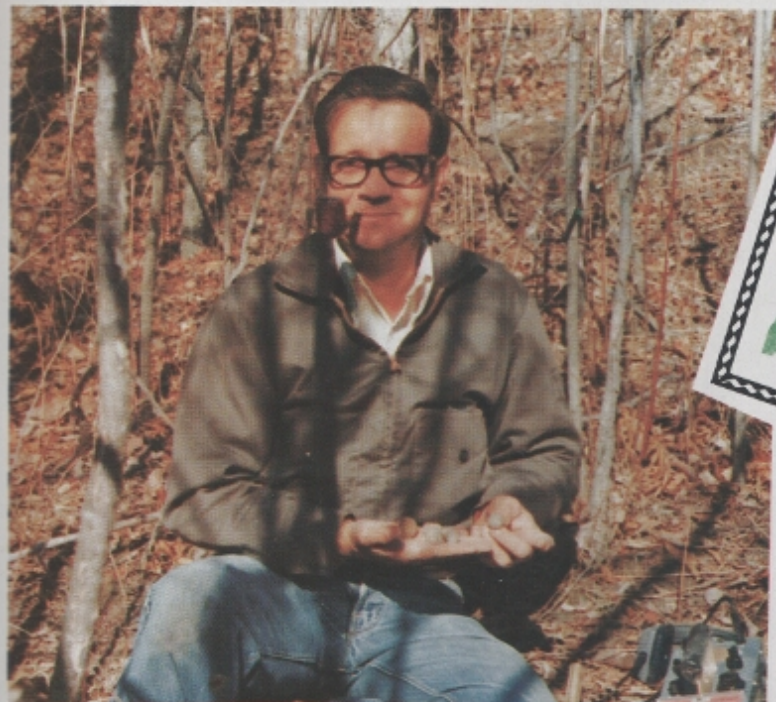


White's Distributor, Jimmy "Sierra" of California hands Mr. J. D. Henderson a COINMASTER 5000/D as he holds another prize (trophy) for winning the men's division in the Cancer Society Treasure Hunt in San Fernando Valley.

White's is continually involved with Treasure Hunts, and other sponsorships such as historical expeditions.

The sport of metal detecting is not only enjoyed by just the metal detector enthusiast, but also by White's Electronics, their Distributors and Dealers as well.

HE'S ONLY SORRY HIS 6000/D WASN'T ON THE MARKET YEARS AGO...



Relics are My Hobby

Once I started into relic hunting I realized that I had to have the best unit that money could buy, due to the depth of the relics. I purchase a White's COINMASTER 5/D from Clevengers in Kansas City. As photos show, I have found a wealth of Civil War relics. After three years with this unit and the trust I had in it, I had to part with it due to the new White's COINMASTER 6000/D that is now on the market.

Please allow me at this time to explain why I had to replace my COIN 5/D. I didn't intend to suggest that it would not hold up under rough conditions. This 5/D has been with me through the worst conditions and half of Georgia. It has performed at its best through snowstorms, heavy rain and the underbrush that it was shoved into. At no time did I have to send this unit in for repairs, but the stem and head were completely worn out. I can truthfully say that I received my money's worth from this unit.

After moving to Trenton, MO, and hearing about the new White's COINMASTER 6000/D, I decided that it would be very nice to have a combination unit so I could detect for coins and also pursue my primary hobby. I didn't believe that such a unit could be made, as it is extremely hard to believe advertising these days.

Last summer I purchased a new 6000/D from R & K Glass, here in Trenton. I am only sorry that this wonderful machine was not on the market years ago, as I have found coins at greater depths than ever, due to the G.E.B. discriminator selector that it has. I was extremely curious as to what it would do in relic hunting, so I took it to Lexington and went over areas that I previously had been in. In maximum G.E.B. position not only did it perform better, but I unearthed 33 mini balls from an area that my dear old 5/D couldn't touch.

At the present time I have large displays of relics in the Grundy County museum, Ray County museum and Lafayette County museum. Also I have a large display at my home here in Trenton. Besides the Civil War relics I have found over 7,000 coins dating back to 1822, numerous rings, including a beautiful diamond ring which my wife wears continuously.

Please convey my many thanks to your wonderful staff that I know you must have in order to produce such wonderful machines. I know that starting from the engineering section all the way down to the assembly line, that each worker is dedicated in his job. It is a wonderful feeling to know that in this day and age you can still purchase your money's worth at a few places.

Sincerely,
Bruce Bartlett
Trenton, Missouri



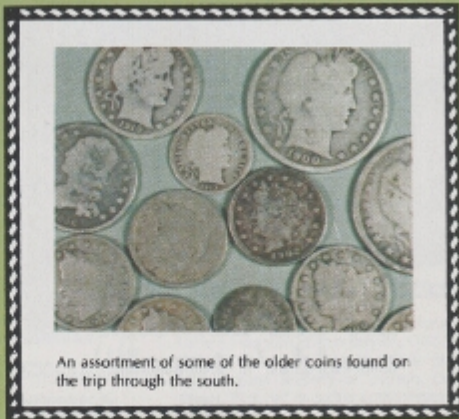
**"found
33 mini balls
from same area,
my old detector
couldn't touch"**



A G.E.B. and it's "loot".

A LIFELONG DREAM COMES TRUE

With a White's HIPMOUNT and COINMASTER 5000/D, Allen Darby's Summer Vacation turned out to be high PROFITS! WORTH THOUSANDS!



An assortment of some of the older coins found on the trip through the south.



This Mexican twenty dollar gold piece was found in a Florida lake.



This is just a part of Allen Darby's collection, the majority of which was found in one summer.



Miscellaneous jewelry and trinkets brought to the surface with a White's.



A handful of rings.



A collection of silver bracelets.



All rings shown here are gold.

On May 1st, I graduated from college with a degree in Education. I was already hired to teach school in the fall and was faced with the dilemma of what to do in the summer.

I did not relish the thought of taking a job at minimum wage and thus decided to fulfill a lifelong dream of treasure hunting for an entire summer. My only problem was that I had sold my White's detector at college when my funds became low. My roommate suggested I get a company to sponsor me in some way. I wrote a letter to White's Electronics and they agreed to sponsor me through Distributor Harry Bodofsky, Metal Detectors of Delaware. I was equipped with the loan of two excellent detectors, a COINMASTER V and a COINMASTER 5000/D G.E.B.

My plan was to travel through several states looking for coins and rings in public or private swimming areas. I have found most treasure hunters will search the dry sand areas of swimming holes, but overlook the water. Since all White's detectors have waterproof loops, they can be submerged up to the control box. The Hipmount COINMASTER V was perfect for this because I could float the control box on an innertube allowing me to work approximately a depth of six feet. I drilled holes in a grain scoop and attached a long handle to it for retrieving my finds.

My college roommate, Dave Thompson, decided to accompany me on this trip. Dave had never treasure hunted before and was fascinated with the thought of finding money in the ground. I sold Dave my old White's COINMASTER IV at school, therefore, he was well equipped.

If you believe in "beginner's luck," I guess Dave must have had it. The first place we stopped in Florida, Dave made an unbelievable find. Upon entering the water I hoped to get off on the "right foot" and discover water that was saturated with coins and jewelry. Unfortunately, someone had been there previously, because the bottom was much too clean. After about forty-five minutes I had found only three coins and Dave had yet to retrieve anything. I told Dave, "We better leave this place and try another because it's a waste of time." Dave was determined to find something and replied to me, "Let's stay just a little longer." Thirty seconds after that conversation, Dave rushed towards me with a glow radiating from his face, or maybe the glow was from the diamond ring he was holding. The ring Dave found was worth about \$400.00. Not bad for your first find.

We decided to head towards Alabama where upon arrival we discovered an old swimming park that seemed too good to be true. I approached the owner to acquire permission. Surprisingly, he finally decided to allow us to hunt just for the day. Upon

entering the water our metal detectors never ceased "beeping." We worked this area for approximately twelve straight hours and our finds were unbelievable. We found 116 rings; 56 of the rings were gold or silver, two of the rings were diamonds. Our coin totals were \$86.67, which included \$37.25 in old silver dating back to 1918. We also found a great deal of assorted medals, watches, and bracelets.

We decided to head North and drove to Ohio, Indiana, and Illinois. We should have stayed South because the further North we traveled the more coinshooting competition we encountered. It appeared most of the northern treasure hunters also like to work the swimming areas. It seems in the South most treasure hunters are avid Civil War relic hunters and often neglect some good coinshooting areas. My advice to any treasure hunter is to do your research first before making a trip of this type. We concluded our seven week trip tired, but satisfied in doing something most treasure hunters just dream about. The memories of our finds, the people we met and the places we traveled will last a lifetime.

I would like to thank Harry Bodofsky and White's for loaning us two excellent metal detectors.

**Allan Darby
Marietta, GA.**

White's donates instruments as prizes to many TV Game Show contestants such as the Price is Right, You Don't Say, and others. Well, don't be surprised if you see a Timex commercial with White's dealer Jerry Goldstein and his wife Sandra, of Finders Keepers of California and a White's COINMASTER 6000/D along the ocean surf.



"Smile Jerry, the camera's rollin!"



Jerry and wife Sandra



"Scene One, Take one".



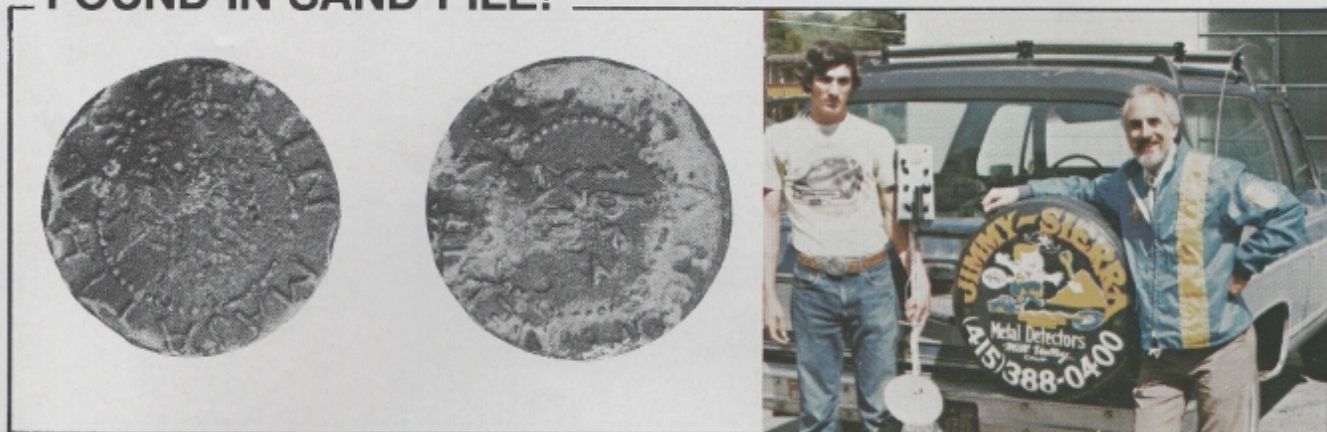
A White's COINMASTER G.E.B. detector was featured on "Sale of the Century," a popular game show on independent British television. Participation in the show is coordinated by Johnny Condon of the "Treasure Hunter's Supply," a London dealer working through the White's distributor in Inverness, Scotland, SAVO Electronics. SAVO Electronics is licensed by White's to produce instruments for Europe.

From Game Shows
to Commercials
WORLD WIDE!

White's participates
in all fields
of media from
coast to coast
and overseas.

WITH WHITE'S, FINDING ONE COIN CAN BE WORTH THOUSANDS!

FOUND IN SAND PILE!



Coinshooters, take note!

The next buzz of your detector could lead to a thrilling discovery, as two Northern Californians (pictured above) can testify.

While combing through some sand brought to Marin County from the Sacramento River Delta, Bill Baxes got a signal from his White's detector, and immediately began digging. He unearthed a spectacular treasure.

The 17-year-old youth had uncovered a silver Willow Tree schilling. The most valuable of the tree types of Colonial currency, (Oak Tree, Pine Tree and Willow Tree)

Dated 1652, it has an estimated value of more than \$11,000.00. It is so rare that its appearance in any condition is a major numismatic event.

Bill Baxes (left) and Jimmy Sierra (right)

Baxes bought his White's detector from Mill Valley pharmacy owner Jim Normandi, who is known among Th'ers of the area as "Jimmy Sierra."

Shortly after his remarkable discovery, Baxes showed the coin to Jimmy and understandably, the two aren't revealing the exact location of the sand pile.

Sierra says, "The general concensus of the experts is that the coin is not a cast replica, but was struck probably between 1653 and 1660, without the authorization of the King of England." Sierra believes the coin was probably brought to the area by a Spaniard who had some sort of contact with an English ship from the colonies.

Jimmy "Sierra" Normandi is now the White's Distributor for California.

\$28,000.00 COIN

This coin displayed at right was found by Leo Bohling in Petaluma, California.

Leo found this coin in an old baseball field which was being torn up to make way for a Library. The field at one time, (1850 to 1860) was a race track.

Leo took his White's and started coin shooting, along with others who were there with the same intentions.

His instrument sounded off and down 7½ inches was a 1849 10 dollar gold piece. It's a privately minted coin from the Oregon City Exchange Company, and only five or six have been found. The Red Book for coins, states the value at \$28,000.00.



GOLD!

A WHITE'S CAN FIND IT!



This large 45 oz. gold nugget shown here was found in Ruby, Alaska in an old gold mining tailing pile. At today's prices, it would be worth \$25,000.00 or more. The largest gold nugget ever found in the State of Washington was 351 grams, located with a White's GOLDMASTER using a 4" Gold Probe.

A White's dealer, Mr. Colin J. Kingsland of Colmare Metal Detectors in Australia found this gold nugget with a White's COINMASTER 5000/D six inches beneath the soil. It was in a patch of highly mineralized ground that the area is renowned for. He has told us every week nuggets of gold are being found with metal detectors. Reports of a 83 oz. has been found plus several other outstanding record weight pieces. Colmare Metal Detectors have been operating for only 12 months and are generally regarded as the states number #1 dealer in metal detectors exclusively for White's Electronics, Inc.

An Australian customer has recently found and sold about \$19,000.00 in gold nuggets! The largest gold nugget pictured here, weighed 11 oz. "These are just the leftovers", says the customer. All these finds were made with a White's COINMASTER G.E.B. HIPMOUNT.



WHITE'S INSTRUMENTS GO UNDERWATER AS WELL AS ON LAND, WITH THE AMPHIBIAN

The AMPHIBIAN will be in a feature length Documentary entitled "NEPTUNES JOURNALS". One of the features is called "The Treasure Chase." The movie will be released by Gold Key Entertainment, a division of Technicolor, produced by Milas Hinshaw Productions, Inc. and narrated by host Bill Burrud. (We've outlined some of the highlights of this fantastic factual adventure.)

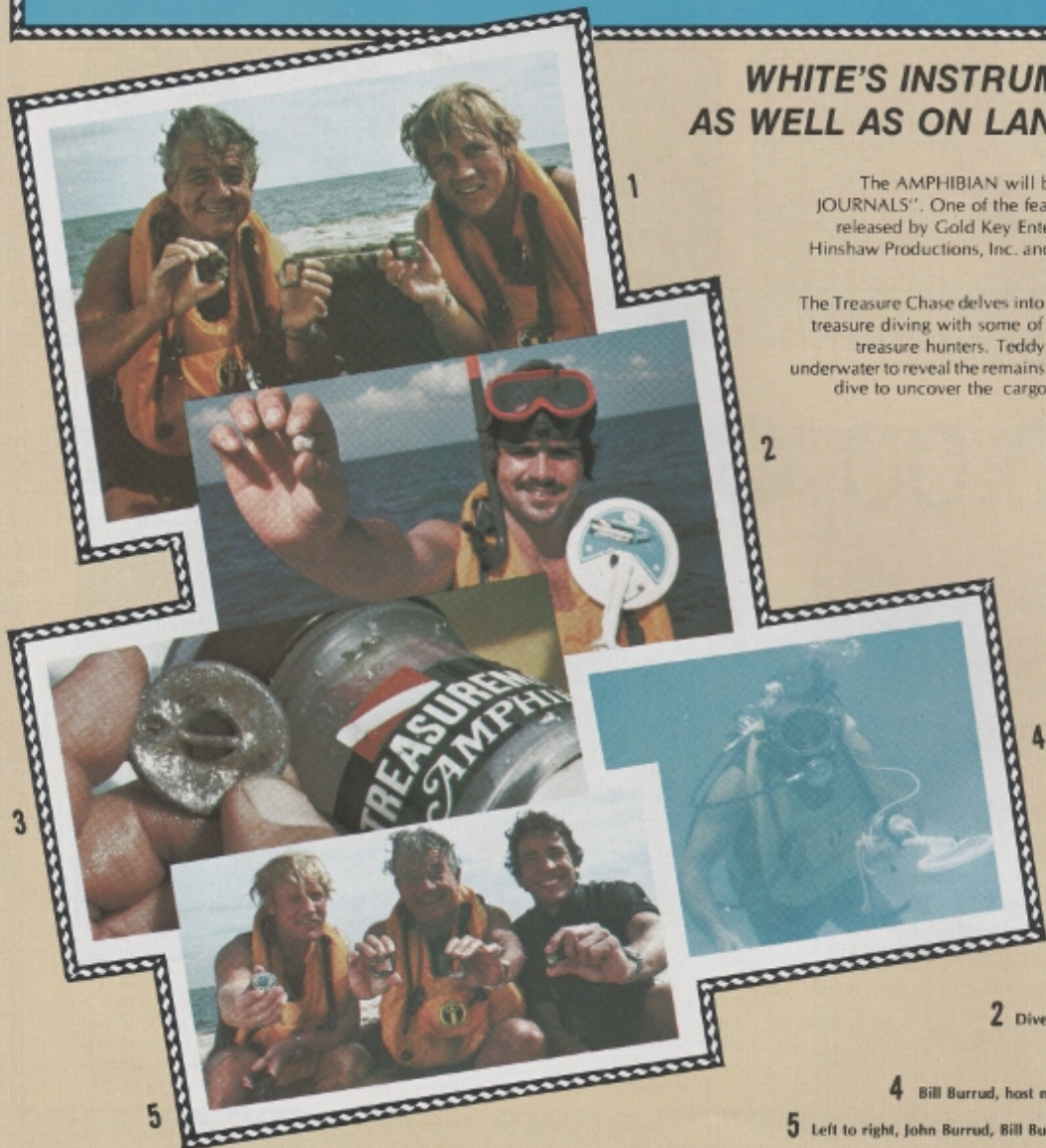
The Treasure Chase delves into the adventurous and often dangerous world of underwater treasure diving with some of America's foremost divers, photographers and successful treasure hunters. Teddy Tucker, king of the treasure hunters, and cameramen go underwater to reveal the remains of a Spanish Galleon. In shark-infested water, cameramen dive to uncover the cargo of a Spanish merchant ship, wrecked on a reef in 1741.

Divers uncover an underwater storehouse of pewter buttons, spools of thread, cuff links, knee buckles, and thousands of brass crucifixes . . . trade goods bound for the new world that never reached their destination.

In Manila Bay, the crew joined professional diver Bill Hogan in search for modern day treasure . . . millions in silver Pesos that were dumped into the deep waters of the bay to prevent their falling into the hands of the invading Japanese in World War II. With the help of former prisoners of war, Hogan salvages several thousand dollars worth of coins, but only a fraction of the millions scattered across the murky bottom of Manila Bay.

Along with the treasure hunting tips from experts in the field of marine archeology, the crewmen will also examine the latest in treasure detection and salvage technology . . . a how to do it primer course for the would-be treasure hunter.

The feature is syndicated, therefore White's has not received air dates of the feature. We hope the movie will be released by late summer or early fall of '79 and we hope all of our readers will be able to see it.



1 "Treasure Case" host Bill Burrud and his son, John display three show buckles recovered from the Spanish wreck.

2 Diver Tom Hinshaw holds musket ball recovered by the AMPHIBIAN

3 Metal button uncovered with the AMPHIBIAN

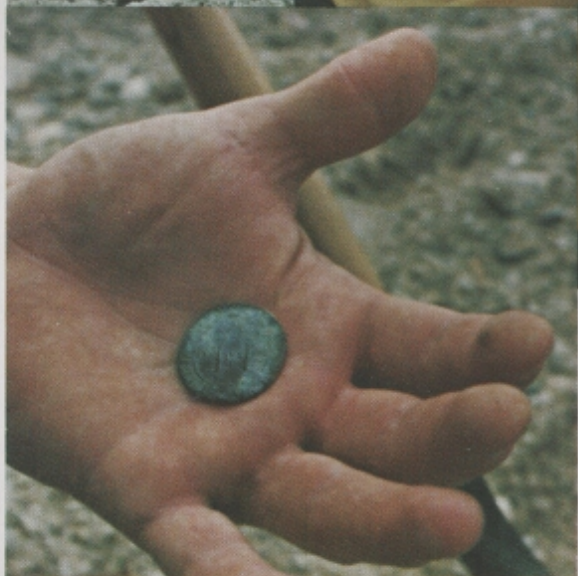
4 Bill Burrud, host narrator of "The Treasure Chase," using the underwater detector.

5 Left to right, John Burrud, Bill Burrud, and cameraman Brian Burton holding artifacts from wreck.

IT ISN'T A FOOTBALL . . . BOB LILLY, FORMER ALL PRO DALLAS COWBOY ENJOYS WHITE'S DETECTOR AND HIS NEW HOBBY!

These photos were taken a few years ago at the South Padre Island on the Texas Gulf coast.

Bob displays a Spanish coin he found with a White's HIPMOUNT. "There are many old Spanish ships that were beached during hurricanes, and that leaves many unexplored areas to search for Spanish coins and relics. Besides staying busy with his ranches and motels in Texas and Mexico, during his spare time, Bob takes his White's HIPMOUNT and coinshoots. Recently, he became the owner of a COINMASTER 5000/D.



Subscribe or pick up one of these Magazines TODAY!

Each issue of these magazines contain information for the Treasure Hunter, Coinshooter, Prospector, or Relic Hunter.

You can keep up with White's current Metal/Mineral Detectors, and read what's going on with Treasure Clubs across the nation.

Keep up on current coin information, and read about what other TH'ers are finding.

Each magazine holds a world of information for the metal detecting hobby.



A "SUPER FANTASTIC" PIECE OF EQUIPMENT IS WHAT THE COINMASTER 6000/D IS CALLED BY GEORGE STEINIGER.

An experienced Treasure Hunter, after trying various other models, expresses the COINMASTER 6000/D as the greatest advancement in metal detector circuitry ever thought possible!

Congratulations to White's Electronics! I have been metal detecting for the past 10 years and presently own four detectors. The first three detectors have all found their share of coins and valuables, but the White's 6000/D has changed the old fashion method and put a new light on detectors, because my area is about depleted of coins. Heavy junk accumulations make it more like work than fun. Out of state relic and coin shooting on my vacations is the only enjoyment left.

I have tried three new models of Discriminators. Testing these detectors on my coin garden, I found they all had the same fault. The scanning head had to be held a given height above the ground. This makes swinging the detector very tiresome and should you raise or lower the head even one inch, you would lose a coin even if it was lying on top of the ground. I gave up on Discriminators, as I would rather dig more than to miss a valuable find.

A friend of mine who used to sell detectors showed me White's pamphlet on the 6000/D. I read only 10 lines and I knew this was the detector I had been looking for. The line that convinced me was: DOES NOT HAVE TO BE HELD AT A CONSTANT HEIGHT ABOVE GROUND.

All I can say about the 6000/D is that it is a "SUPER FANTASTIC" piece of equipment. The greatest advancement in circuitry is something I never thought possible. 95% of all my detecting is done in the Discriminate Mode. No one but no one finds anything after I make a thorough search of an area. I have found a large coffee can of coins and valuables in the 8 weekends that I have had this detector. I average 5 to 6 times

as many coins a day (in areas already searched by many others), than I ever have before.

As I get more familiar with the 6000/D and learn to analyze what it is trying to tell me, my confidence builds and builds. I have found things the 6000/D will do that your instructions do not even mention. I can not describe all of them in words. Most of them are just a feeling I get as I get more familiarized to the different sounds and pitch intensity of various finds. For instance, I can tell a dime 9 out of 10 times and between you and I, I have been finding 1 dime to every 5 pennies which is many times better than I used to do as I consider dimes the hardest coin to find.

I am thinking of retiring in another few years, with the possibility of starting a Treasure Hunting Store. Congratulations to White's on the greatest advancement in circuitry, your COINMASTER 6000/D is a "SUPER FANTASTIC" PIECE OF EQUIPMENT.

George Steiniger
Wallingford, Connecticut



79/80 CATALOG OF MINERAL/METAL DETECTORS

All White's TR-Discriminators, G.E.B. and V.L.F. instruments are covered by U.S. Patents #4030026, #4128803 and Canadian Patent #1038036 or other Pats./Pending as so marked.

ALL PURCHASES MAY BE ATTAINED THROUGH A PARTICIPATING WHITE'S DEALER
CALL TOLL FREE (1-800-547-6911) FACTORY SELLS TO DISTRIBUTORS ONLY



white's electronics, inc.

1011 Pleasant Valley Road
Sweet Home, Oregon 97386

Address Correction Requested
Return Postage Guaranteed

Specialty Dealer Sales & Service
611 LANCASTER N.E.
SALEM, OREGON 97301

Bulk Rate
U.S. POSTAGE PAID
White's Electronics, Inc.