

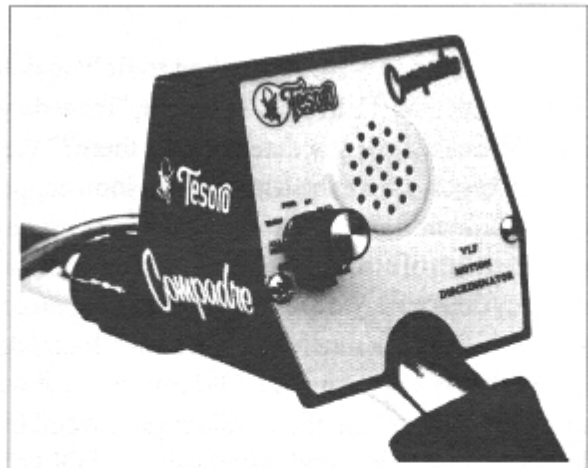


"The Name That Means Treasure"

# Compadre

The Tesoro Compadre was designed with the idea that less is more. This modest machine can do a lot of the same things that its bigger brothers can do. It works great for coin hunting, competition hunting and relic hunting, but it does it without any excess knobs. Switch on the detector and you're working in a silent search, motion all metal mode. The farther you turn the knob, the more discrimination you can bring to bear on those trashy sites.

The Compadre has it all. One knob simplicity for the beginner and high gain circuitry and the famous Tesoro ED-180 discrimination for the advanced user. If one detector can do all of this, maybe less is more.



### FEATURES:

- |                                   |                                 |
|-----------------------------------|---------------------------------|
| <i>Designed for All Ages</i>      | <i>Ultra-lightweight Design</i> |
| <i>VLF 12kHz Frequency</i>        | <i>7" Concentric Coil</i>       |
| <i>Single Knob Simplicity</i>     | <i>3-piece Knockdown Pole</i>   |
| <i>Built-in Mineral Rejection</i> | <i>Lifetime Warranty</i>        |
| <i>Silent Search All Metal</i>    |                                 |
| <i>&amp; Discriminate Modes</i>   |                                 |

## LIFETIME WARRANTY

*Suggested Retail Price*

# \$189<sup>00</sup>

Available only at your Tesoro Authorized Dealer

### **SPECIFICATIONS**

- Operating Frequency ..... 12 kHz
- Searchcoil Size ..... 7 inch diameter
- Searchcoil Type ..... Round concentric
- Searchcoil Cable Length ..... Approx. 4 foot\*
- Audio Frequency ..... Approx. 600 Hz
- Audio Output .... 1½ inch speaker and headphone jack
- Headphone Compatibility ..... ¼ inch stereo plug
- Weight ..... 2.3 pounds (may vary slightly)
- Battery Requirement ..... One 9 volt DC (alkaline)
- Battery Life ..... 10-20 hours (typical)
- Optimum Temperature Range ..... 30° F to 100° F
- Optimum Humidity Range ..... 0 to 75% R.H.
- Operating Modes ..... Silent Search Discriminate

\*Searchcoil cable is permanently attached to housing.

*Tesoro Electronics, Inc. reserves the right to modify or improve the design without further notice.*

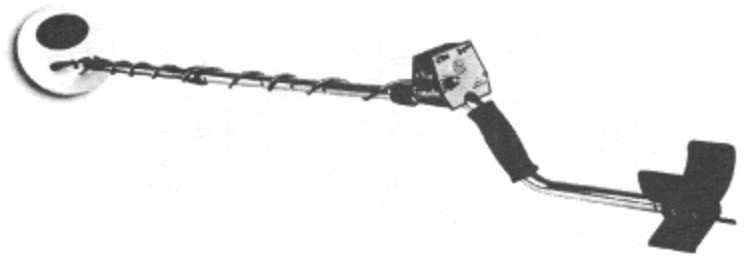
*Your Tesoro Authorized Dealer*



"The Name That Means Treasure"

Tesoro Electronics, INC.  
715 White Spar Rd.  
Prescott, AZ 86303  
(520) 771-2646

# Compadre



## Recess at Lava Rock School—Bend, OR

by Les and Carol Berg

When we were first asked to field test the new COMPADRE by TESORO, I thought, "How do you test one of the easiest of any detectors out there?" We live in Bend, Oregon where the landscape is snowcapped Cascade Mountains and lava rocks. There are rocks everywhere and lots of black, mineralized sand, which can throw off many detectors. We took the Compadre approximately 500 yards from our ranch house to a rock foundation of a school that is 100 years old. Old timers say it was lava rock on the lower half of the building and wood frame on the upper half. Our friends say their "Aunt Olive" taught there in the 40's. She was a married woman and the city of Bend didn't allow married teachers to teach in the city schools (their place was at home), but she was allowed to teach in the rural school district. The owner of the property gave us permission to hunt the site. Getting permission is so important and part of the metal detector's "code of ethics." He told us that the one room school was still standing until the 1960's. When the owner came back from a trip, all that was left was the stone foundation (barnwood thieves). The area is littered with lots of old nails, barbed wire and cans.

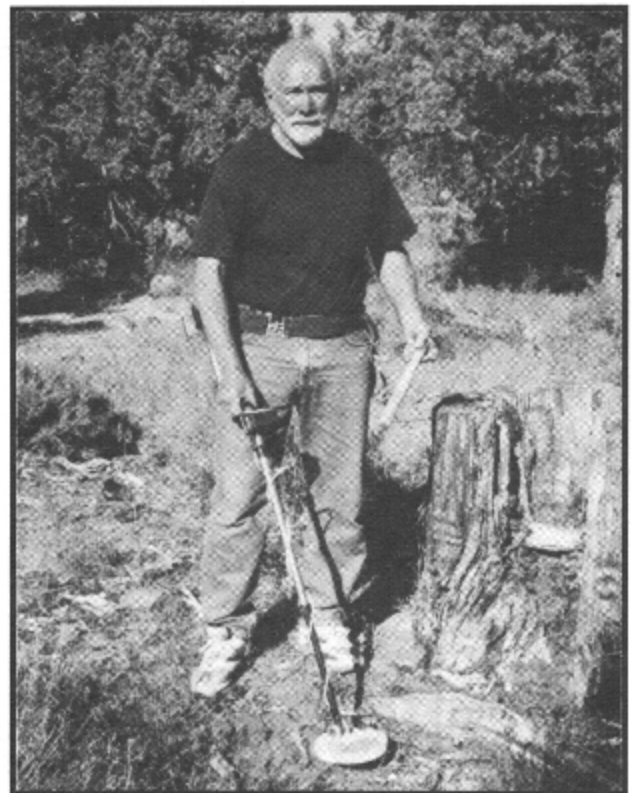
So, here we go field testing the easy, one knob, turn-on-and-go Compadre. After turning on the detector and hearing the test beep, you are in the first mode of All Metal. Targets will be found depending on the mineralization in the ground from 3-9". Carol didn't believe the 9" target depth and Les reassured her with a tape measure.

Les used a dime for the target. After successfully mastering that mode, turn the same (and only) knob to the six other settings: Iron, Foil, 5¢, Pull Tab, 1¢ Zinc, Max. These settings are general location settings. A slightly higher or lower setting might be needed to totally discriminate out a target. You do lose the targets of small gold and silver rings plus nickels if you discriminate out the pull tabs.

The Compadre is the easiest of any detector out there. Its one knob control and superb discrimination ability makes it a great coin and relic machine. The Compadre's lightweight  $\mu$ Max design allows for all day hunting. The one knob simplicity allows children to easily operate the Compadre. We have had 4-5 year olds using it with great success! My opinion is that the Compadre will be high on the top seller list in the year 2000 and beyond.



"The Name That Means Treasure"



Les Berg with Compadre.