

GARRETT

METAL DETECTORS

S i n c e 1 9 6 4

The most trusted and proven treasure hunting products you can own

2005
Buyer's Guide



Meeting the Highest Standards of Metal Detection

Charles Garrett, President & Co-Founder



Charles and Eleanor Garrett

An Extraordinary Adventure.

What an extraordinary adventure Eleanor and I have experienced over the past 40 years. What started out of our garage in 1964 has grown into an international company of which we are very proud. We could never have imagined the impressive growth our company would experience when we began building detectors over forty years ago.

The Highest Standards of Metal Detection.



Of course, over the years there's been a great demand for metal detection products in markets other than treasure hunting. Since 1984, we've supplied walk-through and hand-held metal detection products and have developed an extensive checkpoint training program for security professionals worldwide. Garrett has supplied metal detectors to most of the Olympic Games since 1984, as well as the Academy Awards, Emmy Awards, Super Bowl Games, the World Cup and the list continues on and on.

Over three years ago, our engineering team developed advanced pinpoint metal detection technology for the U.S. Transportation Security Administration (T.S.A.), which has created the most stringent standards in metal detection our industry has ever seen. Garrett is currently the exclusive supplier of hand-held scanners and the PD 6500i™ (one of only three approved models of walk-through detectors) for U.S. airports.

Two Divisions. One Company.



The technology our engineers have developed, which has made us the leader of the security industry, is the same technology you'll find in the products you see in this catalog.

That's right, when you treasure hunt with a Garrett detector, you're hunting with the same level of technology and performance that's trusted worldwide by governments, private corporations and airports, as well as organizations like the Olympic Games for their security needs. No other hobby metal detector manufacturer meets the same high standards of metal detection that we do, or can give you the reassurance that you're getting the highest performing product possible. Don't settle for anything less.



Heart and Soul.

The heart and soul of Garrett has always been treasure hunting. That's why we offer the most advanced metal detection technology and features that make your treasure hunting more fun and rewarding. From our patented Graphic Target Imaging and Analyzer technology that gives you True Size, Depth and ID to our highly acclaimed PROformance searchcoils, you can trust Garrett detectors to give you professional results and years of rewarding treasure hunting.

Charles Garrett



Mr. Garrett:

"I bought the GTI 2500 and my buddy bought your competitor's detector. I borrowed his detector and being a retired electronic tech, I thought I'd test the two side by side. I understand the electronics of both machines, and both are easy to operate. I will have to say though, your competitor had me digging trash (9 pieces today) while the GTI 2500 had me digging only coins. I've tested this unit twice now and the GTI 2500 blows away the competition hands down. I'm hoping to get the chance to test your new 1350, if it's anything like the 2500, it's definitely a winner. All I can say to treasure hunters is stop digging trash guys go with a winner, the GTI 2500. Thanks Garrett, for a great machine!"

Jim Johnson
Leslie, Missouri

P.S. By the way, I talked my uncle into the GTI 1500 and he hasn't had to dig trash either!



Mr. Garrett:

"I started using my Sea Hunter this spring and bang, bang, bang, I found one coin after another! I've found loads and loads with this detector! Just in the past few months I've found tons of quarters with the Sea Hunter. Once you get the hang of it, it's really easy to use. And I've had such great success that I decided to add another high-tech Garrett detector to my collection. So, I recently purchased your new GTP 1350! What a great detector that is! I even have a GTAx 400 on the way! I love your detectors and am impressed with Garrett's dedication to building detectors that really find treasure! I would never buy anything but a Garrett metal detector!"

Paul J. Vignone, Jr.
Reading, Pennsylvania



Mr. Garrett:

"I've been treasure hunting for over 30 years. About two months ago, I had to return one of your competitor's detectors because it simply wasn't working for me. I really enjoy coin shooting and like to hunt in parks, baseball diamonds, etc., so my dealer recommended the GTAx 550. I couldn't have picked a better detector! I no sooner turned it on than I began finding coin after coin. Unlike your competitors, there are no settings to experiment with, just turn it on and go. And it's so accurate. When the GTAx tells me I've found a quarter, it's a quarter. In just the past six weeks I've found between 500 and 600 coins. And your electronic pinpoint is such a great feature. Using the old crisscross method doesn't compare to the accuracy of the GTAx's pinpoint mode. The 550 is the best detector I've used and is all I need!"

Joe Pease
East Liverpool, Ohio



Mr. Garrett:

"I consider my self a very lucky man, because I had the good fortune to be able to use the first Prototype *Infinium LS* detector that was sent over here for testing. On the Victorian goldfields on the second day of use, I detected two small nuggets of gold with the *Infinium*. I found it very easy to use. They were the first gold nuggets ever to be found in the world with this new Garrett detector." (See photo).

Eric Clarke
South Australia



Inside this Catalog

Graphic Target Imaging™	
GTI 2500	6
GTI 1500	8
Graphic Target Profiling™ - NEW!	
GTP 1350	10
Graphic Target Analyzing™	
GTAx 550	12
ACE™ Series - NEW!	
ACE 250	14
ACE 150	15
Specialty Detectors	
<i>Infinium LS™</i>	
(Multiple Frequency)	16
Master Hunter <i>CX Plus™</i>	
(Caches)	18
Sea Hunter <i>Mark II™</i>	
(Submersible)	19
Scorpion <i>Gold Stinger™</i>	
(Prospecting)	20
Patented, Exclusive Features	4
Imaging and GTA Technology	13
Gold Pans	21
Searchcoils	22
RAM Treasure Hunting Books	23
Videos	24
Accessories	25

Caution!

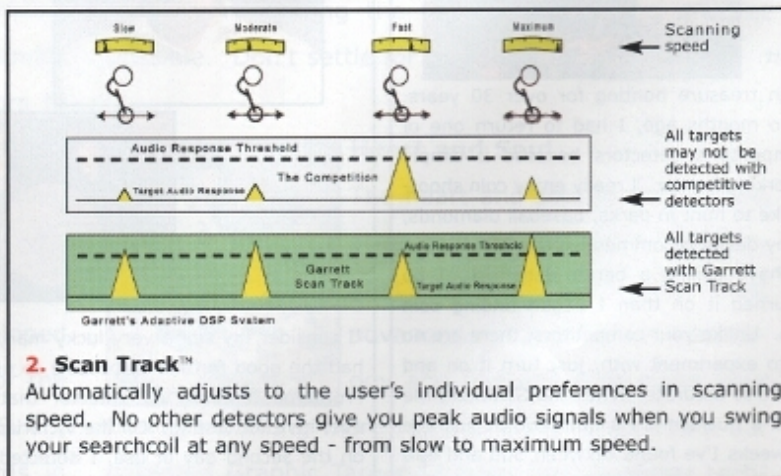
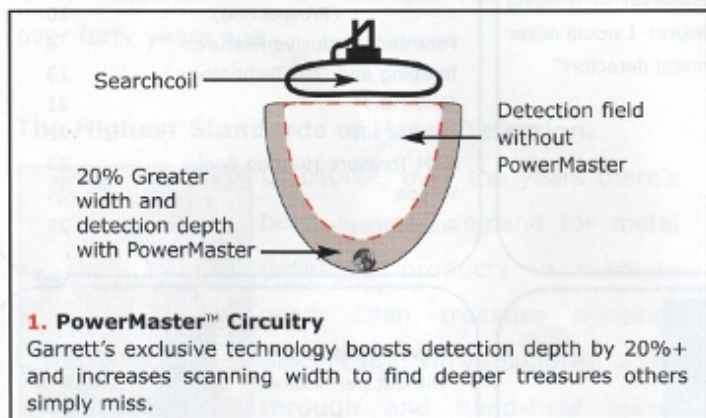
- Never trespass or hunt on private property without permission.
- Avoid areas where pipelines or electric lines may be buried.
- National and state parks / monuments, etc. are absolutely "off limits".
- Deepseeking detectors can detect concealed pipes, wiring and other potentially dangerous material. When those are located, the proper authorities should be notified.
- Do not hunt in a military zone where bombs or other explosives may be buried.
- Do not disturb any pipeline, particularly if it could be carrying flammable gas or liquid.
- Use reasonable caution in digging toward any target, particularly in areas where you are uncertain of the ground conditions.
- If you are unsure if you can use your metal detector in any area, seek permission from the proper authorities.

GARRETT'S

10 Patented, Exclusive

Features

You Can ONLY Find on the GTI 2500



3. Treasure Hound™ Depth Multiplier

With pinpointing capabilities, this dual searchcoil 2-box accessory offers greater detection depth than any other searchcoil currently available (shown at left). It has built-in EagleEye technology for small cache hunting and ultra precise pinpointing.

GTI 2500™

\$1099.95

PN 1120570

Includes 9.5" Imaging Submersible Searchcoil



"My GTI 2500 is the product of over 40 years of metal detection research and design and sets the highest standards in treasure hunting."

Charles Garrett



U.S. quarter at 6-inches shown on TreasureVision Screen



Features

- Graphic Target Imaging (GTI), True Target Size & Depth
- Graphic Target Analyzer (GTA), Target ID Cursor
- All Metal Deepseeking Mode
- PowerMaster Circuitry (20% more depth)
- Discrimination: GTA Accept / Reject Notch
- Audio Tone ID
- Pinpointing, with True Size and Depth Measurement
- Digital Signal Processor (DSP)
- Microprocessor Controlled
- Salt Elimination Mode
- Ground Balance, Manually Adjustable
- Ground Balance, Automatic Ground Tracking
- FastTrack Ground Balance (All Metal Mode)
- Coin Alert Belltone Audio
- ScanTrack
- Hip Mount Battery Pack
- TreasureTalk
- Frequency, Adjustable
- Audio Threshold, Adjustable
- Volume Control, Adjustable
- Sensitivity / Depth Adjustment
- LCD Screen Backlit, Shows Target ID and Settings
- Headphone Jack
- Speaker
- Last Mode Switching
- Last Target Recall
- Surface Elimination, Adjustable
- Touchpad Controls with One -Touch Operation
- Surface Mount PC Board Technology

Specifications

- Length: 40" to 51" (1.01m - 1.29m)
- Weight: 4.6 lbs. (2.1 kgs.)
- Detection Frequency - 7.2 KHz, adjustable
- 8 AA battery operation (batteries included)
- 2 year warranty

Modes

- Non-Motion: Deepseeking All Metal with Visual Target ID and Target Imaging
- Motion: Coins, Jewelry, Relics, Zero, Custom Discrimination modes with Visual Target ID and Target Imaging
- Imaging (Pinpoint): Non-motion detection for precise target locating with visual Target Imaging

Settings

- Sensitivity
- Threshold
- Detection Frequency
- Volume
- Tone
- Full Range Multi - Notch Discrimination

The GTI 2500 comes with a 9.5" Imaging searchcoil (shown) and instructional video (optional DVD available, see pg. 24). *Instrucciones Españolas disponibles.*

For more information about the GTI 2500 and related accessories see the following pages:

- 4 - Ten GTI 2500 exclusive features and patented technologies defined
- 13 - True Target Size and Depth Technology
- 22 - Searchcoils
- 26 - Detector comparison table
- 27 - Applications chart

GTI 1500™

**NOW ONLY
\$799.95**



"Do you want to find coins, and lots of them? Then you need my proven GTI 1500. With its One-Touch operation, you can start finding coins the moment you turn it on! This instant start feature is unsurpassed in the industry!"

Charles Garrett

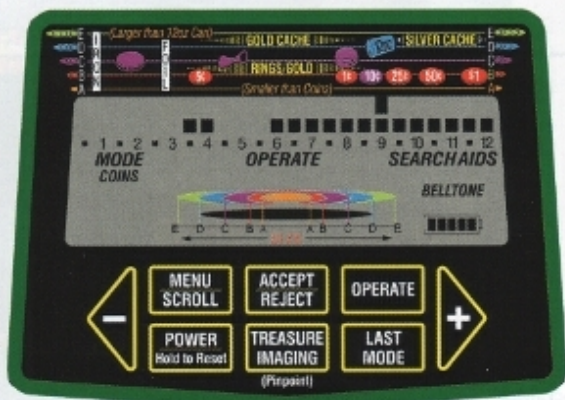
PN 1121070

Includes 9.5" Imaging Submersible Searchcoil



Proven Performance for LESS!

Aluminum can shown on TreasureVision Screen. The depth scale will show its accurate depth.



Features

- Graphic Target Imaging (GTI), True Target Size & Depth
- Graphic Target Analyzer (GTA), Target ID Cursor
- PowerMaster Circuitry (20% more depth)
- Discrimination: GTA Accept / Reject Notch
- Audio Tone ID
- Pinpointing, with True Size and Depth Measurement
- Digital Signal Processor (DSP)
- Microprocessor Controlled
- Salt Elimination Mode
- Ground Balance, Automatic Ground Tracking in Discrimination Mode
- Coin Alert Belltone Audio
- ScanTrack
- Hip Mount Battery Pack
- Frequency, Adjustable
- Audio Threshold, Adjustable
- Volume Control, Adjustable
- Sensitivity / Depth Adjustment
- LCD Screen Backlit, Shows Target ID and Settings
- Headphone Jack
- Speaker
- Last Mode Switching
- Surface Mount PC Board Technology
- Touchpad Controls with One - Touch Operation

Specifications

- Length: 40" to 51" (1.01m - 1.29m)
- Weight: 4.1 lbs. (1.9 kgs.)
- Detection Frequency - 7.2 kHz, adjustable
- 8 AA battery operation (batteries included)
- 2 year warranty

Modes

- Motion: Coins, Jewelry, Relics, Zero and Custom Discrimination mode with Visual Target ID
- Imaging (Pinpoint): Non-motion detection for precise target locating with visual Target Imaging

Settings

- Sensitivity
- Threshold
- Detection Frequency
- Volume
- Tone
- Full Range Multi-Notch Discrimination

The GTI 1500 comes with a 9.5" Imaging submersible searchcoil and instructional video.

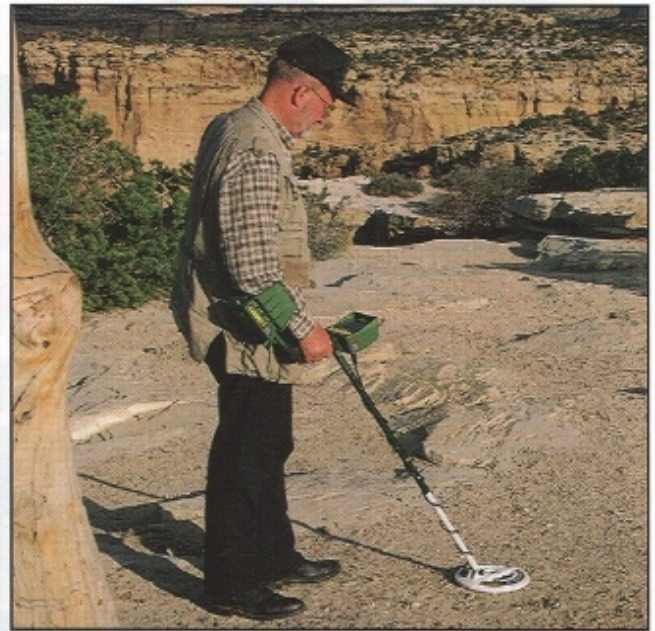
For more information about the GTI 1500 and related accessories see the following pages:

- 13 - True Target Size and Depth Technology
- 22 - Searchcoils
- 25 - Accessories
- 26 - Detector comparison table
- 27 - Applications chart



The GTI 2500 is the highest performing metal detector you can own. This inspiring, top-of-the-line machine is loaded with outstanding features like PowerMaster, ScanTrack, TreasureTalk and TreasureVison as well as Garrett's exclusive Graphic Target Analyzing (GTA) technology and our patented

Graphic Target Imaging (GTI) LCD screen, plus our high-performance, true-Digital Signal Processing (DSP)! The 2500 visually identifies the True Size and Depth of targets such as coins, pull tabs, bottle caps, drink cans and large cache-sized treasures. And with its colorful and easy-to-read LCD graphics, you get visual identification of targets at unsurpassed depths and accuracy. Only the GTI 2500 gives you all the information you need about every target before you dig - which greatly increases your treasure hunting efficiency and success!



Mr. Garrett:

I've hunted with the GTI 2500 for many years and simply can't imagine using another detector. The 2500 is simple to use and has many more features than other detectors, so I get more information about my targets before I dig them. And the depth of the 2500 is outstanding. Even pinpointing very small, deep targets is no trouble! And the LCD backlight lets me hunt when it's dark and everybody else has gone home. I tell my friends that if they don't FIND ANYTHING with the 2500 they should change hobbies - maybe go fishing!

Berlingieri Franco
Houthalen-Oost, Belgium

Optional Searchcoils

A. 10x14" Power DD - Use in areas with moderate to heavily mineralized soils. 2217300

B. 5x10" DD Scorcher - Use it to find smaller targets (e.g. tiny gold nuggets) in moderate to heavily mineralized soils, such as when prospecting. 2219800

C. 12.5" Imaging - Gives you True target Size and Depth when cache and relic hunting. 2220000

D. 12.5" Scorcher - Use for deepseeking operation such as cache or relic hunting. 2219600

E. 4.5" Scorcher - Use to find smaller, shallower targets in trashy or confined areas. 2219700

F. Treasure Hound EagleEye - Find larger targets at 2x the depth of conventional coils. 1611800



GTI 2500 PRO Package

\$1399.95 - 1120580

Our special GTI 2500 PRO Package includes the GTI 2500 Detector with 9.5" Imaging Searchcoil PLUS our 12.5" Imaging Searchcoil, Garrett Headphones AND Garrett Supreme GTI Case! A bonus offer worth \$379.85!



GTI 1500™

**NOW ONLY
\$799.95**



"Do you want to find coins, and lots of them? Then you need my proven GTI 1500. With its One-Touch operation, you can start finding coins the moment you turn it on! This instant start feature is unsurpassed in the industry!"

Charles Garrett

PN 1121070

Includes 9.5" Imaging Submersible Searchcoil



Proven Performance for LESS!

Aluminum can shown on TreasureVision Screen. The depth scale will show its accurate depth.

Features

- Graphic Target Imaging (GTI), True Target Size & Depth
- Graphic Target Analyzer (GTA), Target ID Cursor
- PowerMaster Circuitry (20% more depth)
- Discrimination: GTA Accept / Reject Notch
- Audio Tone ID
- Pinpointing, with True Size and Depth Measurement
- Digital Signal Processor (DSP)

- Microprocessor Controlled
- Salt Elimination Mode
- Ground Balance, Automatic Ground Tracking in Discrimination Mode
- Coin Alert Belltone Audio
- ScanTrack
- Hip Mount Battery Pack
- Frequency, Adjustable
- Audio Threshold, Adjustable
- Volume Control, Adjustable

- Sensitivity / Depth Adjustment
- LCD Screen Backlit, Shows Target ID and Settings
- Headphone Jack
- Speaker
- Last Mode Switching
- Surface Mount PC Board Technology
- Touchpad Controls with One - Touch Operation

Specifications

- Length: 40" to 51" (1.01m - 1.29m)
- Weight: 4.1 lbs. (1.9 kgs.)
- Detection Frequency - 7.2 kHz, adjustable
- 8 AA battery operation (batteries included)
- 2 year warranty

Modes

- Motion: Coins, Jewelry, Relics, Zero and Custom Discrimination mode with Visual Target ID
- Imaging (Pinpoint): Non-motion detection for precise target locating with visual Target Imaging

Settings

- Sensitivity
- Threshold
- Detection Frequency
- Volume
- Tone
- Full Range Multi-Notch Discrimination

The GTI 1500 comes with a 9.5" Imaging submersible searchcoil and instructional video.

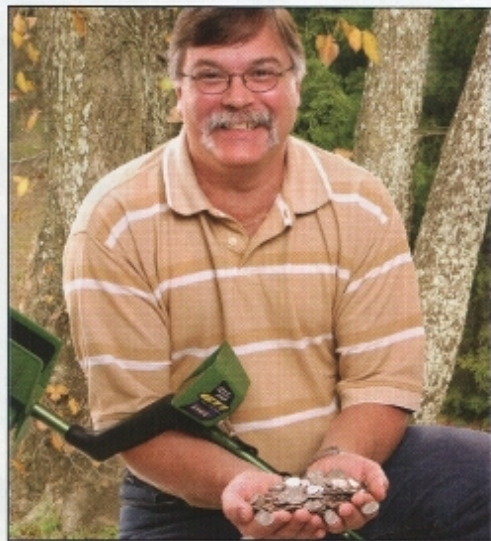
For more information about the GTI 1500 and related accessories see the following pages:

- 13 - True Target Size and Depth Technology
- 22 - Searchcoils
- 25 - Accessories
- 26 - Detector comparison table
- 27 - Applications chart



A treasure hunter's success using "Brand X", without Garrett Imaging he found cans.

Find
10x
MORE
coins
with the
1500!



A treasure hunter's success using a GTI 1500, with Garrett Imaging he found coins!

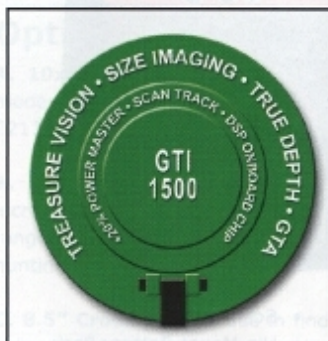
Mr. Garrett:

Our daughter was given a "Black Hills Gold" ring for her confirmation in 1971. She lost the ring that Fall while playing in the leaves in the yard and later that day discovered she no longer had the ring on her finger. Being only 11 years old at the time, she felt very bad and, of course, did not tell her parents she lost the ring. This summer, 33 years later, I was combing the yard with my GTI 1500 and found the ring! The ring and daughter were reunited!

Edward Petrik
Edinburg, Texas



Medium & Custom Treasures (Field Tester)



Find 10 Times More Coins!

Want to find old coins, new coins, rare coins, gold coins, silver coins and coin after coin after coin? Then take the GTI 1500 on your next coin hunting expedition! The 1500 is the world's foremost coin shooter and is loaded with much of the same exciting technology found on the elite GTI 2500. With instant feedback capabilities, the GTI 1500 indicates the kind of target you've detected as well as its size, depth and pinpoint location. With the 1500 you can know if your target is a coin or drink can, which saves you hours of useless digging! Use your time wisely with the 1500 and find up to 10 times more coins!

With the 1500 you can know if your target is a coin or drink can, which saves you hours of useless digging! Use your time wisely with the 1500 and find up to 10 times more coins!

Optional Searchcoils

- A. 10x14" Power DD** - Use in areas with moderate to heavily mineralized soils. 2217300
- B. 5x10" DD Scorcher** - Use it to find smaller targets (e.g. tiny gold nuggets) in moderate to heavily mineralized soils, such as when prospecting. 2219800
- C. 12.5 Imaging** - Gives you True Depth and Size when cache and relic hunting. 2220000
- D. 12.5" Scorcher** - Use for deepseeking operation such as cache or relic hunting. 2219600
- E. 4.5" Scorcher** - Use to find smaller, shallower targets in trashy or confined areas. 2219700

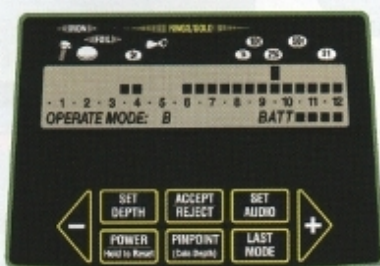


GTA⁵⁵⁰™



See Pg 5 for more information about Garrett's Target Accept/Reject Notch Discrimination technology.

Target ID: Probable U.S. quarter. Coin depth will be measured during target pinpointing.



Another Industry First from Garrett! Our Graphic Target Profiling 1350 based machine is packed with features and technology that no other side is the only detector in its class. (Large of a target.)



\$499.95

PN 1151830
Includes the 7x10" RHINO TOUGH PROformance Submersible Searchcoil



"The high tech performance and accuracy we've packed into our GTA⁵⁵⁰ takes the guesswork out of target ID and makes coin hunting simple and very rewarding."

Charles Barnett



Features

- Graphic Target Analyzer (GTA), Target ID Cursor
- Discrimination: GTA Accept / Reject Notch
- Pinpointing, Coin Depth Measurement
- Microprocessor Controlled
- Hip Mount Battery Pack
- Audio Threshold, Adjustable
- Sensitivity / Depth, Adjustment
- LCD, Shows Target ID and Settings
- Headphone Jack
- Speaker
- Last Mode Switching
- Surface Mount PC Board Technology
- Touchpad Controls with One - Touch Operation

Specifications

- Length: 40" to 51" (1.01m - 1.29m)
- Weight: 3.9 lbs. (1.8 kgs.)
- Frequency Detection - 7.0 kHz
- 8 AA battery operation (batteries included)

Modes

- Motion A: Zero Discrimination
- Motion B: Coins, Discrimination (default) with Visual Target ID
- Pinpoint: Non motion detection for precise target locating with coin depth indication

Settings

- Sensitivity / Depth
- Threshold
- Full Range Multi-Notch Discrimination

The GTA⁵⁵⁰ comes with a 7x10" PROformance Elliptical Searchcoil and instructional video

For more information about the GTA⁵⁵⁰ and related accessories see the following pages:

- 22 - Searchcoils
- 25 - Accessories
- 26 - Detector comparison table
- 27 - Applications chart

Optional Searchcoils

A. 10x14" DD - Use in areas with moderate to heavily mineralized soils. 2217200

B. 12.5" Crossfire II - Use to increase detection depth for a broad range of targets in a broad range of hunting conditions. 2218400

C. 8.5" Crossfire II - Use in finding a broad range of targets in a broad range of hunting conditions. 2217500

D. 4.5" Crossfire II - Use when searching for small, shallow targets in trashy or tight places. 2218800



The GTA⁵⁵⁰'s impressive GTA technology over the past 10 years has gained the attention of treasure hunters around the world. It's a proven machine that has plenty of the features and options that make treasure hunting far more rewarding. Its microprocessor-based Graphic Target Analyzer (GTA) technology reveals a target's probable identity with precision and ease. And, the 550 comes with our NEW 7x10" Elliptical PROformance searchcoil that gives you enhanced durability and strength greater than other detectors in its class, and allows you to detect deeper and cover more ground per sweep.

Target Profiling - Another Industry First From Garrett!

Introducing Garrett's ALL NEW Graphic Target Profiling 1350 detector! This powerful, DSP-based machine is packed with the same exciting GTI and GTA features and technology that you find in Garrett's elite detectors and is the only detector in its class to identify the size (Small, Medium, Large) of a target. This new, dynamic target profiling information reveals a target's identity and size so you dig less trash and considerably more treasure. The GTP 1350 comes standard with Garrett's new RHINO TOUGH 7x10" **PROformance** Elliptical searchcoil, which means you search deeper and cover more ground per sweep than with traditional coils. The GTP 1350 is the highest performing, deepest seeking and most advanced metal detector in its price range. If you're serious about treasure hunting, you need the GTP 1350. Start hunting with the 1350 today and discover why GTP treasure hunters are saying "you won't be disappointed."



"In the time I had to field test the 1350, it served me well and harvested an amazing number of good targets for such a short period. I used it in a variety of locations, and it impressed me in a number of ways when I took it to three parks, a college campus and a saltwater beach...Charles Garrett continues producing better machines with built-in user friendliness...(the GTP) is a breakthrough of technology in that it is the first detector in its class to make target sizing available...most of all, I like the GTP 1350 because it found a tremendous amount of treasure for me in a short period of time while I enjoyed every minute."

Ben Myers

Western & Eastern Treasures (Field Tester)

Optional Searchcoils

A. 10x14" DD - Use in areas with moderate to heavily mineralized soils. 2217200

B. 12.5" Crossfire II - Use to increase detection depth for a broad range of targets in a broad range of hunting conditions. 2218400

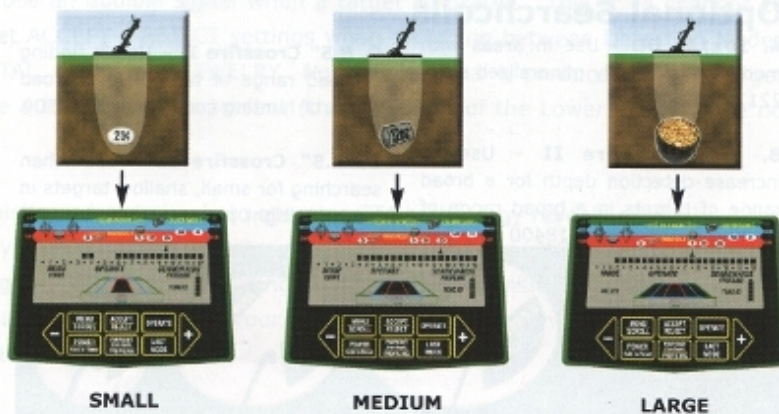
C. 8.5" Crossfire II - Use in finding a broad range of targets in a broad range of hunting conditions. 2217500

D. 4.5" Crossfire II - Use when searching for small, shallow targets in trashy or tight places. 2218800



AMAZING PERFORMANCE!

Know the SIZE of your target before you dig!



GTA^X™



See Pg 5 for more information about Garrett's Target Accept/Reject Notch Discrimination technology.

Target ID: Probable U.S. quarter. Coin depth will be measured during target pinpointing.



Features

- Graphic Target Analyzer (GTA), Target ID Cursor
- Discrimination: GTA Accept / Reject Notch
- Pinpointing, Coin Depth Measurement
- Microprocessor Controlled
- Hip Mount Battery Pack
- Audio Threshold, Adjustable
- Sensitivity / Depth, Adjustment
- LCD, Shows Target ID and Settings
- Headphone Jack
- Speaker
- Last Mode Switching
- Surface Mount PC Board Technology
- Touchpad Controls with One - Touch Operation

Specifications

- Length: 40" to 51" (1.01m - 1.29m)
- Weight: 3.9 lbs. (1.8 kgs.)
- Frequency Detection - 7.0 kHz
- 8 AA battery operation (batteries included)

Modes

- Motion A: Zero Discrimination
- Motion B: Coins, Discrimination (default) with Visual Target ID
- Pinpoint: Non motion detection for precise target locating with coin depth indication

Settings

- Sensitivity / Depth
- Threshold
- Full Range Multi-Notch Discrimination

Optional Searchcoils

A. 10x14" DD - Use in areas with moderate to heavily mineralized soils. 2217200

B. 12.5" Crossfire II - Use to increase detection depth for a broad range of targets in a broad range of hunting conditions. 2218400

C. 8.5" Crossfire II - Use in finding a broad range of targets in a broad range of hunting conditions. 2217500

D. 4.5" Crossfire II - Use when searching for small, shallow targets in trashy or tight places. 2218800



\$499.95

PN 1151830

Includes the 7x10"

RHINO TOUGH

PROformance

Submersible Searchcoil



"The high tech performance and accuracy we've packed into our GTA^X 550 takes the guesswork out of target ID and makes coin hunting simple and very rewarding."

Charles Garrett



The GTA^X 550 comes with a 7x10" **PROformance** Elliptical Searchcoil and instructional video

For more information about the GTA^X 550 and related accessories see the following pages:

- 22 - Searchcoils
- 25 - Accessories
- 26 - Detector comparison table
- 27 - Applications chart

The GTA^X 550's impressive GTA technology over the past 10 years has gained the attention of treasure hunters around the world. It's a proven machine that has plenty of the features and options that make treasure hunting far more rewarding. Its microprocessor-based Graphic Target Analyzer (GTA) technology reveals a target's probable identity with precision and ease. And, the 550 comes with our NEW 7x10" Elliptical PROformance searchcoil that gives you enhanced durability and strength greater than other detectors in its class, and allows you to detect deeper and cover more ground per sweep.

Garrett's True Size & Depth Technology Eliminates the Guesswork!

Garrett's patented Imaging technology eliminates the guesswork in treasure hunting. What exactly is Imaging technology? It's a combination of TRUE Size and Depth readings. You see, most detectors only offer a basic, estimated coin-depth reading, which is only accurate if your target is the size of a coin. Plus, this coin depth measuring technique is the equivalent of having one eye closed, which restricts your field of vision and limits your overall depth perception. Garrett's True Depth, however, is made possible with additional technology that offers added depth perception, much like having two eyes open. True Size is obtained in much the same way as True Depth. Additional receivers, within a metal detector, add multiple dimensions to target ID. True Size and Depth are only found on Garrett's GTI 2500 and 1500.

Garrett is also the only manufacturer to offer Graphic Target Profiling technology that's found on the DSP-based GTP 1350. This exclusive technology takes the guesswork out of treasure hunting by telling you the size (Small, Medium, Large) of your target. No other detector in its class or price range can offer this kind of technology.

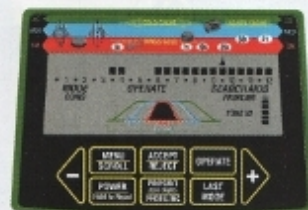
Our exclusive Imaging and Profiling technology is just another way Garrett takes the lead in an industry of imitations.



GTI 2500



GTI 1500



GTP 1350



GTA 550

ACE 250

ACE 150

Get Garrett & Go Graphic

At Garrett, we don't hold back on the technology you get in our GTA[®] and ACE series detectors just because they're more affordable. In fact, we take pride in the fact that we load them up with more desirable features and options than other detectors in their class and price range.

Consider our patented and easy-to-read Graphic Target Analyzer technology, which illuminates an ID cursor on the Upper Scale when a target is detected. The Lower Scale, or Notch Discrimination Scale, indicates the target pattern where the GTA[®] or ACE will or will not produce an audible signal when a target is located. This scale changes to meet your target ACCEPT / REJECT settings when switching between Detection Modes such as ALL-METAL, COINS and JEWELRY. No audible signal is produced when a target is located where a blank notch is present (those regions of the Lower Scale where no cursors appear).

This highly sophisticated, yet simple to operate, GTA technology reveals more about the probable identity of a target with greater precision and accuracy than ever before. We even give you graphic displays indicating Mode settings, Sensitivity settings, battery condition and much more. All this so your treasure hunt can be simple, yet highly enjoyable and rewarding.

ACETM 250

NEW!



\$249.95

PN 1139070
Includes the NEW
RHINO TOUGH
6.5x9" **PROformance**
Submersible Searchcoil



NEW!

4.5" ACE SniperTM
Searchcoil for the
ACE 250!
(Optional)



Features

- Graphic Target ID Cursor (12 Segments)
- Discrimination: Accept / Reject Notch
- Electronic Pinpoint
- Continuous Coin Depth Indicator
- Tone ID, 3 levels
- Sensitivity / Depth Adjustment (8 Settings)
- Battery Condition Indicator
- Headphone Jack
- Interchangeable Ace Series Searchcoils
- Large LCD Screen
- Microprocessor Controlled
- Pushbutton Controls
- Clear Speaker Tone
- Touch-n-Go Operation
- 3-piece travel/storage disassembly to 24"

Modes

- All Metal
- Jewelry
- Custom
- Relics
- Coins
- Pinpoint

Settings

- Full Range, Multi Notch Discrimination Modes
- Sensitivity / Depth
- Mode, 5 Distinct Discrimination Patterns

Specifications

- Length: 42" to 51" - (1.06m - 1.29m)
- Arm Cuff, adjustable
- Weight: 2.7 lbs. (1.2 kgs.)
- Frequency - 6.5 kHz
- 4 AA battery operation (batteries included)
- 2 year warranty

Searchcoils

The ACE 250 comes with Garrett's ALL NEW **PROformance** 6.5x9" searchcoil. The ALL NEW 4.5" ACE Sniper searchcoil is now available for the 250! **TRULY OUTSTANDING** for finding smaller, shallower targets in trashy or confined areas. Enjoy precise pinpointing.

Announcing the **All NEW**, features-loaded, Ace 250 metal detector. With 40 years of engineering prowess behind it and a head-turning sporty, outdoor design, this machine was made to perform for the 21st Century treasure hunter. But don't be fooled, this detector doesn't win first in its class on looks alone! It's as new on the inside as it is on the outside.

Loaded with full-range notch discrimination, pinpoint feature, graphic target ID, excellent detection depth and Touch-n-Go technology, the Garrett Ace 250 is the finest metal detector in its class. It also comes with graphic target ID cursors with 12 element GTA notch discrimination for greater accuracy, Continuous Coin Depth indication, Tone ID, 8 Sensitivity Settings, 5 pre-set hunting modes and of course, the most advanced LCD graphic screen for quick and easy visual target ID. Whew! Need we go on?



ACE™ 150

NEW!

\$179.95

PN 1138070
Includes the NEW
RHINO TOUGH
6.5x9" PROformance
Submersible Searchcoil



NEW!

4.5" ACE Sniper™
Searchcoil for the
ACE 150!
(Optional)



Features

- Graphic Target ID Cursor (5 Segments)
- Coin Depth Indicator
- Tone ID, 3 levels
- Sensitivity, Depth Adjustment (4 Settings)
- Clear Tone Speaker
- Interchangeable Ace Series Searchcoils
- Headphone Jack
- Large LCD Screen
- Low Battery Indicator
- Microprocessor Controlled
- Pushbutton Controls
- Touch-n-Go Operation
- 3-piece travel/storage disassembly to 24"

Modes

- All Metal
- Jewelry
- Coins

Settings

- Sensitivity / Depth
- Mode, 3 Distinct Discrimination Patterns

Specifications

- Length: 42" to 51" - (1.06m - 1.29m)
- Arm Cuff, adjustable
- Weight: 2.7 lbs. (1.2 kgs.)
- Frequency - 6.5 kHz
- 4 AA battery operation (batteries included)
- 2 year warranty

Searchcoils

The ACE 150 comes with Garrett's ALL NEW PROformance 6.5x9" searchcoil. The ALL NEW 4.5" ACE Sniper searchcoil is now available for the 150! TRULY OUTSTANDING FOR FINDING smaller, shallower targets in trashy or confined areas.

Put aside its aggressive good looks and you'll see that Garrett's new Ace 150 is still ahead of the competition in every respect. This rugged new machine exhibits every trait and well thought-out feature you need for coin and general purpose treasure hunting. It is easy-to-use and offers high performance handling without complex settings and adjustments, as well as intuitive controls that make treasure hunting fun, easy and very rewarding.

This sporty Ace 150 also features excellent detection depth, accurate target ID and discrimination and is right on the money when it comes to cost! No other detector will give you Garrett quality features for only \$179.95. Rest assured, this machine will send the competition back to the drawing board!



For more information about the ACE series and related accessories see pages 25 through 27.

INFINIUM ^{LS}™

\$1250.00

PN 1152070

Includes the Power DD

RHINO TOUGH

10x14" **PROformance**
Submersible Searchcoil



Ground Search
Headphones

Specifications

- Length: 28" to 52" (.71m - 1.32m)
- Weight: 3.8 lbs. (1.7 kgs.)
- Circuit type: Advanced Pulse Induction technology, automatic cancellation of salt/ground mineralization
- Multiple Frequency Technology - 96 Frequencies
- Detection Frequency: 730 pulses per second, adjustable
- Submersion depth: Up to 200 feet (65m) Underwater headphones required.
- Buoyancy: Near neutral
- Batteries: 8 AA
- Battery life: Alkaline (Included): 10-15 hours
- Rechargeable (Included) 7-10 hours
- Battery re-charger for AC and automobile (included)
- Control Housing Weight: 31 oz.
- Headphones Weight: 16 oz.

Features

- All Metal Deepseeking Mode
- Audio Threshold, Adjustable
- Audio Tone ID
- Discrimination, Full Range (PI)
- Quick Iron Check
- Frequency, Adjustable
- Ground Balance, Automatic Ground Tracking, 3 position
- Hip Mount Control Box
- Microprocessor Controlled
- Salt Elimination Mode (PI)
- Surface Mount PC Board Technology

Search Modes

- Non-Motion All Metal with Adjustable PI discrimination

Settings

- Ground Tracking Speed
- Discrimination
- Threshold
- Volume Control on Land Headphones
- Detection Frequency

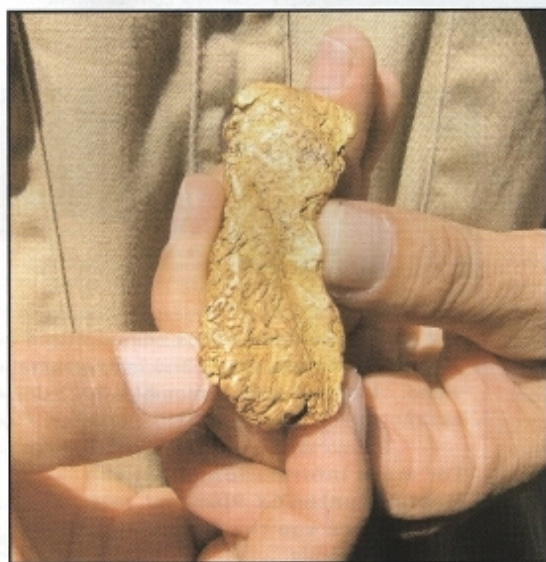
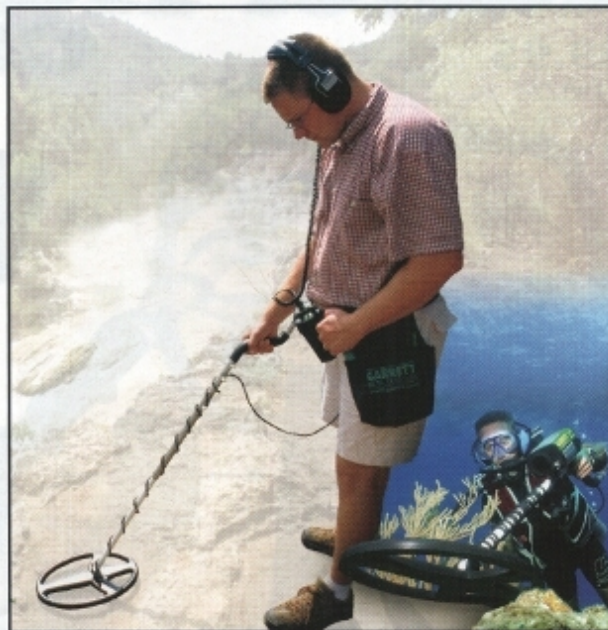
The Infinium LS comes with a 10x14" Power DD **PROformance** Series Coil, hip mount & belt, land headphones and instructional video. Underwater headphones for diving may be purchased separately.

For more information about the Infinium LS and related accessories see the following pages:

- 22 - Searchcoils
- 25 - Accessories
- 26 - Detector comparison table
- 27 - Applications chart

Proven, worldwide performance on every **CONTINENT** and in every **OCEAN!**

For heavily mineralized ground and underwater environments, there's absolutely no comparison to our Infinium LS. With 96 multiple frequencies, it's the world's most powerful pulse induction machine on the market because it's designed for operation in extremely mineralized environments. The Infinium's depth and discrimination capabilities exceed all competition and detectors in its class. Its ruggedness and all-terrain capabilities are unparalleled in the industry. It can be used for nugget, coin, cache and relic hunting virtually anywhere in the world, even at depths of 200 feet (requires optional, submersible headphones). Ultra-low battery drain with standard AA batteries gives it a great advantage over detectors that require heavy motorcycle batteries.



"The Infinium LS is a very sophisticated gold detector. It's simple to operate and I'm often amazed at the depths it reaches. The fact that there are no heavy batteries, harness or power leads to put on and connect makes the Infinium LS a pleasure to use when prospecting new areas. I can be out of my vehicle and checking a new area in seconds. In areas of heavy trash, the Infinium LS really stands out. Using the reverse discrimination in conjunction with the dual tone signal can sure save a lot of digging. The fact that it's waterproof is very reassuring when caught in an unexpected cloudburst!"

Frank
Queensland, Australia.

Optional Searchcoils

A. 10x14" Mono - Lightweight coil with large coverage and excellent depth in light to heavily mineralized soils. 2216900

B. 8" Mono - Lightweight with excellent depth on smaller targets in light to heavily mineralized soils. 2217000

C. 5x10" DD - Provides improved ground rejection and depth on small targets in heavily mineralized soils. 2216700

D. 3x7" DD - Provides enhanced detection of very small targets in extremely mineralized soils. 2216600



Greater Depth in Highly Mineralized Areas


The Infinium LS offers greater depth in highly mineralized environments than any other metal detector in the world and its technology includes:

- Advanced Pulse Induction (API) technology transmits 96 frequencies, simultaneously providing the greatest number of multiple frequencies of any detector on the market.
- Discrimination Dial for All-Metal hunting or precise discrimination, which eliminates unwanted targets and assists in audible target identification.
- Automatic GroundTrack with adjustable tracking speed for hunting in non-uniform soils.
- Audio Threshold Adjustment ensures clear interpretation of all target signals, especially for enhanced detection depth of gold nuggets.

Master Hunter CX Plus™

\$599.95

PN 1199270
Includes the 8.5"
Crossfire Searchcoil



"For over 20 years, professional cache hunters the world over have relied on the Master Hunter's proven ability to find caches. They continue to demand this rugged, deep-seeking detector and without hesitation strongly recommend it to their friends." *Charles Garrett*



Features

- All-Metal Deepseeking Mode
- Discrimination: Dual Full Range
- Graphic Target ID Cursor
- Headphone Jack
- LCD, Shows Target ID and Settings
- Microprocessor Controlled
- Pinpointing, Coin Depth Measurement
- Sensitivity / Depth Adjustment
- Speaker
- Surface Mount PC Board Technology
- Touchpad Controls with One - Touch Operation
- TreasureHound Depth Multiplier Searchcoil option

Specifications

- Length: 34" to 44" (.86m - 1.11m)
- Weight: 3.8 lbs. (1.7 kgs.)
- Frequency Detection - 6.5 kHz
- Batteries: 6 C
- 2 year warranty

Search Modes

- Non-Motion: Deepseeking All Metal with Visual Target ID
- Motion: Full, Dual-Range Discrimination

Settings

- Audio Threshold
- Dual Full Range Discrimination (Ferrous and Non Ferrous)
- Sensitivity / Depth



The Master Hunter CX Plus comes with a 8.5" Crossfire searchcoil and instructional video. Instruccion es disponibles en español.

For more information about the Master Hunter CX Plus and related accessories see the following pages:

- 22 - Searchcoils
- 25 - Accessories
- 26 - Detector comparison table
- 27 - Applications chart

Optional Searchcoils

A. 12.5" Crossfire - Use to increase detection depth for a broad range of hunting conditions. 2217800

B. 4.5" Crossfire - Use to find smaller, shallower targets in trashy or confined areas. 2217600

C. 10x14" DD Coil - Use in areas with moderate to heavily mineralized soils. 2216800

D. Treasure Hound Depth Multiplier - Use to cover large areas, ignore small targets and find deeply buried targets. 1611700 (see page 22)



For extraordinary depth and efficiency under tough operating conditions, there's no competition for Garrett's renowned, all-purpose Master Hunter CX Plus. The CX Plus can be equipped with Garrett's exclusive Treasure Hound Depth Multiplier, which can reach caches and large treasures that many other detectors positively miss.

Master Hunter Depth Package \$749.95 - PN 1199275

Our Master Hunter Depth Package includes the Master Hunter CX Plus with 8.5" Crossfire Searchcoil PLUS our Treasure Hound Depth Multiplier (PN 1611700 - A bonus offer worth \$199.95!)

Sea Hunter Mark II™

\$749.95

PN 1151970
Includes the
RHINO TOUGH
8" **PROformance**
Submersible Searchcoil



Features

- All Metal Deepseeking Mode
- Audio Threshold, Adjustable
- Discrimination: Full Range (PI)
- Headphone Jack - submersible
- Hip Mount Control Box with Pouch
- Microprocessor Controlled
- Salt Elimination Mode (PI)
- Sensitivity / Depth Adjustment
- Surface Mount PC Board Technology

Specifications

- Length: 28" to 52" (.71m - 1.32m)
- Weight: 5.7 lbs. (2.6 kgs.)
- Batteries: 8AA
- Multiple Frequency Technology
- Operating Depth to 200 feet
- Independently sealed battery compartment
- Choice of four housing mount configurations



The Sea Hunter can be used in the hip mount configuration for beach hunting (left) or in the Scuba Mate configuration for underwater hunting (below).



Search Modes

- Non Motion All Metal
- Standard PI Discrimination
- Discrete PI Discriminate

Settings

- Elimination / Discrimination
- Audio Threshold

Optional Searchcoils

A. 10x14" Mono - Use to increase detection depth on a broad range of targets 2215300

B. 8" Mono - Use for maximum detection response in areas with light to heavy mineralization. 2215200 (standard)



The Sea Hunter *Mark II* comes with an 8" **PROformance** mono coil, Belt Pouch, Submersible Headphones and Instructional Video

For more information about the Sea Hunter Mark II and related accessories see the following pages:

- 22 - Searchcoils
- 25 - Accessories
- 26 - Detector comparison table
- 27 - Applications chart

With our unique Discrete Trash Elimination technology, the Sea Hunter *Mark II* can eliminate most pulltabs and foil without significantly degrading the sensitivity of rings and coins in Discrete Elimination Mode. A favorite detector for treasure hunters around the world because of its ability to ignore salt water, it can be used underwater with a short stem or on the beach with its long stem configuration. Its electronic housing may be mounted above, below or under the cuff in either short or long stem configuration. It may also be carried in the belt pouch provided.

Scorpion

Gold Stinger™

\$549.95

PN 1194370
Includes the 5x10"
Power DD
Elliptical Searchcoil



Features

- All-Metal Deepseeking Mode
- Audio Threshold, Adjustable
- Discrimination: Full Range
- Headphone Jack
- Sensitivity / Depth Adjustment
- Speaker
- Surface Mount PC Board Technology

Search Modes

- Non Motion All Metal
- Motion Discriminate
- Calibrated TR Discriminate

Specifications

- Length: 42" to 51" (1.06m - 1.29m)
- Weight: 3.3 lbs. (1.5 kgs.)
- Frequency Detection - 15 kHz
- 3 - 9V batteries

Settings

- Ground Balance, 10 turn
- Discrimination
- Audio Threshold, 10-Turn
- Sensitivity

NOTE: The Scorpion Gold Stinger's Control Housing is detachable for use in the belt mount configuration (belt not included).

Optional Searchcoils

A. 5x10" Crossfire DD - Use in large areas with moderate to heavily mineralized soils. 2219400 (standard)

B. 3x7" Crossfire DD - Provides enhanced detection of very small targets in extremely mineralized soils. 2219300



The Scorpion Gold Stinger comes with a standard 5x10" Crossfire DD elliptical coil, 10" gold pan and instructional video.

For more information about the Scorpion Gold Stinger and related accessories see the following pages:

- 22 - Searchcoils
- 25 - Accessories
- 26 - Detector comparison table
- 27 - Applications chart

The Scorpion Gold Stinger is the cure for today's common Gold Fever! Its world renowned 15kHz Groundhog circuitry has the power to penetrate through heavily mineralized soils to locate nuggets, placer, float and ore veins. Use it when prospecting to sample ore and check "hot rocks" with ease and dependability. Choose between Non Motion All-Metal operation, Motion Discriminate for coin searching or true TR Discriminate to accurately identify or grade conductive ore with the flip of a switch.

The Scorpion Gold Stinger will not let you be fooled by iron rocks, fool's gold, non-conductive specimens or low-grade silver ore!

Gold Pans

There are a variety of gold pans on the market, but Garrett's world famous Gravity Trap™ Gold Panning equipment series has led the industry for 30 years. In fact, they are the world's only patented gold pan with a 90° riffled design that ensures safe, sure, rapid gold recovery in wet or dry conditions. All Garrett pans are lightweight, green for enhanced gold nugget visibility and virtually indestructible for years of gold panning fun and success! Tested and proven worldwide by Charles Garrett and Roy Lagal (professional gold prospector) to find gold, Garrett's gold pans are a must for every recreational and electronic prospector. Charles Garrett strongly recommends the Gold Panning is Easy Video in VHS format. See below for details.



Above: World-famous gold prospector, Roy Lagal.



A

Gold Pan Kit

- 14" Prospector Pan
- 10" Backpacker Pan
- Classifier
- Gold Guzzler Bottle
- 2 gold vials
- Tweezers
- "Find an Ounce of Gold a Day" (book) by Roy Lagal



B

15" Supersluice™

- Traps fine gold to nuggets over 1 oz.
- Twin 1/2" riffles
- Deep throat funnel



C

14" Backpacker™

- Great for wet /dry conditions
- Three 1/2" riffles
- General Purpose



D

10" Backpacker

- Great for wet / dry panning or finishing
- Four 1/2" riffles
- Lightweight
- Portable



E

Sifter/Classifier

- Great for wet /dry conditions
- Sifts gold, coins, jewelry, relics and debris
- Fits 5 gallon bucket
- 7/16" (diagonally measured) exit hole

A. Garrett Gold Pan Kit	\$29.95	PN 1651300
B. 15" Supersluice	\$9.95	PN 1650400
C. 14" Prospector	\$8.95	PN 1650000
D. 10" Backpacker	\$7.95	PN 1650100
E. Sifter/Classifier	\$7.95	PN 1650200
F. Gold Guzzler Bottle	\$3.95	PN 1650300
G. Tweezers / Lens Combo	\$.95	PN 1650800
H. Gold Bottle w/ Green Cap	\$.55	PN 1650700
I. Find an Ounce of Gold a Day (book)	\$3.00	PN 1543800
J. Gold Panning is Easy (VHS)	\$9.95	PN 1670400
K. Gold Panning is Easy (book)	\$9.95	PN 1505470



F

H

I

J

K

G

Searchcoils

GTI Series

TreasureHound EagleEye*	1611800	\$249.95
12.5" PROformance™ Imaging	2220000	\$249.95
10x14" PROformance Power DD	2217300	\$179.95
5x10" Scorcher	2219800	\$149.95
12.5" Scorcher	2219600	\$149.95
9.5" Imaging	2219500 (standard)	\$139.95
4.5" Scorcher	2219700	\$ 99.95

*Available on GTI 2500 only

GTP and GTA^X Series

10x14" PROformance Power DD	2217200	\$179.95
12.5" Crossfire II	2218400	\$139.95
7x10" PROformance Elliptical	2220100 (standard)*	\$119.95
8.5" Crossfire II	2217500	\$ 99.95
4.5" Crossfire II	2218800	\$ 89.95

*standard on GTP 1350 and GTA^X 550

ACE Series

6.5x9" PROformance	2221700 (standard)	\$ 89.95
4.5" ACE Sniper	2221800	\$ 74.95

Infinium LS

10x14" PROformance Power DD	2217100 (standard)	\$179.95
10x14" PROformance Mono	2216900	\$149.95
5x10" Power DD	2216700	\$139.95
8" PROformance Mono	2217000	\$129.95
3x7" Power DD	2216600	\$129.95

Master Hunter CX Plus

Treasure Hound Depth Multiplier	1611700	\$199.95
10x14" PROformance Power DD	2216800	\$179.95
12.5" Crossfire	2217800	\$139.95
8.5" Crossfire	2217700 (standard)	\$ 99.95
4.5" Crossfire	2217600	\$ 89.95

Sea Hunter Mark II

10x14" PROformance Mono	2215300	\$129.95
8" PROformance Mono	2215200 (standard)	\$ 99.95

Scorpion Gold Stinger

5x10" Crossfire DD	2219400 (standard)	\$139.95
3x7" Crossfire DD	2219300	\$119.95



Treasure Hound EagleEye™ (for the GTI 2500)



Treasure Hound Depth Multiplier™ (for the Master Hunter CX Plus)



10x14" Power DD



10x14" Mono



12.5" Imaging



12.5"



9.5"



7x10"



5x10"



8.5"



8" Mono



3x7"



4.5" (ACE Sniper)

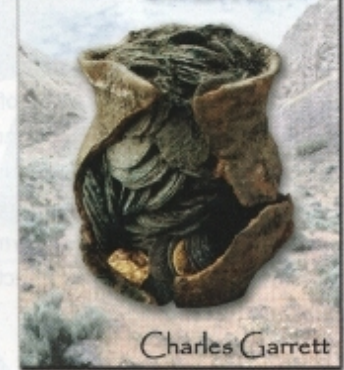


4.5"

RAM Books



Treasure Caches Can Be Found



Learn how to research, locate and recover abandoned caches and follow Charles Garrett as he takes you on some of his most inspiring cache hunts. 194 pages. Charles Garrett \$9.95 PN 1508600

Charles Garrett is the most well-known and respected metal detectorist, treasure hunting author in the world. He writes his books with conviction and shares his treasure hunting tips in generous doses. In the early 1970s, Garrett found himself wanting to make a bigger impact in the world of treasure hunting. Determined to share his enthusiasm with all who would listen, he began writing. He hasn't stopped since.

His books are straight-forward and give sensible advice for new and even veteran treasure hunters. In them he not only emphasizes effective search practices but notes that adventure and a spirit of discovery are the most important traits treasure hunters need to be successful in this hobby.

His first and highly acclaimed book, *Successful Coin Hunting* continues to be a best seller even today. Garrett's current work, ***Treasure Caches Can be Found***, is now available for purchase.



Treasure Tips and Hunting Hints
All the essentials to successful hunting are found in this helpful guide for new treasure hunters. 64 pages. Charles Garrett and other professional hobbyists. \$4.95 PN 1509200

The New Successful Coin Hunting
The world's most authoritative guide on finding valuable coins. 259 pages. Charles Garrett \$9.95 PN 1501500

Ghost Town Treasures
The lore of ghost town hunting with illustrations explaining how to locate and find the hidden treasures. 156 pages. Charles Garrett \$9.95 PN 1508200

Modern Metal Detectors - Revised
Offers a better understanding of any detector, including computerized models. 432 pages. Charles Garrett \$12.95 PN 1501700

Treasure Hunting for Fun & Profit
Garrett tells how coins, jewelry, money caches, etc. have been found and how easy it is to find them today. 204 pages. Charles Garrett \$9.95 PN 1508300

You Can Find Gold with a Metal Detector
Complete information on using detectors to find gold. 140 pages. Charles Garrett/Roy Lagal \$9.95 PN 1545500

Gold Panning is Easy
Shows the beginner how to find and pan gold. 134 pages. Roy Lagal \$9.95 PN 1505470

Buried Treasures You Can Find
State-by-state listings of sites where treasure is believed to exist. 365 pages. Sir Robert Marx \$14.95 PN 1500000

Gold of the Americas
A history of gold and how the precious metal helped shape the history of the Americas. 168 pages. Jennifer Marx \$9.95 PN 1500300

The Competitive Treasure Hunt
How to plan, organize and win competitive treasure hunts. 82 pages. Jack Lowry \$9.95 PN 1508500

Sunken Treasure: How to Find It
Sir Bob Marx shares a lifetime's experience locating and recovering treasure beneath the sea. 400 pages. Sir Robert Marx \$14.95 PN 1507500

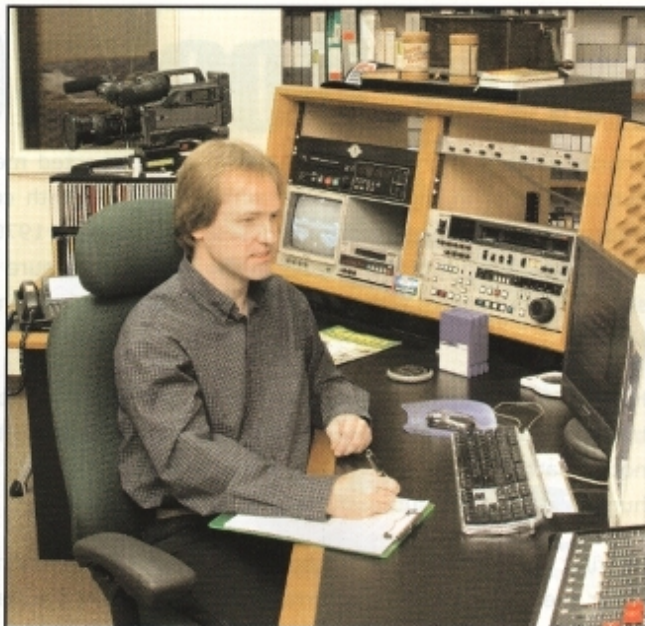
Treasure Recovery From Sand & Sea
How to locate the "blanket of wealth" beneath beach sands, the surf and world's waters. 466 pages. Charles Garrett \$7.95 - PN 1505700

Find an Ounce of Gold a Day
Pocket Guide (included with Gold Pan Kit) gives basic instructions on using Gravity Trap pans to recover gold. 48 pages. Roy Lagal \$3.00 PN 1543800

Introduction to Modern Metal Detectors
Pocket guide carefully explains how metal detectors operate and how to find treasure with them. 80 pages. Charles Garrett \$1.00 PN 1545100

Videos/DVDs

For many years, Garrett Metal Detectors has been self-sufficient, producing all marketing communications and video productions in-house. Today, Vaughan Garrett, brings you more to see and love about the hobby of treasure hunting with his insightful instructional and adventure-related videos. Mr. Garrett is also responsible for producing all of the Company's security-related DVDs and videos, which are used for training seminars at such events as the Olympic Games and have been instrumental in improving the effectiveness of security checkpoints around the world.



Above: Vaughan Garrett, Vice-President, Garrett Metal Detectors

Prospecting and Treasure Hunting

Southwestern Treasures

Treasure of Mexico - Electronic Prospecting by the Garrett field team in Mexico's Cobre Canyon; Gold and Treasure Adventures - Competition hunt in California; Treasure hunting in Europe.

\$9.95
PN 1670100

Treasure Adventures

The Silent Past - The ghost of a Big Bend prospector helps a modern-day family discover buried artifacts; Tracking Outlaw Treasure - A modern day search of cached loot from a 19th Century stagecoach robbery.

\$9.95
PN 1670200

Weekend Prospecting

Shows all current techniques for locating gold nuggets, veins, specimens and placer deposits with metal detectors and gold pans.

\$9.95
PN 1670600

Instructional VHS

GTI 2500	34 min	1673100	\$9.95
GTI 1500	28 min	1677200	\$9.95
NEW! GTP 1350	25 min.	1673900	\$9.95
GTA [®] 1250	19 min	1673200	\$9.95
GTA [®] 750	17 min	1673300	\$9.95
GTA [®] 550	15 min	1673400	\$9.95

Sand and Sea Treasures

Treasure Recovery from Sand and Sea - Slide show on video. "How-to" beach/surf/water hunting tips; Treasure of Indian Ocean - Search for 18th Century wreck off Madagascar shows underwater recovery.

Sir Robert Marx
\$9.95 - PN 1670300

Gold Panning is Easy

Tells where and how to locate gold with the world-famous Gravity Trap gold pans. Step-by-step gold recovery techniques from companion RAM books are shown. A must-see for all gold panners.

\$9.95
PN 1670400

Treasure Visions and a Utah Treasure Trek

Charles Garrett documents ghost town and other hermit cabin searches and actual finds of several caches of gold, silver and coins. Techniques from companion Ghost Town Treasures (book) are shown in the award-winning video. A Utah Treasure Trek is a 20 minute behind-the-scenes filming of Treasure Visions that runs immediately after Treasure Visions.

\$9.95
PN 1673500

GTA [®] 400/350	14 min	1670500	\$9.95
Ace 100-200-300	16 min	1677700	\$9.95
MH CX Plus	14 min	1671100	\$9.95
Scorpion GS	24 min	1672500	\$9.95
Sea Hunter Mk II	14 min	1673600	\$9.95
NEW! Infinium LS	17 min	1673800	\$9.95

NOTE:

All of Garrett's instructional videos and DVDs clearly explain the various operational features, modes, controls and adjustments of the Company's ground search metal detectors. Simple, step-by-step instructions empower the user with the ability to successfully and effectively hunt for treasure. Videos are included at no additional charge with most detectors.

Instructional DVD

GTI 2500 & 1500	62 min	1678300	\$19.95
-----------------	--------	---------	---------

Accessories



ACE™ Series Accessories

A. ACE Tote Sport Bag	1651500	\$14.95
B. ACE Sport Phones	1612400	\$14.95
C. ACE Baseball Cap	1663100	\$ 9.95
D. ACE Sport Visor	1663200	\$ 9.95
E. ACE 6.5x9" Coil* Cover	1605700	\$14.95

*Searchcoil not included



Carry Bags

A. Padded, 2-zipper Bag	1608500	\$69.95
B. CX Supreme Bag	1617300	\$99.95
C. GTI Supreme Bag	1616800	\$99.95
D. All-Purpose Carry Bag	1608700	\$29.95
E. All-Purpose Convenience Bag	1611500	\$29.95



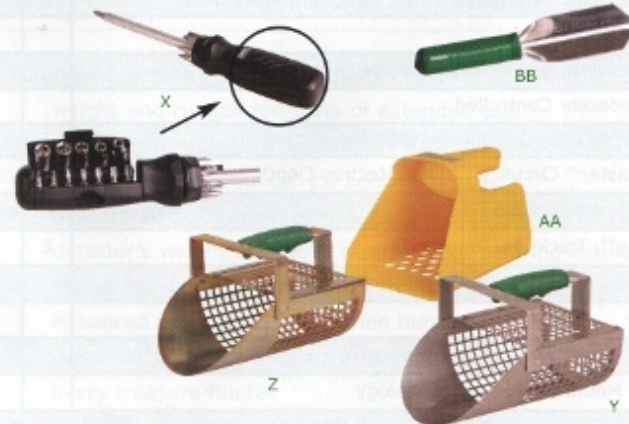
Detector Gear

F. Garrett Headphones	1603000	\$29.95
G. Land Headphones (Infinium LS and Sea Hunter only)	2202400	\$59.95
H. Submersible* Headphones (*To 200 feet. Infinium LS and Sea Hunter only)	2202100	\$99.95
I. CX Coverup	1600400	\$14.95
J. GTA® or GTI 1500 Coverup	1600371	\$14.95
K. GTI 2500 Coverup (shown)	1618200	\$14.95
L. Treasure Ace 100 / 200 Coverup	1619900	\$14.95
M. 4.5" Coil Cover	1604200	\$ 4.95
N. 8.5" Coil Cover (shown)	1602200	\$ 6.95
O. 9.5" Coil Cover	1601900	\$ 9.95
P. 3x7" Coil Cover	1601400	\$10.95
Q. 5x10" Coil Cover	1602500	\$14.95
R. 10x14" DD Coil Cover	1606400	\$19.95
S. 7x10" Elliptical Coil Cover	1604300	\$14.95



Hunting Tools

T. Coin Pouch	1608800	\$ 8.95
U. Coin Probe	1605800	\$ 8.95
V. Composite Coin Digger	1606000	\$ 6.95
W. Coin Kit (3 items - T, U & V)	1601070	\$21.95
X. Texas Twister	1618500	\$19.95
Y. Stainless Steel Sand Scoop	1600900	\$59.95
Z. Metal Sand Scoop	1600970	\$39.95
AA. Plastic Sand Scoop	1600971	\$19.95
BB. Stainless Steel Trowel	1606100	\$14.95



Promotional Wear

CC. Embroidered black cap	1662200	\$10.00
DD. Embroidered white cap	1662300	\$10.00
EE. Two-tone imprinted cap	1662800	\$ 5.00



Features. Options.

Product Comparison Guide

PI Pulse Induction (Multiple Frequency)
 PP With Patented Eagle Eye Pinpointing Capability
 SHI Submersible Headphones Included
 SHA Submersible Headphones Available

Patented (P)
 Exclusive (E)
 GTI 2500
 GTI 1500
 GTP 1350
 GTAx 550
 ACE 250
 ACE 150
 Infinium LS
 Master Hunter
 Sea Hunter
 Gold Striker

Purchase Price	\$1099.95	\$799.95	699.95	\$499.95	\$299.95	\$179.95	\$1250.00	\$699.95	\$749.95	\$549.95
All Metal Deepseeking Mode		•						•	•	•
Audio Threshold, Adjustable		•	•	•	•			•	•	•
Audio Tone ID		•	•	•		•	•	•		
Batteries (included in all models)		8AA	8AA	8AA	8AA	4AA	4AA	8AA	6C	8AA 3 9V
Coin Alert Belltone Audio	E	•	•	•	•	•	•			
Continuous Coin Depth Indicator						•	•			
Digital Signal Processor (DSP)	E	•	•	•						
Discrimination: Dual Full Range								•		
Discrimination: Full Range							PI		PI	•
Discrimination: GTA Accept / Reject Notch	P	•	•	•	•	•				
Fast Track Ground Balance (All Metal Mode)		•						•		
Frequency, Adjustable		•	•	•			•			
Frequency, Detection (kHz)		7.2	7.2	7.2	7.0	6.5	6.5	PI	6.5	PI 15
Graphic Target Analyzer™ (GTA™), Target ID Cursor	P	•	•	•	•	•	•	•		
Graphic Target Imaging™ (GTI™), True Target Size and Depth	P/E	•	•							
Graphic Target Profiling™ (GTP™), Relative Target Size				•						
Ground Balance, Manually Adjustable		•								•
Ground Balance, Automatic Ground Tracking		•	•	•			•			
Headphone Jack		•	•	•	•	•	•	SHA	•	SHI
Hip Mount Battery Pack or Control Box	P	•	•	•	•			•		•
Last Mode Switching (Instant Switching Between Two Modes)		•	•	•	•					
Last Target Recall (Treasure Talk Voice Announcement)	E	•								
LCD, Backlit		•	•	•						
LCD, Shows Target ID and Settings		•	•	•	•	•		•		
Microprocessor Controlled		•	•	•	•	•	•	•	•	•
Pinpointing, Coin Depth Measurement		•	•	•	•	•		•		
PowerMaster™ Circuitry (20% Detection Depth Increase)	E	•	•	•						
Salt Elimination Mode		•	•	•				PI		PI
ScanTrak™, Tracks Hunting Style	E	•	•	•						
Sensitivity / Depth Adjustment		•	•	•	•	•		•	•	•
Speaker		•	•	•	•	•		•		•
Surface Elimination, Adjustable		•								
Surface Mount PC Board Technology		•	•	•	•	•	•	•	•	•
Touchpad Controls with One - Touch Operation		•	•	•	•	•		•		
TreasureHound Depth Multiplier™ (2 box) Searchcoil Option	E	PP						•		
TreasureTalk™ (voice capability)	E	•								
Video Tape, Instructional		•	•	•	•			•	•	•
Volume Control		•	•	•						

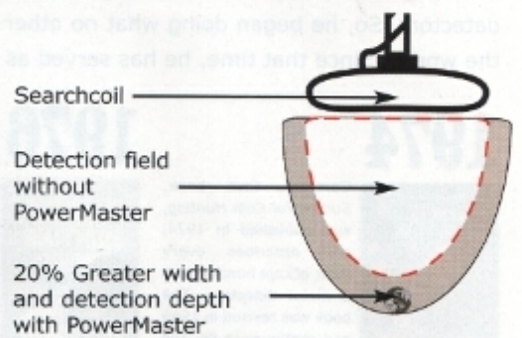
ns. Technology.

Garrett Metal Detectors Has Them All!

Hunting Guide	GTI 2500	GTI 1500	GTP 1350	GTAx 550	ACE 250	ACE 150	Infinium LS	Master Hunter	Sea Hunter	Gold Stinger
Coin	★	★	★	★	★	★		•		
Jewelry	★	★	★	•	•	•	•	•	•	•
Relic	★	★	★	•	•		★	★		•
Cache	★	•	•	•			•	★		•
Prospecting	★	•	•				★			★
Ghost Town	★	•	•	•				•		•
Competition Events	•	★	★	★	★	•				
Beach/Surf	•	•	•				★		★	
Treasure Diving							★		★	

★ Highly Recommended • Recommended

PowerMaster™ Technology



PowerMaster circuitry boosts detection depth by 20 percent and increases searchcoil scanning width. To find detectors with PowerMaster technology, see page 26.

Relative Depth Guide

+ Denotes results in All-Metal Mode

GTI 2500	GTI 1500	GTP 1350	GTAx 550	ACE 250	ACE 150	Infinium LS	Master Hunter	Sea Hunter	Gold Stinger

Garrett Equipment



- A. Construction** - Durable, impact resistant construction is light weight and rugged for years of extended use.
- B. Battery** - Lightweight battery pack requires no tools to change and can be hip mounted for lightweight use.
- C. S-stem Grip** - Ergonomic s-stem grip evenly balances the detector's weight to reduce muscle fatigue during extended hunts.
- D. Headphone** - Easily accessible headphone jack offers option for enhanced audio perception when hunting.
- E. Armrest** - Padded armrest inserts create a comfortable fit for every treasure hunter.
- F. Coil** - Water tight coil can be submerged to approximately 2' in water and resists wet climates.
- G. Stand** - Convenient stand protects the detector from rough ground surfaces.
- H. Stem** - Durable, aluminum stem is lightweight, rugged and can be adjusted to user's height preference.

Charles Garrett "wrote the book" on **TREASURE HUNTING**



Charles Garrett, a true pioneer of metal detector treasure hunting, has not only revolutionized metal detection technology that makes treasure hunting rewarding for millions of hobbyists worldwide, but has literally "written the book" about it. In the 1960s he recognized that there were no guide books that discussed the technology and techniques of treasure hunting with modern detectors. So, he began doing what no other person would; he began writing and sharing his successes of treasure hunting with the world. Since that time, he has served as the principal author of how-to books and manuals for the treasure hunting industry.

1974



Garrett's first book, *Successful Coin Hunting*, was published in 1974, and describes every facet of coin hunting with a metal detector. The book was revised in 1988 and continues to be "the Bible" of Coin Hunting.

1976



In 1976 Garrett put pen to paper to write *Treasure Hunting Pays Off*, which describes how to find all types of treasure with metal detectors under all conditions. (No longer in circulation.)

1979



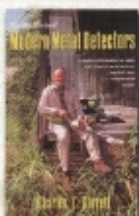
1979 was the year Garrett introduced, *Electronic Prospecting*, in which he discusses how to find gold with a metal detector as well as the benefits of using plastic gold pans. (No longer in circulation.)

1979



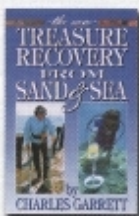
Garrett's 1979 *VLF-TR Metal Detector Handbook* explains emerging VLF technology and how it applies to the use of metal detectors in heavily mineralized soils. (No longer in circulation.)

1985



1985 marked the first edition of Garrett's popular *Modern Metal Detectors*. This book discusses the capabilities and limitations of modern metal detection and discrimination technology.

1988



In 1988, Garrett responds to the increasing amount of interest in underwater treasure hunting with *Treasure Recovery From Sand and Sea*.

1988



Garrett wrote *Modern Electronic Prospecting* in 1988, which provides an in-depth discussion of gold recovery with computerized prospecting detectors. (No longer in circulation.)

1992



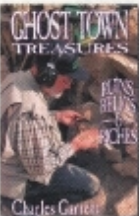
1992 marked the year of *Let's Talk Treasure Hunting* in which Garrett highlights the rewards and health benefits of metal detecting for people of all ages. (No longer in circulation.)

1995



By 1995, Garrett finds a need to further explain the simplified features and automatic operation of gold prospecting detectors in *You Can Find Gold with a Metal Detector*.

1995



For years Garrett field tested his detectors in ghost towns and in 1995 he shares his experiences and tips for detecting and recovering in *Ghost Town Treasures*.

1997



To meet the increasing popularity of treasure hunting among young treasure hunters in 1997, Garrett wrote *Treasure Hunting for Fun and Profit*. This book remains a strong "how-to" book for new hobbyists.

2004



To further inspire treasure hunters who dream of finding a hidden cache, Garrett wrote *Treasure Caches Can Be Found* in 2004. *Treasure Caches* explains the secrets, adventures and "how-to's" of successful cache hunting.

The books shown above are some of Charles Garrett's major works, printed and sold by RAM Publishing. For a current listing of his inspiring how-to treasure hunting books, see page 23 inside this catalog, contact your local Garrett dealer or visit a book supplier near you. You can also visit us online at www.garrett.com for more information about Garrett books, products and accessories.

GARRETT

Discovering what's hidden below™
www.garrett.com

Automatic Ground Track, Bloodhound, Coin Alert, Coin Max, Crossfire, CX Plus, Deepseeker, Depth Multiplier, EagleEye, Fast Track, Garrett Academy of Metal Detection, Garrett's Gravity Trap, GTA, GTI, Graphic Target Analyzer, Graphic Target Imaging, Imaging, Master Hunter, Pinpointing, Power Master, RAM Books, Scan Track, Scorcher, Scorpion Gold Slinger, Sea Hunter Mark II, ScubaMate, Super Deep Imaging, Super Buick, Super Sniper, Target Imaging, Texas Twister, TreasureEye, Treasure Hound, Treasure Max, Treasure Talk, Treasure Vision, Garrett Metal Detectors and www.garrett.com are trademarks and registered trademarks of Garrett Electronics, Inc.



Free World Bible Study
Correspondence Course
Write:
Search International
1881 W. State Street
Garland, Texas 75042

PN 1540105