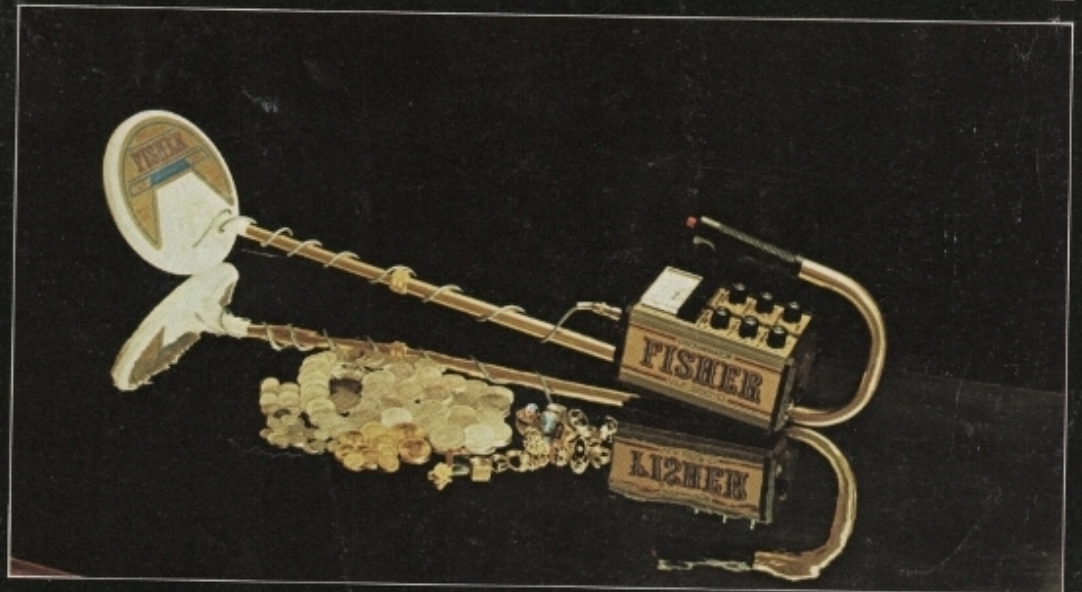


FISHER

The First Name in Metal Detectors



Fisher: Five Decades of Leadership

Fisher Research Laboratory's forty-nine year tradition of excellence in metal detection equipment is unmatched in the industry. No other manufacturer has so consistently been first, and more importantly, no other manufacturer has so consistently been best. Fisher has played an important part in making the industry what it is today. Creative 'firsts' from Fisher comprise a chronological history of progress and leadership in the metal detector industry.

Important Firsts From Fisher

- First to recognize the possible usefulness of radio waves to locate metallic objects.
- First to develop TR (transmit-receive) and BFO (beat frequency oscillator) circuits for use in metal detection equipment.
- First to develop VLF (very low frequency) version of TR circuitry for metal detectors.
- First to design metal detector circuits that discriminated against 'trash items' while still detecting good targets.
- First to supply military forces, utility companies, treasure hunting customers and governments with portable hand held equipment.
- First to design detection equipment capable of detecting objects as deep as 450 feet.
- First to design detection equipment specifically for coinshooters and relic hunters.



Quality People, Quality Work

It has been said by more than a few who have visited our Manufacturing and Sales Facility, that the Fisher staff wears a look of pride that is not often seen these days. Without the support of the professionals in our Administrative, Assembly, Engineering, Sales and Management areas, we would not be where we are today. It is PRIDE that will keep Fisher in a leadership position for years to come.

Hundreds of Thousands in Use

During our forty-nine years in business, many hundreds of thousands of pieces of metal detection equipment have been sold all over the world. In fact, Fisher metal detectors are so reliable that many of our earliest tube type models are still being used today.

Engineering Excellence



While imagination has made Fisher the leader in metal detection equipment, it is engineering excellence that has kept Fisher at the forefront of the industry. In 1978 our company* spent in excess of one million dollars on engineering and development of our wide product line, which includes treasure and mining equipment as well as products intended for the utility markets. More than the total annual sales of many metal detector companies.

Every piece of Fisher equipment incorporates state-of-the-art circuitry and design features. Every Fisher model is engineered and designed in the United States to meet the highest quality standards. Every component that goes into your Fisher is thoroughly tested prior to assembly. Each sub-assembly from the circuit board to the search coil is completely tested at least three times . . . 300% Fisher quality, which insures you the utmost in reliability.

At Fisher, performance is the keyword. In the Fisher line, a new model means a significant improvement in performance, reliability and durability, not just a new sales promotion.

When You Make it Better, You Back it Better

Every Fisher metal detector is backed by our years of experience, the most in the business. Our highly respected warranties provide the customer with extended parts and limited labor coverage for FIVE full years on the Gemini II and all the detectors in the 440 and 550 series. The same coverage is provided on the 990 series for TWO years.

Not only does Fisher offer full factory repair facilities, we also have highly trained specialists, staffing service centers the world over.



Fisher—The First Name in Metal Detectors

Since our beginning in 1931 we've led the industry in new and better ideas. And for all this time, discriminating metal detector users and treasure hunters around the world have been appreciating the high quality and fine performance of Fisher Metal Detection equipment.

*FRL, INC. is a subsidiary of COHU, INC.

Detector with *DST . . . in a Class by Itself

***DST . . . DUAL-SYNCHRO-TUNING:** A Fisher exclusive and one of the most advanced features ever offered. Once the unit has been tuned the operator has true one-hand operation. The *DST automatically retunes to your preset level when switching from one mode to the other. All with the simple flick of a switch.



Jack Gunter, a 555-D owner, found this valuable Mayan flute on the Florida coastline. He has received offers of \$25,000 for this rare piece.

"I'm sure when better detectors are built, Fisher will build them." . . . And we're sure that Jack will have one.



SPECIFICATIONS: 4.5 KHz VLF detection circuit • Adjustable discrimination level • Ground rejection control • Battery check switch • On/Off/Volume control • Extruded aluminum component housing • Anodized finish with Duralon end caps • Stability legs • ¼" Stereo Headphone jack • 2½" moisture proof speaker • 450 Hz audio frequency • 31" to 45" telescoping stem • Comfortable hand grip • 8" coils • Coil Connector • Operates on 12 Penlight batteries • Battery life 50 hours (intermittent use) • **WEIGHT:** 555-D, 5¼ lbs.; 555-D/B, 5 lbs. • All 550-D Series detectors are covered by Fishers' Five-year Warranties. Details available upon request.



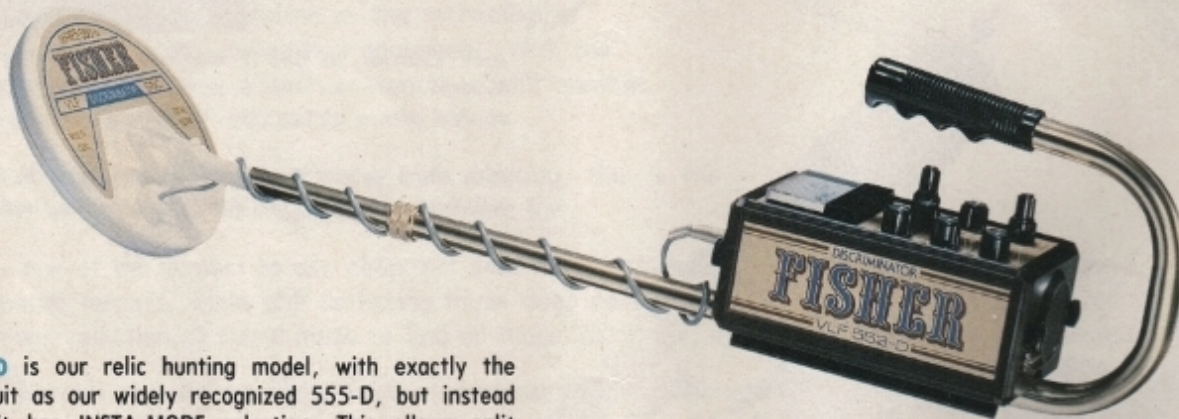
550-D SERIES

In the No Compromise

These three Fisher models are based on the same circuit design that has made the 555-D such a success, but with different features to suit your individual needs.

All of the 550-D models have dual modes of operation, VLF discrimination with fully adjustable rejection levels, and a ground rejecting all metal mode. Indicating meters, 8" coils (fully waterproof and submersible) and coil connectors, for easy interchange of coils, as standard equipment.

True versatility and a stable circuit design are combined to make this the most popular series of detectors ever offered to you.



THE 553-D is our relic hunting model, with exactly the same circuit as our widely recognized 555-D, but instead of *DST it has INSTA-MODE selection. This allows split second mode changes, often preferred by relic hunters who don't work 'trashy' areas. Works great for coinshooting too. With the broadest range of tuning, you can cover the widest range of ground.

FEATURES INCLUDE:

- Insta-Mode Selector Switch
- Independent Tuning Controls
- Automatic Speaker Disconnect
- Signal Intensity Meter
- Individual Battery Check

"I've found relics in places I thought were cleaned out." J.R. Georgia

"I couldn't believe how well I did the first time out." J.F. Oregon

SPECIFICATIONS: 4.5 KHz VLF detection circuit • Adjustable discrimination level • Ground rejection control • Battery Check Switch • On/Off/Volume Control • Extruded aluminum component housing • Anodized finish with Duralon end caps • Stability legs • ¼" stereo headphone • Jacks • 2½" moisture proof speaker • 450 Hz audio frequency • 31" to 45" telescoping stem • Comfortable hand grip • Coil Connector • 8" Coils • Operates on 12 AA Penlight batteries • Battery life 50 hours (intermittent use) • **WEIGHT:** 553-D 5½ lbs.; 552-D 5 lbs.; 551-D 4¾ lbs. • All 550-D Series detectors are covered by Fishers' Five-year Warranties. Details available upon request.

Tradition of the 555-D

THE 552-D is the most popular detector in its price range. We feel the reasons for its popularity are the 552-D's proven performance, high quality, and superior features.

FEATURES INCLUDE:

- Push Button Tuning
- GNC Sensitivity Control
- Phase Adjustment Control
- On/Off/Volume Controls

"The 552 is my third detector, and the best I've ever used." S.R. California

"Finest detector I've ever used." A.W. Florida

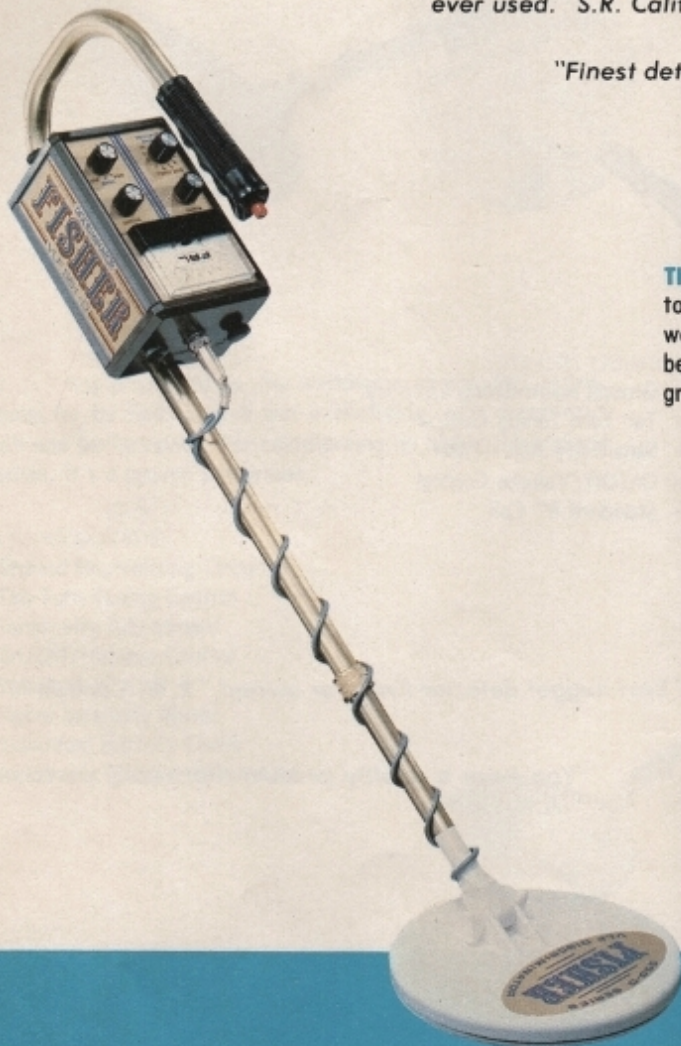
THE 551-D is by far the most sophisticated VLF discriminator in the medium priced range. Especially designed for the weekend coinshooter, yet easy enough to operate for the beginner. Whatever your TH'ing needs are, the 551-D is a great performer.

FEATURES INCLUDE:

- Push Button Tuning
- Combined GNC/Discriminate Level
- On/Off/Volume Control

"We have two 551-D's in the family; we wouldn't trade them for anything." B.D. Tennessee

"It is a most excellent detector." M.R.F. England

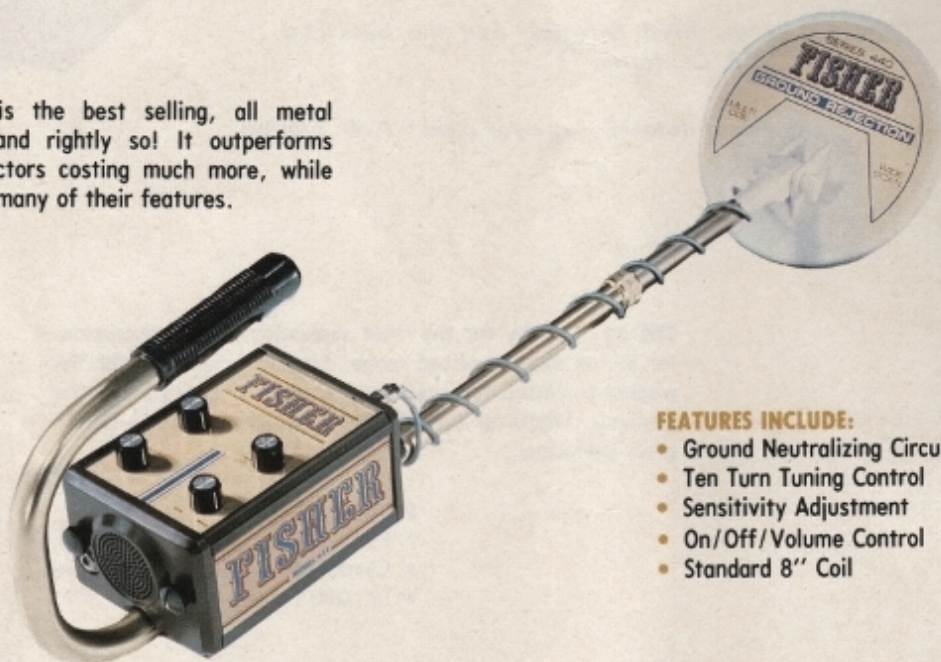


VLF 440 SERIES

Three models with the

The finest VLF, all metal, ground canceling detectors available on the market. The 440 models have proven themselves, time and time again as the most sensitive, deep seeking detectors you can buy. For relic hunting their results are legendary. For gold hunting they're unbeatable. Law enforcement agencies and utility companies are using the same basic circuit for their highly demanding needs. For the TH'er who doesn't need the discrimination feature, the 440's are the best.

THE 441 is the best selling, all metal detector, and rightly so! It outperforms other detectors costing much more, while giving you many of their features.



FEATURES INCLUDE:

- Ground Neutralizing Circuitry
- Ten Turn Tuning Control
- Sensitivity Adjustment
- On/Off/Volume Control
- Standard 8" Coil



"Best nugget detector I've ever owned." R.W. Canada

*"You have a quality product that really performs."
A.K. Florida*

If you do a lot of TH'ing you will want to consider our body mount versions of the 440 models. For competition hunts or use in streams and beach areas it's invaluable. Here the body mount is shown in use.

circuit that started the VLF craze

THE 442 is designed for the TH'er who needs precise pin-pointing capabilities in his search for gold nuggets and small relics.



FEATURES INCLUDE:

- Ground Neutralizing Circuitry
- Ten Turn Tuning Control
- Sensitivity Adjustment
- On/Off/Volume Control
- Standard 8" Coil
- Signal Intensity Meter

"Once tuned, my 442 did not drift and had excellent depth in black sand." G.F. California

"Best find to date, a 42 oz. gold nugget." B.M. Colorado

THE 443 has proven to be the workhorse of the 440 series. Famous for its finds in civil war battlefields, with exceptional depth and performance. For coinshooting on highly mineralized beaches, it's a proven performer.

FEATURES INCLUDE:

- Ground Neutralizing Circuitry
- Ten Turn Tuning Control
- Sensitivity Adjustment
- On/Off/Volume Control
- Standard 8" Coil
- Signal Intensity Meter
- Individual Battery Check
- Automatic Speaker Disconnect



"I've tried others, but none as good as your 443." F.T. Australia

"Civil war relics as deep as FIVE feet." B.J. Virginia

SPECIFICATIONS: • 4.5 KHz VLF detection circuit • Ground rejection Control • Ten turn tuning control • Extruded aluminum component housing • Anodized finish with Duralon end caps • Stability legs • ¼" stereo headphone jack • 2½" moisture proof speaker • 450 Hz audio frequency • 31" to 45" adjustable, stem • Comfortable hand grip • Coil connector • 8" waterproof and submersible coil (3½" and 11" also available) • Operates on 12 AA Penlight batteries (50 hours battery life-intermittent use) • Weight; 443, 4¾ pounds. 442, 4½ pounds. 441, 4 pounds. • The weights are the same for the body mount versions of each model • All the 440 series detectors are covered by Fishers' Five Year Warranty, details are available upon request.



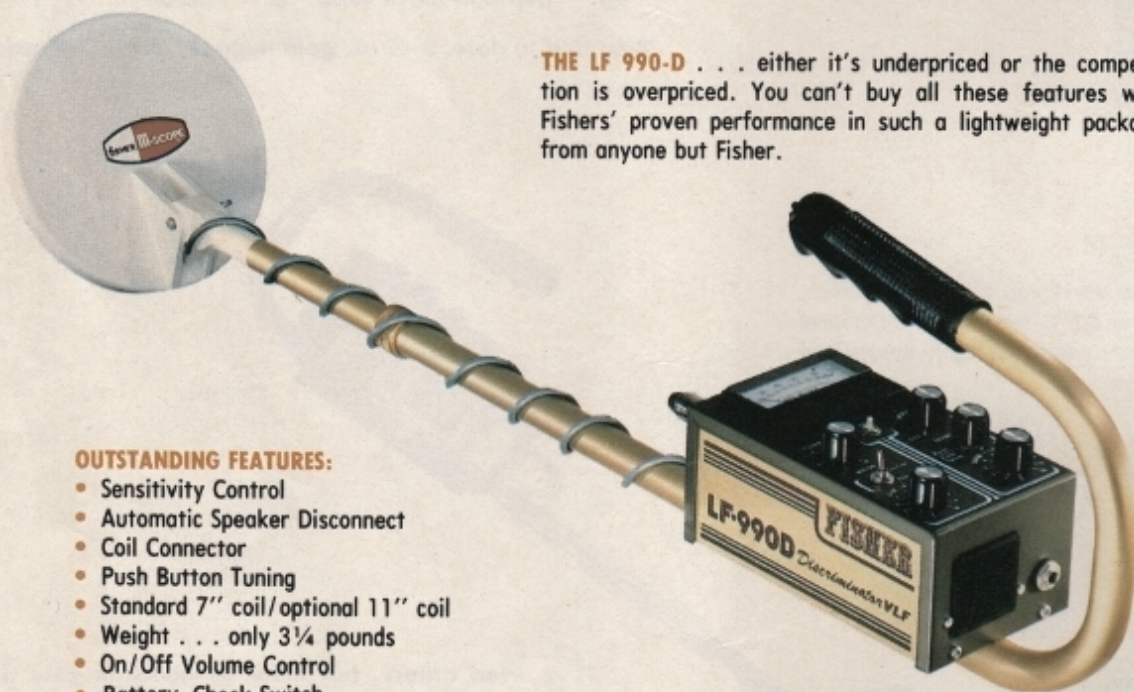
900 LF SERIES

Lightweight,

Fisher engineers have successfully combined superior performance and outstanding quality in an easily affordable line of detectors.

The 20 KHz circuit and dual modes of operation give you great sensitivity and depth with high circuit stability in a lightweight package. The LF 900-D models have built themselves a reputation based on proven performance and value.

Fishers' LF 900-D series costs the same as other low priced units, but that's where the similarity ends. With Fisher you also get performance and value at a price everyone can enjoy.



THE LF 990-D . . . either it's underpriced or the competition is overpriced. You can't buy all these features with Fishers' proven performance in such a lightweight package from anyone but Fisher.

OUTSTANDING FEATURES:

- Sensitivity Control
- Automatic Speaker Disconnect
- Coil Connector
- Push Button Tuning
- Standard 7" coil/optional 11" coil
- Weight . . . only 3¼ pounds
- On/Off Volume Control
- Battery Check Switch

"When we saw your 990 detector at our dealer, we realized we could finally afford a quality detector. Thank you, Fisher." M.L. California

LF 900-D SPECIFICATIONS: 20 KHz Low Frequency detection circuit • Discriminate/ground reject mode selector switch • Adjustable discriminate level control • Ground rejection control • On/Off/Volume control • Single turn tuning control • Durable aluminum component housing • Heavy duty mar resistant anodized finish • ¼" stereo headphone jack • 2¼" moisture proof audio speaker • 300 Hz audio frequency • 32" to 44" telescoping adjustable stem • Comfortable handle grip • Fully adjustable submersible coils • Operates on 2-9 volt transistor batteries • Easy battery access • 22 hours battery life (intermittent use). All LF 900-D detectors are covered by the Fisher Two-year Warranty. Details available upon request.

Affordable Family Fun

THE LF 960-D gives you professional performance at a beginners price. You will find the 960 to be a great little performer, and a real pleasure to use with all these features.

- Push Button Tuning
- Indicating Meter
- Battery Check
- Standard 7" coil
- Weight: 3 1/4 pounds

"Being only five feet tall, I'd given up hope of ever really enjoying treasure hunting with my husband; your new 960 model has changed that." S.F. Louisiana

THE LF 930-D is not an average TR type detector, but a true low frequency, dual mode, Fisher circuit design at TR prices. And here is the best part; all these features.

- Push Button Tuning
- Uses 2-9 volt transistor batteries
- Standard 7" coil
- Weighs only 3 pounds.

"I bought my boy a 930 for his 14th birthday. He loves it, in fact we all do." M.P. Idaho



GEMINI II

For 11 years, the basic Gemini has been filling the needs of an enthusiastic group of serious TH'ers who actively search for major treasure, hoardes of coins, gold and silver bullion, treasure chests, ore veins and other deep treasure caches.

The Gemini has been so successful in these areas, we didn't think it could be improved. Our research and development team disagreed. They have designed a detector with substantial improvements in performance, not only for treasure hunting, but with added features that make it versatile enough for use by utility companies and plumbing and electrical contractors.

Serious treasure hunters use the Gemini II's inductive mode on all their expeditions, along with other equipment, such as Fishers' VLF 440 detectors, Dar-Nel locating rods, and Magnetometers.

The new conductive mode is a real time saver to commercial users, as they will now have the ability to trace pipes and cables up to 250 feet under the proper conditions.

For serious treasure hunters and commercial users, the Gemini II is the one piece of detection equipment they can't do without.

PENETRATION: Under average soil conditions you may expect to locate a metallic object, buried for about two years, as follows:

APPROXIMATE SIZE

4 square inches
½ square foot
1 square foot
4 square feet
1 square yard
2 square yards

DEPTH

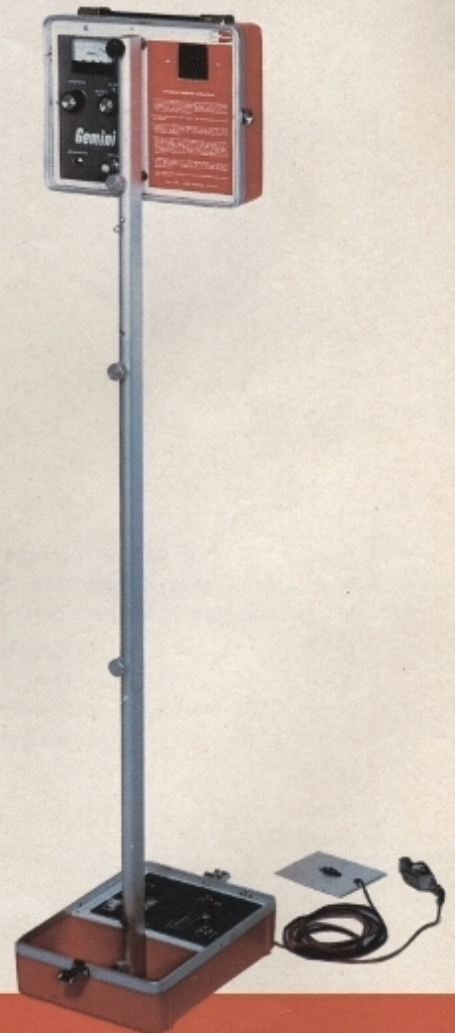
14 inches
42 inches
6 feet
10 feet
14 feet
22 feet

APPLICATIONS:

Locates all types of metal and metallic ore, also capable of tracing water, gas and sewer pipes, electrical and phone cables. Operator can actually trace a single cable/pipe by using the conductive mode, even when this cable/pipe is surrounded by other cable/pipe targets. A metal snake can be used for the tracing of plastic pipes.

SPECIFICATIONS:

Output frequency 82 KHz + 5 KHz • 11 pounds net weight • Overall dimensions: assembled 51 inches • Transmitter/Receiver dimensions 11½" x 9" x 3" (each) • Battery: two 9 volt NEDA 1603 • Average battery life 1500 hours • Five-year limited Warranty.



Treasure Hunting is Fun . . . and Profitable



Jim Walker of San Diego, Ca. has found 20,000 coins and 250 rings in 2 years.

Jim Patton presenting 1st place plaques at 1978 PCSC hunt. L. to R. Don Pepper, Sandy Goldstein and Jim.



Ray Gailbrath, avid coin-shooter, at PCSC hunt.



Jim Patton conducting 'actual use' testing of Fishers' new VLF circuit on field trip in the Bahamas.



Beads, found by Jeff White, with silver crown, as featured in spring issue of "Treasure Found."



Robert goes on T.V. Jim Martin, filming for California network show.



Robert Brush with his finds. Robert is a member of Carl Schmeizles' "army" of TH'ers.

Fisher Detector Applications

550-D SERIES

Fantastic depth and sensitivity for both coinshooting and relic hunting. Fully adjustable discrimination level for total operator control in 'trashy' areas. All metal ground cancelling mode for TH'ing in mineralized soil conditions. Most versatile detectors available.

440 SERIES

Excellent all metal detection capabilities from gold hunting to relic hunting. Total ground cancelling circuitry lets you hunt the most mineralized sites. Where all metal detection without discrimination is required, the 440's are the answer.

LF 900-D SERIES

The most affordable detectors available with Fisher quality and performance. Lightweight and great for coinshooting and relic hunting. Easy to use, perfect for beginners or anyone wanting a lightweight detector and not requiring the super depth of the 440 and 550-D Series.

GEMINI II

The ideal detector for finding "deep" caches up to 20 or more feet under proper conditions. Also popular for locating gold, silver and copper ore veins, underground water, and lost caverns and mines. You have the ability to trace buried pipes and cables with the groundplate adapter. Perfect for light commercial use (plumbers and electricians). Not intended for small targets or coins.

This chart is intended to show the most common applications and how the detectors perform. Most detectors are capable of performing any of these tasks; this chart is only a comparison, showing what each model is best suited for.

Suitable For:	555-D	555-D/B	553-D	552-D	551-D	443	443-B	442	442-B	441	441-B	LF 990-D	LF 960-D	LF 930-D	GEMINI II
Relic Hunting	•	•	•	•	•	•	•	•	•	•	•	•	•	•	•
Mineralized Soil	•	•	•	•	•	•	•	•	•	•	•	•	•	•	•
Shallow-Medium Targets	•	•	•	•	•	•	•	•	•	•	•	•	•	•	•
Deep/Small Targets	•	•	•	•	•	•	•	•	•	•	•	•	◻	•	•
Gold Prospecting	•	•	•	•	•	•	★	★	★	★	★	★	•	•	•
Coinshooting	•	•	•	•	•	•	•	•	•	•	•	•	•	•	•
Deep Caches	◻	◻	◻	◻	◻	•	•	•	•	•	•	•	•	•	•
Mining Applications	•	•	•	•	•	•	•	•	•	•	•	•	•	•	•
Pipe Tracing	•	•	•	•	•	•	•	•	•	•	•	•	•	•	•
Competition Hunts	•	•	•	•	•	•	•	•	•	•	•	•	•	•	•

★ When using 3.5" Nugget Coil

◻ Up to 5 ft. using 11" Deep Search Coil

Glossary of Metal Detector Terms

- All Metal—Normal— Mode of operation where the detector will locate all types of metal, both precious and non-precious.
- Conductive— Mode of operation where a signal is actually transmitted through the target, i.e. pipe/cable, and is detected by receiver.
- DST— Dual Synchro Tuning control. Spring loaded center return switch used for tuning and changing mode of operation normal or discriminate with one hand.
- Discrimination— Type of circuit that has the ability to tell the difference between certain objects. Able to reject unwanted targets.
- GNC—Ground Neutralizing Circuit— Stage of circuitry that compensates or cancels mineralized ground effects. Very useful on beaches and other soils where minerals can cause problems to normal types of detectors.
- Ground Plate— Used for tracing pipes/cables (see #2), creates a solid ground for optimum detector output.
- TH'er, TH'ing— Common phrase that stands for Treasure Hunter and Treasure Hunting.
- T/R— Stands for Transmitter/Receiver type of detection circuit. This is where one stage of the circuit transmits a signal, which when bounced back is received by the other stage. When a conductive target interrupts the field, then an audio response will be indicated.
- Trash— Common TH'ing phrase referring to unwanted targets, i.e. bottle caps, pull tabs, foil.
- VLF— Very Low Frequency. This is a T/R type of circuit that is operating between 0 KHz and 30 KHz. Typically more sensitive and with greater depth capabilities than higher frequency type of circuit.



ACCESSORIES

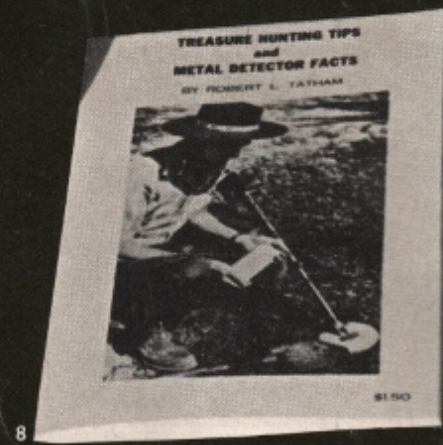
- 1) Stereo Headphones enable you to hear even the slightest instrument response. Lightweight and fully adjustable to size, with a coiled cord and 1/4" plug, which fits all Fisher detectors as well as many others.
- 2) Vinyl Carrying Bags protect your detector against the elements. Comes with handle and shoulder straps. 2-a) For the Gemini II, a vinyl handle bag and a mahogany carrying case.
- 3) Coil Covers provide protection from excessive wear. Sizes available to fit 3 1/2", 8" and 11" coils.
- 4) 3 1/2" nugget coil is highly sensitive to those extremely small objects, ideal for use in small crevices where larger coils won't fit. Invaluable addition for Gold Hunters. For VLF 440 models only.
- 5) 11" Deep Search Coil will detect those treasures you have been missing. Available for all VLF 440 models, 550-D models, and the LF 990-D. Specify model when ordering.
- 6) Fishers' sew on emblems show everyone that you are a proud Fisher owner. The attractive six-color emblems are available in two sizes, 3 x 4" (cap or shoulder) and 6 x 8" (jacket size).
- 7) Body Mount Kit allows you to convert your detector to an easy to use body mount model. Kit includes upper stem section, brackets, straps and extension cable. For use on 440 and 550-D models only. Please specify model when ordering.
- 8) "Treasure Hunting Tips and Metal Detector Facts," by R.L. Tatham, is required reading for beginner and expert alike.

We at Fisher are continually engaged in research related to product improvement. We routinely introduce new production methods, design refinements and new materials into existing products without prior notice. For this reason, any current Fisher product may differ in some respect from its published description, but will always meet or exceed the original design specifications unless otherwise stated.

Your Fisher Dealer;

UNITED TREASURE HUNTERS
 11602 GARLAND ROAD
 DALLAS, TX. 75218
 328-4327 328-1223

UNITED TREASURE HUNTERS
 11602 GARLAND ROAD
 DALLAS, TX. 75218
 328-4327 328-1223



8

