

FISHER **m-SCOPE**®

METAL DETECTORS

From the world's oldest and proudest name in the business.



Fisher Research Laboratory

Since 1931

8 reasons why fisher is the world's oldest and proudest name in metal detectors. . .

1 Design. The meters, lights and numerous adjustments on many other more expensive models are now obsolete in my opinion. Congratulations Fisher, you are way ahead of the competition.

*Dennis A. Traverso
Neptune, New Jersey*

2 Performance

I have tested your detector against a lot of expensive models by burying coins in highly mineralized soil. In the hands of a novice detector user, the 1210-X found them all faster than any other detector.

*George F. Holler
Colorado Springs, Colorado*

3 Value. It's hard to believe that such an economical detector can be so good. Our beaches are searched all year round yet I was able to find many deep old coins with my new Fisher. I can't believe what my old machine had missed and I can't tell you how happy I am with my new one.

*Marion Saunders,
Penticton, British Columbia*

4 Simplicity. Just the ease of operation was worth the price. This area has some highly mineralized soil and my previous detector just couldn't handle it without constant tuning and fine adjustment. My Fisher "X" detector also works very well in extremely trashy areas.

*David Graves
Council Bluffs, Indiana*



Herb Gibbons of Norwalk, California used his Fisher metal detector to find this 4 ounce gold nugget 12 inches deep in a Nevada desert.

Hello Treasure Hunters,

When Dr. Gerhard Fisher began making metal detectors back in 1931, he had no idea what he was starting. He thought his invention was going to be used for industrial and geological purposes. It was, but then someone dug up an old coin or a Civil War relic and a marvelous new hobby was born.

Treasure Hunters from all over the world were soon asking for even better, more advanced equipment. He gave it to them and his reputation grew. Fisher Research Laboratory set the standard for a whole new industry.

IT WAS 1931 AND DR. FISHER HAD NO IDEA WHAT HE WAS STARTING...

We've been raising that standard ever since and if we've learned anything in the last half century it's how to build metal detectors. In fact we've got it down to a science. The models in this catalog are our best yet. They're tougher, lighter, deeper-seeking and easier to use than anything we've ever done. Test one. If you've never used a metal detector before, you're in for an exciting surprise. If you're an experienced Treasure Hunter, you'll immediately appreciate the design, performance and quality of these finely crafted, precision instruments.

Happy Hunting

A handwritten signature in black ink that reads "Jim Lewellen".

Jim Lewellen, President
Fisher Research Laboratory

5 Quality. We just bought another Fisher because of the old one's good service. We bought it in the 60's and it still works just as good as the day we bought it.

*Mary R. Cadwallader
Ft. Lauderdale, Florida*

6 Reputation.

Thanks for the literature and slides, I will incorporate them in my metal detection classes. It is my desire to display and demonstrate the finest equipment on the market to law enforcement. I am well aware of the fact that Fisher Research Laboratory is the oldest metal detection company in the world and continues to be one of the innovators in this exciting field.

*Richard K. Graham
Special Agent
Federal Bureau of Investigation*

7 Service. Recently, yours truly had a problem with his 1265-X. I sent it UPS 2nd Day Air on Oct. 18 to your plant in Los Banos, California. You replaced both circuit boards and I got it back Oct. 29, no-charge. It works great! Thanks Fisher for a fine service department.

*Gene L. Lyons
Springfield, Missouri*

8 Results. We recently went to an old fort out west that had been hunted for over 20 years by the best detectors on the market. We found bullets, buckles, insignias, buttons, etc. In fact we found so many relics in a day and a half with our Fisher that we were exhausted. It works fantastic!

*Duane Linduff
Miami, Oklahoma*



Wallace Chendler used a 1280-X in shallow water to find these gold rings. The blue sapphire in the center has been appraised at \$25,000.



These are just a few of the hundreds of old silver coins Art Schroeder of Brookfield, Illinois has found with his 1260-X.

Fisher Research Laboratory, 1005 I Street, Los Banos, CA 93635 Ph. (209) 826-3292

FISHER m-SCOPE 1265-X Fisher's finest

For coin shooting, relic hunting, prospecting, mineralized soil, trashy soil, shallow water, wet sand or just about anything you might want to use a metal detector for.

This is the finest, most versatile detector we've ever made.

Here's why . . .

DEPTH. Real depth. Not just the kind you get in air or non-mineralized soil. Or by complicated critical tuning. Or by whipping the search coil back and forth. The automatic 1265-X goes deep in bad soil as it rejects bad targets. It's our deepest seeking discriminator ever and we've been in the business for over half a century. Just think . . . If you're not using one you may be just scratching the surface!

VLF-SLOW MOTION DISCRIMINATION.

Another Fisher first. Ignore ground minerals and trash automatically while you search at just about any speed you want. Slow enough for pinpointing, fast enough for competition hunts.

ZERO MOTION PIN-POINTING. For exact target location, simply place the coil on the ground and pull the trigger. The 1265-X instantly tunes to ground conditions and you're in an all-metal, no-motion pinpointing mode.

DUAL RANGE SENSITIVITY CONTROL.

For mineralized soil or electrical interference just push the knob in and adjust for optimum performance. For extreme depth in problem-free areas, pull the knob out and turn it all the way up.

DUAL DISCRIMINATION. Introduced to the world on Fisher's legendary 1260-X. Search at any level of trash rejection and instantly switch to any other level. If you've found "notch discrimination" or "probable target I.D." meters confusing or inaccurate, you'll really appreciate this simple method to help tell the trash from the cash.

SILENT, AUTOMATIC OPERATION. No tuning control, no ground adjust, no threshold tone, no gimmicks. Just turn it on and go. High performance metal detection so advanced it's simple!

OPTIONAL EQUIPMENT. • 11 inch coil. Covers more ground faster and deeper. • 3 3/4 inch coil. Zeros in on good targets closer to large metal objects or in extremely trashy areas • Home-Auto Recharge Kit. Plugs right into the control housing for an overnight charge.

MORE. If that's not good enough, here's 9 more reasons why this is the finest detector we've ever built • Only 4 pounds • Near perfect balance • Cushioned Arm Rest and Grip • Double Locking Fiberglass Shaft • Instant Battery Check • Quartz-Crystal Locked Circuitry • Long Battery Life • Built-In Detector Stand • 5 Year Warranty backed by the oldest name in the business.



My Dealer and I went to a park where he had a deep dime buried. Two top of the line, top brands would not pick it up. Not only would the 1265-X pick it up, you could raise the loop several inches and still get a good signal. Very impressive! I think a lot of us have been caught up with gadgets instead of performance but I'm happy to say I've seen the light.

Bob Roach
Akron, Ohio

3

-Comparison Chart-

See back inside cover for comparison chart listing controls, features and specifications for all models.

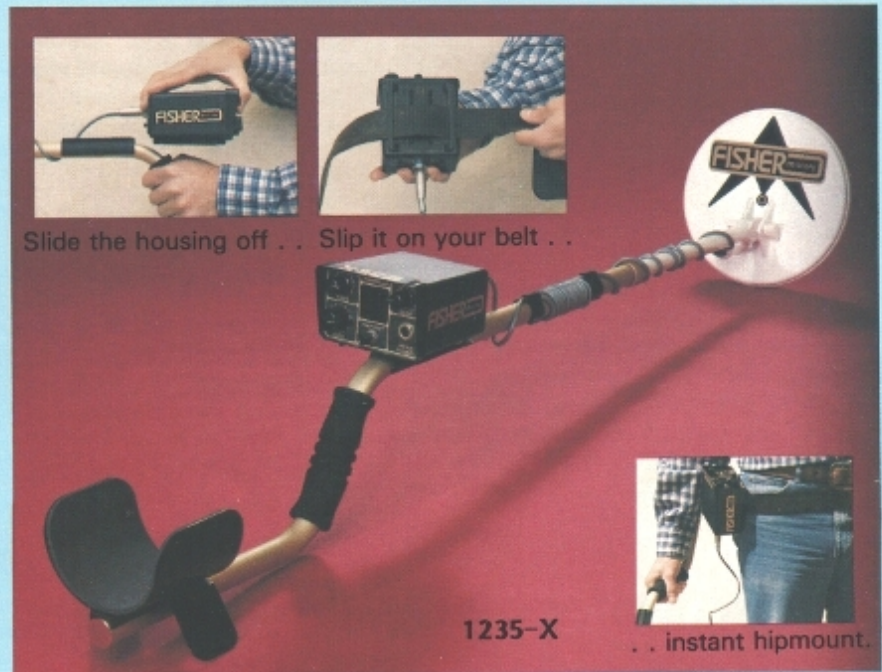
- Silent, Automatic Operation.
- VLF-Slow Motion Discrimination.
- 5 Year Limited Warranty.

Fisher's X Treasure Hunting so

FISHER M-SCOPE 1235-X

Hipmount or handle mount with a frequency shift and zero-motion pinpointing.

Fisher's newest X detector is lightweight, easy to use and goes deep. But that's just for starters. It has a combination of features and performance you just won't find on any other detector. Like the frequency control which eliminates interference from nearby detectors. Or the instant ground reject, no-motion pinpoint mode. Or the compact, rugged control housing which slips off the handle and onto your belt. Want more? Then how about a double locking fiberglass shaft, drop-in battery compartment, built-in detector stand, powerful deep-seeking ground reject circuitry and the ability to pick out deep targets closer to trash. The optional 11 inch coil goes even deeper. All of this plus the quality, value and durability you would expect from the oldest name in the business. *Perfect for competition hunting!*



FISHER M-SCOPE 1260-X

If you won't settle for less than the original, here it is.

Just about everyone agrees, Fisher's 1260-X changed metal detectors forever. It was the 1260-X that first allowed Treasure Hunters to forget about tuning and concentrate on hunting. It was the first of a new and exciting breed featuring high performance VLF-Slow Motion Discrimination, automatic tuning, automatic ground adjust, twin discrimination modes and silent no-threshold operation. The unique handle was designed for comfort, strength and balance. The padded grip, padded arm rest, double locking stem, trigger mode switch, built-in recharge circuitry and built-in detector stand all set new industry standards. It's no wonder Fisher was awarded a patent and followed up with an entire line of X detectors. Get your hands on a 1260-X and see what all the excitement is about.



- Free Test Reports -

Reprints of magazine test reports are available for most models. Check with your local dealer or write Fisher Research Laboratory, 1005 I Street, Los Banos, CA 93635.

My daughter has a 1210-X, my wife a 1260-X and I use a 1220-X. Between us we have found gold nuggets, gold rings, relics and thousands of coins.

*Geoff. G. Matthews
Moorabbin, Australia*

I've been a Fisher user for 40 years, they're the best.

*Edwin A. Cody
Anniston, Alabama*

Detectors. advanced it's simple.

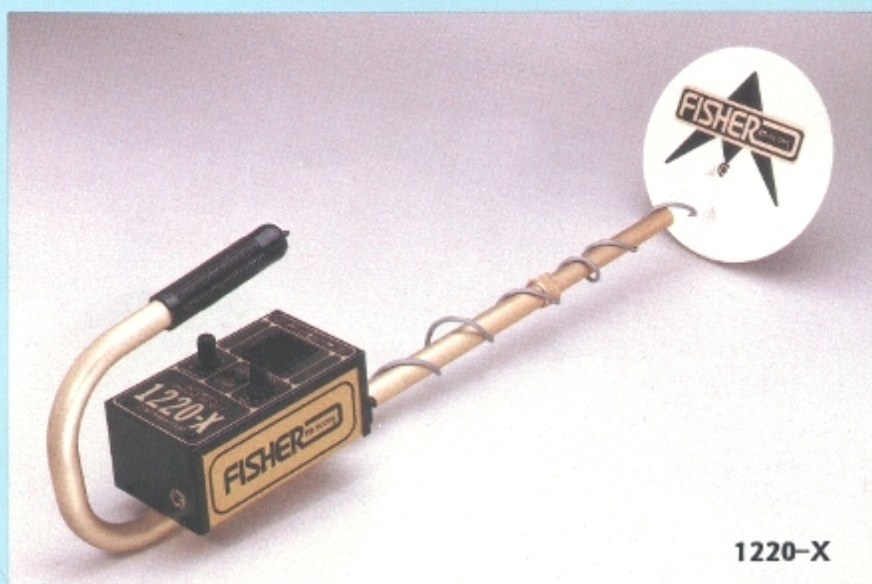
- No tuning. No ground adjust
- No threshold tone
- No nonsense



FISHER TM-SCOPE 1210-X

One knob, high performance, low cost.

Don't let the low price fool you! The 1210-X is so simple and performs so well that it's the first choice for a lot of experienced detector users. Just turn it on and start searching. Only one knob, one battery and 2.8 lbs. Yet it goes almost as deep and discriminates almost as well as our more expensive models. Like all X models, the 1210-X is a VLF-motion discriminator designed to work at fast or slow sweep speeds. Fast enough for competition hunts, slow enough for pinpointing. Unlike the other models, the 1210-X has no battery check, sensitivity control, optional recharge kit or optional coils. But you'll go a long way trying to find a detector in this price range that matches the performance, reliability and quality built into every 1210-X.



FISHER TM-SCOPE 1220-X

One of our most popular detectors ever and with good reason!

Two knobs, one switch and lots of versatility. Just push the handle mounted toggle switch to the left for automatic VLF-Discrimination. Move it to center position for all-metal detection and to the right for instant battery check. Adjust the sensitivity control for optimum performance in wet sand, mineralized ground or areas of electrical interference. And like all X detectors, you can set the discrimination control at 4 to reject small nails. Set it at 6 and you'll lose some of the good stuff (nickels and small gold rings) but you'll reject pull tabs. Set it at 10 and you'll reject just about all small trash and you'll still detect coins, jewelry and other valuable items. Try the hot little 3 3/4" search coil in super trashy areas, you'll find good targets where many other detectors become useless.

You put a few other detectors to shame when compared to my 1210-X. While the other guys are trying to tune and ground adjust their detectors, I'm busy digging up coins. Good job Fisher! Thanks for making me a proud and successful Treasure Hunter.

*Christopher P. Williams
Portland, Oregon*

- Operating Manuals -

Want to know even more about a particular model before you buy? Operating manuals are available from the factory for \$2 each. Free with purchase.

**DESIGNED FOR ONE PURPOSE:
FIND SMALL, GOLD NUGGETS
IN HIGHLY MINERALIZED SOIL!**

GOLD



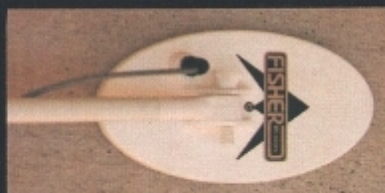
NUGGET DETECTOR

New from the search coil on up. The Gold Bug was designed to do one thing and one thing only; find small bits of gold in highly mineralized soil. And it will. Better than anything we've ever built. Better than anything we've ever tested. And it does it in traditional Fisher no-nonsense fashion. No meter, no tuner, no extra knobs, no gimmicks.

The Gold Bug has three all metal operating modes: Motion, Auto Tune and No Motion. The highly sensitive Motion Mode is used in most nugget hunting situations. The Auto-Tune mode (a different type of motion mode) is for extremely mineralized soil. The No-Motion mode is for pinpointing, checking out tight spots or searching in non-mineralized soil.

The Gold Bug has other important features. Like drop-in batteries, fiberglass, double-locking stem, optional search coils, arm rest and a lot more. But the most important thing about it is that it will find gold and it's backed by the oldest and proudest name in the business.

When this catalog went to press, Gold Bug wasn't in production yet. But, two years of engineering, lab tests, field tests, design and redesign were complete. Check with your Dealer for availability.



Unique, lightweight 10 inch elliptical search coil custom designed for the Fisher Gold Bug.



Only three controls and two switches do it all. The dual knob ground reject control has a small single turn coarse adjust knob and a large sixteen turn fine adjust.



The Gold Bug has a built-in belt loop for quick body mounting. Just slip the control housing off the handle and onto your belt. The handle and loop assembly is so comfortable and light, you'll be able to swing it for hours on end.



LAST MINUTE CHANGE
Threshold Tuning Control
For optimum Auto-Tune and no-motion mode operation. Located on the rear of the control housing.

- Trademarks -

"M-Scope" and "Fisher M-Scope" are registered trademarks

- Patents -

The Fisher Gold Bug and all 1200-X Series detectors are protected by U.S. Patent 4,514,692. Other patents pending.

Thanks for letting me test a Gold Bug prototype. I'm a Fisher Dealer so I may be prejudiced, but the Gold Bug is the best nugget machine I've ever used. And I've used them all!

*Irwin Lee
Turlock, California*

**RUGGED HIGH QUALITY
PROSPECTING EQUIPMENT
AT REALISTIC PRICES.**

FEVER!

MOTHER LODGE

NUGGET DETECTORS

A lot of the gold nuggets found with metal detectors in recent years have been found with Fisher VLF-660 Mother Lodes. Both models are proven gold finders but they're also used by relic hunters, black-sand beachcombers and professional Treasure Hunters looking for deep targets in highly mineralized soil.

Tough no-frills construction, no meter, no automatic tuning, no discrimination, no motion. But you'll get up to 60 hours on a set of batteries and you'll find nuggets in soil other detectors won't even work in.

The Pro Model comes with an extra long cable and nylon straps for body mounting. Both models feature double locking fiberglass lower stems and optional 3½" and 11" coils. Use the small coil for tight spots, extremely mineralized soil or when searching for very tiny nuggets. The 11" coil covers more ground with each sweep and goes 10% to 20% deeper than the standard 8" coil.

The operating manual was written by a well-known prospector and is full of no-nonsense advice and practical tips. Best of all is the price. You can pay a lot more for a nugget detector but before you do, check out a Fisher VLF-660 Mother Lode.



GOLD BUG

On a recent trip north of Wickenburg, Arizona, three of us using VLF-660s found 43 nuggets totaling 9 ounces. It'll be hard to improve on the 660 Mother Lode.

*Carl Fischer
Chino, California*



VLF-660 PRO MOTHER LODGE



VLF-660 MOTHER LODGE

**There's no cure for gold fever, if you've got it,
do it right with a Fisher nugget detector.**

- Industrial Detectors -

Fisher Research Laboratory also manufactures a full line of industrial instruments including pipe and cable locators, valve and box locators, leak detectors, cable fault locators and water level indicators. Write for a free brochure.

FISHER M-SCOPE 1280-X Aquanaut

Automatic deep seeking metal detector for sea, surf or shore.

If you've avoided underwater metal detectors because they're hard to use, unreliable or outrageously expensive, check Fisher's VF-1280-X Aquanaut. It's a whole new ball game!

Easy to Use. Only three knobs. Set them and forget them. Foam grip and adjustable arm rest. Only slight motion required for positive response and quick pinpointing. Control box unsnaps for easy hipmounting.

Leak Proof to 250 Feet. Use in salt water, fresh water or on land. Glass-bead epoxy filled 8 inch search coil, fiberglass shaft, injection molded high-impact ABS control box. This is the toughest detector we've ever built!

Advanced technology. Stable, drift free operation powered by Quartz-crystal

locked electronics operation **below** the VLF Frequency range. Patented trash rejection circuitry automatically ignores salt and ground minerals. Battery life is approximately 40 hours.

Standard equipment includes carrying case, waterproof headset and belt clip. Home/auto recharge kit is optional.

For today's sport diver, beachcomber, or professional treasure hunter.



Need the name of your nearest Dealer?

Write Fisher Research Laboratory, 1005 I Street, Los Banos, CA 93635. PH (209) 826-3292

Using my 1280-X Aquanaut last year I found 524 silver coins; 229 assorted gold, silver, sapphire and diamond rings; and 75 miscellaneous gold or silver chains, bracelets, medallions, buckles, crosses, etc. All in shallow water.

*Wallace Chandler
Michigan*

FISHER m-SCOPE GEMINI II ^{2 Box}

Find large, deep objects four ways with Fisher's versatile 2-Box metal detector.



It doesn't look like an ordinary metal detector and it's not!

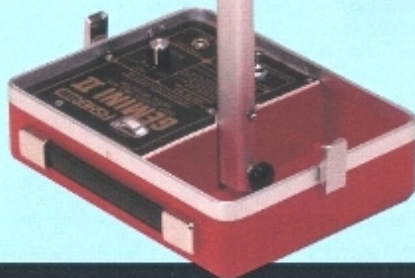
The Gemini II was designed to find large deep objects. Like an iron chest. Or an ore vein. Or a buried pipe. Depending on target size and ground mineralization, the Gemini II will locate objects as deep as twenty feet or more.

This professional instrument has been used successfully for years by prospectors, Treasure Hunters, geologists and public utility companies. In fact, Fisher has been producing 2-Box metal detectors longer than any other company in the world. The state-of-the-art Gemini II is the product of that proud heritage.

Under lightly mineralized soil conditions, objects may be located at the depths shown.

SIZE	DEPTH
4 Sq in	1 ft.
1 Sq ft	6 ft.
2 Sq Yds	22 ft.

Actual depth will be determined by factors such as ground mineralization, operator skill and metal type.



- Treasure Caches
- Ore Veins
- Old Dump Sites
- Buried Pipes
- Buried Cable

1. INDUCTIVE TRACE



• Just place the transmitter over an ore vein or buried pipe and trace its path with the receiver.

2. CONDUCTIVE TRACE



• Using the optional ground plate, the transmitter is connected directly to an exposed pipe or cable for accurate long distance tracing.

3. WIDE SCAN INDUCTIVE SEARCH



• Two-man operation for searching a large area fast. Locate ore veins, pipes, cable or any metallic object over 30 feet long.

4. NARROW SCAN INDUCTIVE SEARCH



• Maximum penetration for objects far beyond the reach of ordinary metal detectors.

I have an old Fisher 2-Box Explorer model which I've owned for 22 years. Haven't struck it rich yet but it pays my expenses and I have a lot of fun. I'm 71 years old and get out every chance I can.

I found a one foot wide, 85 foot long vein of native silver with my Fisher 2-Box.

*Henry E. Keltner,
Shawnee, Oklahoma*

*Bill Sorrento,
Lake Elsinore, California*

- Fisher Dealerships Available -

If you want your hobby to pay off in more ways than one, you may qualify for a Fisher Dealership. Write for details.

FISHER M-SCOPE FX-3 Iron Finder

Differential Induction Magnetometer



FX-3 Ferro Probe

Fisher's FX-3 Ferro Probe has been designed to locate iron and steel relics, property markers, pipes and other large ferrous objects buried beyond the reach of ordinary metal detectors. It responds only to the magnetic field of ferromagnetic objects, ignoring all other materials (copper, aluminum, etc.). As a target is approached the FX-3 responds with an increase in pitch and volume then nulls directly over the target.

The FX-3 is extremely sensitive to objects with large surface areas, highly magnetized objects and long objects buried vertically.

- Detects ferromagnetic objects only (iron and steel), ignores all other metals.
- Finds smaller targets than a "2-Box" detector yet more depth on large targets than ordinary search coil type detectors.
- Slow motion circuitry with VCO audio output.

Approximate Penetration Data

Nail, 3 1/2" Long	3"-6"
Pipe Section, 3/4" Dia X 18" Long	10"-20"
Property Marker	12"-48"
Gas Can, 2 Gal, 9 1/2" X 7"	20"-30"
Gas Line, 2" Dia X Indefinite Length	30"-50"



FISHER M-SCOPE VLF-920 Ca\$h Finder

Fisher quality and performance in a low cost metal detector.

We recommend the VLF-920 CA\$H FINDER for beginners, backpackers or just about anyone interested in a lightweight, low cost detector. It's super easy to use because it has no discrimination mode. It won't tune out small pieces of trash but it will reject ground minerals and it will find all kinds of metals. And it does it with only two knobs and two cheap batteries.

It's rugged, it's good looking and it's well balanced. Tuning is a snap, pinpointing is quick and the 8" search coil is waterproof. If you want a good basic metal detector and you don't want to spend a lot of money on it, look no further. We designed the VLF-920 for you.

One search mode. Two knobs.
Three pounds. Lots of fun!

- Detects all metals
- [2]9V Batteries
- Headphone Jack
- Only 3 Pounds
- Easy to use
- Grnd. Reject Control
- Waterproof Coil
- 10 Turn Tuner
- 20 Hrs. Bat. Life



VLF-920

FISHER M-SCOPE V-150 A.C. Voltage Detector

Safety Tool



ON THE JOB

AT HOME

IN THE SHOP

Originally designed for Fisher's prestigious line of industrial instrumentation, the V-150 has become popular in the home, in the workshop and on the job.

- Detects and traces A.C. Voltages from 60V to 150,000V whether or not current is flowing and without physical contact.
- Detects poorly grounded cables, tools and appliances.
- Detects dangerous electrical leakage to ungrounded housings of tools and appliances with 2 prong plugs.
- Safe and simple on-off operation.
- 200 hour battery life.

WRITE FOR FREE SPEC SHEET

This is a fantastic hobby for retired people. I've been using my Fisher for 2 years with excellent results; 11,986 coins, many pieces of gold and silver jewelry and a lot of Civil War relics.

*E. W. Ruff
Atlanta, Georgia*

I'm 71 years old and legally blind but as long as I can feel, I'll use my Fisher. Fisher is the best, to heck with the rest.

*Chancey L. Conaway
Roseburg, Oregon*

- Fisher World Treasure News -

Articles include profiles of successful Treasure Hunters, Underwater Treasure Hunting, recent valuable finds and a special section titled Treasure Hunters and the Law. Write for a free subscription.

FISHER FEATURES⁽¹⁾

		GROUND REJECT DISCRIMINATORS					ALL METAL DETECTORS			IRON ONLY				
		1280-X	1265-X	1260-X	1235-X	1220-X	1210-X	VLF-920	VLF-666PRO	VLF-660	GOLD BUG	GEMINI II	FX-3	
OPERATING MODES	MOTION	VLF Discrimination/All Metal			(2)	(2)	•	•	•					
		VF Discrimination/All Metal	•											
		VLF-All Metal, Search												
		VLF-All Metal, Auto Tune											•	
		Iron and Steel Only												•
	NO MOTION	VLF-All Metal, Pinpoint		•			•							
		VLF-All Metal, Search and Pinpoint							•	•	•	•		
		TR-Narrow Scan Inductive Search											•	
		TR-Wide Scan Inductive Search											•	
		TR-Conductive Trace											•	
TR-Inductive Trace											•			
CONTROLS	Ten Turn Tuner							•	•	•				
	Single Turn Tuner				(3)									
	Dual Discrimination Controls		•	•										
	Single Discrimination Control	•				•	•	•						
	Single Turn Ground Reject Control							•						
	Dual Knob Coarse-Fine Ground Reject Control								•	•	•			
	Volume Control	•	•	•					•	•	•			
	Push-Pull Dual Range Sensitivity Control		•						•	•				
	Sensitivity Control	•				•	•					•	•	
	High-Low Range Switch											•		
	Frequency Shift											•		
	Battery Check	•	•	•	•	•	•		•	•	•	•	(4)	
	Toggle Mode Change on Handle Grip						•					•		
	Mode Change Switch on Panel					•						•		
	Trigger Mode Change		•	•										
Push Button Retuner											•			
SPECIAL FEATURES	"Two-Box" Design											•		
	Body Mount	•				•		•			•			
	Handle Mount	•	•	•	•	•	•	•	•	•	•	•	•	
	Stereo-Mono Headphone Jack ¼"	•	•	•	•	•	•	•	•	•	•	•	•	
	Ground Plate Jack	•										•		
	Built-in Battery Recharge Circuitry and Jack		•	•										
	Built-in Detector Stand		•	•							•	•		
	Automatic Ground Rejection	•	•	•	•	•	•	•					•	
	Automatic Tuning	•	•	•	•	•	•	•					•	
	Silent No-Threshold Operation	•	•	•	•	•	•	•					•	
	Double Locking Shaft								•	•	•			
	Fiberglass Shaft	•	•	•	•	•	•			•	•	•		
	Foam Grip	•	•	•	•	•	•					•		
	Arm Rest	•	•	•	•	•	•		•	•	•			
	Signal Strength Meter											•		
	Light Emitting Diode Target Response	•												
	Piezo Electric Custom Waterproof Headset	•												
	Quartz Crystal Locked Circuitry	•	•	•	•	•	•					•		
	Patented "Double Derivative" Circuit	•	•	•	•	•	•	•				•		
	VCO Audio Target Response (5)						(8)					•	•	
	Drop-In Battery Compartment (no wires)						•					•		
	Completely submersible (salt or fresh water)	•												
	Automatic Battery Check												•	
	Gold Seal Limited Warranty . . . Years		5	5	5	5	5	5	2	5	5	5	5	5
	BATTERIES	1.5 AA Penlight	Quantity	8	8	8		8			12	12		
9V Transistor		Quantity				2		1	2			2	1	
9V Neda 1603		Quantity										2		
Optional Home/Auto Recharge Kit														
Battery Life Carbon-Zinc - Approx. Hrs:			40	25	20	20	24	13	20	60	60	20	45	25
SEARCH COILS	STANDARD	Waterproof	•	•	•	•	•	•	•	•	•	•	(6)	
		Detachable	•	•	•	•	•	•	•	•	•	•		
		Electro-Static-Insulated (E.S.I. Shielding)	•	•	•	•	•	•	•	•	•	•		
		8" Diameter	•	•	•	•	•	•	•	•	•	•		
	OPTIONAL	10" Elliptical	•	•	•	•	•	•	•	•	•	•		
		3 ½" Diameter								•	•			
		3 ¾" Diameter	•	•	•	•	•	•	•			•		
		11" Diameter	•	•	•	•	•	•		(7)	•			
14" Elliptical	•	•	•	•	•	•								
MISC	Search Frequency KHz	KHz	2.4	4.8	4.2	5.5	4.2	4.2	4.5	4.5	4.5	19.2	82	
	Audio Output Frequency		400	370	370	(8)	370	370	450	450	450	(8)	270	
	Weight	Approximate	4.6	4.0	4.0	3.1	3.5	2.8	3.0	5.1	4.5	2.7	9.2	2.5
NOTES	1. Subject to improvement, modification or change without notice.													
	2. THE 1260-X and 1285-X has two identical VLF-Discrimination/All Metal modes.													
	3. For optional threshold tone only.													
	4. Automatic audio battery check. No separate control.													
	5. Voltage Controlled Oscillator responds to target with increasing audio frequency and volume.													
6. Waterproof probe.														
7. Special order only. Non-detachable.														
8. 370 KHz motion mode. VCO pinpoint mode (see note 5).														

1. **LITERATURE.** You can't read too much about Treasure Hunting if you're serious about it. Jim Martin's "Recreational Gold Prospecting" is required reading if you're looking for gold. H. Glenn Carson's "Coin Shooting II" is 96 pages of no-nonsense advice from a world famous Treasure Hunter. "The Prospector's Guide" is a layman's guide to the discovery and identification of valuable minerals ores and rocks.

Operating manuals are free with the instrument but if you want to know more about a particular model before you buy, manuals are available for \$2.00 each. Free magazine reports are available for most models.

2. **ARM PATCH, CASH-TRASH APRON AND BASEBALL CAP.** All with the legendary M-Scope logo for the Fisher Treasure Hunter who's proud to be one. The cash-trash apron has two pouches, one for good stuff, one for junk.

3. **FREQ BOX.** A must for competition hunting or working in groups. Six position Frequency Switch eliminates interference from nearby detector. (For 1220-X and 1260-X only. 1235-X has built-in frequency change circuitry).

4. **STEREO HEADPHONES.** If we could only recommend one accessory, this would be it. Reduces background noise, prolongs battery life and most importantly, lets you hear those faint, deep targets, 8 ohm matching impedance, padded headband, soft leather earpads, dual volume controls, monostereo switch, 10 foot coil cord. A perfect match for any Fisher metal detector.

5. **TARGET LITE.** For the hard of hearing. Plugs into the phone jack and replaces the audio response with a bright red light emitting diode. For 1260-X and 1265-X models only.

6. **GEMINI II ACCESSORIES.** Tough carrying case, vinyl handle bag and a Ground Plate for tracing pipes in the Conductive Trace Mode.



FOR THE FULLY EQUIPPED TREASURE HUNTER



7. **SEARCH COILS.** Little coils, big coils, weighted coils. With cable lengths from 3 to 25 feet. Use the small discriminator coils (1200-X series) to zero in on good targets in extremely trashy areas. Use the little nugget coils (VLF-660 and Gold Bug) for tiny nuggets or in mineralized ground where bigger coils just won't perform. The large coils will go 10-20% deeper on coin sized or larger objects and the wider scan covers a lot more ground with each sweep. All are waterproof but the weighted coils make shallow water Treasure Hunting even easier.

8. **CARRYING CASES AND BAGS.** A hard carrying case is standard equipment for the FX-3 and the 1280-X. They're optional on all other models. A rugged, good looking vinyl bag is also available. (11" coil will not fit in the hard carrying cases.)

9. **DETECTOR PROTECTORS.** Experienced Treasure Hunters know that the closer they get the search coil to the ground, the more targets they recover. They also know that once a coil bottom has worn through it's usually beyond repair. That's why they use these lightweight, inexpensive snap-on covers.

10. **BELT POUCH AND ACCESSORY BAG.** A single, deep pocket belt pouch to drop your treasures in and a large bag for headphones, coils and digging tools. Both made of tough, heavy duty vinyl with the Fisher logo.

11. **BATTERY RECHARGE KITS.** For the 1220-X, 1260-X, 1265-X and 1280-X. Can be plugged into a wall socket or 12 volt negative ground auto cigarette lighter.

CONVERTER. For the traveling Treasure Hunter. Converts 220/240 volts to 110/120 volts for the Fisher battery rechargers.

Fisher Research Laboratory
1005 I Street
Los Banos, CA 93635-4398

BULK RATE
U.S. POSTAGE
PAID
F.R.L.

LUX Instrument Co.
311 S. Valley View, G-102
Las Vegas, NV 89102
(702) 364-0064