

# FISHER 1270

ANNIVERSARY

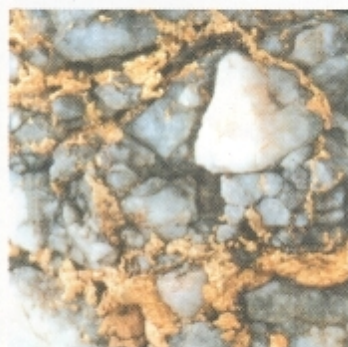
## SPECIAL 70TH ANNIVERSARY EDITION RELIC & COIN



### metal detector

*The Best of the Best.*

Extreme depth with even better sensitivity to relics. Plus, improved iron discrimination that will take you to targets nothing else has ever seen. 70 years in the making. You've been waiting... this is it!



Building on the tradition of performance and quality in Fisher's 1200 series metal detectors, the 1270 is the pinnacle in a line of superior detectors. It's sensitivity to relics is now better than ever and it's the one to beat in target depth. The 1270 also provides you with a toolbox of easy to use features that will give you an advantage in every treasure hunting situation: like a high resolution iron discrimination mode that enables you to "see through" iron trash like never before, a precision ground balance adjustment for difficult soil conditions, and a "silencer" mode for quiet discrimination. Also, there's a trigger switch for pinpointing and mode changes designed to save you time. After all, you'll need that extra time to recover all your treasure.

Backed by Fisher's **LIFETIME WARRANTY\***

### CONTROLS

**POWER ON-OFF/ VOLUME;** OFF/ON switch; adjust knob for desired volume.

**IRON DISC;** High Resolution Iron Discrimination knob for improved target "see-through" in iron trash.

**NORMAL DISC;** Full Range Discrimination knob for normal search mode.

**ALL METAL GROUND ADJ/DISC;** (switch in OFF position) - Disc. mode. (switch in ON position) - all metal mode; adjust knob to ground balance.

**SENSITIVITY;** Adjust knob for optimum target sensitivity. Full clockwise position provides a low audio threshold.

**SILENCER;** Switch ON for silent discrimination, OFF for standard discrimination.

**IRON;** switch for iron disc. mode, OFF for normal search mode.

**TRIGGER SWITCH;** Three-position, spring-loaded trigger switch; center position for primary search mode, push for secondary search mode, pull for pinpoint.



### FEATURES

Three Search Modes - normal discrimination, enhanced iron discrimination, and all-metal ground balanced search

Patented Double Derivative, Crystal-Locked Electronics (U.S. Patent # 4,514,692)

Enhanced Relic Sensitivity

"Cutting Edge" performance in moist soils

Improved "See-Through" in iron trash

Sensitivity Control to enable silent search or audio threshold

Silencer for silent (3<sup>rd</sup> derivative) discrimination

Trigger Switch mode change

Trigger Switch Zero-Motion Pinpointing

Near Perfect Balance for comfortable use

Lightweight Cushioned Arm Rest & Grip

Low Battery Alert - LED blinks automatically

Drop-in batteries

Double locking lower stem

3 piece breakdown handle

Limited Lifetime Warranty \*



CALL 1-800-M-Scope-1 • 1-800-672-6731 • for a dealer near YOU

# FISHER

m-SCOPE

[www.fisherlab.com](http://www.fisherlab.com)

Fisher Research Laboratory  
Detectors & Locators Since 1931

# FISHER RESEARCH LABORATORY

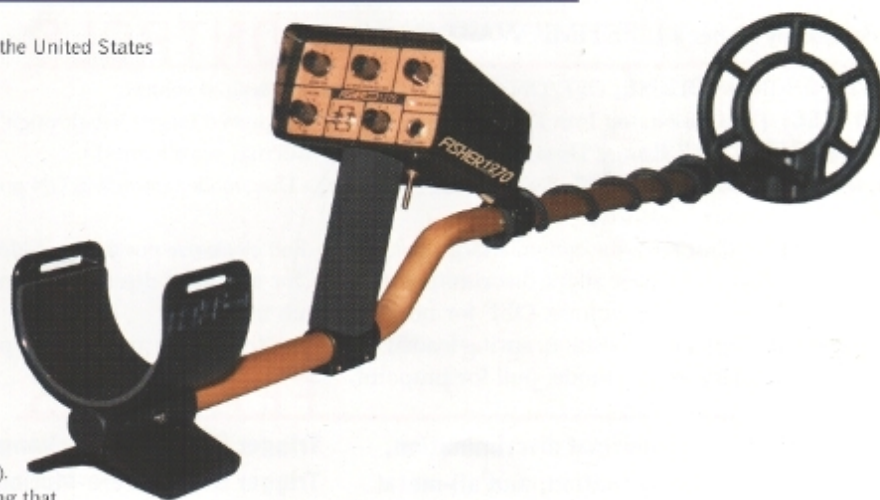
# FISHER 1270

ANNIVERSARY

## SPECIFICATIONS

Subject to improvement, modification or change without notice.

<b>WEIGHT</b>	3.5 lbs.
<b>LENGTH</b>	Extended ..... 52" <sup>2</sup> Collapsed ..... 42" <sup>2</sup>
<b>FREQUENCY</b>	VLF-Search ..... 8.2 KHz, Quartz Crystal Controlled Audio Target Response ..... 512 Hz Unipolar <sup>3</sup>
<b>SEARCH MODES</b>	Normal Disc ..... VLF-Slow Motion Discrimination <sup>4</sup> Iron Disc ..... VL F-Slow Motion Discrimination <sup>4</sup> Ground Balanced ..... VLF-Slow Motion All Metal Pinpoint ..... VLF All Metal, No-Motion No Threshold Operation ..... Yes <sup>5/6</sup>
<b>OUTPUTS</b>	Low Battery Alert ..... Automatic (LED) Built-in Speaker ..... Yes Stereo Headphone Jack ..... Yes
<b>SEARCH COILS</b>	Type ..... Concentric, Co-planar Spider Coil Diameter ..... 8" Shielding ..... 100% E.S.I. <sup>7</sup> Interchangeable ..... Yes Submersible ..... Yes
<b>BATTERIES BATTERY LIFE</b>	(2) 9 Volt Carbon Zinc ..... 15-25 hours <sup>2</sup> Alkaline ..... 30-40 hours <sup>2</sup>
<b>WARRANTY</b>	Lifetime Limited Warranty* <sup>7</sup> *warranty may vary outside of the United States See your dealer for details



## NOTES

1. Subject to modification without notice.
2. Approximate.
3. PULSEGATE UNIPOLAR AUDIO PROCESSING.  
Advanced Fisher circuitry which allows silent operation below the "Audio-Threshold Tone" with no sensitivity loss. (See Note 6 also).
4. The 1270 is a "motion" detector while in the search modes, meaning that the search coil must be moving at least slightly to detect a target.
5. Electro-Static-Insulated to eliminate certain types of false signals.
6. The 1270 can operate silently with no "Threshold Tone" (See Note 3); however, in the "maximum" sensitivity position, a low audible threshold is provided.
7. Fisher does not warrant suitability to specific use. Fisher shall in no event be liable for any direct or, incidental, consequential or indirect damages.

## ACCESSORIES

### STANDARD EQUIPMENT

8" Search Coil  
Operation Manual

### OPTIONAL EQUIPMENT -

5" Search Coil  
10.5" Search Coil  
Coil Covers

Carry Bag  
Hard Carrying Case  
Fisher Phones  
Stereo Phones

## ORDERING INFORMATION Call 1-800-M-Scope-1 • 1-800-672-6731 • for a Dealer Near You

### For More Information Contact:

**FISHER RESEARCH LABORATORY**  
200 W. Willmott Rd., Los Banos, CA 93635-5501  
Tel 209.826.5292 Fax 209.826.0416  
www.fisherlab.com email: info@fisherlab.com

### Inquiries outside of the U.S. Mexico & Canada Contact:

**FISHER EXPORT DEPARTMENT**  
P.O. Box 1896, New Haven, CT 06508, USA  
Tel 203.288.1638 Fax 203.287.8099  
email: mb@exportdept.com

