

1980 METAL DETECTOR CATALOG

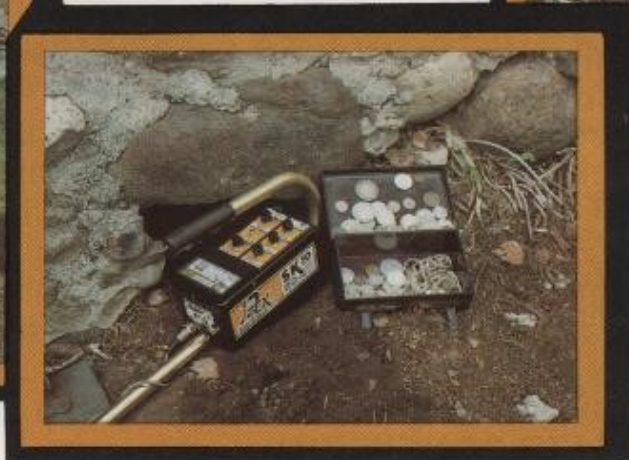
1 D TEX

ELECTRONICS

614 Easy St. • Garland, Texas 75042
Phone AC 214 272-4451



COIN HUNTING



CACHE HUNTING



RELIC HUNTING

Treasure Hunting

INFORMATION

UNITED TREASURE HUNTERS
11602 GARLAND ROAD
DALLAS TX. 75218

**ALL NEW
PRODUCT LINE**
redesigned by treasure hunters



WE SELL TREASURE HUNTING!

What flavor do you want? We have "coins from the local park," "cannonballs from an ancient battlefield," "a Mason jar of gold and silver coins from a long-dead pioneer's post-hole bank," "gold nuggets from a cold California stream," "Pieces of Eight from a 1700's shipwreck on a Florida beach," "gold bars from an old Spanish treasure cache," and even "the great outdoors with invigorating fresh air, exercise and sunshine." All of these "treasures" can be put within your reach through our equipment and our expertise.

Treasure Hunters make up one of the friendliest and most interesting groups of people in the world! We love being part of this outdoors fraternity and extend an invitation to you to come join us!

A Promise

WE WON'T CREATE CONFUSION

WITH UNPROVABLE ADVERTISING CLAIMS ABOUT OUR EQUIPMENT OR OUR PROGRAMS. This catalog and all our literature will lay out the information you need in clear, matter-of-fact language. If a detector costs \$400, we will say \$400, not \$399.95! Please grant us the courtesy of testing and comparing our detectors against other brands who make strong (sometimes incredible) performance claims. While advertising is informative, it can also be misleading. If you buy based only on written information in **any** company's catalog you could be disappointed. Be safe—**Test and Compare Before You Buy!**

TABLE OF CONTENTS 1980 CATALOG

Page

- 3 Introduction
- 6 Beginners-
How to Buy
- 7 Beginners-
How To Get Started
- 8 1980 D-Tex
Metal Detectors
- 9 Detector Model
Master List
- 10 TK1 Detector
- 11 MK5, MK10 Detectors
- 12 CK20 Detector
- 13 CK30, CK40 Detectors
- 14 SK50, SK60 Detectors
- 15 SK70 Detector
- 16 RS100 Detector
- 17 RS200 Detector
- 18 How Deep Will
They Go?
- 19 VLF/TR Detector Tips
- 20 Accessories
- 21 Search Coils and
T.H. Results
- 22 Full Time
Treas. Hunt.
- 23 Warranty,
How to Order
- 24 Regional Headquarters
Program

RESULTS OF

CONFIDENTIAL PROJECT UNVEILED!



FRANK BALL, President
D-Tex Electronics

1 D-TEX
For
The 1980'S
IS
TOTALLY NEW



DORIAN COOK, President
D-Tex Treasure Industries

Here is what has been done and what we have to offer you.

1.) ALL NEW DETECTORS: Professional treasure hunters Frank Ball and Dorian Cook, working with other industry professionals and a highly skilled team of electronic engineers, have totally redesigned the entire line of D-Tex Metal Detectors. All 10 Models for 1980 are totally new from search coil to circuit board. These detectors, while designed for professional treasure hunters, have modified control features to allow even beginners and amateurs access to the very latest technology on a level they can understand. The units are not cheap but are priced competitively and fairly. We do not have to sacrifice quality for profit. We believe them to be superior to other brands in performance.

2.) GREATLY IMPROVED WARRANTY: D-Tex Electronics, during its 25 year history, has maintained a lifetime warranty against defects in its equipment to the original purchaser. Now we can do even more. The new 1980 D-Tex Metal Detectors warranty also permits a transfer of the warranty to a second purchaser if you sell the unit during your first two years of ownership (See page 23 for complete details). This keeps a higher resale value on your detector and allows you to update with new equipment as metal detector technology advances. In addition, should any 1980 D-Tex unit fail to operate properly due to defect in materials or workmanship within 30 days after its original purchase **we won't repair it — WE WILL REPLACE IT WITH A NEW ONE!** If there is a stronger warranty and commitment to quality and customer satisfaction in the detector industry, we have not yet seen it.

**IMPORTANT INFORMATION
FOR ALL BEGINNERS,
AMATEURS, PROFESSIONALS**

**TREASURE, COIN, RELIC AND NUGGET
HUNTERS**



Dorian Cook holds a "Yankee" Artillery Shell found while conducting an on-site training class for several beginners at an old Civil War battlefield in Southern Louisiana. Relic hunting student Doug Waters of Dallas, Texas looks on.

3.) NEW CUSTOMER ASSISTANCE PROGRAMS:

We have tackled this age-old problem with an exciting new two-fold system. The manufacturing, research & development and repair operations will proceed under the able supervision of D-Tex Electronics President, Mr. Frank Ball. A new corporation, D-Tex Treasure Industries, under the direction of its President, professional treasure and relic hunter Dorian Cook, will be responsible for Field Testing new detector designs, Marketing, Advertising, Public Relations, and Customer education for all D-Tex Electronics metal detectors. D.T.I. will also conduct professional treasure search and recovery operations and endeavor to provide consulting as well as "on site" assistance to amateur treasure hunters with legitimate treasure projects. D-Tex Treasure Industries is establishing REGIONAL HEADQUARTERS at centralized locations across the United States to give the beginning amateur and professional treasure hunters access to assistance when needed. Regional Treasure Hunting Training Seminars will be held by D.T.I. on a regular basis and field representatives will demonstrate equipment and methods at Treasure Club meetings and competition treasure hunts. A regular public speaking schedule is also planned (Write or call for more details on any of these items).

WHENEVER YOU NEED ASSISTANCE



4.) NEW "REGIONAL HQ" DEALER PROGRAM

We know how important it is for you to have access to a good local dealer. The D-Tex program centers around a unique Regional Headquarters system based on the "wagon wheel principle." The Director of each Regional H.Q. is a highly skilled professional quality treasure hunter and businessman who will establish authorized D-Tex dealers exhibiting a high level of metal detector competence. The Regional H.Q. serves as the "hub" of the wagon wheel with local dealers under his direction forming the "spokes" in outlying areas. We strongly believe that metal detectors should be sold only by people who use metal detectors and that only the best of these people should represent D-Tex! We require that our Regional Headquarters carry other major brands of detectors so you may more easily test and compare D-Tex units before buying. In addition, many of our Regional Directors will conduct local classes for their customers in all phases of coin, treasure, relic, and nugget hunting. Our goal is to provide you, the treasure hunter, with a complete central headquarters for **all** your treasure equipment and information needs. To contact the D-Tex Regional H.Q. or authorized dealer in your area, see the back cover of this catalog.

This sign is your promise of treasure hunting assistance



**REGIONAL
HEADQUARTERS**

**TREASURE HUNTING
INFORMATION, ASSISTANCE and SUPPLIES**

HOW TO BUY

The Right Metal Detector For You

By Dorian Cook

Author's Note: *I have personally helped over 500 people buy their first metal detector and indirectly helped thousands of others in this important decision. I know only a very few of these beginners who have not continued on to enjoy real success in some form of treasure, coin, or relic hunting. My own personal collection of relics and coins numbers in the tens of thousands. I have several thousand hours of experience in the use of all types of metal detectors and helped design the units introduced to you in this catalog. It is my sincere desire that the information I share with you will be of value in whatever detector choice you make.*

1.) Decide what types of treasure hunting you want to do most in order of importance. This will become most important in determining which detector you buy. For example, my own detector uses are as follows (A) Civil War Relic Hunting 50% of the time; (B) Treasure (large cache such as gold bullion, etc.) hunting 20% of the time; (C) Coin hunting 25% of the time, and (D) Nugget hunting 5% of the time.

2.) Decide where you might use your metal detector and what areas of the country you might be traveling to in your hunting. The detector you pick for just hunting the local parks might not be the one for hunting gold nuggets in Colorado or Spanish coins on the beach in Florida. Where you live and where you will travel play an important part in how much metal detector you need to buy.

3.) Consider your health in making a detector choice. Good detectors can weigh from three to eight pounds with the most common weighing between four and six pounds. A person with chronic arthritis or other painful disorders in his arms might find it too much to swing a metal detector for very long. Special arrangements, such as a belt mounted unit, might be

necessary to relieve some of the weight from the arm.

4.) Think about how much time you plan to allot to metal detecting each week. A person who can spend fifteen or twenty minutes per week with his detector would probably find an expensive professional quality metal detector an unwise investment. It honestly takes anywhere from 25 to 50 hours of use on a top-of-the-line metal detector to begin to fully learn its capabilities and how to best use it. Rule of thumb: if you plan to use your detector less than 2 hours per week, keep your purchase price under \$260.

5.) What is your "track record"? Persons who find themselves short on patience or tending to give up and quit when finding out that a project they are involved in requires learning a skill, would not likely benefit from buying an expensive metal detector. Being successful in both amateur and professional treasure hunting requires learning the skill of how to use a good metal detector properly. A top quality detector should have a top quality operator. Are you willing to learn?

6.) Consider your detector purchase as an investment: You may start out metal detecting with just the idea of spending some enjoyable leisure time outdoors. I think you should expect your detector to at least return its cost to you in terms of valuable items found such as coins or rings whether or not you ever hit a "pot of gold." It is common to pay for a \$300 to \$400, top-of-the-line metal detector in just two or three months, if you put a little effort into learning the full operating potential of the unit. If you want the best results possible and are willing to learn, don't worry about cost. Get the unit that will do what you want and it will pay its way!

7.) As a beginner, it's not necessarily wise to buy cheap. If you don't buy "enough" detector to start with and become disappointed

with its performance, you may put it in the closet and take up fishing instead, or you have to sell a cheap used detector which no one wants to buy. You will probably find, with few exceptions, that a metal detector costing under \$200 has severe limitations on both performance and resale value, no matter who makes it.

8.) Beginners should buy from a factory authorized dealer who is experienced in metal detecting. As a beginner, you will need several hours of his time during the initial sale and following few weeks. Don't buy from a dealer who seems unsure of the detector's operation or doesn't want to spend time with you.

When you go to visit your local dealer, discuss the previous points outlined in this article and you will enable him to help you choose the right detector. I feel beginners should avoid buying through mail-order dealers, no matter how good the discount price seems! You need that personal contact with your local dealer to get started and it will save you money in the long run.

9.) Most Important—Test and Compare before you Buy! Stated simply, ask your local dealer for assistance in testing and comparing similarly priced, advertised detectors of different brand names. Don't believe performance claims on any detector just because they are printed in black and white. All of us metal detector companies like to think we make the best detectors. **YOU BE THE JUDGE!**

10.) Read carefully through the pages on individual detector models in this catalog. We will tell you clearly what they are designed for, in order of best performance, and give you necessary details on the features they offer. I hope you will find this information of value in making that first detector purchase and that our metal detectors and our organization may be favored by your selection of a D-Tex.

In Metal Detecting

By Dorian Cook

Once you have made that most exciting purchase of your first metal detector—what's the best and fastest way to "learn the ropes" of treasure hunting? Let the voice of experience speak to you, having himself chased many "feathers of the wild goose" in his early years with that first metal detector.

1.) Learn where not to hunt as a beginner. It's easy to get in over your head and start treasure hunting on a level you're not ready for and thus not be successful. While you're learning, avoid ghost towns, old torn down and burned house, building sites and old farm houses with large amounts of metal trash lying around in plain sight. These places are paved with junk metal that totally frustrates most beginners and effectively conceals the coins and treasures they contain from the beginning treasure hunter's efforts. These sites require the best metal detectors in the hands of highly experienced operators (plus a great deal of patience) to produce their treasures. I recommend you first acquire a minimum of 50 to 100 hours of detecting experience on places like your yard, the local park, football fields, and old house places still fully standing without all the junk metal to put up with. Even at these places, a good discriminating detector is necessary to produce good results.

2.) Don't invest a lot of time and money on serious treasure or cache hunts as a beginner. While "grandpa Joe's" story about a "muletrain of Spanish gold bars buried 3 miles west of the old river crossing" may light the fires of "instant wealth" in your eyes it is probably a guarantee of "instant poverty" in your pocket.

I have hunted treasure professionally (and still do) and have associated with a lot of successful professional treasure hunters. Would it surprise you to learn that the most successful of these men average only

one treasure find every one and one-half to two years? It's true! While a few get lucky with an unexpected find now and then, most beginners only lighten their bank accounts by trying serious treasure hunting. If you want to be a successful treasure hunter, you can be. You must first develop your detector skills, research capabilities and the patience of Job. While you're working on becoming an expert detector operator, read the treasure hunting books by some of the experts. But remember—if it was as easy to find as the book seems to imply, it has already been found! Whenever possible, team up with an experienced hunter before you venture out after "the big one."

3.) There's no such thing as a hunted-out area! As a beginner, you will quickly find that all the local parks have been hunted, probably hundreds of times, by other treasure hunters. When you first start hunting, you may find only a few coins and it will seem like all the good coins have been found. Not so! Only the easy, close-to-surface coins are gone. The deeper, older, rare coins are still waiting out there by the thousands! This is where a top-of-the-line metal detector, in the hands of a skilled operator can pay for itself quickly. Resist the urge to wander around hurriedly covering the ground. Focus in on an area, **work very slowly** with your detector; return to the area several times as your hours of experience increase. Each time you will be amazed at the coins you have missed. Remember that a very deep coin doesn't yell at you—it whispers! **WORK SLOWLY!** In my own Civil War Relic Hunting, I have found thousands of dollars in rare historical artifacts from sites that other people had worked many times before.

4.) Learn your VLF capabilities. When you get a good amount of detecting hours under your belt, consider branching out into relic

hunting. Relic hunters hunt almost exclusively in the VLF mode on their detectors. Coin hunters, by comparison tend to hunt only in TR Discrimination mode and thus never really learn VLF operation and what it can do. There is a tremendous amount that could be written, but space does not permit. Ask your experienced detector dealer for more information on the VLF mode of hunting.

5.) Where possible, join a local Treasure Hunting Club. Here you will usually find an experienced "hunting buddy" who can "show you the ropes." Take a tip from someone who spent two years fulfilling the old Chinese proverb "He who teaches himself has a fool for a master!" Seek out the "voice of experience" and learn from it!

6.) No it doesn't necessarily mean you have a bad detector. After you hook up with a buddy and you start hunting together, he may be finding two or three times as many coins as you with a detector that costs half as much as yours. Why? the answer is simple—he knows his detector better, having had hundreds of hours of experience on it. When you achieve a similar level of detector operating skill with your more expensive unit, you will find that you are locating more and deeper coins and he is the one wanting to buy a new detector like yours. Remember—a high-performance detector needs a highly skilled operator to achieve maximum results! In almost every case where a good detector was purchased and the operator is unhappy with the unit, it is an **OPERATOR** not a detector problem.

In learning to be a successful metal detector operator, remember the old principle that you have to learn to walk before you can run.



INTRODUCING . . .

1980 METAL DETECTORS



LET'S TELL IT LIKE IT IS . . .

D-Tex Electronics has been building metal detectors for over twenty-five years. During that period, we have pioneered many innovations and improvements in metal detector technology. Success is noted and copied; however, we have watched the number of other companies building metal detectors increase over eight times since our first detector came off the line. This competition has served to prove the value of the American free enterprise system by encouraging rapid advancement of metal detector technology available to the consumer.

In order to occupy a position of leadership in the metal detector industry for the 1980's we felt it necessary to do a complete overhaul of the D-Tex Electronics equipment and programs. No company can continue in a top position, relying on past accomplishments; continual and innovative progress must be made. Our new efforts are comprehensive and complete. We kept none of our previous detectors or their circuitry for this new program—All 1980 D-Tex detectors are totally redesigned and dramatically improved over any D-Tex units ever built! We believe they reflect the highest levels of technology in the industry.

You as the consumer, however, will be the ultimate judge of the success of our efforts.

Please give us one consideration as you study the information describing our new detectors. Anyone can (and just about every other metal detector company does) say in their literature that they make the best metal detectors. We remind you that "talk is cheap." Remember when you compare our literature to others we don't join the pack by writing incredible and often unprovable performance claims. We designed our new detectors for people who make their living treasure hunting. We have modified the controls to put their operational capabilities also within reach of the serious beginners and amateur treasure hunters. The information given on the new units is clearly and accurately stated and will help you understand which detectors are designed for what types of treasure hunting. We strongly encourage you, after reading this information, to contact a D-Tex Authorized Dealer or Regional Headquarters personnel for a complete demonstration of the unit(s) in which you are interested. Make your purchase of a new metal detector a good experience—Test and Compare before buying.

A summary of the new D-Tex detectors and prices is provided here for your benefit. Consult the individual detector section in the D-Tex catalog for more details on the specific models shown.

LIFETIME WARRANTY

Your
Guarantee of Quality from D-Tex

MASTER LIST

ALL 1980 D-TEX DETECTORS ARE DISCRIMINATORS

For Complete Details, see pages:

For Accessories See Pages 20, 21

10, 11, 12, 13, 14, 15, 16, 17

Model No.	Description	Model No.	Description
TK1—Treasure King TR		SK50 Search King 5KHz VLF/TR	
Serious Beginners	<p>Push Button Retuning—Full Range Discrimination Adjust—Adjustable Sensitivity—Precision Pinpointing System—Heavy Duty Waterproof 8" Search Coil—Easy Access, longlife 9 volt Battery System (will accept rechargeable batteries)</p> <p>Recommended Use: Coin hunting in neutral or light to medium iron mineralized soil with excellent results.</p> <p>TK1A—Same as TK1 except comes with extra 10" waterproof search coil for relic and treasure cache hunting uses.</p>	Part-time & Full-time Professionals	<p>Flip Switch instant mode change and returning—Full range discrimination adjust—Adjustable sensitivity—Wide range high and low pitch tone control—Precision Pinpointing System—Heavy Duty Waterproof Search Coil—VLF Ground Control Circuit with 10 turn control—Panel Mounted 2 speed automatic tuning and Manual Retuning (3 position) toggle switch</p> <p>Recommended Use: Very Deep Relic, Small cache, and Coin Hunting in almost all types of iron mineralized & non-mineralized soil conditions with the VLF circuit and Excellent TR Discrimination in all but heavy mineralization conditions.</p> <p><i>Note:</i> In heavy mineralized soil conditions the unit is operated in VLF and the signals are then checked in TR Discriminate with the handle-mounted flip-switch. Also excellent for nugget hunting in VLF mode.</p>
MK5—Money King 15KHz VLF/TR		SK60	Same as SK50 except unit comes with extra 10" Heavy Duty Waterproof coil for additional VLF depth on deep relics, treasure caches (and even coins).
Serious Beginners, Amateurs	<p>Push Button Retuning—Full Range Discrimination Adjust—Adjustable</p> <p>Sensitivity—Wide-range high & low pitch tone control—Precision</p> <p>Pinpointing System—Heavy Duty Waterproof 8" Search Coil—Easy Access long-life 9 volt battery system—VLF Ground Control circuit and 10-turn control—Panel mounted VLF to TR Toggle Switch</p> <p>Recommended Use: Coin, Nugget, and Relic Hunting in nearly all types of iron mineralized and non-mineralized soil with excellent results.</p>	SK70	Same as SK50 except unit comes with extra "Deep Search" 14" Heavy Duty Waterproof Search Coil for <i>extreme VLF depth</i> on Treasure Caches, deep relics and large gold nuggets. This is the top-of-the-line D-Tex Unit.
MK10	Same as MK5 Except comes with extra 10" water proof search coil for deeper relic and treasure cache hunting	RS100 Relic Search 15KHz VLF/TR	
CK20 Coin King 15KHz VLF/TR		Military Artifact Hunters	<p>Same features as the CK40 except: Painted in camouflage colors—Designed for extremely rugged hunting—Comes with 8", 10", and 14" Search coils for all relic hunting applications. All RS Search coils are built for extra heavy-duty use</p> <p>Recommended Use: Hot on brass and other non-ferrous metal objects such as lead, silver, gold. Has both mineralized and non-mineralized soil applications with the VLF Ground Control Circuit and the super sensitive TR Discriminate Circuit. Using proper techniques it will easily discriminate target signals in even badly mineralized ground.</p>
Serious Amateurs	<p>Flip Switch Instant Mode Change and Returning— Full-Range Discrimination Adjust—Adjustable Sensitivity—Wide Range high and low pitch tone control - Precision Pinpointing System — Heavy Duty Waterproof 8" search coil — VLF Ground Control Circuit with 10 turn Control—Panel-mounted 2 speed automatic tuning and manual retuning (3 position) toggle switch</p> <p>Recommended Use: Coin, Relic, & Cache Hunting in almost all types of mineralized or neutral soil conditions with excellent results in VLF Mode and Outstanding Coin depth in most applications in TR Discrimination Mode.</p>	RS200 Relic Search 200 5KHz VLF/TR	<p>Same features as RS100 except has 40% more depth in the VLF mode for relic hunters seeking such deeply buried items as cannon balls and belt buckles. TR Discrimination depth is similar to the RS100.</p> <p>Recommended Use: Large coils (10" and 14") are ideal for "battlefield" hunting and searching for buried caches of weapons, etc. For heavily trashed areas like old campsites, switch to the smaller 8" search coil.</p> <p>IMPORTANT—Features on ALL VLF/TR MODELS ALLOW TR Discrimination even in mineralized soil.</p>
CK30	Same as CK20 except unit comes with extra 10" Heavy duty Waterproof Search Coil for deep relics and small treasure caches.		
CK40	Same as CK20 except unit comes with extra 14" Deep Search Super-discriminating search coil for maximum depth on treasure caches, deep relics and even small items like coins & rings.		

Designed For:

SERIOUS BEGINNERS

TREASURE KING



- USE FOR:
1. Coins & Rings
 2. Treasure Caches
 3. Relics

Discriminator TR • 15KHz

IMPORTANT

Low Frequency TR Discrimination Allows Maximum depth on Coins while rejecting trash metal in all but heavily mineralized soil

Precision "x" Pinpointing

Features:

- Push-Button Retuning—Handle Mounted
- Power High-low Sensitivity Control
- Tuning/Volume Control
- Dual-Circuit Battery Check
- Full-Range Discrimination Control
(Rejects Nails, Bottle Caps, Pull-tabs and even Aluminum Screw Caps)
- Easy Access Battery System
(Comes complete with 4 long-life 9 volt batteries and will accept rechargables)
- Heavy-Duty 8" Waterproof Search Coil
- Adjustable Dual-Stem-Locking System
(Prevents annoying "Stem-Slop")
- Large Discriminating Meter
(Has "Dayglo" needle and battery condition readout)
- Stereo Headphone Jack
CAUTION: Delivers Extra Powerful Volume Use with adjustable volume earphones only!
- Discriminate/Non-Discriminate Selector Switch

Instant Push-button Retuning

\$225.00 COMPLETE



FACTS

- WARRANTY — Lifetime
 - FREQUENCY — 15KHz
 - WEIGHT — 3 lbs. 8 ozs. with 8" Coil
 - BALANCE — Exceptional!
 - SENSITIVITY — Outstanding
- Compare to any other TR Discriminator

CAUTION

Avoid Ear Discomfort
Earphone Jacks are Extra Powerful to pull in deep and weak signals. Use adjustable volume headphones and set volume to your own hearing comfort.



\$265.00 COMPLETE



Same as TK1, except comes with both 8" and 10" Search coils for greater depth and versatility.
Weight with 10" Coil— 3 lbs. 12 ozs.

MONEY KING

Designed for

SERIOUS BEGINNERS, AMATEURS



- USE FOR: 1. Coins
2. Relics
3. Treasure Caches
4. Nuggets

Discriminator
VLF/TR • 15KHz

Precision "x"
Pinpointing



Features:

- VLF/TR Discrimination
Circuitry & Selector Switch
- Push-Button Retuning - Handle Mounted
- Power High-Low Sensitivity Control
- Tuning/Volume Control
- Full-Range Discrimination Control
(Rejects Nails, Bottle caps, Pull-tabs and even Aluminum screwcaps)
- Wide-Range VLF Ground Control (10-Turn)
(allows good penetration and easy operation over mineralized ground).
- Wide-Range High and Low Pitch TONE CONTROL
(Set the detector sound tone to your own hearing preference)
Perfect for those with some hearing loss.
- Dual Circuit Battery Check
- Easy Access Battery System
(Comes complete with 4 long-life 9 volt batteries and will accept rechargeables)
- Heavy Duty 8" Waterproof Search Coil
- Adjustable Dual Stem Locking System
(Prevents Annoying "Stem-Slop")
- Large Discriminating Meter
(with "Dayglo" needle and battery condition Readout)
- Stereo headphone Jack — CAUTION: Extrapowerful - use with adjustable volume earphones only!

IMPORTANT

Wide-range VLF Ground Control Allows Good Depth Penetration on even Heavily Mineralized Soil. In Most other types of ground the TR Discrimination is capable of locating single coins at up to 12".

Instant Push-button Retuning



\$260.⁰⁰ COMPLETE



FACTS:

- WARRANTY — Lifetime
- FREQUENCY — 15KHz
- WEIGHT - 3 lbs. 10 oz. with 8" Coil
- BALANCE — Exceptional!
- SENSITIVITY — VLF: Very good—all soils:
TR DIDSCRIMINATE: Outstanding-Neutral to Medium minerals
- DURABILITY — Heavy-duty (but light weight)
CONSTRUCTION—No Loose-fitting stems or other parts to rattle



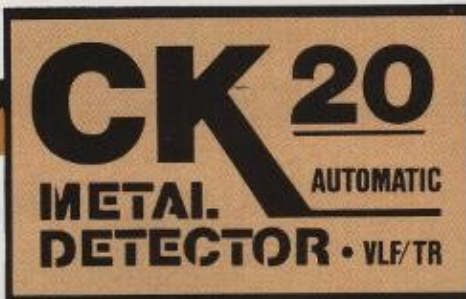
\$300.⁰⁰ COMPLETE

Same as MK5, except comes with both 8" and 10" Heavy-duty, Water-Proof Search Coils for greater versatility and deeper detection of relics, caches and coins under almost all conditions. Weight 3 lbs. 14 ozs. with 10" Coil

Designed for:

SERIOUS AMATEURS

COIN KING



- USE FOR:
1. Coins & Rings
 2. Relics
 3. Small Caches
 4. Nuggets

Discriminator
VLF/TR • 15KHz



**OUR BEST
COIN DETECTOR**

IMPORTANT

This Detector has the Capability to Discriminate Target Signals in Mineralized Soil Without "WHIPPING"!

FEATURES

- *D-TEX's R.A.M. Switch (Retuning and Mode) Allow Split Second VLF to TR discriminate Mode Change as well as Instant Retuning and "X" Pinpointing.
- D-Tex's unique 2 Speed automatic/manual tuning option allows much greater versatility in Discriminating all types of soil. Outstanding for Wet Salt Beach hunting.
- Power High-low Sensitivity Control
- Tuning/Volume Control
- Full-Range Discrimination Control (Rejects Nails, Bottle caps, Pull-tabs and even Aluminum Screwcaps)
- Wide-Range VLF Ground Control (10-Turn) (Allows good penetration and easy operation over mineralized ground).
- Wide-Range TONE CONTROL (Set the detector sound tone to your own hearing preference)
- Dual Circuit Battery Check
- Easy Access Battery System (comes complete with 4 long-life 9 volt batteries and will accept rechargeables)
- Heavy Duty 8" Waterproof Search Coil
- Adjustable Dual-Stem Locking System (Prevents annoying "Stem-Slop")
- Large Discriminating Meter (With "Dayglo" needle and battery condition readout)
- Stereo Headphone Jack
CAUTION: Extra Powerful—use with adjustable volume earphones only!

*R.A.M. Switch

\$320.⁰⁰ COMPLETE

FACTS:

- WARRANTY—Lifetime
- FREQUENCY—15KHz
- WEIGHT—3 lbs. 10 ozs. with 8" Search coil
- BALANCE—Exceptional!
- SENSITIVITY —VLF: Very Good—*all* types of mineralized soil.
TR Discriminate: Outstanding—neutral to medium mineralized soil.
- DURABILITY—Heavy-duty (but light-weight)
- CONSTRUCTION—No loose-fitting stems or other parts to rattle.

Designed for:

SERIOUS AMATEURS and PROFESSIONALS

COIN KING

CK 30
AUTOMATIC
METAL DETECTOR • VLF/TR

- USE FOR:
1. Coins & Rings
 2. Deeper Relics
 3. Large and Deep Treasure Caches

Discriminator
VLF/TR • 15KHz



IMPORTANT

These Detectors have the Capability to Discriminate Target Signals in Mineralized Soil Without "WHIPPING"!

*R.A.M. SWITCH

Features

Same as CK20
But includes both
8" and 10" Searchcoils
for greater versatility and
more depth in all applications
weight: 4 lbs. with 10" coil

\$360.00 COMPLETE

*** These detectors will locate even tiny metal objects such as a one-dollar U.S. gold piece with the larger 10" and 14" search coils just as easily as the smaller 8" search coil does. Unlike the TR and BFO Detectors of years gone by you do not lose the smaller metal signals near the surface with the larger search coils. In most cases you will also experience greater depth detection on small objects as well as large objects by using these larger search coils on your detector.

CAUTION

Avoid Ear Discomfort
Earphone Jacks
are Extra Powerful to pull
in deep and weak signals.
Use adjustable volume head-
phones and set volume to your
own hearing comfort.

CK 40
AUTOMATIC
METAL DETECTOR • VLF/TR

\$390.00
COMPLETE



Same as CK20
but includes both
8" and 14" Searchcoils
for Maximum depth and versatility in
all applications. Weight: 4 lbs. 2 ozs. with 10" coil

Designed for:

PART-TIME and FULL-TIME PROFESSIONALS

SEARCH KING



- USE FOR:
1. Caches & Relics
 2. Nugget Hunting
 3. Coins
- Pipe Locating

Discriminator
VLF/TR • 5KHz

Excels for VLF
Operation in areas
of heavy soil
mineralization

IMPORTANT

This Detector has the capability to discriminate target signals in mineralized soil without "Whipping"



Features:

- *D-TEX's R.A.M. Switch (Retuning and Mode) Allow Split-second VLF to TR Discriminate Mode Change As well as Instant Retuning and "X" Pinpointing.
 - D-Tex's unique 2 speed Automatic/Manual Tuning option allows much greater versatility in discriminating in all types of soil.
 - VLF/TR Discrimination circuitry & selector switch
 - Push-Button Retuning - Handle mounted
 - Power High-Low Sensitive Control
 - Tuning/Volume Control
 - Full-Range Discrimination Control (Rejects Nails, Bottle Caps, Pull-tabs and even aluminum screw caps)
 - Wide-Range VLF Ground Control (10-Turn) (allows good penetration and easy operation over mineralized ground).
 - Wide-Range High and Low Pitch TONE CONTROL (Set the detector sound to your own hearing preference)
 - Dual Circuit Battery Check
 - Easy Access Battery System (Comes complete with 6 long-life 9-volt batteries and will accept rechargeables)
 - Heavy Duty 8" Waterproof Search coil
 - Adjustable Dual-Stem Locking System (Prevents annoying "Stem-Slop")
 - Large Discriminating Meter (with "Dayglo" needle and battery condition Readout)
 - Stereo Headphone Jack
- CAUTION: Extra powerful—Use with adjustable volume earphones only!*

* R.A.M. Switch

\$330.⁰⁰ COMPLETE

CAUTION

Avoid Ear Discomfort
Earphone Jacks
are Extra Powerful to pull
in deep and weak signals.
Use adjustable volume head-
phones and set volume to your
own hearing comfort.

Designed for

FULL-TIME PROFESSIONALS

SEARCH KING



Discriminator VLF/TR • 5KHz

- USE FOR:**
- MAXIMUM DEPTH**
1. Treasure Caches
 2. Deep Relics
 3. Large Area Coverage
 4. Deep Pipe Locating
(Recommend Large 10" & 14" Searchcoils for this application)

IMPORTANT

This Detector has the Capability to Discriminate Target Signals in Mineralized soil without "Whipping"

OUR DEEPEST DETECTING VLF "Top-of-the-line"

* R.A.M. Switch

Features:

Same as SK50
Except includes Both
8" and Ultra deep-detecting
14" Searchcoils

FACTS:

- WARRANTY—Lifetime
- FREQUENCY—5KHz
- WEIGHT—with 8" Coil 3 lbs. 12 oz., with 10" Coil—4 lbs., with 14" Coil—4 lbs., 6 oz.
- BALANCE—Exceptional!
- TR DISCRIMINATE: Will achieve excellent results when properly tuned and operated in all but heavily mineralized ground.
- SENSITIVITY—VLF: Exceptionally deep detection of Metal Objects in VLF Mode even in heavily mineralized soil
- DURABILITY—Heavy Duty (but relatively lightweight) Construction—no loose fitting stems or other parts to cause annoying rattles.

\$410.⁰⁰ COMPLETE



\$380.⁰⁰

COMPLETE

Same specifications as the SK50 Detector, except comes with both 8" and 10" Heavy-duty, Water-Proof Search coils for greater versatility and deeper detection of relics, caches and coins under almost all conditions. Weight: 4 lbs. with 10" Coil.

Designed for:

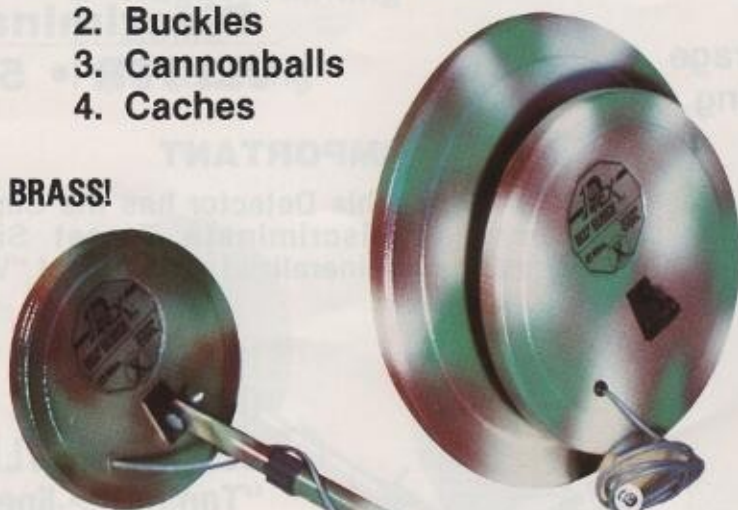
MILITARY ARTIFACT HUNTERS

RELIC SEARCH



- USE FOR:**
1. Buttons, Bullets & Coins
 2. Buckles
 3. Cannonballs
 4. Caches

HOT on BRASS!



**Discriminator
VLF/TR • 15KHz**

IMPORTANT

This Detector has the capability to Discriminate Target Signals In Mineralized Soil Without "Whipping"

SPECIAL
CAMOUFLAGE
PAINT FINISH

Use for Trashy
"Campsite" Hunting.

Features:

- *D-TEX's R.A.M. Switch (Retuning and Mode) Allow Split Second vlf to TR Discriminate Mode Change As well as Instant Retuning and "X" Pinpointing.
- D-Tex's unique 2 Speed Automatic/Manual Tuning Option allows much greater versatility in discriminating in all types of soil.
- Power High-Low Sensitivity Control
- Tuning/Volume Control
- Full-Range Discrimination Control (Rejects Nails, Bottle caps, Pull-tabs and even aluminum screw caps)
- Wide-Range VLF Ground Control (10-Turn) (allows good penetration and easy operation over mineralized ground).
- Wide-Range High and Low Pitch TONE CONTROL (Set the detector sound tone to your own hearing preference)
- Dual Circuit Battery Check
- Easy Access Battery System (comes complete with 4 long-life 9 volt batteries and will accept rechargeables)
- Adjustable Dual-Stem Locking System (Prevents annoying "Stem-Slop")
- Large Discriminating Meter (with "Dayglo" needle and battery condition Readout) Stereo Headphone Jack Extra Powerful to Bring in weak Signals

* R.A.M. Switch

\$445.⁰⁰ COMPLETE



Equipped with
SPECIAL
High—Strength 8", 10", 14"
Search coils designed for
Relic Hunting Use

CAUTION

Avoid Ear Discomfort
RS100 and 200 Earphone Jacks
are Extra Powerful to pull
in deep and weak signals.
Use adjustable volume head-
phones and set volume to your
own hearing comfort

The BIG Question:

How DEEP Will It Go?

by Bob Grant

This is probably the most often asked and misunderstood question we hear from prospective customers when buying a metal detector.

The answer is seldom a simple one and requires that you first understand several factors that determine how deep a metal detector will go in any given circumstance.

Let's begin with:

1. How Big Is the Metal Object? Stated simply: the bigger the metal object the deeper it can be detected. Obviously, the metal detectors will go deeper on a piece of metal the size of an iron treasure strongbox than they will on a single coin.

2. What Kind of Metal Is the Object Made Of? Depending on the operation frequency of your metal detector, you will find certain metals can be read deeper than other metals because of their conductive properties (ability to reflect transmitted electronic signals).

3. How Long Has the Metal Object Been Buried?

Many metals begin to corrode or rust when they become buried in the ground. This corrosion process, as the years go by, begins to form a "halo" of metal oxides around the metal object that can be detected. This "halo effect" makes the object appear to the metal detector to be a bigger piece of metal than it actually is. As the years go by the buried object's "halo" grows bigger and bigger thus increasing the depth at which the object can be detected.

4. How Much Iron Mineralization Is Present in the Ground Where You Are Detecting?

Generally all soil has some degree of iron or salt-water mineralization in it. This condition can greatly

affect the depth at which you can detect metal objects. A good example would be most of the state of Florida compared to most of the state of Colorado. Florida has extremely low mineralization conditions in almost all of its territory (except its wet-salt-water beaches), while Colorado has extremely iron mineralized soil throughout almost the entire state. To give you an example of extremes: it is possible to obtain depths of up to 18" on a penny with a good metal detector in many parts of Florida while in some parts of Colorado the same detector could not detect that penny any deeper than four inches.

5. How Much Moisture Is in the Ground?

Very dry ground does not conduct detector signals like ground that has had a good soaking rain a few days previously and is full of moisture. Moist ground can add up to 40% more depth detection capability to your metal detector over dry soil.

All five of these factors can greatly affect how deep your detector will locate metal objects. As you can see it becomes very difficult to be completely accurate on "how deep will it go?" To assist you in understanding the depth potential of the 1980 D-Tex Metal Detectors we have prepared the following chart on our units. The figures quoted are basic guidelines established in our extensive field and bench testing programs. They are not infallible, however, and an occasional variation may be noticed. The low figures represent detection depth under the worst conditions while the higher figures represent detection depth under the best conditions. **Caution:** *The depth detection on a metal object may be considerably more in an "air test" performed in a dealer's shop than what you experience in the field.*

Metal Object In The Ground

MODEL	SEARCHCOIL SIZE	PENNY	QUARTER	SILVER DOLLAR	1/4" GOLD NUGGET	12 lb. CANNONBALL	2'x3' IRON STRONGBOX
TK1	8"	2"-14"	4"-18"	6"-24"	1"-7"	10"-30"	18"-40"
	10"	3"-18"	5"-22"	8"-28"	1 1/2"-8"	12"-36"	24"-46"
MK-5.10	8"	4"-14"	6"-20"	10"-24"	4"-8"	18"-30"	30"-48"
	10"	6"-18"	8"-24"	10"-28"	5"-9"	24"-36"	36"-60"
RS,100 & CK,20 30,40	8"	4"-14"	6"-20"	10"-24"	4"-8"	18"-30"	30"-48"
	10"	6"-18"	8"-24"	10"-28"	5"-9"	24"-36"	36"-60"
14"	8"-24"	10"-30"	12"-32"	6"-10"	28"-46"	40"-70"	
RS,200 & SK,50 60,70	8"	6"-16"	8"-18"	10"-28"	6"-10"	24"-38"	36"-60"
	10"	8"-20"	10"-26"	12"-36"	7"-11"	30"-48"	42"-72"
14"	10"-26"	12"-30"	14"-38"	8"-12"	36"-60"	50"-84"	

IMPORTANT FACTS

by Frank Ball

The Fantastic VLF/TR Metal Detector

The purpose of this information is to provoke your curiosity and ultimately make you a better VLF/TR metal detector operator.

Many owners of VLF/TR metal detectors remain unaware of their impressive potential for the successful location of valuable metal objects under difficult operating conditions.

The versatility of a good VLF/TR detector for almost any treasure hunting application is unsurpassed! Read the following operating tips and statements carefully and seek details on them from your D-Tex Treasure Industries Regional Headquarters or authorized dealer in your area (See back page of this catalog). Note: If you find it necessary to contact us at the D-Tex offices, please include your phone number and time of day when you are available for a return call. We would rather not respond to your inquiry by written correspondence because we feel it denies you the personal service and complete assistance afforded by personal phone contact—at our expense.

All of the following statements apply to the 1980 D-Tex VLF/TR Discriminator Metal Detectors and many of them also will apply to other companies' detectors presently on the market. It is our sincere desire that you get the best performance possible out of whatever brand of metal detector you may own or buy.

The following performance information applies to VLF/TR Detectors with a Handle-mounted Push-button or *R.A.M. Switch Control (*Retuning and Mode Flip-switch).

1. These detectors have the capability of discriminating target signals in "bad ground" (iron mineralized soil) without "whipping" or maintaining a constant sweeping motion with the detector.

2. These detectors have the capability to tune out salt-water interferences at beaches and locate coins and rings near maximum depths while discriminating.

3. These detectors have the capability to accurately pinpoint large and even the smallest coin size objects **before** you dig. This allows quick recovery of targets without excessive probing or digging. You can many times actually trace the shape of the object while it's still under the ground.

4. These detectors will locate even tiny metal objects such as a one-dollar U.S. gold piece with the larger 10" and 14" search coils just as easily as the smaller 8" search coil does. Unlike the TR and BFO Detectors of years gone by you do not lose the smaller metal signals near the surface with the larger search coils. In most cases you will also experience greater depth detection on small objects as well as large objects by using these larger search coils on your detector.

5. Our VLF/TR units are equipped with high-low pitch tone control that allows you to adjust the target sounds to your own personal hearing preference and requirements. Those operators who suffer from a partial low or high frequency hearing loss will find that this feature allows them to adjust the detector tone to achieve a maximum depth detection on faint target signals.

6. The D-Tex VLF/TR detectors have **increased earphone jack power** to allow much easier detection of faint and deep metal signals. Allows you to find the really old coins. *CAUTION: To avoid ear discomfort on loud signals, use only earphones with individual volume controls on each ear and set on lower volume.*

7. The VLF/TR's operated in the automatic tuning function (with the sensitivity control properly adjusted) allow better T.R. ground penetration (when discriminating) while eliminating almost all annoying "backreading" signals from junk items.

8. These detectors make excellent nugget hunting units when operated properly in the VLF mode.

9. The D-Tex VLF/TR's will detect metal objects up to 2 or 3 times deeper than the BFO detectors on the market at the time this was written.

10. Experienced operators on the VLF/TR detectors find that many times while operating in the VLF mode they can, through subtle differences, in the target signal, differentiate between such metals as iron, lead, brass, silver and gold before digging.

11. The D-Tex VLF/TR's will give 25 to 40 operating hours on a set of batteries and may be fitted with rechargeables if desired.

12. The D-Tex VLF/TR detectors using the handle mounted *R.A.M. Switch (*Retuning and mode) allow the operator one handed control of the detector after initially adjusting the controls. He may instantly switch from the VLF to the TR side of the detector while retuning his detector at the same time. To retune the unit at any time only a flick of the switch is necessary.

1980 METAL DETECTOR AND TREASURE HUNTING ACCESSORIES



Special Treasure Hunting Headphones — Designed especially for rugged use. Extra heavy-duty wires eliminate frequent breaking at the headphone jack. Lightweight for comfort; mono-stereo switch; adjustable volume control for each ear. Headphones allow better detection of weak signals on deep objects and eliminate annoying back ground noise.

Model SHP-3 Priced at: \$25.00



Detector Armrest Fits all 1980 D-Tex Metal Detectors and many others. For use when searching with larger 10" and 14" Searchcoils (also effective for persons with impaired strength in their arms).

Model UAR-2 Priced at: \$15.00



D-Tex Transfers for Jackets & T-Shirts High-quality iron on transfers for those desiring to show that they are part of the D-Tex Team. **\$3.00 each**

Available Late July 1980

Professional Accessory—Body Moun.

Alteration: New accessory available for all 1980 D-Tex Detectors allows you to detach control box from the stem and add a very functional extension handle that contains either push button or *R.A.M. Switch (*Retuning and Mode) control mounted in the stem. The control box may be either mounted on your belt by a belt-clip or slung from your shoulder by adjustable nylon straps. Double hand-grip systems permits excellent maneuvering of large coils even through underbrush and allows you to cover large areas quickly in your searching. This item should be special ordered with your new detector when possible. It is installed at the factory. If you desire to have this feature added to your existing 1980 D-Tex Detector, return the unit, prepaid shipping, to the factory. It will be returned C.O.D. for cost of the alteration and the return shipping charges. *Note: After alteration the detector may be used in either its original configuration or in the body mount version as the user requires.*

Model BMA5 - Remote Push-button Version for 1980 TK & MK Detectors only. **Priced at: \$55.00**

Model BMA6 - Remote R.A.M. Switch Version for CK, SK, and RS Detectors only. **Priced at: \$60.00**



Special Order Item — D-Tex Gold Dredges and related prospecting supplies manufactured by Treasure Emporium. Heavy and light duty dredges from 2½" to 6" are now in production or planned. For a complete list of models, specifications, and prices contact your Regional Headquarters or the D-Tex Factory. **Available July 1980**



D-Tex "Quik-Trap" Gold Pan manufactured for D-Tex Treasure Industries by Treasure Emporium.

Unlike other pans, this one is almost impossible to break or bend and the black color aids in making gold visible. It is slightly larger than most standard pans and contains the "Quik-Trap" gold catching riffle design to prevent loss of even tiny pieces of gold while panning. Try one—you'll like it (and the price is right!).

Model DGP12 Only \$5.00



Searchcoil "Skid Plates": Protects the bottom of your detector search coils from scratches and wear (also keeps the resale value of your unit higher).

Model SSP-8 Available July 1980 for all D-Tex 8" Search coils **\$5.00**

Model SSP-10 Available August 1980 for all D-Tex 10" Searchcoils **\$6.00**

Model SSP-14 Available August 1980 for all D-Tex 14" Searchcoils **\$8.00**



Detector Carrying Bag—Deluxe custom-designed protection for your new D-Tex Detector by Vinyl Bag Works. Will hold collapsed detector with 8", 10" and now 14" coils with disassembling detector. Special pocket for digging tools, carrying strap and hand loop. Heavy-duty construction.

Model VCB4 Priced at: \$28.00



Deluxe Coin Apron—Soft but heavy duty vinyl apron contains 2 pockets for both coins and any junk you might dig.

Model DCA-7 Priced at: \$6.50



Heavy-duty (but light weight) Collapsible Pack Shovel, by Ames, stands up under hard digging. This is not a cheap foreign-made "army surplus" type that breaks the first day you try to use it. A good companion digging tool for the RS100 & RS200 Metal Detectors. Features "Instant Angle Change" allowing momentary change from shovel to hoe to collapsed position for travel. Camouflage Colors on metal parts.

Model DPS13 Priced at: \$15.00
Available Mid-June 1980

SEARCH COILS

15KHz Fits TK, MK, CK and RS100 Models Only	5KHz Fits SK and RS200 Models Only
Standard	
#8CK15 8"	#8SK5 8"
	
\$60.00	\$65.00
#10CK15 10"	#10SK5 10"
	
\$75.00	\$85.00
#14CK15 14"	#14SK5 14"
	
\$105.00	\$120.00
Heavy-Duty	
#8RS15 8"	#8RS5 8"
	
\$65.00	\$70.00
#10RS15 10"	#10RS5 10"
	
\$80.00	\$90.00
#14RS15 14"	#14RS5 14"
	
\$110.00	\$125.00
Weighted 8" 10 ft. Cable Underwater	
#8UW15	#8U5
	
\$85.00	\$90.00

LEARN:

THE TREASURE HUNTING EQUATION!

The RIGHT DETECTOR + SKILLED OPERATOR X Patience and Practice =
RESULTS LIKE THESE!



A small sample of the many different and valuable rings lost and waiting for your metal detector signal to reveal their location.



A nice gold nugget in the hands of Jerry Goldstein and the cold rushing mountain stream behind him reflect the efforts of the "modern day 49'er." The new VLF/TR Metal Detectors are putting gold left behind by old-timers within reach of the amateur prospector today.



Dorian Cook displays a valuable \$5 US Goldpiece set in a gold jewelry frame. Literally thousands more of these rare and much sought after gold coins await location by a metal detector all over the United States.



Professional Treasure Hunter, author, filmmaker and D-Tex Field Representative Bob Grant displays a handful of old silver dollars and 50 cent pieces typical of the countless little caches left behind by the robbers, miners and settlers of our "Wild West" period of development.



Relic Hunters Cliff Williams and John Payne of Memphis, Tennessee "Dig" history as they display a valuable Civil War Belt Buckle and bayonet found while hunting a long forgotten "Yankee" campsite. There are over 6000 known Civil War Sites across the United States. Many are open to metal detecting



A tobacco tin peeps from a long-forgotten hiding place where it reveals its "egg money" contents of Indian head pennies and a few silver coins. The situation definitely justifies a pretty smile from accomplished treasure hunter Sandy Goldstein of Pacoima, California.



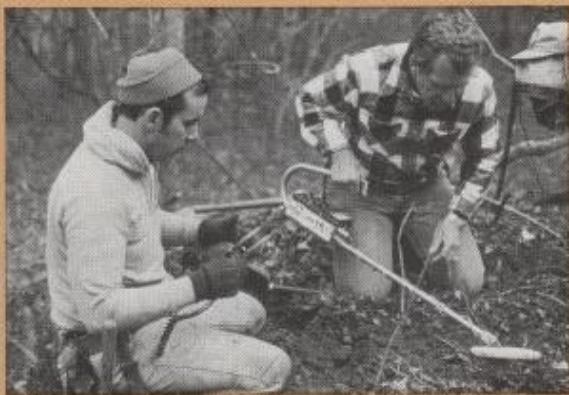
Nationally known treasure and bottle hunter Bob Wolf shows some rare and beautiful old bottles he has recovered. He locates covered up trash dumps containing bottles by detecting the large concentration of old junk metal that was thrown away with the bottles.



Here is one prototype of the new D-Tex Detectors and the results of its' first relic hunting field test: Dozens of 120 year old Civil War "Minnie Balls", or bullets, and an 1863 Indian head penny were found on a site that has been worked literally hundreds of times before.

"Put Yourself in the Picture"

We would like to put your "success story" here next year, so get busy with your new D-Tex Detector and let us hear from you!



FULL TIME TREASURE HUNTING

A REALISTIC APPRAISAL

By Dorian Cook

Dorian Cook and Stu Auerbach get down to business on a serious treasure search and recovery project.

Could you make a living Hunting Professionally?

There are probably very few people who don't at least once in their lives experience the fantasy of digging up buried treasure such as a pirate chest of gold, or one of Jesse James' stolen strongboxes. Among those who have actually engaged in a little bit of treasure hunting there is surely even a lower percentage who have not given thought of becoming a full-time treasure hunter. Some of these have walked away from their jobs, taken their life savings and attempted to follow this trail of high adventure with a golden gleam in their eyes. Too many times the "golden" gleam gives way to tears and empty pockets. Does this mean that professional treasure hunting is a guaranteed way of separating a fool from his money? *Not at all*, when conducted with the proper equipment, training, and experience.

Very briefly I want to give you a realistic overview of full-time treasure hunting. This will not be the exciting picture of untold riches waiting for the bold of heart you read about in the treasure stories. Nor is it intended to discourage you from pursuing this modern search for adventure. It is my sincere hope that the few points I cover briefly will **increase** your chances for success if you ever decide to take the giant step of becoming a full-time treasure hunter. My information comes from the many hours I have spent in pursuing treasure on a professional basis as well as my contacts with many of the top professional treasure hunters in this and other countries.

Did you know 1) the skilled professional treasure hunter makes a valuable recovery on the average of once every 1½ to 2 years. All the rest in between is empty holes and "wild goose feathers." 2) One of the most important qualities of the professional treasure hunter is **being discreet!** Only his very close friends know what he has found and where. I would estimate that 90% or more of all treasure recovered never becomes public knowledge. 3) Yes, it's true, there is more wealth buried in the ground than in circulation but if it was easy to find and recover, it wouldn't be there. 4) Unless a man can start hunting with enough capital to pay all his domestic bills, feed his family, and finance his treasure hunting expenses (and there are plenty) for two years, his chances of succeeding are limited. 5) To be repeatedly successful (and anyone can get luck and make a treasure find once in a while but repeating the performance regularly as the years go by requires **skill** not luck) a man must understand that professional treasure hunting is a highly trained profession and he must develop certain skills if he is to succeed.

Probably the four most important qualities that a successful pro treasure hunter develops are: A) He trains his mind to function like a detective. Treasure stories are a dime a dozen and only 4 or 5 out of a hundred will actually be valid

and feasible enough to merit time spent working on them. By becoming an expert at separating fact from exaggerated legend and rumors the professional greatly reduces the time he spends on "wild goose chases." B) He knows the value of good equipment and buys only the best. Price is no object as long as he gets performance. His metal detectors, vehicle, etc. are the tools of his trade (and it is a trade!). C) He completely masters the operation of his equipment before spending time and money trying to work a major treasure project with it. No matter how good a metal detector or other treasure hunting aid is, there **must be** an expert operator on the other end of it! It takes several hundred hours on a particularly good metal detector of any type or brand to become truly expert in its operation. (This does not mean, however, that the same detector in the hands of a beginner or amateur cannot be mastered—I refer here only to that razor edge of skill a man needs on his detector if he's going to try to make his living with it.) D) Perhaps the most important of the qualities embodied in a professional treasure hunter are perseverance and patience. Once he has proved a treasure story is legitimate he will stay on it like a bulldog knowing that it may take several years to succeed in locating it. He generally works several good treasure leads at one time so that when he reaches a **temporary** dead-end on clues for one project he simply shifts his efforts to another for awhile. He will later return to his original project and try again. His confidence in his research and detecting abilities will not be shaken. He knows that in time success will be his. These then are the basic ingredients that go into the making of a successful full-time treasure hunter. Remember that this article is not meant to be taken as an in-depth expose' but merely attempts to point you in the right direction.

I'd like to leave the subject with this closing thought: 85% of all people who attempt to become professional treasure hunters never persevere long enough to really enjoy continual success. Of the 15% who do, 95% + embody all the aforementioned qualities and almost all of these do well over a long period of time.

Want to be a successful full-time treasure hunter? Get the "golden gleam" out of your eye and replace it with the realistic, calculating viewpoint and skills of the professional!

National Treasure Hunting TRAINING SEMINARS

Learn more about your detector
from
PROFESSIONALS



Special classes and seminars on all phases of treasure, coin and relic hunting will be conducted throughout the year at various locations around the United States by D-Tex Treasure Industries and special guest instructors. These speakers will concentrate on sharing their detecting secrets that will make you more successful. Some classes will be limited as to number of participants and tuition fees ranging from \$25.00 to \$35.00 may be charged. If you are interested in participating, please contact us for schedules and other details.

MORE PROTECTION FOR YOU LIFETIME WARRANTY

Your Guarantee of Quality from D-Tex

IMPROVED
Now Transferable
for 2 years
after purchase

D-Tex Electronics Inc. warrants each D-Tex Metal Detector against defects in materials and workmanship for the life of the original purchaser or any one to whom the ownership is transferred during a two year period following the date of purchase (after two years the original purchaser lifetime warranty remains in effect but cannot be transferred to a second person).

Should any D-Tex Detector fail to perform free of defects in material or workmanship, D-Tex Electronics, upon notification in writing to its factory address at 614 Easy St., Garland, Texas 75042, will, at its option, repair or replace the defective unit without charge, excluding transportation charges to and from the factory and a ten dollar packing and handling fee. Naturally the warranty does not cover any detector that has been abused, tampered with or repaired by an unauthorized party.

D-Tex further warrants that any D-Tex Detector that proves defective within the first thirty days after purchase will be replaced FREE OF CHARGE with a new identical unit by either the D-Tex factory or any D-Tex Treasure industries Regional Headquarters.

This warranty gives you specific legal rights and you may also have other rights which vary from state to state.

HOW TO ORDER

The *quickest* and best way to buy your new D-Tex Detector is to contact the Regional Headquarters in your area (see back page). They will take care of your needs personally or supply you with the location of your closest authorized D-Tex Dealer. If for some reason you desire to order your D-Tex Detector directly from the factory (which we do not recommend) please use the order blank you find inserted in this catalog and follow the instructions given.



Regional Headquarters Program

COMPLETE TREASURE OUTFITTING SERVICES!



Note:
This Region
Also includes Alaska

Note:
This Region Also
Includes Hawaii

**CONTACT
US
TODAY!**

FOR:

- METAL DETECTORS
- ACCESSORIES
- BOOKS
- CLASSES
- INFORMATION

**OVER
150,000 Hours
of Detector Experience!
D-TEX REGIONAL DIRECTORS**

The Nation's Best!



**Jerry Pattee
Found Enterprises**
65 Auburn St.
Auburn, MA 01501
AC-617-832-3721

1



**Pat & Mary McCollum
Unified Treasure Hunters**
11602 Garland Rd.
Dallas, TX 75218
AC-214-328-1223

6



**Gary & Arlynn Bischke
Outdoor Outfitters**
705 Elm Ct.
Waukesha, WI 53186
AC-414-542-7772

11



**Johnny Blunk
Suburban Detectors**
3169 Spring St.
Fairfax (D.C. Area) VA 22030
AC-703-273-2542

2



**Jerry Eckhart
Southwestern Treasure
Outfitters**
4226 Old Jacksboro Hwy.
Wichita Falls, TX 76302
AC-817-767-3939

7



**Art & Marlette Steinke
Mid-West Metal Detectors**
8338 Pillsbury
Bloomington, MN 55420
AC-612-881-5254

12



**Dorian T. Cook, Sr.
Tri-State Treasure Outfitters**
2163 Sevenhills Dr.
(SEVENHILLS PLAZA)
Cincinnati, Ohio 45240
(513) 742-3374 Bus.
or 742-0597 Res.

3



**Cliff Williams
Mid-South Metal Detector Sales**
3190 Summer Ave.
Memphis, TN 38112
AC-901-452-8860

8



**Chuck & Pat Clevenger
Clevengers Detector Sales**
8206 N. Oak
Kansas City, MO 64118
AC-816-436-0697

13



**Stu Auerbach
Kellyco Detector Distributors**
1443 S. Orlando Ave.
Maitland FL 37521
(Orlando Area)
AC-305-645-1332

4



**Ralph Hedrick
Arrowhead Supply**
330 S.W. 28th St.
Oklahoma City, OK 73109
AC-405-634-7128

9



**Don Jarman, Charles Bennett
Gold Prospectors Supply**
1441 Rand Ave.
Carson City, NV 89701
AC-702-883-8444

14



**Jim Mitchell
Confederate Ordnance**
P.O. Box 66075
2202 Government Blvd.
Mobile, AL 36606
AC-205-473-3731

5



**Bob Wolf & Bob Grant
Treasure Emporium**
6507 Lankershim Blvd.
North Hollywood, CA 91606
AC-213-985-5217

10



**Harry & Lucille Bowen
Bowens Hideout**
S. 1823 Mt. Vernon
Spokane, WA 99203
AC-509-534-4004

15

WE SELL TREASURE HUNTING!