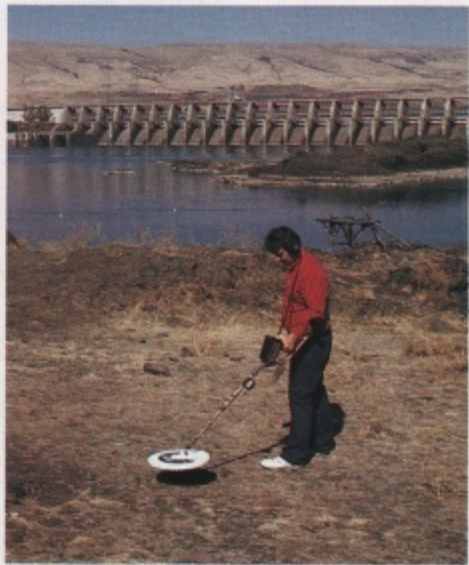
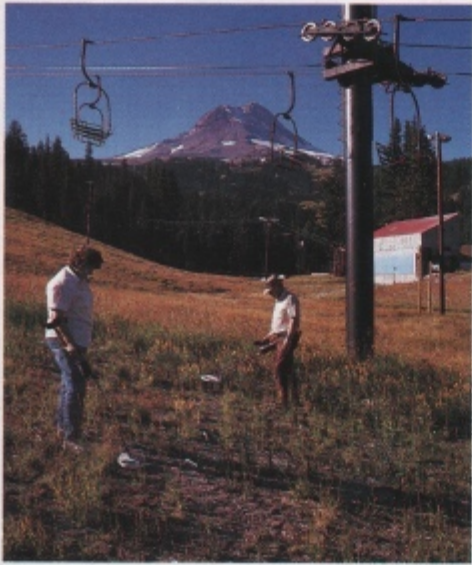


COMPASS

World's Finest Professional Metal Detectors



COMPASS...



Search coils require very precise peaking and tuning. Compass has engineered precision calibration equipment to ensure maximum depth of detection and stability.



As receptionist I will be pleased to direct your call to a Compass employee for assistance with literature request, product information or customer service.



Quality is built into our products by each employee. All detectors are environmentally cycled for very hot and cold temperatures. The electronics are power cycled for 24 hours to ensure that Compass supplies the industry's best quality.



Compass is committed to setting the industry standards for metal detector technology development. This commitment to performance will ensure that when major circuit design breakthroughs occur, Compass will be the forerunner.

Message from the President

As Compass begins its third decade in the metal detector industry, I want to thank all our customers who have made our products a success. Compass detectors have unearthed thousands of dollars worth of treasure for hobbyists and professionals around the world.

Compass is introducing three new models: Coin Scanner Pro, Coin Scanner Jr., and the 77 Auto Legend. These detectors offer improved performance, reliability and ease of use for new or experienced users. For competition hunters, we have brought back the legendary 77B Auto, renamed the 77 Auto Legend, with updated features.

Future plans include using surface mount circuit board technology to achieve a breakthrough in design for 1990 models. Our expanded engineering staff is refining prototypes surpassing anything that can be made using conventional technology.

We will continue to offer the widest range of models at reasonable prices. We constantly improve our existing models by using new technology and the suggestions of our staff and customers. If you have suggestions, please write or call with your ideas.

If you are new to the sport of treasure hunting, please contact us to receive the name and address of the treasure hunting club nearest you. Our staff has had many years of TH'ing experience and will be happy to answer any questions you may have regarding your detector.

I wish you many years of enjoyment with your Compass metal detector. Treasure hunting is a rewarding outdoor activity that everyone in your family can do no matter their age. It is educational and profitable as well as entertaining. Please write to us about your adventures and unusual finds.

Whether you are looking for coins, relics or gold, Compass has the perfect detector for you.

Denny McCoy

COMPASS
ELECTRONICS CORP.

The Hobby That Pays in Many Ways!

One of the more enjoyable family hobbies is searching for all kinds of metal treasure items with a modern metal detector. Many find this to be a financially rewarding hobby as well. Treasures of all kinds are being found: gold and silver coins, relics, gold rings, jewelry, gold nuggets, silver, war artifacts, and even rare bottles from forgotten trash dumps of the old ghost towns.

With a little research, you will find many treasure stories exist around your own area... the old timer who buried his gold coins and then suffered a sudden death... an outlaw's hidden cache from the past. It takes thorough research and a high performance Compass metal detector to help you pinpoint the find!

The really "big finds" are not being made by professionals alone. Thousands of treasure hunters, young and old, are discovering that coin shooting can be very profitable. The rewards are not only monetary. The benefit of fresh air and the exhilaration of walking and bending accompany the thrill of discovery.

Many find that joining a local treasure club can provide a wealth of information regarding better operation of a metal detector, as well as possible clues to good hunting sites. Call Compass for a treasure club in your area.

If you use your detector seriously, it realistically could pay for itself many times over with the coins, gold rings, and other rare artifacts which are being discovered daily by the hobbyist. It is

estimated that there are more coins lost or hidden than in circulation today. Countries with ancient history are producing some incredible, historical artifacts. Many of these historical items are being donated to museums to be enjoyed by everyone.

For those hunters who are fortunate and live near a gold-producing stream, the modern VLF-ground eliminating detector is invaluable for helping them find individual gold nuggets and an occasional gold or silver vein. Gold nuggets from the size of a grain of rice up to the size of a fist or larger are being recovered.

Compass hopes you join our recovery team and that you find the hobby to be as enjoyable as we have.

What Will They Detect and How Deep?

Metals and magnetic minerals (iron ore or black magnetic sand) are detectable with metal detectors. Metal objects are those that will conduct electricity, e.g., gold, silver, copper brass artifacts, lead, coins, rings, watches, jewelry, war relics, treasure cache, post hole banks and many others.

The larger the metal item, the deeper it will be detected. Another factor that determines depth of detection is the size of the search coil itself. For larger objects, the larger search coils will add increased depth of detection and ground coverage.

Compass' 12" Deep Scan search coil will detect larger objects 20% deeper than the standard 8" search coil. Our 16" Ultra Deep Scan search coil will detect 40% deeper for most targets.

Mineralization of the soil varies from area to area. As the ground mineralization increases, the depth at which any metal detector will find a given object decreases.

Performance of a detector should never be measured by air sensitivity. Depth at which a given object can be detected in your ground mineralization by the different competitive detectors is the only true measure of performance.

Your local detector dealer can assist you with this and other performance information.

Since some metal objects oxidize and leach out into the soil, the length of time that they have been buried will also have a bearing on how deep they can be detected. Some small coins will appear to be much larger to the metal detector if buried for many years. Many treasures that were buried in a tobacco tin have been found by detecting the tin itself which has rusted and leached into the soil, creating a very large target for the metal detector.

The Detector Lady

The "Detector Lady" is known as the person to call in Northern California when a valuable wedding ring has been lost, a spent bullet may prove a person innocent, or a recreational treasure hunter needs help in adjusting a metal detector for the first time.

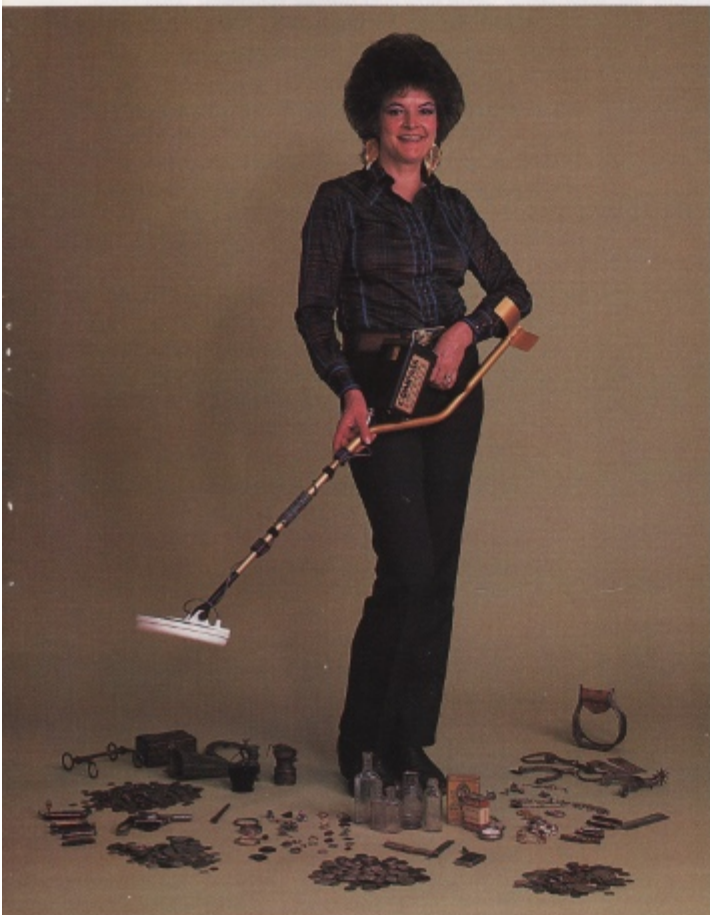
For Trish Clarke, owner of BTR Detectors and mayor of Anderson, California, every day is a new challenge since she started her metal detecting hobby in the late '70's.

Finding treasure such as rings, old guns, and coins isn't difficult when you learn how to use your metal detector, according to Trish. Her enthusiasm for treasure hunting is catching when you view the number of items that Trish has found over the years. Working with people and instructing new treasure hunting enthusiasts are some of Trish's greatest pleasures. That's why she spends so much of her time teaching recent metal detector purchasers how to use their new machine.

Trish has been successful finding many wedding and class rings, one of which included a diamond wedding band with a value exceeding \$2,000. Her coin finds, although uncounted, are impressive when considering that Anderson, California, has a population of only eight thousand people.

One of her most rewarding finds was an \$18,000 silver cache. A client had buried it some years prior and had forgotten its location. See photo on front of this brochure.

On an occasional summer weekend you can expect to find Trish on one of California's famous gold producing streams using her Gold Scanner detector and North American Gold Dredge.



Treasure Hunting Widow

Arlynn
Bischke



Arlynn Bischke was fascinated with what her husband, Gary, and his treasure hunting friends had found in their area. While tired of being a "Treasure Hunter's Widow," yet interested in local history, Arlynn decided to try treasure hunting.

Preparation was natural for Arlynn because of her school teaching experience. She studied equipment, site location, and hunting techniques. Her main goal was to find as many items as possible with only a limited amount of time.

Wisconsin's abundant lakes and resort areas provided ample hunting sites. Trips to the library revealed places unknown to local treasure hunters. From old newspaper ads, maps, and county records, Arlynn pinpointed the site of a resort that had operated from 1867 to 1938. Currently the site of private homes and a rock-filled shoreline, the original bathing area was difficult to determine. After receiving permission from land owners, Arlynn began hunting. Her results were poor until she moved back 100' from the shore and found a tag stamped "Waukesha Beach." Within a few weeks, she found old silver coins, silver and gold jewelry (including class rings from the early teens). Arlynn and her hunting buddy, Nicky, were reluctant to share the location with anyone, including Gary. It was nearly 3 years before anyone was invited to join them at this site.

Arlynn invited friends to join her in hunting another small bathing pond and its weed-infested grounds. Since others passed up her offer to hunt in such an unlikely location, Arlynn went alone. She found many old coins, a ladies ring with 4 diamonds and 2 rubies (appraised at \$4,000), a mens 14K gold wedding band, a 1927 class ring, and her first Shield nickel. Her research had revealed that this was the site of the only pond within 5 miles of an early trading post.

After finding more than 10,000 coins and 400 gold rings, Arlynn found her

first gold coin. But, when asked what her best find is, Arlynn responds "joining the hobby; it's not what is found but the excitement of what might be found." Arlynn is gratified when she returns a long lost class ring or ID bracelet. She once received a hug as well as a \$100 reward for finding a lost wedding ring.

Determination and a willing spouse have been the greatest aids to Arlynn. Credit for some of the pictured coins is shared with Gary, also an expert treasure hunter. As dealer/distributor, Arlynn and Gary deal with both amateur and professional hunters. Much is learned by all in the "little chats" that occur between customers and Arlynn and Gary.

Tips from Arlynn: Be careful in your site selection, choose quality equipment, do what works for you, and always go for the "iffys."





Allan Cannon has been fascinated by metal detecting since he was nine years old. Since then his childhood curiosity has grown into a profession. Allan works at COMPASS Electronics suggesting, evaluating, and testing new detector designs. Enthusiasm for metal detecting led Allan to be one of the co-founders of the Oregon Treasure Trails Society in 1982. From competition hunts in which he has participated, Allan has won more than 70 trophies.

Coinshooting is Allan's specialty, with over 200,000 coins already found. He also enjoys the rich historical significance of finds from battle sites. He hunted the site of the 1877 Nez Perce Indian War and found numerous bullets, buttons, canteens and personal items.

Favorite hunting places for Allan include beaches, schools, parks, churchyards,

homesteads, fairgrounds, and grange halls. He finds it particularly challenging to hunt an area considered worked out, finding treasures missed by previous hunters.

Allan suggests that new detector owners take the necessary time to learn about each control on the detector. Be persistent and patient, just as if you were learning a foreign language. Don't try to learn too much too fast or the result will be discouragement.

When detecting an unfamiliar area, hunt the perimeter first. Look for the obvious, such as a place of heavy traffic. Work in and around trash—don't shy away from it. Old foot paths are often littered with coins and jewelry.

Allan believes that 95% of treasure hunting effort is spent in research. Take the time to look into the history of an area to discover past and current uses.

While only one or two out of 100 wild cache stories will yield anything of value, be sure to check each one out. Many will be dead ends, but some can lead to lucrative results.

Be sure to follow leads thoroughly. If you wait, someone may discover the cache you so carefully researched. Allan once waited five years to get permission to hunt for a cache. When he finally gained access, someone else had already been there, leaving freshly dug holes as evidence.

Buried treasure isn't always what a treasure hunter expects. Once Allan got a strong signal of something buried very deep and knew from experience that this might be the sign of real treasure. After 15 minutes of digging, he found a metal box wired shut. Inside were the skeletal remains of a small animal. Allan carefully returned the "treasure" to its burial place.



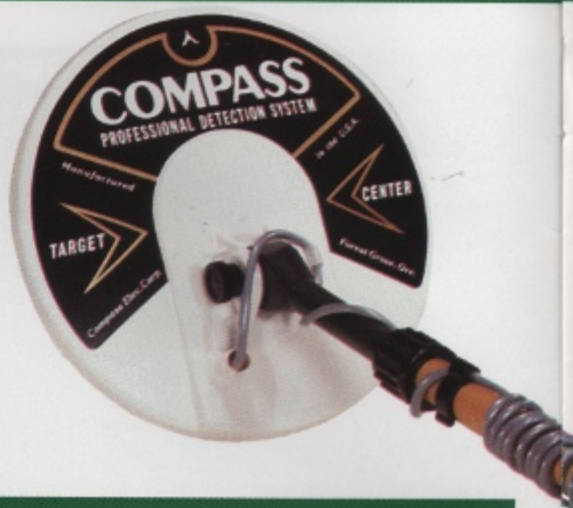
COMPASS The Hot New Scanners

New for 1990 COIN SCANNER PRO COIN SCANNER JR.

- More features
- Increased detection depth in moderate mineralized soils — up to 25%

Features common to both COIN SCANNER models

- TRASH OUT CONTROL - Silent search operation eliminates trash items
- ON/OFF POWER LEVEL CONTROL - Controls power being radiated into the ground to obtain smooth operation
- MODE SELECT TACTILE SWITCHES - Select either slow motion TRASH OUT or non-motion (all metal) PIN POINT
- LIGHTWEIGHT - Less than 4 lbs. including batteries
- THREE TARGET TONE MODES - Single, dual or tri-tone selectable
- AUTO NOTCH - Detects U.S. nickels and certain rings that discriminate only detectors will not detect when set to eliminate pull tabs.
- OPERATES FROM 8 EA. 1½V AA BATTERIES. Twenty plus hours of battery life.
- HIP MOUNTABLE
- HEADSET JACK



For the treasure hunter who does not require a metered target I.D. detector, the COIN SCANNER JR. provides overall performance and depth of detection equal to the COIN SCANNER PRO. A target light indicates each target for night hunting and provides a battery check each time the detector is switched on.

COIN SCANNER JR.



COIN SCANNER PRO

This exciting new generation detector designed by project engineer, George Payne, will set the standards for the 1990's. With simplicity of operation and deep detection, all hunters will find it a pleasure to use.

- Easy view metered target identification locks on and holds each target until reset or coil sweeps over another target.
- Metered coin depth to 12"
- Lighted meter for dusk or night hunting
- Front panel charger jack for optional on board rechargeable battery system

Our Most Popular Line of Detectors Ever!

XP-PRO PLUS

This is our most popular metal detector. Sales throughout America and the world have proven that this design concept is what the serious hunter wants: unbeatable performance, depth of detection, smoothness over mineralized ground, and the ability to eliminate or identify trash items on its target meter. Whether this is your first detector or you desire to update current equipment, give serious consideration to a COMPASS XP-PRO PLUS.

Controls

- TRASH OUT CONTROL - Silent search operation eliminates trash items such as nails, foil, bottle caps, pull tabs, and even screw caps.
- ON/OFF POWER LEVEL CONTROL enables operator to control how much power is being radiated into the ground to obtain smooth operation for the conditions.
- NOTCH LEVEL CONTROL WITH ACCEPT/REJECT TOGGLE SWITCH - Detects rings and U.S. nickels that "discriminate only" detectors will not detect when set to eliminate pull tabs. Auto notch setting does this automatically.
- MODE SELECT TACTILE SWITCHES - Select either slow motion TRASH OUT or non motion (all metal) PINPOINT

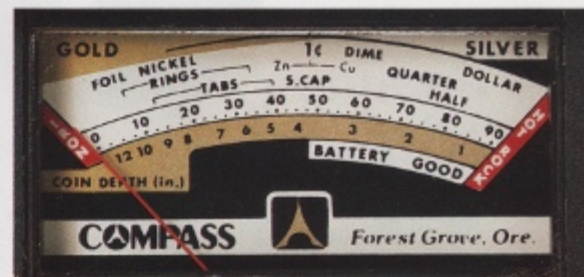


Unique XP PRO PLUS Features

- METERED TARGET I.D. and battery check
- METERED COIN DEPTH
- COMPASS' exclusive patent-pending varifilter concept provides see-through performance of a two-filter detector, yet the pulling power of a four-filter design when operating in medium to heavy mineralized ground. This breakthrough in electronic circuit technology ensures top performance in either low or high conductive soil.
- Signal supreme sound system is powered by its own 9V battery. Two additional 9V batteries power the signal process circuitry. Advantage — no loading of signal process components when targets are detected with strong speaker signal.
- To make an easy-to-operate detector even easier, Compass has added a preset position to each control. If your enthusiasm and excitement for your new detector will not allow for a complete reading of instruction manual, simply set each control to the preset marker and start metal detecting. What could be easier!
- For maximum sensitivity, all scanners come complete with a mechanically rugged 8" waterproof co-planar concentric search coil.
- LIGHTWEIGHT - 3¾ lbs. including batteries



Hip Mountable — Electronic housing slides off search rod and onto operator's belt with built-in belt clip. Ideal for long periods of use or during treasure hunts requiring speed. The ultimate in lightness and balance. Featured on all Scanner models. Rod and 8" search coil only 2¼ lbs. Less than 2 lbs. with 6" coil.



Meter identifies and locks on many targets for better identification, and provides depth readout of coin-sized objects.



Designed to provide optimum programmed circuit filter response in ground high or low in mineralization. This is an industry FIRST!

COMPASS' X-100 is world-proven to be the premier detector for all around treasure hunting versatility. No other detector will equal its depth of detection under the many levels of mineralized ground throughout the world.

SPANISH MANUAL AVAILABLE

Controls. Features

AUDIO TARGET TONE IDENTIFICATION

In this mode of operation each individual target has its own tone. Certain targets such as foil have a lower tone, while others such as a silver dollar have a very high tone.

FOUR MODES OF OPERATION - All Metal, Ground Balance Discriminate, TR Discriminate and Target Tone Identification.

FILTER RESPONSE - This COMPASS exclusive is an important new innovation in metal detector design. It provides operator control of the circuit filters for obtaining peak performance for both high or low mineralized ground. The "Normal" setting pulls a target through mineralized ground by scanning a larger area during analysis of the target. A "Sharp" setting for low mineralized areas analyzes the target for only a short duration which provides better separation of multiple targets and unbeatable depth of detection.

NOTCH DISCRIMINATION - Find nickels and gold rings while rejecting most pull tabs, or set to detect only a particular target. Three selectable **NOTCH WIDTH** settings for extra range.



GB DISC SENSITIVITY - Controls sensitivity of GB Discriminate and Target I.D. Meter. Use Power Level control to set sensitivity of All Metal mode. Then use GB Disc Sensitivity to set sensitivity for discriminate mode. This technique provides the ultimate control of mineralized ground and electrical or atmospheric interference conditions. Most competitive detectors do not have this dual control capability.

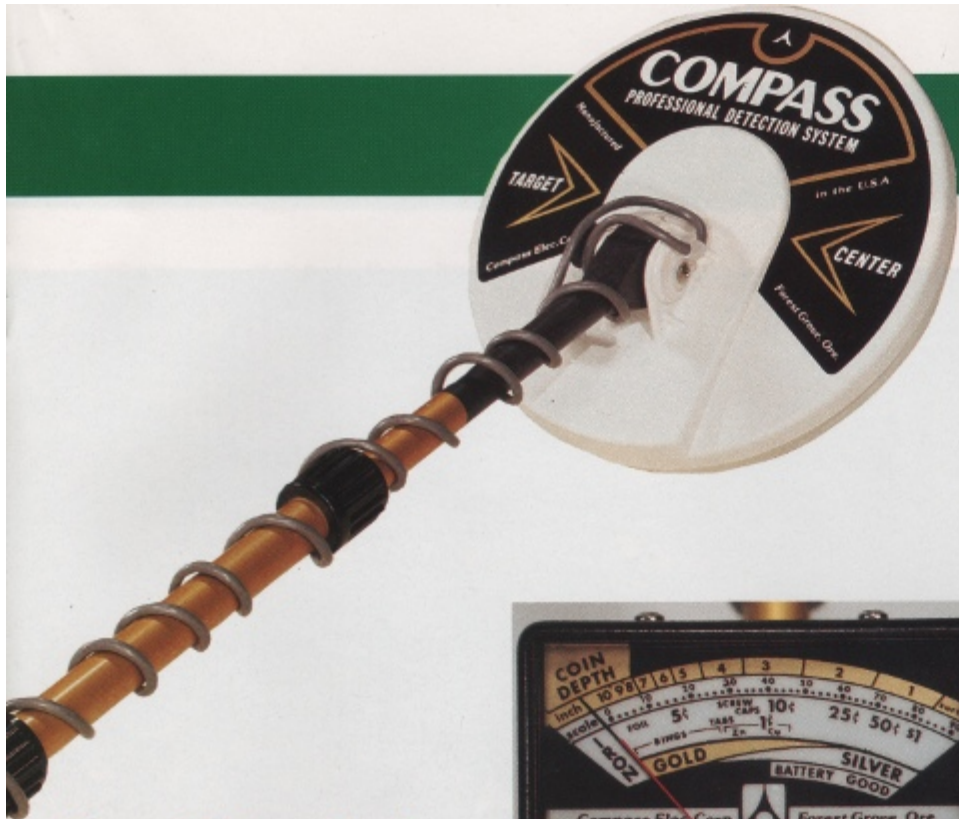
GROUND BALANCE - Tunes out mineralized ground in All Metal, GB Disc and T.T.I. modes.

VARIABLE AUDIO SPEAKER TONE - Matches the speaker audio frequency to what you hear best for more depth.

AUTOMATIC TUNING - This important setting can be extremely helpful in many detecting areas. Its uses include: salt water beach hunting and gold nugget prospecting.

DISCRIMINATE CONTROL - Adjust to distinguish between "good" and "junk" (nails, bottle caps, pull tabs and screw caps) items. Extended range not incorporated on many competitive detectors that provides the following: zero discriminate setting for hot rock identification while prospecting. A position is also provided to eliminate salt water in TR Disc for beach hunters.

POWER LEVEL - Circuit front end sensitivity to control amount of power being radiated into the ground. Choose a level according to soil mineralization, electrical or atmospheric conditions and operator proficiency. New Ultra Max setting provides unbeatable depth where conditions allow.



Preset Controls

To make an easy-to-operate detector even more convenient, all controls are now marked with preset positions. The new operator can turn controls to preset setting, turn detector on and start hunting!

Once the basics are mastered, you still have the flexibility to set controls beyond the limits of factory set detectors.

Other Features

COMPASS has answered thousands of serious metal detector user requests to locate the meter in a functional and readable position. This important advancement means **NO MORE BENDING AND SQUINTING**. Large and easy to read, the meter indicates certain targets and coin depth. Revolutionary mode-of-operation dual push buttons are functionally located. Push **BLACK** for All Metal and **RED** for Discriminate.

- **AUTOMATIC BATTERY CHECK** for approximately 4 seconds each time you turn on your **CHALLENGER**
- **EARPHONE INPUT JACK**
- **METERED COIN DEPTH** of U.S.-sized coins
- **SPECIALLY DESIGNED**, full-scan, waterproof, lightweight co-planar concentric search coils
- **METAL COIL CONNECTOR** for improved reliability
- **EXTERNAL INPUT JACK** for battery charger - Rechargeable batteries do not need to be removed for charging.
- **EXTRA LARGE 3" SPEAKER** for unequaled response
- **DUAL ROD LENGTH ADJUSTMENT** - Collapses unit to smallest size in industry, eliminating need to disassemble for storage.
- **AN 8" CO-PLANAR CONCENTRIC SEARCH COIL** is included. Our 6" Ultra Light can be substituted at the time of purchase if requested.



FULL-TIME METERED TARGET IDENTIFICATION - In all modes. Set to high level of audio discrimination to eliminate pull tabs / screw caps while correctly identifying nickels and certain rings on visible target meter, and with just one sweep over target.

Specifications

USES - Coin and jewelry hunting, prospecting for gold and other minerals, relic hunting, beachcombing, cache hunting, treasure hunting, underwater recovery

DEPTH CAPABILITY - In All Metal mode at Ultra Max Power Level, 12" - 14" (27.9 cm - 33 cm) on U.S. coin, 20% additional depth with optional 12" search coil, 40% additional with optional 16" search coil. Depth will vary with ground mineralization and operate mode-maximum depth of 6' on a very large object.

WEIGHT - Operating with 8" search coil-5 lbs.

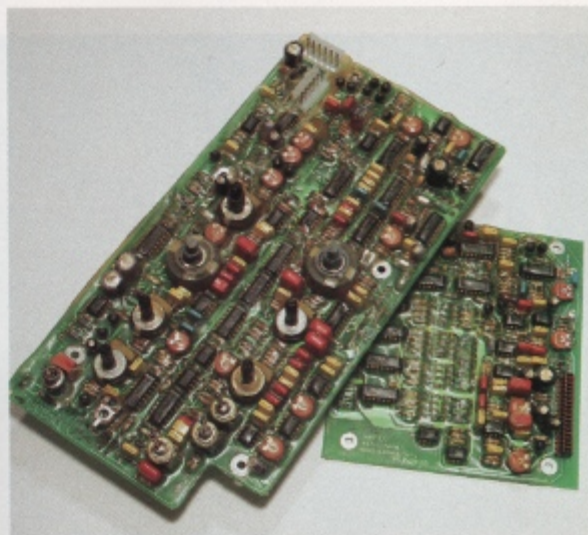
POWER REQUIREMENTS - 12V at full audio load to 18V, factory equipped with 12 free Nicad rechargeable cells and charger

FREQUENCY - 13.77 kHz, crystal controlled

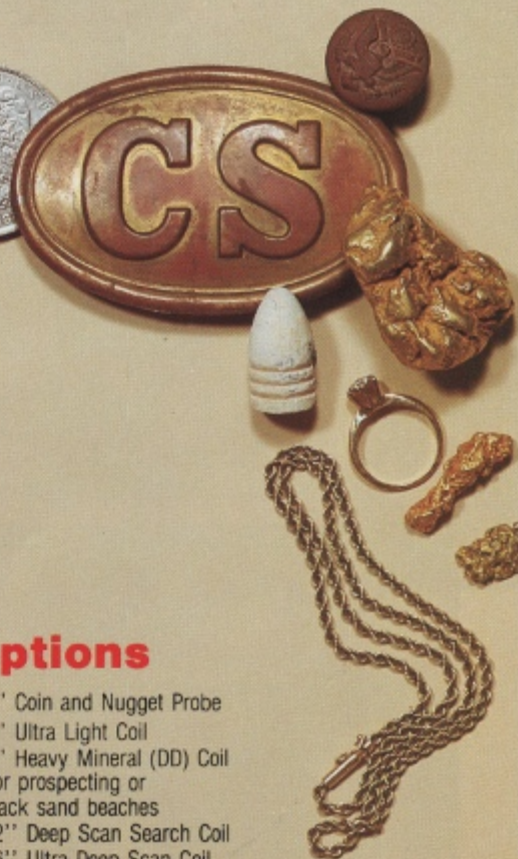
AUDIO FREQUENCY - Operator adjustable from 180 Hz to 600 Hz

TEMPERATURE RANGE - 33° to 100°F (0°-38°C)

HOUSING - All-metal electronic housing for better shielding against electromagnetic radio frequency interference



State-of-the-art electronics, environmentally sealed, handle the toughest weather conditions for drift-free operation. Special coating provides the ultimate high impedance circuit protection in very humid or salt water hunting areas.



Options

- 3" Coin and Nugget Probe
- 6" Ultra Light Coil
- 8" Heavy Mineral (DD) Coil For prospecting or black sand beaches
- 12" Deep Scan Search Coil
- 16" Ultra Deep Scan Coil
- Back-lighted Meter for Night Operation
- Hip Mount Platform Conversion Kit
- Epoxy-filled Coils for Water Hunting
- Many Others



Gold Scanner Pro



Gold Scanner

Gold Scanner

All of the performance and features of the Gold Scanner Pro less target I.D. meter.

Fever!

Two High Performance GOLD SCANNERS

Compass' Gold Scanners are designed to not only provide top-notch performance for the prospector, but the beach, relic, and coin hunter as well. There is a true ten-turn wire wound manual ground balance control with an expanded range. This allows settings to eliminate the effects of positive salt water or the heaviest mineralization.

On some beaches salt water presents more of a problem to the detector than common inland mineralization since the beach may be low in conductive minerals. This is typical of the Gulf Coast and much of the East Coast of America. West Coast beaches and gold nugget hunting areas are, in most cases, higher in conductive minerals, so the serious hunter will insist on the manually ground balanced detector. No automatic system can provide the true control that the professional or seasoned hunter demands.

The experienced electronic prospector knows that those tiny nuggets are not found under ideal circumstances. Mining areas are generally heavily mineralized, and a lot of territory must be covered. Such areas saw much activity in the early boom and bust era, and those who blazed the trails for prospectors often left behind small reminders like sardine, bean and tobacco tins, and an assortment of boot nails, etc. These small bits of rusty tin and iron can play havoc with the hunter who goes to the field ill equipped. To be able to handle all field situations a good "gold detector" needs the versatility of a discriminate circuit. The Gold Scanners feature the new Varifilter GB Discriminating circuitry that provides slow or fast sweep performance, and a true "zero" discriminate setting. In many applications it allows the hunter to handle the bothersome hot rocks.



Nuggets from match head to fist size are being found with metal detectors. Gold in quartz as shown above is even more valuable as a specimen than the value of the gold itself. The largest gold nugget in existence (720 oz.), which is on display at the Nugget Casino in Las Vegas, was found with a metal detector. It was sold to the Casino for \$1,000,000.

Features

- **METER TARGET I.D.** - With coin depth and battery check (Gold Scanner Pro only)
- **ON/OFF POWER LEVEL** — Allows operator control of power being radiated into ground for smooth operation.
- **GROUND BALANCE** — This is a quality electrical ten-turn wire wound control with expanded range from salt water to high minerals.
- **TRASH OUT** — Provides a silent search motion discriminate mode featuring a newly developed patent-pending varifilter circuit to ignore the bothersome trash objects. Unlike some competitive models, sweep it fast or slow while obtaining maximum depth.
- **THRESHOLD** — Manually set audio threshold in the All Metal mode or switch to the Auto tune position for automatic maintenance. A must for prospecting in very high mineral ground or searching a black sand salt water beach.
- **MODE SELECT TACTILE SWITCHES** — Select either slow motion Trash Out or non motion All Metal.
- **HIP MOUNTABLE**
- **LIGHTWEIGHT** — 3½ lbs.-Gold Scanner, 3¾lbs.-Gold Scanner Pro.
- **POWER** — 3 each 9V batteries.



COMPASS Gives You Liberty!



Liberty 150

One of COMPASS' most popular detectors for all types of treasure hunting, including treasure hunt competition. Performance is very close to detectors that are much more expensive!

Incorporates All Metal non-motion Pin Point mode. Eliminates ground mineralization automatically.

Features

- VLF Automatic ground balancing slow motion discriminator
- Automatic tuning
- POWER LEVEL control
- Two modes of operation for target signal comparison - ALL METAL and variable TRASH OUT
- Target signal indication and battery check L.E.D. light
- Headset input
- Powered by two 9V batteries
- Exceptional balance and lightweight - 2¾ lbs.
- 8" waterproof search head. Optional search heads include feather lightweight 6" (9 oz.), deep scan 12" and 16", or 3" gold/coin probe



Liberty 50

COMPASS' simplest professional quality detector. Set each control to preset marker and start detecting. Tuning and ground elimination are set automatically. Excellent starter detector for coin, beach, relic and cache hunting.

Features

- VLF automatic ground balancing slow motion discriminator.
- Automatic tuning
- TRASH OUT control
- Power Level control
- 6" waterproof co-planar concentric search head
- Headset input
- Powered by 1 each 9V battery
- Ultra lightweight 2 lbs.



Coin Hustler

Operating at 100 kHz, this hot little TR detector excels in certain field conditions. Because of its frequency, it can see through some small, rusty iron objects while detecting coins and nonferrous artifacts. Since modern motion detectors don't have this see-through capability, there are situations when the serious user insists on a Coin Hustler. These include around foundations, construction sites where buildings have been torn down leaving an abundance of nails, swim areas or beach sites littered with hair pins, and Civil War sites heavy with boot nails.

- Weighs less than 2½ lbs.
- Battery check LED light
- 8" waterproof search coil
- Powered by 6-AA batteries (included)

77 Auto "Legend"

Compass is proud to introduce the new 1990 version of the legendary "Yukon" 77B Automatic.

Compass' original 77B Automatic is today's most sought-after detector on the used detector market. Why? Lightning fast speed and the ability to eliminate small rusty items make the 77B Automatic the unequalled choice of serious hunters seeking big prizes and championships in treasure hunt competitions.

The 77 Auto "Legend" is well-suited to other types of treasure hunting as well. Slow motion, discrimination detectors can miss good targets masked by small rusty items such as nails. But the 77 Auto "Legend" does not detect these small rusty objects because of its high operating frequency of 100 kHz. Thus, the "Legend" is an ideal detector for Civil War campsites and ghost town relic hunting. Other popular uses for the 77 Auto "Legend" are jewelry hunting on certain beaches, and hunting around old foundations cluttered with nails.

Features

- VARIABLE AUTO TUNE - Adjusts from very slow to lightning fast
- PRESET POSITION - Preset marker for turn-on-and-go operation
- SENSITIVITY CONTROL - Variable to match soil conditions
- SPECIAL POWER BOOST - Provides extra power for certain areas
- THRESHOLD CONTROL - Adjustable from silent to desired level
- HIP MOUNTABLE - Electronic housing slides off handle and onto operator's belt
- POWER - Three 9V batteries included
- BATTERY CHECK
- HEADSET INPUT
- 8" DD WATERPROOF SEARCH COIL
- WEIGHT - 3½ lbs. total (2¼ lbs. for search rod and coil)

Technology used in the all-new 77 Auto Legend helped Allan Cannon win more than 96 trophies.





1. OPTIONAL SEARCH COILS
 3'' Coin & Nugget Probe
 6'' Ultra Light (thin profile)
 8'' DD Heavy Mineral
 8'' Epoxy-filled, zero buoyancy for water working
 12'' Deep Scan - detects 20% deeper than 8''
 16'' Ultra Deep Scan -detects 40% deeper than 8''
2. COMPASS recovery team ball cap
3. COMPASS recovery team patch
4. COMPASS recovery team belt buckle
5. Back lighted meter kit for X-100
6. Stereo headphone with 90° plug (with volume control)

7. Vinyl detector bag - X-100
 Vinyl detector bag - Scanners, Liberty 150 and Coin Hustler
 Vinyl detector bag - Liberty 50
8. Lower rod with isolator/washers
 Middle rod with velcro cable holders
 The serious metal detector user appreciates the benefits of using different size search coils. An optional lower and middle rod set with pre-wrapped velcro-held cable will provide a quick change and increase your enjoyment.
9. Hip mount conversion kit for X-100
 Includes 5' extension cable and detector platform (not shown)
 Hip mount rod only (as shown)

10. Detector upright stand - X-100
 11. Meter weather cover - X-100
 Front panel weather cover - X-100
 12. Protective search coil covers
 A must if you want your search coil to stay in a like-new condition. Protects water-proofed coil from glass or sharp rocks.
 3'' 12''
 6'' 16''
 8''
- Frequency Shift Box (photo not shown)
- Shifts detector operating frequency to help eliminate interference from other COMPASS or competitive detectors.

Use this chart to choose the COMPASS detector that meets your requirements.

		X-100 Challenger	Gold Scanner Pro	Gold Scanner	XP-Pro Plus	Coin Scanner Pro	Coin Scanner Jr.	Liberty 150	Liberty 50	Coin Hustler	77 Auto Legend
Operate Modes	Trash Out (Motion Discriminate)	*	*	*	*	*	*	*			
	All Metal	*	*	*	*	*	*				
	All Metal (Non-ground Cancel)	*	*	*	*	*	*				
	TR Discriminate (Non-Motion)								*	*	
	Target Tone Identification (T.T.I.)	*				*					
Controls/Panel Features	Metered Target ID	*	*		*						
	Coin Depth Reading Meter	*	*		*						
	Intensity Meter										
	Power Level	*	*	*	*	*	*	*		*	
	GB Disc Sensitivity	*	*	*	*	*	*	*			
	Trash Out Discriminate	*	*	*	*	*	*	*			
	Notch (Accept & Reject)	*	*	*	*	*	*	*			
	Notch Width (3 Position)	*	*	*	*	*	*	*			
	Auto Notch				*	*					
	Manual Tuner	*	*	*						*	*
	Automatic Tune	*	*	*							*
	Manual Ground Control	*	*	*							*
	Ten Turn Ground Control		*	*							
	Automatic Ground Set		*	*	*	*	*	*			
	Ground Control Salt Eliminate		*	*	*	*	*	*			
	Push Button Mode Change	*	*	*	*	*	*	*			
	Trigger Mode Change						*				
	Metered Battery Check	*	*	*	*	*					
	Audio Battery Check		*	*	*	*		*	*		
	LED Battery Check						*	*	*	*	*
Tone Control 180 Hz to 600 Hz	*										
Battery Charger Input	*				*						
Filter Response — 2 or 4	*										
Headset Input Jack	*	*	*	*	*	*	*	*	*	*	
Options	Ten Turn Ground Control	*									
	Back Lighted Meter Kit	*			*						
Battery Quantity	9 V		3	3	3		2	1		3	
	1.5 V AA Rechargeable	12									
	1.5 V Carbon Zinc					8	8		6		
Standard Search Coils	6" Co-planar Concentric	*	*	*	*	*	*	*	*	*	*
	8" Co-planar Concentric	*	*	*	*	*	*	*	*	*	*
	8" DD	*	*	*	*	*	*	*	*	*	*
	Waterproof	*	*	*	*	*	*	*	*	*	*
	Detachable	*	*	*	*	*	*	*	*	*	*
	Electronic and Mechanical Shield	*	*	*	*	*	*	*	*	*	*
8" or 6" choice at purchase	*	*	*	*	*	*	*	*	*	*	
Optional Search Coils	3" Coin & Nugget Probe	*	*	*	*	*	*	*	*	*	*
	6" Ultra Light	*	*	*	*	*	*	*	*	*	*
	8" (DD) Heavy Mineral	*	*	*	*	*	*	*	*	*	*
	12" Deep Scan	*	*	*	*	*	*	*	*	*	*
	16" Ultra Deep Scan	*	*	*	*	*	*	*	*	*	*
Other Features	Hip Mount Option	*	*	*	*	*	*	*	*	*	*
	Hip Mountable (Standard)		*	*	*	*	*	*	*	*	*
	Crystal Controlled Frequency	*	*	*	*	*	*	*	*	*	*
	Weight lbs./oz. (approx.)	5.0	3.8	3.5	3.8	3.7	3.5	2.7	2.0	2.5	3.5
	Aluminum Housing	*	*	*	*	*	*	*	*	*	*
	ABS Housing	*	*	*	*	*	*	*	*	*	*
	Operating Frequency 13.77 KHz	*	*	*	*	*	*	*	*	*	*
	Operating Frequency 100 KHz	*	*	*	*	*	*	*	*	*	*
Dual Rod Length Adjustment — 24" collapsed length	*	*	*	*	*	*	*	*	*	*	
Initial Preset Control Setting	*	*	*	*	*	*	*	*	*	*	

Controls/Features Which Provide Some Advantage for Specific Types of Metal Detecting —

SALT WATER BEACH HUNTING

1. A manual ground control which has the range to eliminate salt water. This is only important if the beach sand is very low in mineralization, characteristic of many beaches on the East and Gulf Coast of America. This feature also provides the maximum depth possible when hunting in the all metal mode which is popular for beach hunting. Very few detectors have this design feature, so ask your dealer if the detector of your choice has this capability.

2. Optional 8" DD heavy mineral search coil. This coil is only important if the beach has a very high level of black magnetic sand.

PROSPECTING

1. Ten-turn manual ground control.
2. Discriminate control with zero discriminate setting.
3. Optional 8" DD heavy mineral search coil. This coil is important if you are prospecting or detecting in areas that are abundant in heavy mineral ground and/or have large concentrations of heavy black magnetic sand.

RELIC HUNTING

1. One or ten-turn manual ground control for maximum depth of detection in the all metal mode of operation.

COIN HUNTING

1. Target identification meter. This feature will allow the operator to set the trash out (discriminate) control low to only eliminate iron. This will ensure that all rings and U.S. nickels are audibly detected. The lock-on target I.D. meter can then be used to identify certain trash items such as pull tabs and screw caps. Some rings have same electrical characteristic as certain pull tabs.
2. Notch control. This control will enable the operator to set trash out control high to eliminate all trash items, including pull tabs and screw caps. The notch control can then notch the U.S. nickel back in. Rings that are electrically very close to a nickel would also be notched in. A reject setting can eliminate a band of trash items.

Husband/Wife Team

Pearl and Wick Wickersham started metal detecting in the middle '70's. Wick was the first to get the fever. After attending a couple of organized treasure contests with her husband, the "bug" also bit Pearl and she has been an avid treasure hunter ever since. Although their coins found total thousands, they both admit to a high level of excitement in searching an unexplored site where there is potential for finding something very old. They envy the Europeans and their rich history, with a wealth of treasure just waiting for a search coil to pass overhead to reveal something buried for several hundred years.

Pictured are some of their better finds from parks, schools, beaches, ski slopes, old home sites, and prizes from competition treasure hunts. They have also hunted old dumps and fort sites.

As charter members of the Oregon Treasure Trail Society metal detecting club, the Wickershams strongly encourage responsible use of metal detectors. They recommend that any new metal detector enthusiast join a local detecting club so that the hobby can be quickly learned and enjoyed to its fullest.



COMPASS' 5 Year Limited Warranty

COMPASS ELECTRONICS warrants its metal detectors to be free from defects in materials and workmanship under normal use for a specific period of time. If any defect does exist during the first calendar year after the date of original purchase, COMPASS will repair or replace, at its option, any defective product at no cost to the purchaser except transportation charges. During the second to fifth year after original purchase, COMPASS will replace any defective part, excluding meters, at no charge except for repair labor and return postage. All such repairs will carry a 90-day parts and labor warranty for repairs that were made, with all freight charges paid by customer. This warranty excludes batteries.

Warranty is transferable (to second, etc., owners) during warranty period. This warranty may vary outside of the United States, Mexico and Canada. Check with your importer for details.

COMPASS

ELECTRONICS
FAX (503) 357-1919
(503) 357-2111

P.O. Box 366
3700 24th Ave.
Forest Grove, OR 97116

Sold in your area by: **DETECTOR SALES**
13809 S.E. DIVISION
PORTLAND, ORE. 97236 761-1521
OUTSIDE OREGON CALL:
1-800-542-GOLD