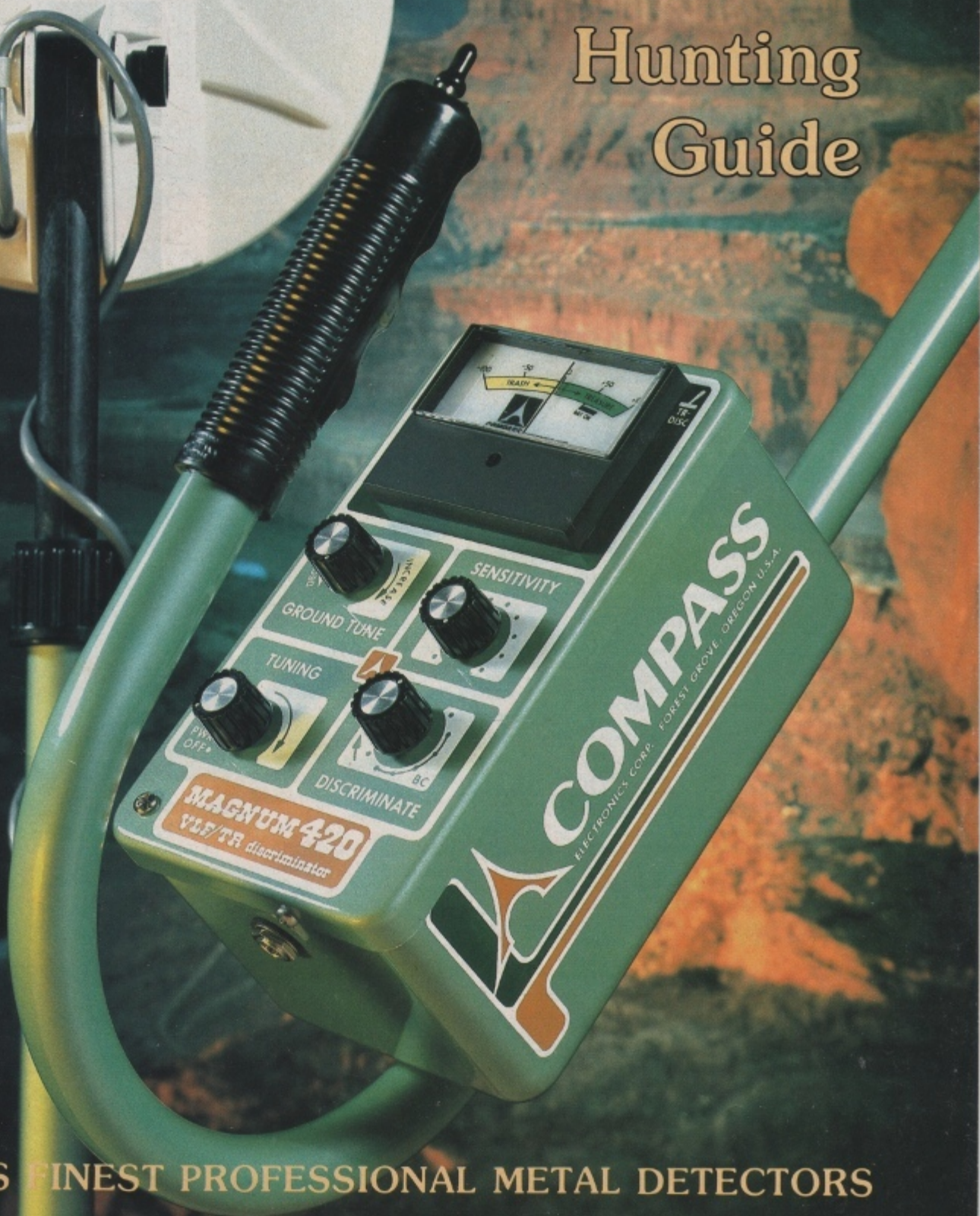


# COMPASS'

## Treasure Hunting Guide

**MAGNUM**  
★ VLF/TR ★  
discriminator

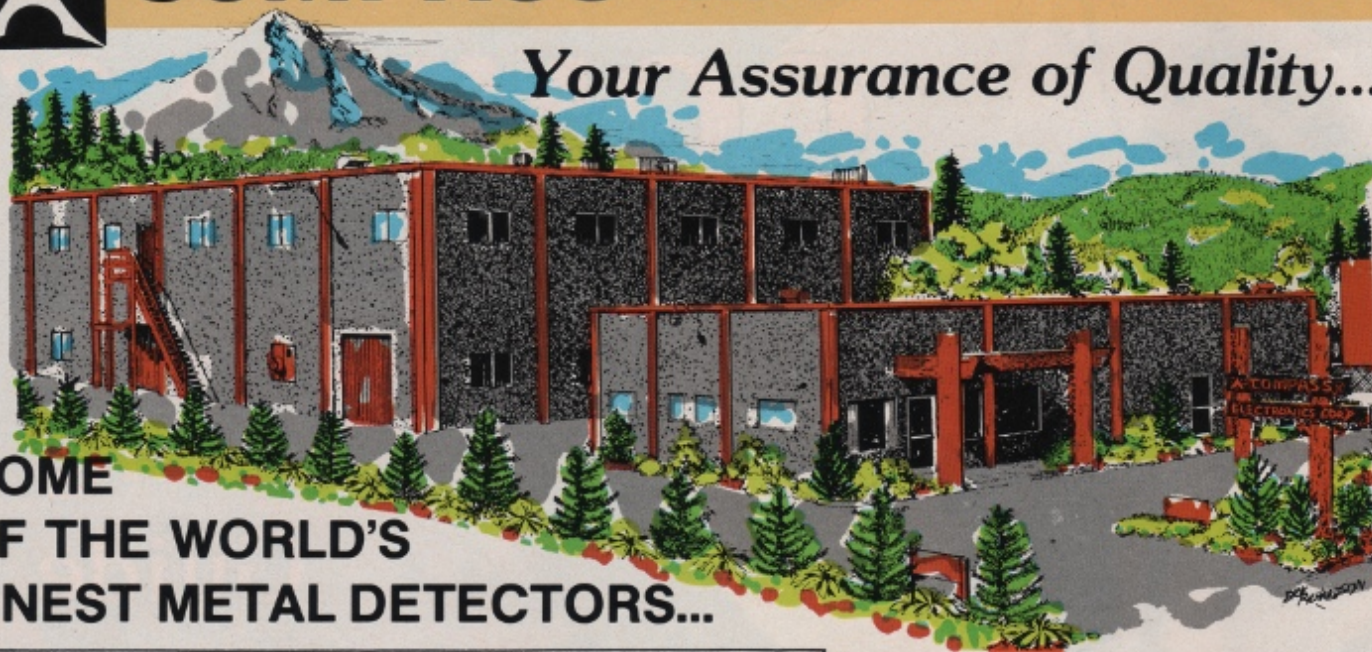


WORLD'S FINEST PROFESSIONAL METAL DETECTORS



# COMPASS ELECTRONICS CORPORATION

## Your Assurance of Quality...



### HOME OF THE WORLD'S FINEST METAL DETECTORS...

503-357-2111



## COMPASS electronics corp.

P.O. BOX 366 • 3700 24th AVE.  
FOREST GROVE, OREGON 97116

Dear Fellow Treasure Hunter:

COMPASS very much appreciates your interest in our professional metal detectors. It is our hope that you find our products to be second to none and that you find the hobby of metal detecting to be as enjoyable, rewarding, profitable and healthy as all of us have.

While thumbing through our catalog, you will see that COMPASS offers a very complete selection of metal detectors with a price range to fit each individual's budget. Study our section on choosing the right detector. It is important for you to purchase the detector that will fit your personal treasure hunting requirements, not only initially, but also in the months to come.

The COMPASS line of detectors has evolved from our original TR detectors (the B Series) on to a line of very revolutionary TR Discriminators (the Judge Series), which now enables the treasure hunter to eliminate certain trash items. Our newest technology has advanced to the VLF Ground Eliminating line of metal detectors, which enables the operator to eliminate the effects of mineralized ground so that, when the detector loop is raised or lowered slightly, it will not affect the tuning threshold of the detector. This technology also provides much deeper depth of detection which makes them very ideal for beach searching, Civil War battlefield detecting, or gold nugget searching. The Coin Magnum Series also has this VLF Ground Eliminating characteristic in the discriminate mode of operation. No other metal detector in the world has this characteristic, which is operated at a normal ground search speed.

Many of our COMPASS customers have paid for their detectors many times over. It is truly a hobby which pays.

Again, COMPASS thanks you for your inquiry. Please do not hesitate to contact us again if you have any additional questions. We are always very pleased to hear from our treasure hunting friends and learning how our equipment is meeting their requirements.

Good luck and pleasureable treasure hunting!

Sincerely,

COMPASS ELECTRONICS CORPORATION

Ron Mack  
Co-Founder

### Compass Founders And Management Team



Ron Mack (Left), Henry Gorgas (Center), Don Dykstra (Right)

### Where it all began . . .

During our organization, COMPASS recognized the need for a precision-built, high quality metal detector that would give a higher level of finds than the products that were then being produced. To do this Don Dykstra, Co-Founder and Engineering Manager, invented the wide-scan loop which is still used today on

our B Series detector and many competitive models. This loop concept enabled the treasure hunter to get more than twice the coverage of searched area with each sweep of the search loop. The engineering and circuitry was second to none, and the result was a totally new concept in metal detecting.

Since then COMPASS' phenomenal growth tells the story. From our initial facilities (which were a converted greenhouse in 1971) to the present, COMPASS has built modern engineering, production and marketing facilities covering four acres staffed with the finest technicians, engineers, assemblers and marketing experts to bring you a professional line of metal detectors that are second to none. In addition, thousands of dealers world-wide bring the latest results of COMPASS detector technology to you, the dedicated (or soon-to-be) metal detector user.

# Selecting the right Detector

*Compass Electronics is recognized as offering one of the most complete lines of professional metal detectors in the world. There is a recreational COMPASS metal detector for every need and every budget. In looking through our catalog and reading about the wide selection available, you can be sure of one thing: the detector you decide is right for you has been engineered and manufactured by expert treasure hunting users who care — care about quality, care about durability, and care about dependability, because COMPASS recognizes that the best advertisement for our product is a SATISFIED USER. It is important to us that each customer be satisfied with his purchase and that it has the performance which is expected so that the individual will, in turn, tell another treasure hunter about COMPASS' superior performance, quality and dependability. COMPASS has grown to be a leader in our industry because of this process and we base our future on repeating it for each and every detector sold.*

*COMPASS manufactures the most widely utilized types of detectors in use today: the new, Very-Low-Frequency Ground Eliminators and VLF Discriminators; the Transmitter-Receiver Discriminators; and standard Transmitter-Receiver type Detectors. Below is a description of each and a brief description of the uses they are best suited for. Unfortunately, there is no one detector made in the world which is the most ideal for every detecting application. Therefore, you should select the detector which most closely fits your personal anticipated needs. When purchasing, remember to consider very carefully the hours you will spend detecting and make sure you purchase the detector that will give you the best chance of locating the desired targets. A detector that can give you just a little more depth or capability can very easily pay for itself with just one exceptional find which could have been overlooked by a lesser-performing detector.*

## VLF MAGNUM SERIES . .

### COIN MAGNUMS RELIC MAGNUM 7 AUTOMATIC MAGNUM 240, 320 & 420

The Magnums are VLFs, which means that they operate at a very low frequency (3.7kHz on the Relic Magnum 7 Auto, 5.73kHz on the Coin Magnum, and 10.5kHz on the Magnums 240, 320 and 420). In the standard nondiscriminate VLF ground elimination mode, they have the ability to cancel the effects of mineralized ground and detect as deeply as in non-mineralized ground. The Coin Magnum also has this ground elimination VLF capability in its discrimination mode of operation for unequalled depth of detection while eliminating many of the common items. Because the VLF detectors are relatively new on the market, areas previously passed over by high frequency detectors are now being searched very successfully for those older, deeper finds.

Because of their ground elimination capabilities, the Magnums are ideal for industrial and commercial usage such as locating shallow pipes, conduits, survey markers, corner stakes, etc.

### VLF/Ground Eliminating Discriminators Coin Magnum

The COIN MAGNUM VLF/VLF Discriminators are the most advanced in the Magnum Series. The Coin Magnum is the first detector to truly eliminate the effects of mineralized ground and discriminate against junk items simultaneously at a normal sweep speed. Competitive detectors that discriminate in the VLF mode require a very fast motion of the search loop for them to discriminate on a given item. This is a physical impossibility for many metal detector users. The Coin Magnum will detect as deeply in discriminate as in non-discriminate. Areas which were thought to be hunted out are now yielding many older, deeper and more valuable coins to the Coin Magnum user.

The Coin Magnum will detect a good object deeper than it will discriminate on a trash item which it is set to reject. In other words, a freshly buried penny may be detected at 6" while a bottle cap would not be eliminated any deeper than 4" in the ground. If the bottle cap was at a depth of 5" it would be detected as a positive target. This type of characteristic normally does not give any operational difficulties unless an area is being searched which is abundant with deeply buried nails. Nails, being relatively heavy and slender, will slide down beyond the

discriminate range of the Coin Magnum. In these areas the other Magnum models have an advantage in that they eliminate trash items at any depth. They will not detect the good targets as deep as the COIN MAGNUM however, as they are in a TR non-ground elimination mode.

The Coin Magnum has been found to be especially sensitive to gold, and will pick up many gold rings and gold chains in the full pull tab discrimination that other VLF detectors eliminate. Also, the Coin Magnum is the only metal detector in the world that will detect a nickel while in full pull tab elimination. Surface nickels will still be eliminated; however, any nickel deeper than 2 1/2" in the ground will be detected in full pull tab discrimination. A lower setting of the discriminate control will detect nickels at any depth.

The Coin Magnum also has available as an option a 3" gold nugget probe which is proving to be a very valuable aid to the nugget prospector who is searching in or around boulders, tailings, cracks and crevices, and in any area where the 8" or 12" loop is physically too large.

The Coin Magnum does require a certain amount of patience to learn. However, once the operator has put in this training period they are a pleasure to use.

### VLF/TRs - Relic Magnum 7 Auto, Magnum 240, 320 & 420 Discriminators

VLF/TRs are the most popular selling models because they can be used for a wide range of treasure hunting activities and because of the tremendous number of features offered for the money.

In the STANDARD, non-discriminate VLF mode, the effects of mineralized ground can be eliminated, allowing for as much depth of detection as in non-mineralized ground. This makes them ideal for civil war artifact hunting, coin hunting mineralized beaches, or just general treasure hunting in any mineralized area.

In the DISCRIMINATE mode the vast number of bottle caps, pull tabs, and other junk items prevalent in parks, school grounds, fairgrounds, etc., are rejected, greatly minimizing the bothersome and time consuming chore of digging these targets. Not having to dig every target means more time for digging good items. It is important to note that the effects of mineralized ground are not eliminated in the DISCRIMINATE mode as they are with the COIN MAGNUM.

Although some depth of detection on a coin will be lost in the Discriminate mode and none is lost on the Coin Magnum, the VLF/TRs will eliminate a higher degree of junk items.

## TR DISCRIMINATORS — Judge Series . .

The high frequency Judges (100 KHz) are ideal and are best suited for treasure hunters doing mainly coin hunting in areas with low to medium mineralization. Many times the Judges will outperform VLFs in low mineralized areas. The Judges are a non-ferrous detector and actually bypass many iron objects in the STANDARD mode which would be picked up by the VLFs in STANDARD. Although VLFs eliminate most iron objects in DISCRIMINATE, an occasional iron object would be picked up which would be eliminated by the Judges. For this reason, the Judges would not necessarily be the best choice for civil war artifact hunting. The Judges are slightly less complicated to set up than the VLFs.

## TR DETECTORS — The "B" Series

The COMPASS B Series is our most proven line of metal detectors. This series of detectors has probably found more coins than any other metal detector series ever. The B series is a very popular line of detectors for the beginner, and the experienced treasure hunter who knows and understands their advantages for the right detecting application. The B Series is one of the most popular units used in treasure hunts, as they ignore most of the rust junk which is not uncommon at various national treasure hunts.

The B Series are high frequency detectors (100kHz) and, although they are not discriminators, they will eliminate some small, extremely rusted iron objects. In the metal setting coins, rings, jewelry, brass, bronze and aluminum items, as well as large iron artifacts, will be detected. In the mineral setting (94B and 77B only) ore containing heavily magnetized material can be detected in which gold and other precious metals can be found.

The B Series uses a wide-scan loop which performs very well in mineralized ground, giving them an advantage over TR Discriminators in depth of detection and smoothness of operation. They do not detect as deep as the VLF detector in the VLF ground elimination mode; however, many coin shooters feel they detect deeper than the VLF/TR detectors in the TR mode when searching in medium to heavy mineralized ground. The B Series detector has a wide range of search loops available: 12", 8", 5" and 3" loops.

# How Deep Will They Detect?

## Detector Depth of Detection

Depth of detection of any metal detector depends on several factors. Sensitivity and quality of the detector itself, operating frequency, circuit technology, user's ability, size and position of the object, size of the search loop, metal oxidation, soil mineralization and how long the object has been buried.

Detector frequency is important in that as the frequency goes up the ground penetration or depth of detection is reduced. This is one of the reasons BFO detectors that operate above 250 KHZ have much poorer depth of detection than the TR or TR Discriminators which operate in the 100 KHZ region. The new VLF detectors generally operate from 3 KHZ to 10 KHZ. This frequency added to the ground cancelling characteristic give the VLF ground eliminator unequalled depth of detection. It is VERY IMPORTANT to note that just because a detector operates in the VLF (Very Low Frequency) range does not necessarily mean it will have the revolutionary depth of detection. It must also have the ground eliminating characteristic.

Performance of a detector should never be measured by Air Sensitivity. Frequencies for a design type can be increased slightly to give good air tests on coins, however, their in-the-ground performance may be lacking. In-the-ground testing is the most meaningful proof that a detector is "HOT"!

Mineralization of the soil varies from area to area. As the ground mineralization increases, the depth at which any detector will find a given object decreases. The one exception to this is the TR/VLF ground eliminators. As an example, on the Florida beaches a small freshly buried coin can be found from 5" to 8" with a TR detector in the Standard mode. On the other extreme, using the same detector in many of the northern states, because of their high mineralization, the same freshly buried coin may only be detected from 3" to 4". The TR/VLF ground eliminator will detect this same coin (in the ground eliminating mode) nearly as deep in the low mineralized areas as in the medium to high mineralized areas.

Search loop size is an important factor for depth of detection of a given object. The detector sharpness of signal or sensitivity to a small sized object is also a factor of loop size.

The larger the loop the deeper it will detect coin sized objects or larger. Also the larger the loop the more area covered in each sweep. This is very important when relic or artifact hunting.

Smaller loops give a sharper response to small objects. An example would be the 3" series loop for nugget hunting. A grain sized gold nugget

would be detected quite easily with a 3" loop. The 5" B series loop is also a popular nugget loop and also is used for searching overhead cliffs, caves or cabin walls and ceilings.

## What Will they Detect?

Metals and magnetic minerals (iron ore or black magnetic sand) are detectable with metal detectors. Metal objects are those that will conduct electricity.

Gold	Lead	Surface water
Silver	Coins	pipes
Copper	Rings	Corner stakes
Brass	Watches	Sewer heads
Artifacts	Jewelry	Many others

The better the electrical conductivity of an object, the better the TR detector will detect it.

In addition to iron ore and magnetic sand, mineral objects can also be iron objects which have oxidized (rusted) to a point that they will no longer conduct electricity such as certain very rusty nails, tin cans, etc.

Some detectors such as the Compass "B" series have a tuning control that can be set for either metal or mineral detection. VLF detectors detect metals and minerals simultaneously in the ground elimination mode. The TR discriminators only have a Metal setting on the Tuning Control. However, mineral objects can be detected and will cause the detector to respond by a decrease in the tone output instead of the increase in tone given by a metal object. This is also true on the standard TR (B series) when the Tuning Control is set on the Metal setting.



*The combination of healthy outdoor recreation with profit makes treasure hunting an alluring hobby.*

## A Family Hobby that Really Pays Off!

Today many thousands of Americans are spending their weekends and family vacations with metal detectors searching for treasure of all kinds — coins, relics, lost jewelry — even bottles and gold. These Americans are on the move into areas everywhere that harbor an abundance of lost, hidden, or buried treasure in city parks, countryside, and around abandoned houses, old battlefields, along dry river banks, along beaches, and — even in one's own backyard!

A little research at the local library will confirm that lost treasure is indeed "for real". Records indicate that there is more money lost or hidden than is in circulation today! Generally, one can get some idea as to where these caches have been lost or hidden. What it takes is some thorough research and a reliable metal detector to pinpoint the find!

The really "big" finds are not being made by the professionals alone. Thousands of Americans, young and old, are discovering that "coin shooting" can be very profitable — not only monetarily, but from the benefits of fresh air, and the exhilarating exercise of walking, bending, and the accompanying thrill of discovery!

Treasure hunting has become a truly major national family hobby! Witness the many treasure hunting clubs in almost every city in the country and the growing number of treasure hunting magazines and books!

Perhaps the main lure of treasure hunting today is its combination of healthy recreation with profit — a little time searching for coins, rings and other valuables around a previously used campground, for instance, has often yielded enough to more than pay for a metal detector!

Coins such as some Lincoln pennies can bring as much as \$35, Indian heads quite a bit more! Cast iron toys, bottles, old tools and guns can be worth hundreds of dollars!

The possibilities for finding hidden treasure are almost endless! Compass' more powerful and sensitive metal detectors are opening whole new vistas for relic hunters combing Civil War sites and other battlefields. New finds are being made on sites that were thought to have been thoroughly picked over!

Compass metal detectors are being used to find veins and other likely locations for gold prospecting — great for detecting the tiny nuggets not found while panning or sluicing! Metal detectors are almost a "must" for locating the old bottle dumps — and don't forget the time-honored pastime of beach combing. Make it really pay off when you take along a metal detector!

## COMPASS' 5 YEAR LIMITED WARRANTY

1 year on products retailing under \$100

COMPASS ELECTRONICS CORPORATION guarantees its detectors to be free from defects in materials and workmanship under normal use. If any defect does exist during the first calendar year after the date of original purchase, COMPASS will repair or replace, at its option, any defective product at no cost to the purchaser except transportation charges. During the second to fifth year after original purchase (excluding detectors retailing under \$100.00), COMPASS will replace any defective part excluding meters at no cost to the customer. All that will be charged during this second to fifth year is a nominal fixed labor, handling and return surface transportation charge of \$21.95. All such repairs will carry a 90-day parts and labor warranty for repairs that were made with all freight charges paid by customer.

This warranty does not include batteries and will not apply to any product which has been repaired or altered by other than COMPASS' own service department or authorized service center, so as in COMPASS' judgement, to adversely affect it, nor any product which has been subject to misuse, negligence or accident, or which has been operated contrary to sound practice or operating instructions. Refer to warranty card for return details.

# Coin Shooting Carpenter

Gene Coe is by trade a home building carpenter. As a carpenter Gene found he had extra time on his hands because of winter slow downs and bad economic periods. One day Gene noticed a fellow in a park near his home sweeping back and forth with a device that was unfamiliar to him. After a period watching this individual his curiosity got the best of him and across the field he headed to see what was going on. This Gene recollects to be an event which has given him a totally new hobby and now consumes most of his extra time.

Now after one and a half years of coin shooting Gene has become a bit of an expert himself and has shown and taught many other individuals how the hobby of coin shooting can be enjoyable, challenging and nominally profitable.

After purchasing his first Compass detector it took him about 15 minutes to find his first coin, a penny very near the surface. Gene reflects that during his first 2-3 months clad coins and pennies near the surface is about all he was able to find. Then as his experience increased, older and deeper coins including a few silver dollars and coins were found. It took him nearly a year before the very old and very deep coins were being located with any regularity.

During his first year of coin shooting, coins found totaled 8,000, of which 150 were silver. During the next six months this total increased to 15,000 and included an impressive 700 silver coins. Gene feels his higher coin count, and particularly silver coins, during the last six months is attributable mainly to a better understanding of his detector so that the softer deeper signals were not missed.

Gene now concentrates most of his coin shooting time to just the very light signals that he recognizes as giving him the best chance of digging a deeper older coin. Locating parks with larger trees indicating the park's age provides the clue to the park's capability of producing turn of the century and silver coins. He has not yet used research to locate unused older parks; however, some day he intends to. One of his favorite parks is one that has had a lot of pressure over the years from coin shooters who have done a good job of digging most of the surface coins and junk. Coins Gene now finds are deep and, the nice part is, about 50% are silver.

Gene tells the story about a small park that he had hunted very thoroughly about ten different times and decided it was hunted out. About a year later an opportunity arose when he was near this park and had a little extra time. Much to his surprise he found close to 100 coins of which 28 were silver. Gene now feels it is just about impossible to totally clean out a park as coins apparently move up and down as a result of heavy rains, freezes, and even moles and worms moving through the ground.

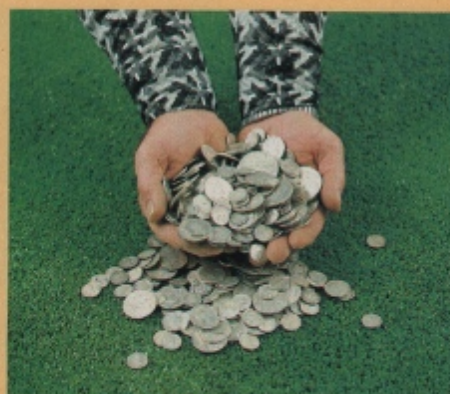
**Valuable rings and jewelry are easy prey for the metal detectors**



Gene's number one detector is the Relic Magnum 7 Automatic. His searching is now primarily with the 12" wide scan loop which provides more depth and wider ground coverage. Because of the 12" loop's higher weight, an Arm rest is now standard equipment on his detector.

A Discrimination level of 6-7 on his Discriminate Control eliminates tin foil, bottle caps and nails. Gene does not use the pull tab elimination setting because rings (now totaling over 100) and nickels are an important part of his finds. Although pull tabs are not being eliminated Gene's ability to hear a double blip on this trash item enables him to eliminate 50% without being in the pull tab elimination setting.

**Gene's silver coins found during his 3 years of detecting**



When searching a trashy park Gene uses his RM7 in the VLF ground elimination mode. Then on medium to loud hits, the end of handle Mode Selector Switch enables him to switch constantly to discriminate to verify his target.

To date Gene's exceptional finds include one gold coin, one diamond ring and one gold nugget. The gold nugget was found in a city park while coin shooting. After a little research Gene found the area was rumored to have a cache of buried gold nuggets. However, after considerable searching no more gold was found, although Gene strongly feels that the cache is there and some lucky treasure hunter will find it in the future.

**Indian Head Pennies are an exciting "find"**



# Relic Hunting with VLF Detectors

**HAROLD CARWELL  
TELLS HIS OWN STORY**

Locating the battlegrounds and campsites of the Civil War Soldier has been a hobby of mine for 22 years. Relic hunting is a very educational hobby. To be a successful hunter one should do a lot of research on the Civil War itself, before going searching for a campsite or battleground. The real joy of metal detecting for relics is when you are successful in finding a campsite before anyone else finds it.

A lot of books are available, such as diaries and documentaries, to assist you in locating Confederate or Union campsites or actual troop skirmishes and battle sites. These sites are very rewarding for such items as minie balls (lead bullets), brass buckles and buttons, complete pistols and muskets or parts, swords, bayonets, cannon balls, grape shot, artillery shells, or perhaps an unusual find such as a powder flask or minie ball die set for making the minie balls in the field.

During my 22 years of relic hunting I have dug and recovered between 10,000 to 12,000 individual relic items. My minie ball collection totals 200 different calibers, shapes and manufacturers, including foreign manufacturers. Some of the more interesting minie balls were those that were hand carved by the individual soldiers. Some of these hand-carved bullets were fired, and others were still live ammunition. In many cases the powder is still in a dry and fireable condition. Minie balls have been found that have actually collided in air during a major battle. For recreation the soldiers would hand carve minie balls and use them as poker chips. These hand-carved poker chips are a prized find. One of the more gruesome finds are minie balls that were placed between a soldier's teeth while amputating a leg or arm in a field situation when no deadening drugs were available. A soldier that had a terminal grape-shot belly wound suffered a very painful death. For a belly wound about all his fellow soldier could do for him was place a minie ball between his teeth to bite on because the pain was so severe he could bite his own tongue off. The photo below actually has tooth fragments imbedded in the minie ball that now looks like a well-chewed piece of gum.

Some of the relic finds are actually a challenge to determine what their purpose was. In many cases Confederate troops in particular had to hand forge tools to perform specific jobs. The Confederate troops were very undersupplied with hand tools and equipment.

Although I have found many interesting relics, the one that now comes to mind was a Virginia Military Institute (VMI) Brass Button. A VMI Brass Button is not that uncommon; however, this button which I found in one of Stone Wall Jackson's winter camps still had thread fragments in it for attaching to the uniform.

*Civil War artifacts found in, Virginia*



*During 22 years of relic hunting I have recovered 10,000 to 12,000 individual relic items*

The Civil War fireplace in the below photograph is where I dug four Confederate buttons the very first day I tried a Compass Judge 2 several year ago. I use Compass detectors to relic hunt and coin hunt because they are very dependable and are built to last for years. Here in Virginia we have a lot a heavy mineralized ground and a lot of detectors go dead on this ground. Compass has front panel Ground Elimination Controls on their detectors to overcome this problem. Tune it to the ground and hunt successfully, even in bad ground. My standard relic detector is Compass' new Relic Magnum 7 Automatic. There is none better.

I have hunted for Civil War relics in five states and I have met a lot of interesting people this way. I find that if you ask a landowner to hunt on their property, they usually will let you if assurance is given to them

*Mini ball with teeth fragments—located in photo above 3 normal mini balls*



that all holes will be filled and that their property will be respected. Very few have turned me down.

Knowing how to use your detector is a must in relic hunting. If you have located a target, never dig straight down where the object is buried. Move out from the target; then proceed to dig it out. After the object is removed from the ground move the detector back over the hole for there might be another relic in the hole or in the dirt that you have just dug out of the hole. Check real good before moving on, and don't forget to fill the hole back up. I have seen people dig right into a button or buckle and simply ruin it; they were too anxious. Just take time and be careful.

Good luck!

*Harold Carwell  
Churchville, VA.*

*One of Stone Wall Jackson's winter fireplaces*



# Coin Shooting Coin Collector

Arnold Grieves' metal detecting and coin shooting started in the early '70's. This introduction to a fantastic, healthy and rewarding hobby started when he stopped at a restaurant and stumbled into a treasure club in session. They had a display of members' "finds" for the previous month that were found with metal detectors. Being a coin collector himself and seeing all the silver coins in such fine condition started his heart pumping and he was hooked on the spot. Then and there Arnold purchased his first metal detector. Sleep was very difficult that night until morning arrived and off to the nearest park he went with the metal detector in one hand and an instruction manual in the other. It didn't take him long to master the basic detector operation. After just a couple of sweeps with the search loop, Arnold recalls his very first object was located and extracted from the ground — a rusty bottle cap. This didn't discourage him, however. Before his initial outing was over many trash items and a few coins were found. Arnold will never forget his initial excitement when he opened the soil slightly with his probing screwdriver and had a glimpse of his very first coin "find", which turned out to be a common date penny about 1" deep.

During the next few months Arnold's detector skills improved and silver coins for his collection were being found with regularity, and, to his surprise, a few rings. Arnold also recalls that he acquired two more detectors and a couple of hunting partners, his sons, Tom and Glenn.

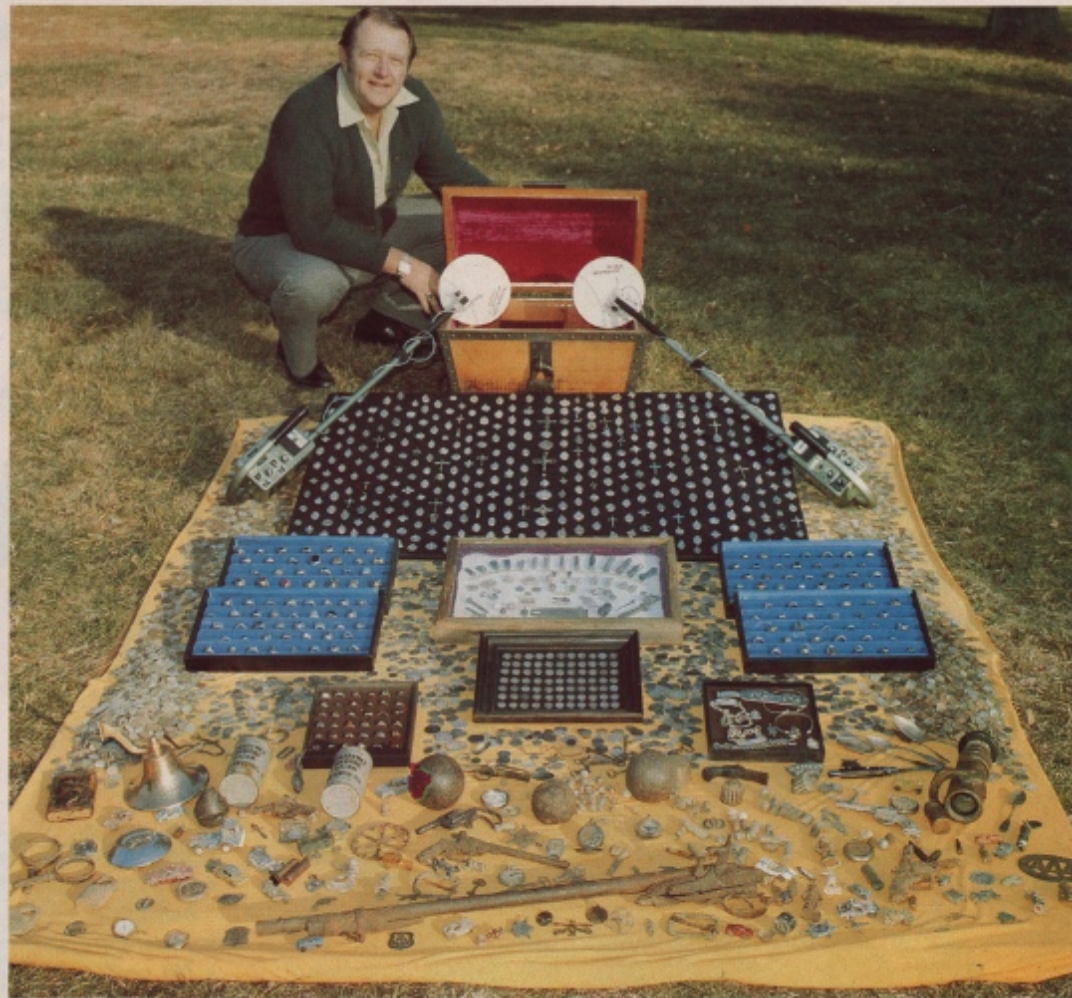
After his first six years of coin shooting Arnold had found over 40,000 coins and hundreds of rings. Although he has not kept records during the last four years, he is sure this total is over 100,000 coins. In this coin total a complete set of mercury dimes have been detected and unearthed, including the very valuable 1916D.

Arnold's ring finds are very impressive and include class rings, wedding bands and diamond rings. With the high price of gold, finding an older class ring can go a long way toward paying for a metal detector. Arnold also hires his services to locate lost rings for individuals.

Arnold is very proud of his sterling silver religious medals that he has detected (shown in the photo below) which now total over 400. He has also found many other religious medals made of non-valuable metals plus gold medals. Beaches, ball parks and other athletic areas are high producers of jewelry, gold chains, and religious medals, as well as coins.

Arnold believes that research on the area you intend to work, plus the best detector that one can afford, are the secrets of detecting today. Arnold constantly updates his detector as new technology advancements emerge from Compass' industry-leading engineering department.

**Arnold's complete set of Mercury Dimes found while detecting**



When Compass introduced the Relic Magnum 7 Automatic it very soon became Arnold's number one detector for parks, beaches and water working. Arnold is now going back to parks that he had searched years ago and with excitement he explains that it is like starting all over again, only now his "finds" total more barber and Indian head coins.

Recently Arnold has switched to using his RM7A with 12" loop for searching in parks where older coins are being found. The results are super! Not only is he covering more ground with each sweep but the increased depth over the 8" loop has increased his silver coin count greatly and he is into the liberty and seated type coins.

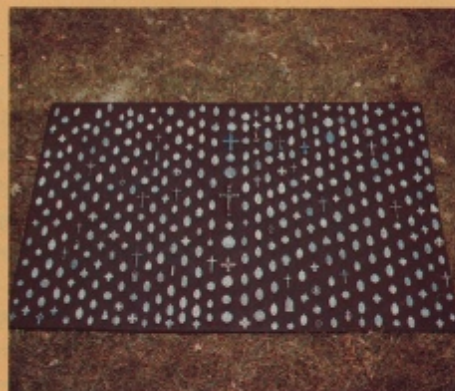
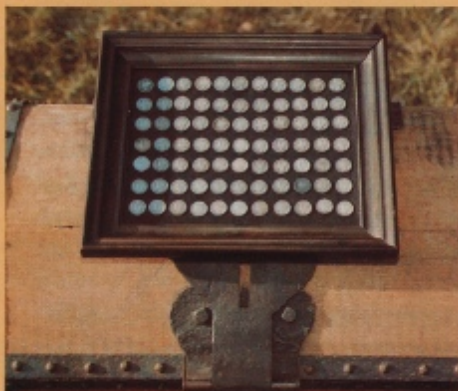
**Over 400 silver religious medals found during a ten year period**

Arnold advises that when researching a park, use our senior citizens. Their knowledge is first-hand and virtually untapped. A good example is an older park that undoubtedly had a baseball field when it first opened, but in a different section of the park than where it may currently be located. This valuable information can lead to older coins, jewelry, and perhaps a gold coin as well as fewer pull tabs.

Arnold displays some of his "finds" at his place of business and would be more than happy to show them to anyone who may be interested in learning more about metal detecting and which detector may best suit their needs.

Mountain View Electric  
866 Rt. 23  
Wayne, NJ 07470  
(201) 694-4565

**These are but a few of the hundreds of gold and silver rings Arnold has found.**



# Detects Valuables as Deep in Discrimination as most other VLF's in Non-Discrimination!

## COIN MAGNUM GROUND ELIMINATING VLF DISCRIMINATOR

Eliminates Ground in Discriminate as well as Non-Discriminate and with no loss in depth of detection from Non-Discriminate through pull tab elimination.

Detects non-surface nickels (deeper than 2½") and most rings in Pull Tab Rejection.

Revolutionary new Tri-Planar patent pending loop design

Eliminate pull tabs down to 50%, bottle caps, nails and most other trash down to 70% of coin depth simultaneously without loss of treasure depth in VLF Ground Elimination Discrimination.



The Memory Circuit that Instantly Retunes Itself!

Patent pending circuit design.

## AN ENTIRELY NEW CONCEPT IN METAL DETECTORS!

- Eliminates ground in Discrimination.
- Gives full treasure depth in Standard and Discriminate modes.
- Meter Discriminates while Audio is not Discriminating.
- No need to awkwardly jerk loop from target while Discriminating.
- Discriminates against bottle caps and other trash while in Pull Tab Rejection.
- No need for tiresome fast sweeping while Discriminating (Discriminates at normal sweeping speeds).

The Coin Magnum detects small gold coins and nuggets better than any other detector while in pull tab rejection. Many discriminators will not detect them at all!



*These nine silver dollars were found in a container buried in a children's play area.*

### UNIQUE FEATURES

**TRASH SQUELCH** — Permits operation in extremely high trash areas without any audio decrease over trash. Operation is at reduced sensitivity.

**TONE CONTROL** — Sets the audio frequency best suited to your hearing range. Each individual requires a slightly different tone to maximize detection.

**SPEAKER TILT DISCONNECT SWITCH** — Saves on batteries and eliminates bothersome noise while probing for your find.



**Professional VLF/TR Discriminator Quality  
with end of the handle Mode Selection**

# RELIC MAGNUM ULTRA DEEP SEEKING VLF DISCRIMINATOR 7

**EASY TO OPERATE!  
LIGHTWEIGHT AND  
PERFECTLY BALANCED!**

**automatic**

**with INSTANT TOUCH TUNING!**

**THE  
CHOICE OF  
THE PROS!**



Here is superior performance in either Ground Elimination (VLF) or Discriminate mode of operation at a price much lower than you'd expect! Features of this easy to operate and lightweight Relic Magnum 7 include: **END OF HANDLE TOUCH (memory) TUNING** and **MODE OF OPERATION CONTROL**. Instantly retunes the detector and changes from VLF to TR Discriminator or vice versa — gives you more time for hunting! When conditions cause a need for retuning, depress the Touch Tuning Control and the Relic Magnum 7 comes back into its original setting **AUTOMATICALLY!** **GROUND TUNER**: When in the VLF mode, this control tunes out mineralized ground. Lets you go deeper than you thought possible... up to twice as deep as non-VLF detectors in mineralized soil! **DISCRIMINATE CONTROL** is scaled to let you progressively tune out foil, bottle caps, nails and pull tabs when in the discriminate mode! **PLUS** all the other features that have made Compass famous! Fully waterproof, lightweight, adjustable 8" Loop with cord restraint; Insulated Rod Stem; No-Slip (patent-pending) Rod Adjustment; easy-to-read Indicating Meter and Automatic Battery Condition Check each time the detector is turned ON; Clear tone Speaker, Handy On-Off control; Headset Input and easy-on easy-off "Sure lock" Battery Door.

The RM7 Auto now features a fully Automatic re-tuning mode. Also featured is the Variable Sensitivity Control, which allows the user to adjust for the soil conditions for maximum depth of detection.

It is important to note that the ground elimination (deep seeking) feature is only present while the RM7 is in the Standard mode. Depth of detection in the Discriminate mode is similar to Compass' standard TR Discriminator models.

*Additional new features on the RM7 Auto include a Tone Level Control and S.D.C.S. The T.L.C. sets the audio frequency to the individual's hearing range. Each individual requires a slightly different tone to maximize detection depth. The Speaker Disconnect Switch shuts the Speaker off each time the detector is laid flat while probing for a find which eliminates the bothersome noise while digging. Saves on batteries, too!*

*This turn-of-the-century threshing machine provides locale for relics.*



# End Of The Handle Mode Selection

## MAGNUM 420

### ULTRA DEEP DETECTING VLF/TR DISCRIMINATOR

ELECTRONIC MODE SELECTION  
AND INSTANT TOUCH TUNING



*Sensitivity Range Control allows the detector to be set for maximum depth of detection possible for the soil mineralization being searched.*

#### PROFESSIONAL FEATURES

- Very Low Frequency circuit design
- Target Indicating Meter - helps verify those weak targets
- Ground Tune Control - tunes out the effects of mineralized soil for maximum depth of detection
- Tuning Control - sets detector to proper sensitivity threshold
- Scaled Variable Discriminate Control - set it to progressively eliminate tin foil, bottle caps, nails and pull tabs
- Automatic Battery Check - checks condition of batteries each time detector is turned on
- Headset Input - a must in noisy areas to get maximum depth
- Coated P.C. Boards for greater protection against humidity and temperature
- Advanced 60 cycle rejection circuit makes operation possible when other VLF's are erratic
- Operates from 6 each AA batteries with low current drain
- 8" wide scan waterproof search loop
- Light Weight 4 lbs.

#### EXPERTS AGREE!

Tom Dickey, noted Civil War historian, author and collector, has made fantastic finds in areas considered to be totally "worked out" because of high soil mineralization or previous digs. VLF detectors have revitalized the hobby of Relic Hunting (particularly Civil War relics), and exciting finds are being made every day by users of VLF detectors. The ease of handling and light weight of the Compass Detectors is an added advantage.



When coin hunting in areas that are abundant with nails or rusty iron scraps the detector will detect trash objects to great depths in the VLF mode. For areas of high trash content, Compass engineers have added a scaled Discrimination mode to the VLF models which can be progressively set to eliminate tin foil, nails, bottle caps, rusty iron and pull tabs. The VLF user should keep in mind that the ground elimination and deep seeking features which will detect objects up to twice as deep as non-VLF detectors in mineralized soil are present only while in the Standard (Non-Discriminate) Mode. Depth of detection in the Discriminate Mode is similar to Compass' standard TR Discriminating Detectors.

# World's Top VLF/TR Discriminator Value

## MAGNUM 320 DEEP SEEKING VLF/TR DISCRIMINATOR

FEATURING END OF THE  
HANDLE INSTANT MODE  
SELECTION AND TOUCH  
TUNING



The Magnums 240 and 320 were designed with the features and performance for the serious treasure hunter. Single handed, end of handle mode selection of either all metal (Non-Discriminate) or Discriminate provides the ultimate in professional simplicity. When in the VLF (Non-Discriminate) mode the effects of mineralized ground are easily tuned out with the Ground Tune Control, allowing maximum depth of detection.



### ADDITIONAL FEATURES

- Very Low Frequency Circuit
- Target Indicating Meter
- Battery Check — automatic each time detector is turned On
- Ground Tune Control
- Tuning Control
- Operates from 219 electronic components
- Scaled Variable Discriminate Control
- Headset Input
- Advanced 60 Cycle Rejection Circuit
- Operates from 6 each AA batteries
- 8" Waterproof Search Loop
- Light Weight



## MAGNUM 240

DEEP SEEKING VLF/TR  
GROUND ELIMINATING  
DISCRIMINATOR



Compass' Magnum 240 has all the fine features of the Magnum 320 with the exception of the Volume Control. The 240 operates from 113 electronic components power by 6ea 1 1/2 AA batteries. Our sensational Magnum 240 is unbeatable in the under \$200.00 VLF/TR price range.

# Finest Discrimination...Automatically!



## the Judge 2 AUTOMATIC discriminator

This discriminating detector does more, detects deeper, and is **AUTOMATICALLY** easier to handle than ever thought possible in a metal detector!

The Judge Autos are known as the 4 in 1 TR Detectors! And with good reason: You get

- FULLY AUTOMATIC OPERATION** in either "Standard" or "Discriminate" mode with no loss of sensitivity or depth perception
- PUSH-BUTTON TUNING**
- STANDARD FULL RANGE DETECTION** that detects all metal objects - important when searching for artifacts as well as coins and precious metals
- SCALED DISCRIMINATION** that progressively eliminates tin foil, most nails, small rusty objects, bottle caps, and pull tabs. It is important to note that while in pull tab reject most rings and the U.S. nickel coin will also be eliminated. This is a characteristic of all discriminators on the market.

**THERE IS NO FINER TR DISCRIMINATOR THAN THE J2-A FOR DEPTH OF DETECTION**



**IN EITHER STANDARD OR DISCRIMINATE MODES OF OPERATION!**

**PUSH-BUTTON TUNING with SPECIAL MEMORY CIRCUIT**

Maintains maximum sensitivity in the Automatic mode over all kinds of terrain. When hunting in the Manual mode, Push Button Tuning instantly retunes to preset level!

Other features include:

- TR (Transmitter Receiver) circuit
- Target Indicating Meter
- Ground Condition Control
- Metered Battery Check
- Headset input
- Speaker Disconnect Switch
- Extra Loud tone Speaker
- Light weight: 4¼ pounds
- Operates from 3 packs of 4 Penlite AA Batteries
- Long battery life - up to 40 hours



### FEATURES

- Touch Tuning
- Indicating Meter
- Scaled Discrimination
- ON/OFF Volume Control
- Metered Battery Check
- 8" Waterproof Search Loop
- Standard and Discriminate Modes
- Operates from 8 ea. 1½v AA Batteries  
With 40 to 50 hours of operating life
- Headset Input
- Light Weight 3½ lbs.

## Judge 6



This abandoned prospector's cabin is a good spot for searching.

# Our "B" Series... Tried & True

## COMPASS 77B

*This has been one of Compass' most popular detectors! There have probably been more coins found with the 77B than any other detector ever made!*

### quality features include:

- Volume Control coupled with On/Off Switch.
- Meter-Zero for precise tuning - confirms location of a "find".
- Speaker Disconnect Switch.
- Metered Battery Check.
- Built-in Speaker with extra loud tone.
- Light weight: 4 pounds.
- Long battery life, 40 to 50 hours.
- Headset input.

Recommended optional accessory



**Prize winning features that have helped make Compass famous are incorporated into the 77B:**

- TR (Transmitter Receiver) circuit.
- Wide scan loops - scans a much wider area than some TRs. This was a Compass innovation that is becoming a standard for the industry.
- Target Indicating Meter.
- Fine Tune Control for greater sensitivity.
- Ground Condition Control.

## COMPASS 94B

*This TR is perfect for the serious beginner that wants a detector simple enough to operate so that no finds are missed!*

*Features include a push-button battery check light. Two controls consist of metal-mineral tuner and combination On/Off and Volume Control adjustment. Includes headset input, telescoping shaft and 8" "wide scan" water-proof adjustable loop. Weighs less than three pounds.*

Interchangeable 12" loop is also available as optional extra.

## coin hustlers

*Don't let the low price of these hot little TR detectors fool you! The same high quality Compass craftsmanship is built right into these Coin Hustlers. The Coin Hustler II has 6" "wide scan" water proof adjustable angle loop, telescoping shaft, and push-button Battery Check Light. Circuitry is housed in sturdy aluminum casing.*

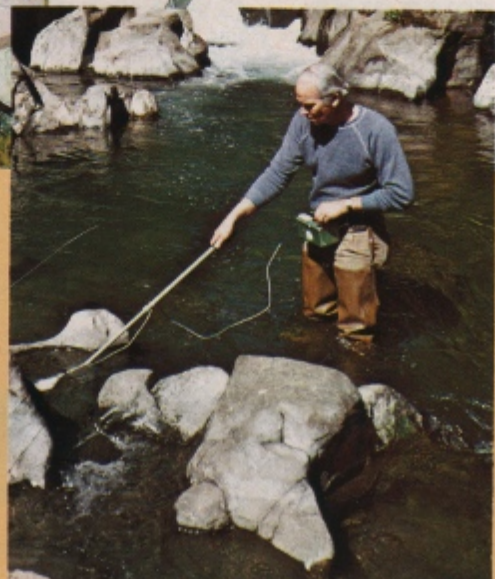
### COIN HUSTLER II

*Coin Hustler I has same features as Coin Hustler II with exception of battery check. The Coin Hustler II operates from six 1 1/2V batteries for extra power and longer life. The Coin Hustler I operates from one 9V transistor radio battery. Weighs less than 2 1/2 lbs.*

### COIN HUSTLER I



*Compass' famous "B" series and the Coin Hustlers have popularized treasure hunting with tens of thousands of satisfied and dedicated users. Kids take to the hobby like fish to water! No other hobby-sport seems to combine the thrill and excitement of discovery in the same way that metal detecting does!*



# Detectors for Special Purposes



## Pipe Seeker 5

Choice  
Of The

Professionals

**LOCATES:** pipes, cables, conduit, gas lines, sewer heads, septic tanks, manhole covers, meter boxes, vaults, and all large buried metal objects. This amazing detector is used by telephone and power companies, sewage and water departments, contractors, cable TV companies, etc. There is no detector that will detect a Treasure cache deeper than the Pipe Seeker 5 - up to 40' on a large chest.

**TRACES:** pipes, cables, conduit, gas lines, non-metallic pipe or ducts (using auxiliary tracer transmitting unit), and electrical conduit (without interfering with current when using Inductive Coupler.) The Pipe Seeker 5 is the most versatile line locator on the market today. With the use of the inductive coupler and the "Snooper" (Pat. No. 3,597,680), the Pipe Seeker's locating abilities are almost endless. The Snooper is the only detector on the market for locating non-metallic pipe.



Inductive Coupler



Sewer Snooper

**THE MOST  
EFFICIENT,  
VERSATILE  
LOCATOR/  
TRACER  
AVAILABLE  
TODAY!**

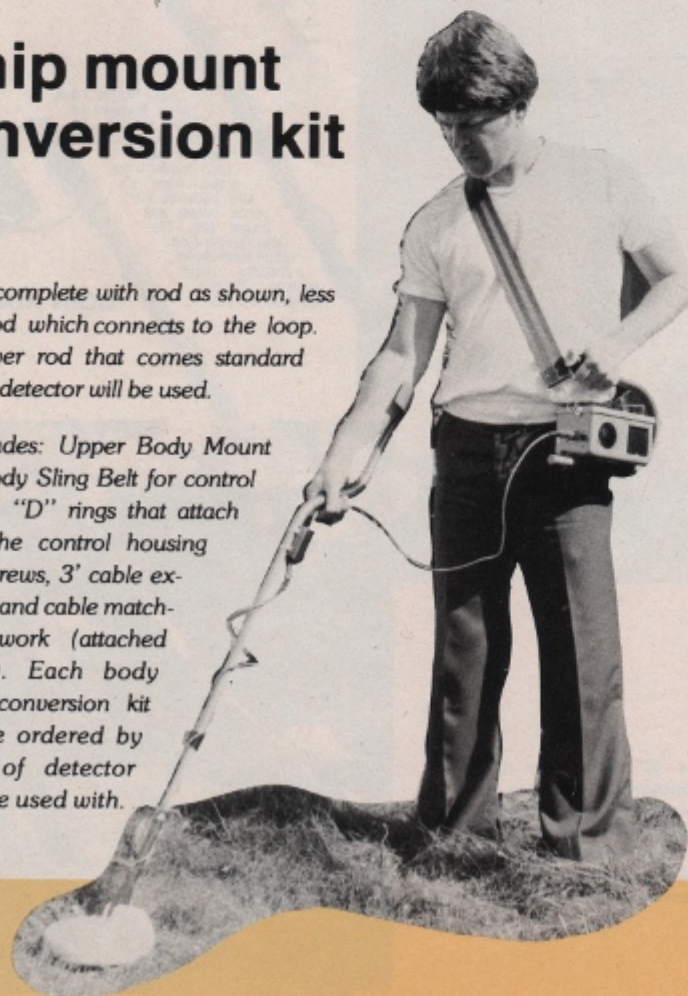


## Recommended Accessories

### hip mount conversion kit

Comes complete with rod as shown, less lower rod which connects to the loop. The lower rod that comes standard with the detector will be used.

Kit includes: Upper Body Mount Rod, Body Sling Belt for control housing, "D" rings that attach under the control housing panel screws, 3' cable extension, and cable matching network (attached to rod). Each body mount conversion kit must be ordered by model of detector it is to be used with.



### arm rest

The COMPASS Arm Rest is designed to provide support for extended periods of detecting. Greatly reduces arm fatigue. It is an extremely effective device when searching with a 12" loop. The clamp adjustment allows setting to any position on the curved handle and up or down on the Arm Rest Shaft.

The arm rest saddle for both the Arm Rest and Body Mount Conversion Rod can be squeezed tighter or expanded to fit each individual's forearm. This is a very important point that is missing on many competitive designs. The Arm Rest will fit all competitive detectors with a curved handle similar to the COMPASS design.



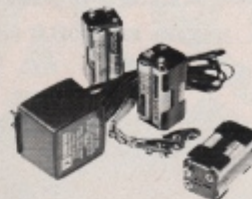
# Field Tested Accessories

## stereo headphones

These deluxe stereo type headphones have separate volume controls for EACH earpiece. Be more perceptive and catch those faint "blips" that indicate a deeply buried "find". "Out of the way" coiled cord comes with 90 degree jack that rests flush against detector housing. Softly padded for extra comfort!



## battery charger



These powerful Battery Chargers, designed for most COMPASS Detectors, will fast-charge nickel cadmium batteries in 3 to 4 hours. The detector models that they will operate with and the number of batteries that are required are listed below:

Model	# of AA batteries	Model	# of AA batteries
Coin Magnums	12	Magnum 220	6
Relic Magnums	12	Magnum 320	6
77B	12	Magnum 420	6
Judge 2 Auto	12		

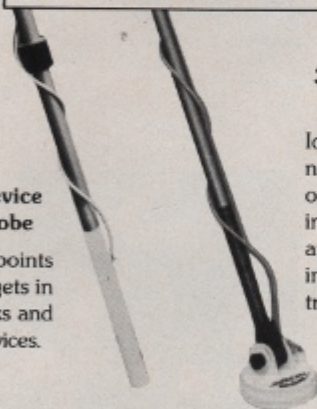
The Charger must be ordered by the battery complement it is to charge. The 12AA battery system consists of 3 battery holders containing 4 each AA batteries. All 3 packs must be charged simultaneously. The 6AA battery system consists of 1 each 6 pack battery holder which constitutes a 9V system.

Nickel-cadmium batteries hold a level, steady charge longer than an ordinary battery's entire life! Can be recharged up to 1000 times. A real dollar saver for the serious treasure hunter.

- Rechargeable batteries
- Battery charger #1, 12 batteries
- Battery charger #2, 6 batteries

## New and Important Search Loops Provide Maximum Detecting Flexibility

**Crevice Probe**  
Pin points nuggets in cracks and crevices.



**3" Gold/Coin Probe**  
Ideal for gold nugget hunting or coin shooting in high trash areas. Works in between trash items.



**16" Deep Scan**  
Provides unequalled depth on coin sized objects and larger. Available for RM7 only.

## detector bag

Black vinyl detector bag, perfect for field use. For all detectors with 8" loop or smaller. Keeps moisture, dirt away and protects against knocks and scratches.



## extra long loop cords

Compass loops can be ordered with or changed to these longer cord lengths.  
Additional Cost  
10' -  
15' -  
20' -



## zero-buoyancy loops



Filled with epoxy to eliminate the "cork" effect in water. 10' of cord.

"B", Judge and RM7 only.



## cloth patch

Two-color embroidered patches go on jackets, shirts or caps.

## snap-on loop covers job-rated loops

3", 6," or 8"  
12"

Snap-on coil protectors give your loop a second skin... guards against wear from abrasive sand, gravel and sharp rocks. Molded from high impact ABS plastic... Designed to slide smoothly over rough and rocky ground. Easy to snap on and just as easy to remove.



- 3" Loop**  
Ideal for pinpointing small gold nuggets and ore veins.
- 5" Loop**  
Ideal for ore vein searching, nugget hunting, or searching overhead structures (cabin walls, cliffs, etc.). Fits all "B" series only.
- 8" Loop**  
Most popular for all-around treasure hunting, coin shooting, larger nuggets. Available for all models except Coin Hustler Series.
- 12" Loop**  
Compass' famous "deep searcher" for deep detection and fast ground coverage. Popular with relic hunters and coin shooters alike.
- 16" Deep Scan Loop**  
This loop is currently only available for the Relic Magnum 7A. Provides maximum depth of detection possible for coin and relic hunters.



*In general, the smaller loop is more sensitive to smaller objects while the larger loops will detect at greater depths with less sensitivity to the smaller objects.*



# COMPASS ELECTRONICS CORP.

P.O. BOX 366 3700 24th AVE. FOREST GROVE, OREGON 97116,



Just a few of the Civil War artifacts Pat Smith has found treasure hunting with his Compass. Pat says site research is very important. His favorite areas are Civil War skirmishes. These areas are usually good for such items as buttons, belt buckles, bayonets, swords and other military artifacts.



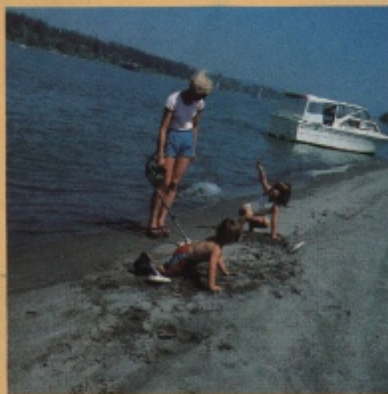
A fantastic nugget display valued at \$200,000. All were found by a proud prospector with his metal detector only! Nugget weight is from 1/4 oz. to 19 oz.



Nugget Hunting — 720 oz. nugget found with a VLF/TR Automatic Detector. This nugget found in Australia currently valued at over \$1,000,000 is the largest in existence. Nugget Hunting is becoming more popular and productive as a result of the VLF circuit technology.



Bob Griffin showing more than 25,000 coins found with his Compass Detector. In addition to his coins, Bob has found hundreds of rings — the most valuable of which is worth over \$2,000.



Beach Detecting is proving to be very popular for those family outings. Beaches are ideal for Coins, Diamond Rings, Gold Chains and assorted Jewelry. With the increased depth of the VLF Detectors the deeper items are now available to the Beach Hunter. An ideal time is when a storm combined with a low tide is cutting away, (higher on the beach) old sand.



Coin Shooting expert Kay Modgling displaying a small portion of her 150,000 coins found in a 7 year period. Her 150,000th coin was a 1925 Buffalo Nickel found at General Patton's World War II training camp in the California desert. Kay's favorite detector is the VLF/TR Relic Magnum 7 Automatic.

**Sold in this Area by:**





MONT'S RELIC JUNKTION  
MONT BERRY  
544-9657

**RETAIL PRICE LIST**  
Effective 9/1/82

DETECTORS

TR (Non-Discriminating) Detectors

77B w/8" & 12" loops	\$349.95
77B w/8" loop	299.95
94B	179.95
Coin Hustler II	99.95
Coin Hustler I	79.95

TR Discriminator Detectors

Judge II Auto w/8" & 12" loops	\$379.95
Judge II Auto w/8" loop	329.95
Judge 6	229.95

VLF/VLF Ground Eliminating Detectors

Coin Magnum w/8" & 12" loops	\$494.95
Coin Magnum w/8" & 12" loops rechargeable battery system	543.95
Coin Magnum w/8" loop	439.95
Coin Magnum w/8" loop & re- chargeable battery system	488.95
Challenger X70 w/8" loop	499.95

TR/VLF Ground Eliminating Detectors

Relic Magnum 7 Auto w/8" & 12"	\$414.95
Relic Magnum 7 Auto w/8" & 12" rechargeable battery system	463.95
Relic Magnum 7 Auto w/8" loop	359.95
Relic Magnum 7 Auto w/8" loop rechargeable battery system	408.95
Magnum 420 w/8" & 12" loops	334.95
Magnum 420 w/8" & 12" loops rechargeable battery system	364.50
Magnum 420 w/8" loop	279.95
Magnum 420 w/8" loop & re- chargeable battery system	309.50
Magnum 320 w/8" & 12" loops	304.95
Magnum 320 w/8" & 12" loops rechargeable battery system	334.50
Magnum 320 w/8" loop	249.95
Magnum 320 w/8" loop & re- chargeable battery system	279.50
Magnum 240 w/8" loop	189.95
Magnum 240 w/8" loop & re- chargeable battery system	219.50

Industrial & Specialized Detectors

Pipe Seeker V	\$599.95
Inductive Coupler	199.95
Sewer Snooper	229.95
Leak Locator	1195.00

ACCESSORIES

Headphone (stereo w/90° plug)	\$ 21.95
Detector bag, vinyl	18.95
Snap on Stand	1.95
Coin Hustler loop cover	4.95
3" cover (specify B,CM,RM7, Mag)	3.95
8" cover (specify B,J,CM,RM7, Mag)	4.95
12" cover (specify B,J,CM,RM7 Mag)	5.95
Arm rest	17.95
Hip mount conversion kit (specify B,J,CM,RM7,Mag)	39.95
30" lower VLF Rod	10.95
Compass ball cap (adjustable size)	4.95
Battery charger #1 w/12 nicads (charges all 12 simultaneously)	49.15
Battery charger #2 w/6 nicads (charges all 6 simultaneously)	29.55
Extra rechargeable (nicad) batteries	3.10
12" loop (specify model)	89.95
8" loop (specify model)	74.50
3" B loop	74.50
3" Gold Probe (CM series) -- includes lower rod	89.95
3" Gold Probe (RM7A)	69.95
3" Gold Probe (Mag 240,320,420)	69.95
16" Deep Scan loop (RM7A only)	129.95
Epoxy filled loops w/10' cord (this cost is in addition to the loop cost listed above)	39.95

NOTE: The 77B, Judge 2, RM7 and Coin  
Magnum will operate with re-  
chargeable battery system #1.

Price and specifications subject to change without notice.